

From ERA TC Web page presentation

The [European Union Agency for Railways Railway Terminology Collection](#) (ERA RTC) gathers terms and abbreviations that are contained in the EU legal framework for railway, technical documents produced by bodies which are engaged in the development of important evolution in the railway system and other relevant glossaries.

ERA RTC is intended to become a terminology single-entry point for the railway sector implementing the Single European Railway Area (SERA). Its main aim is to sustain the development of a common understanding in the rail sector, essential to achieve the level of harmonisation required by the EU legal framework.

ERA RTC includes duplication of terms, reflecting for single term the use of different definitions in different railway contexts. It is also possible that terms appear duplicated in the same context, due to the purpose of the document they are contained in. There is also a further reason to show duplicated definitions due to their sources, that is to standardise and rationalise the terminology, wherever possible, in new or revised documents, both for activities carried out internally and externally to the Agency.

ERA RTC is a dynamic set. The aim is to improve and collect as many relevant terms as possible.

ERA is committed to reviewing the collection periodically or in the event of significant changes in the EU legal framework and in the reference guides.

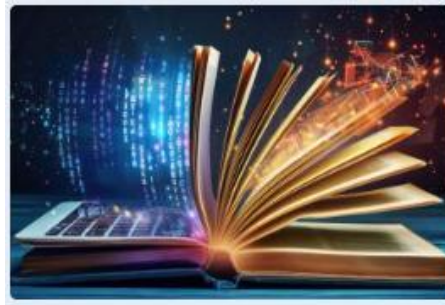
If you wish to address request for any addition, or correction to one or more terms /abbreviations of the collection, please write to:

ERATerminology@era.europa.eu

EUROPEAN UNION AGENCY FOR RAILWAYS

RAILWAY TERMINOLOGY COLLECTION (ERA RTC)

README



What is ERA Railway Terminology Collection?

It is a collection of all the terms and abbreviations that are contained in:

- the EU legal framework for railway, including the Directives, the Regulations and the guidelines developed by the Agency to support the application of the aforementioned legal framework;
- technical documents produced by bodies which are engaged in the development of important evolution in the railway system technology and equipment (e.g. ERTMS);
- technical documents produced by other entities, like representative organisations (see [Annex](#) to Commission Decision C(2021) 7945 final) or other railway industry associations (e.g.: Rail Net Europe) or international standards (e.g. ISO terminology)
- Other glossaries which have been considered relevant according to general EU legal framework also being applicable to railways (e.g.: Eurostat)

The terms and abbreviations are normally those derived by the relevant dedicated parts, articles or annexes, named as “glossary” or “terms and definitions” or other indicative name. However, there are some terms which have been reputed important for the understanding of concepts and inserted in the ERA RTC after validation of concerned experts.

When terms are duplicated, they are classified according to different [contexts](#), which are an attempt to group the source documents around a homogeneous topic.

[Why an ERA Railway Terminology Collection?](#)

The ERA RTC is intended primarily to be a support to the railway sector users, who can find definitions originating from a variety of sources through a single-entry point.

There are repeated terms in the collection, even several times, coming from different sources, due to the purpose of the document they are contained in.

There is also a further reason to show duplicated definitions due to their sources, that is to standardise and rationalise the terminology, wherever possible, in new or revised documents, both for activities carried out internally and externally to the Agency.

Indeed, for the future, the consultation of the glossary before starting to draft a new document or before a review of existing one(s) may be useful to screen definition(s) already existing, so there is no need to invent a new one unless it is strictly necessary.

The transition towards, if possible, a unique definition of a term, will be important for the sake of a valid, unique term to be used in linked data and ontologies. it would be recommended to reduce duplications.

[Who is ERA Railway Terminology Collection for?](#)

The ERA Railway Terminology Collection is available for the public at large: all the actors involved in the Single European Railway Area (SERA): institutions, railway experts of operators, manufacturers, etc., professionals and students can find an answer to their needs of drafting, reviewing, or understanding a text.

[Which is the future of the ERA Railway Terminology Collection](#)

The full coverage of terms is not completed yet. Several technical documents containing terms have still to be poured into the collection. So, the ERA RTC must be seen as a dynamic document which will be updated with new terms, also deriving from the revision of documents.

ERA is committed to improve the collection with corrections which may be necessary and to add other terms. There are currently about 7100 records in the ERA RTC.

If someone would spot improvement to be brought to term /abbreviation of the collection is kindly requested to inform the ERA Terminology Team about it.

Similarly, if someone would propose one or more terms/abbreviations to add.

The functional email for the exchange of above communications is ERATerminology@era.europa.eu.

Finally, ERA is committed to review the collection periodically or in the event of significant changes in the EU legal framework and in the reference guides (for example, the TSIs revision 2023 is incorporated in this electronic release of the collection, which replaces the former PDF file).

[Structure of ERA Railway Terminology Collection:](#)



This part describes the items which are present in the ERA RTC, which is available at the URL [ERA Railway Terminology Collection | European Union Agency for Railways \(europa.eu\)](#).

1. Search functionalities

Each term/acronym can be searched through the available functionalities, shown in the picture:

The screenshot displays the search interface of the ERA Railway Terminology Collection. At the top, there is a search bar with a magnifying glass icon and a 'Reset all filters' button. Below the search bar, there are two rows of filter buttons: the first row contains letters A through V, and the second row contains W through Z, followed by symbols Ø, M, and numbers 1 through 5. At the bottom, there are five filter sections: 'Filter by context' with a 'Select Value' button and a plus sign; 'Filter by document type' with a 'Select Value' button and a plus sign; 'Filter by latest release' with a dropdown menu showing '- Any -'; 'Sort by' with a dropdown menu showing 'A-Z'; and 'Items per page' with a dropdown menu showing '20'.

How to search a term/acronym?

<p>The term/acronym can be searched by name in the box</p>	<div data-bbox="972 336 1794 432"><input type="text"/></div> <div data-bbox="1671 336 1794 432"></div> <p>e.g.</p> <div data-bbox="972 474 1794 569"><input type="text" value="Acceptable means of compliance"/></div> <div data-bbox="1671 474 1794 569"></div>
<p>The term/acronym can be filtered by the following context:</p>	<ul style="list-style-type: none">• Common Safety Methods• Control-command and signalling• Data protection• Energy• Entity in charge of maintenance• ERTMS• EU Policy• Freight• Human and Organisational Factors• Infrastructure• International relations• International standard• Interoperability• Noise• Operation• Persons with reduced mobility• Railway tunnels• Registers• RNE Glossary• Security• SERA / EU transport

	<ul style="list-style-type: none"> • Single Safety Certificate (SSC) /Safety authorisation (Safety SSC-SA) • Single market/ Mutual recognition/ Conformity assessment • Telematics applications for freight • Telematics applications for passengers • Vehicles (VA) • Withdrawn
The term/acronym can be filtered by document type:	<ul style="list-style-type: none"> • Agreement • Application guide • Certification scheme • CIT document • Convention • COTIF document • Council Recommendation • Decision • Directive • ERA technical document • EU technical document • Glossary • Guide • International agreement • ISO • Manual • Recommendation • Regulation • Sectorial scheme • Technical document • TSI • Website
The term/acronym can be filtered by date of release:	-any- Latest releases only
The term/acronym can be sorted by alphabetical order	A-Z, Z-A

	date of release:
--	------------------

By clicking on the identified name of the term/acronym, a page referred to the selected term/acronym appears, as in the example before.

Term	Context	Document Type	Origin document
Acceptable means of compliance	Interoperability	Directive	Directive (EU) 2016/797 of the European Parliament and of the Council of 11 May 2016 on the interoperability of the rail system within the European Union (recast)

2. Items visualised for each term/acronym

For each term/acronym the following specifications are provided:

Definition (in English)	Text of the definition. Please note that we have slightly adapted the text contained in the origin document by removing the ‘means’ between the Term and the definition. This is an editorial choice to harmonise the definition’s appearance.
Context	See above for the list of contexts
Document type	See above for the list of document types
Origin document	The title of the document containing the definition is displayed here. When available, the consolidated version of EU legal texts has been taken as “origin document” to facilitate its search in the current comprehensive text.
Reference Link	The link text allows users to click the page that contains the information.
Release	All the terms and abbreviations of the first bulk upload have the date of 04/01/2024 (month/day/year). Terms added at a later time, will have the relevant date of release.

As follows, an example of the above searched term as it is visualised in the ERA RTC:

Acceptable means of compliance

Definition	Non-binding opinions issued by the Agency to define ways of establishing compliance with the essential requirements.
Context	Interoperability
Document Type	Directive
Origin document	Directive (EU) 2016/797 of the European Parliament and of the Council of 11 May 2016 on the interoperability of the rail system within the European Union (recast)
Reference Link	https://eur-lex.europa.eu/legal-content/EN/TXT/?uri=CELEX%3A02016L0797-20200528 ¹
Release	01 April 2024

DISCLAIMER:

European Union Agency for Railways' Railway Terminology Collection is a collection of existing terms aiming at supporting the sharing of information and harmonisation of terms in the Single European Railway Area (SERA). It was created to facilitate the work of the Union institutions, representative bodies and national authorities. The terms and definitions contained within is meant purely as a documentation tool and have no legal effect. Where available, the Agency strives to provide a link to official texts with legal effect.

The European Union Agency for Railways does not assume any liability for RTC's contents. Only documents published in official sources (such as in the EU Official Journal or in sources of standardisation bodies) must be referenced to ensure conformity to the rules therein. The European Union Agency for Railways is not obliged to keep the RTC updated and cannot guarantee that the terms in the RTC are up to date.

The terms and definitions in the RTC are drawn from different sources and may be subject to copyright and intellectual property rights of their respective authors and other third parties. Most documents owned by the European Union are freely available, many of them under Creative Commons licenses, and can be downloaded and reproduced provided the source is acknowledged, however, please check their respective copyright notices. Please, also see [Commission Decision of 12 December 2011 on the reuse of Commission documents](#). EUR-Lex metadata is dedicated to the public domain in accordance with the [Creative Commons CC0 1.0 Universal Public Domain Dedication deed](#).