



INTEROPERABILITY UNIT

TAP TSI: ANNEX B.6

ELECTRONIC SEAT/BERTH RESERVATION AND ELECTRONIC PRODUCTION OF TRANSPORT DOCUMENTS - TRANSPORT DOCUMENTS (RCT2 STANDARD)

REFERENCE: ERA/TD/2009-09/INT	DOCUMENT TYPE: TECHNICAL DOCUMENT
VERSION: 1.1	TAP TSI
DATE: 05.05.2011	

AMENDMENT RECORD

Version	Date	Section number	Modification/description
1.1	05.05.2011	All sections	First release

Introduction

The present document belongs to the set of Technical Documents described in Annex III 'List of Technical Documents referenced in this TSI' of the COMMISSION REGULATION (EU) No 454/2011.

**Electronic seat/berth reservation and electronic
production of transport documents - Transport
documents
(RCT2 Standard)**

Application :

With effect from 5 May 2011.

All actors of the European Union falling under the provisions of the TAP TSI.

Contents

Summary	10
1 - Rail Combined Ticket (RCT2)	11
1.1 - General.....	11
1.2 - Ticket design	12
1.2.1 - Preface.....	12
1.2.2 - General provisions	13
1.2.3 - Explanations for the classic RCT2 (without 2D barcodes)	14
1.2.4 - Explanations for the RCT2 compressed with 2D barcodes	15
2 - Terms and conditions for the issue of documents	17
2.1 - General terms and conditions	17
2.1.1 - (Void).....	17
2.1.2 - Languages used - Translation of information	17
2.1.3 - Usage of pictograms.....	17
2.1.4 - Obligatory, optional and conditional information.....	17
2.1.5 - Textual entries for departure and arrival stations	18
2.1.6 - Information to be entered.....	18
2.1.7 - Fields common to all RCT2 documents	18
2.1.8 - Administrative details for the issuing RU, Version 1 stock.....	19
2.1.9 - Administrative details for the issuing RU, Version 2 stock.....	20
2.1.10 - Specimen of RCT2 standard stock, "Field 7" and "Field 8"	22
Point A.1.3 - Specimen No. 32.2 - Ticket + Reservation	22
2.2.1 - Commercial information	22
2.2.2 - Administrative details.....	28
2.2.3 - Specimen RCT2 "TICKET + RESERVATION"	28
2.3 - Ticket.....	28
2.3.1 - Commercial information	28
2.3.2 - Administrative details.....	34
2.3.3 - Specimen RCT2 "TICKETS"	34
2.4 - Reservation	34
2.4.1 - Commercial information	34
2.4.2 - Administrative details.....	39
2.4.3 - Specimen RCT2 "RESERVATION" document	39
2.5 - Supplement	39
2.5.1 - Description	39
2.5.2 - Type 1 Supplement.....	39
2.5.3 - Type 2 Supplement	41
2.5.4 - Type 3 Supplement	43

2.6 - Upgrade.....	44
2.6.1 - Commercial information.....	44
2.6.2 - Administrative details.....	45
2.6.3 - Specimen RCT2 "UPGRADE" document.....	45
2.7 - Change of itinerary	46
2.7.1 - Commercial information.....	46
2.7.2 - Administrative details.....	46
2.7.3 - Specimen RCT2 "CHANGE OF ITINERARY" document	46
2.8 - Boarding pass.....	47
2.8.1 - Commercial information.....	47
2.8.2 - Administrative details.....	48
2.8.3 - Specimen RCT2 "BOARDING PASS" ticket	48
2.9 - Special fares in conjunction with national railcards	48
2.9.1 - Commercial information.....	48
2.9.2 - Administrative details.....	51
2.9.3 - Specimen RCT2 "Special fares in conjunction with national railcards"	51
2.11 - Group ticket	51
2.11.2 - Complementary coupon	54
2.11.3 - Countermark.....	57
2.11.4 - Specimens GROUP travel documents (Version 1)	60
2.11.5 - Group ticket - Version 2.....	60
2.11.6 - Countermark.....	64
2.11.7 - Specimens GROUP travel documents (Version 2)	66
2.12 - INTER RAIL.....	67
2.12.1 - Commercial information.....	67
2.12.2 - Administrative details.....	71
2.12.3 - Specimen RCT2 "InterRail" ticket	71
2.13 - Accompanied Vehicle Coupon.....	72
2.13.1 - Commercial information.....	72
2.13.2 - Administrative details.....	78
2.13.3 - Specimen RCT2 "ACCOMPANIED VEHICLE COUPON"	78
2.14 - Eurail Pass	79
2.14.1 - Eurail Pass alone	79
2.14.1.1 - Commercial information.....	79
2.14.3 - RCT2 "EURAILPASS"	85
2.15 - Travel Voucher for compensation	86
2.15.1 - Commercial information.....	86
2.15.2 - Service information.....	89
2.15.3 - Specimen of RCT2 "TRAVEL VOUCHER" tickets	89

Appendix A - Specimen Travel Documents RCT2.....	90
A.1 - General characteristics of RCT2	90
A.1.1 - Specimen No. 1: Grid indicating Fields, Rows and Columns.....	90
A.1.2 - Specimen No. 2: Stock (Fields 7 and 8) - Version 1.....	92
A.1.3 - Specimen No. 3: Stock (Fields 7 and 8) - Version 2.....	93
A.2 - "TICKET + RESERVATION" document.....	94
A.2.1 - Specimen No.4: RCT2 "TICKET + RESERVATION" - Version 1	94
A.2.2 - Specimen No.5: RCT2 "TICKET + RESERVATION" - Version 2.....	95
A.3 - Ticket	96
A.3.1 - Specimen No. 6: RCT2 "TICKET" - Single journey	96
A.3.2 - Specimen No. 7: RCT2 "TICKET" - Outward and return journey	97
A.3.3 - Specimen No. 8: RCT2 "TICKET" - Round journey	98
A.4 - Reservation document	99
Specimen No. 9: RCT2 "Reservation" document.....	99
A.5 – Supplement	100
A.5.1 - Specimen No. 10: RCT2 Type 1 "SUPPLEMENT"	100
A.5.2 - Specimen No. 11: RCT2 Type 2 "SUPPLEMENT"	101
A.5.3 - Specimen No. 12: RCT2 Type 3 "SUPPLEMENT"	102
A.6 - Upgrade	103
Specimen No. 13: RCT2 "Upgrade" document	103
A.7 - Change of itinerary	104
Specimen No. 14: RCT2 "Change of itinerary" coupon.....	104
A.8 - Boarding Pass.....	105
Specimen No. 15: RCT2 "Boarding Pass"	105
A.9 - Special fares in conjunction with national railcards.....	106
Specimen No. 16: RCT2 "RAIL+PLUS"	106
A.10 - Conditions of issue for the RCT2 "Charter" document.....	107
A.11 - Group Ticket.....	108
A.11.1 - Version 1.....	108
A.11.2 - Version 2.....	111
A.12 - INTER RAIL	114
A.12.1 - Specimen No. 23: RCT2 InterRail global pass	114
A.12.2 - Specimen No. 24: RCT2 InterRail one country pass	115
A.12.3 - Specimen No. 25: RCT2 InterRail complimentary pass.....	116
A.13 - Accompanied Vehicle Coupon	117
A.13.1 - Specimen No. 26: RCT2 "Accompanied vehicle coupon" - Version 1	117
A.13.2 - Specimen No. 27: RCT2 "Accompanied vehicle coupon" - Version 2.....	118
A.14 - EURAIL PASS.....	119
A.14.1 - Specimen No. 28: RCT2 Eurail Pass global ticket.....	119

A.14.2 - Eurail Pass Global Saver	120
A.14.3 - RCT2 Eurail Select Pass.....	122
A.14.4 - Eurail Select Pass.....	125
A.14.5 - Eurail one country Pass	128
A.14.6 - Specimen No. 40: RCT2 Eurail Pass Complimentary Pass	131
A.14.7 - Specimen No. 41: RCT2 Eurail Pass Exchange Ticket	132
A.15 - Travel Voucher for compensation.....	133
A.15.1 - Specimen No. 42: RCT2 "Travel voucher" - version 1	133
A.15.2 - Specimen No. 43: RCT2 "Travel voucher" - version 2	134
Appendix B - Specimen Travel Documents RCT2 compressed standard	135
B.1 - General characteristics of RCT2 compressed standard.....	135
B.1.1 - 2D Barcodes.....	135
B.1.2 - 1 D Barcode	135
B.2 - Specimen grids indicating Fields, Rows and Columns.....	136
B.2.1 - Specimen n° 1: Issuing Railway logo on RCT2 part.....	136
B.2.2 - Specimen n° 2: Issuing Railway logo on 2D barcode part.....	137
B.2.3 - Specimen n° 3: Issuing Railway logo on 2D barcode part - Solution 1 (one Aztec 2D barcode) 138	
B.2.4 - Specimen n° 4: Issuing Railway logo on 2D barcode part - Solution 2 (one Aztec 2D barcode + one 1 D barcode).....	139
B.2.5 - Specimen n° 5: Issuing Railway logo on 2D barcode part - Solution 3 (one PDF417 2D barcode) 140	
B.3 - Ticket document samples.....	141
B.3.1 - Specimen n° 6: RCT2 compressed "TICKET"	141
B.3.2 - Specimen n° 7: RCT2 compressed "TICKET + RESERVATION"	142
Appendix C - Barcode generation	143
C.1 - 2D barcode - AZTEC.....	143
C.1.1 - Step 1: collect all the elements needed in the barcode in the right format	143
C.1.2 - Hash Code generation	148
C.1.3 - Encoding in an AZTEC 2D barcode	151
C.2 - 2D barcode - PDF-417	151
C.2.1 - Step 1: Collecting the elements for the barcode (alphanumerical format)	151
C.2.2 - Step 2: Encoding in a PDF-417	152
C.3 - 1 D barcode in the "AZTEC"-zone.....	153
C.3.1 - Step 1 - Collecting all elements in binary format	153
C.3.2 - Encoding in a 1 D-barcode	154
List of abbreviations.....	155
Bibliography.....	156

Summary

This *Technical Document* describes the RCT2 standard applicable for all transport documents for international and foreign sales which must be produced and issued electronically and are intended for direct fulfilment by railway undertakings (RU) or by ticket vendors subject to the COMMISSION REGULATION (EU) No 454/2011 – “Technical specification for interoperability relating to the subsystem ‘telematics applications for passenger services’ of the trans-European rail system”.

1 - Rail Combined Ticket (RCT2)

1.1 - General

The RCT2 ticket is the standard for the transport document applicable **at the latest by 1.12.2010** for all travel tickets and other transport documents for international and foreign sales which must be produced and issued electronically and are intended for direct fulfilment.

It is designed in particular for issue of combined "Ticket + Reservation" travel documents and thereby allows for products including several services (travel tickets, reservations and any ancillary services) to be commercialised, as the name RCT (Rail Combined Ticket) suggests.

The different types of transport documents described in this Technical Document are as follows:

1. Travel and reservation (see point 2.2),
2. Travel only (see point 2.3),
3. Reservation only (see point 2.4),
4. Supplements 1, 2, 3 (see point 2.5),
5. Upgrade (see point 2.6),
6. Change of itinerary (see point 2.7),
7. Boarding pass (see point 2.8),
8. Rail+Plus type "REDUCED RATE CARD" (see point 2.9),
9. Charter trains or coaches (see point 2.10),
10. Group ticket (see point 2.11)
 - V1, separate issue of a group ticket with complementary coupon and countermark,
 - V2, issue without complementary coupon (forms part of group ticket) with countermark and voluntary group member check.
11. INTER RAIL ticket (see point 2.12),
12. Accompanied vehicle coupon (see point 2.13),
13. EURAIL Pass (see point 2.14),
14. Travel Voucher for compensation (see point 2.15).

In the case of 1., 3., 4., 5., 6. and 12., tickets are issued for a single journey.

In the case of 2. and 10., tickets may be issued for either a single or a return journey or round trip.

Tickets may be issued for one or more passengers in accordance with the terms set out below:

Generally: 1 passenger per RCT2 ticket.

Special cases: Several passengers per RCT2 ticket if not precluded by the tariff:

- up to 5 adults and 1 child for "individual" classification,
- 6 or more adults for "group" tariff classification.

NB : These limits do not necessarily apply for special international services, which may have different specifications.

If the RCT2 is used for reservation purposes only, however, the limits prescribed for each of the passenger accommodation categories remain applicable as defined in ERA TAP TSI Technical Document B.5.

A distinction is made in the reservation procedure between individual passengers and small groups.

"Tickets" and "Reservation" documents need to be issued separately in the following cases:

- if the journey involves a "sleeping berth" reservation (couchette, sleeping car), which may cover its entire length;
- if the journey involves a "seat" reservation and the issuing RU is not the allocating RU.

In the case of "**global-fare**" tickets, however, **one RCT2 ticket** covers both travel and reservation (seat or berth).

The RCT2 compressed standard is also a standard incorporating on the front page one or two barcodes, depending on the solution adopted (see point 1.2.4). This standard is optional, however applicable only in conjunction with 2D barcode(s).

NB : Concerning the Stock number (orange stock), its position is the same both for RCT2 classic and RCT2 compressed standard. With regard to Sector 8 "Administrative details for the issuing railway", Version 1 and Version 2 of the stock, refer to points 2.1.8 and 2.1.9.

1.2 - Ticket design

1.2.1 - Preface

The ticket grid comprises 18 Rows (lettered A to R) and 72 Columns (numbered 1-72) for the classic RCT2 and 86 columns (designated a to n and then numbered 1-72) for the RCT2 compressed. For the explanations and the use of the RCT2 classic, see point 1.2.3 and for the RCT2 compressed, see point 1.2.4.

The grid takes account of the space required for the ATB2 ticket, type 3.

Since, in addition, some RUs (see List of abbreviations) use tickets with a tear-off feature at Column 52, it has been decided not to enter any important information at Column 52 (denoted by a broken line on the base grid) where at all possible.

The ticket is divided into 8 fields (see point 1.2.3). Field outlines may be pre-printed or printed by the terminal at the time of issue.

Certain items of information, either pre-printed or printed by the terminal, can be represented by pictograms.

Where reference is made to elements of messages, these are set out in greater detail in *the Technical Document B.6* (see Bibliography).

1.2.2 - General provisions

The ticket can be:

- either completely blank with the exception of:
 - the stock number,
 - and the security background, as prescribed by the GTT-CIV (see List of abbreviations);
- or completely pre-printed (i.e. with field outlines), in which case the stock number and security background remain obligatory.

Entry of variable data are always printed by the terminal.

1.2.3 - Explanations for the classic RCT2 (without 2D barcodes)

NB : Appendix A contains a specimen general grid (18 Rows x 72 Columns) and a standard specimen for use of fields (specimens n° 1 to n° 3) as well as a specimen for each type of ticket to help explaining the provisions below. The prices printed on the specimens are given purely by way of example to show the positions to be used. They do not in any way represent real prices.

Field 1: Commercial information

Rows A/B	Columns 2 to 14 (RCT2 classic)	Logo or designation of issuing RU
	Columns b to n, or 2 to 14 (RCT2 compressed)	Logo or designation of issuing RU
Row C	Columns 19 to 51 Columns 2 to 4 Columns 6 to 9 Columns 11 to 12 Columns 19 to 51	Designation of product/scheme/service CIV if not on ROW M/N/O code of issuing RU Acronym "AG" for tickets issued by a travel agency Designation of service provider
Row D	Columns 2 to 51 Columns 53 to 71	Notes on period of validity Other remarks

Field 2: Full name of passenger as well as number of adults and children

Rows A/C	Columns 53 to 71
----------	------------------

Field 3: Particulars of route reserved, date and time of departure, date and time of arrival

Rows E/F	Columns 2 to 63	Entry of non-variable data
Row G	Columns 2 to 63	Entry of variable data

Field 4: Class of travel

Rows E/F	Columns 67 to 71	Entry of non-variable data
Row G	Columns 67 to 71	Entry of variable data

Fields 3 and 4:

Row H	Columns 2 to 71	Second segment from Row G
-------	-----------------	---------------------------

Field 5: Details of train, coach, seats/berths reserved, itinerary, carrier(s)

Rows I/J/K/L	Columns 2 to 71	Entry of variable data
--------------	-----------------	------------------------

Field 6: Tariffs adopted (no abbreviations), conditions of use, carrier(s)

Rows M/N/O	Columns 2 to 51	CIV if not on ROW C
------------	-----------------	---------------------

Field 7: Purchase currency and amount per ticket

Rows N/O	Columns 53 to 71
----------	------------------

Field 8: Administrative details for the issuing RU (Version 1)

Row P	Columns 2 to 30	Booking number for seat reservations/PNR
Row Q	Columns 2 to 30	Stock number (orange block)/issuing office
Row R	Columns 2 to 51	Serial number/Issuing office number/ code/ Date of issue/Time of issue

Remaining boxes can be used at the discretion of the issuing RU to meet national provisions (e.g. VAT details) or for sundry customer service information.

Field 8: Administrative details for the issuing RU (Version 2)

Row P	Columns 24 to 37	Booking number for seat reservations
Row Q	Columns 24 to 34	Serial number
	Columns 53 to 71	PNR (see - List of abbreviations)
Row R	Columns 14 to 51	Issuing office/Date of issue/Time of issue/ Issuing office number
Row S	Columns 13 to 23	Stock number (orange block)

Remaining boxes can be used at the discretion of the issuing RU to meet national provisions (e.g. VAT details) or for sundry customer service information.

1.2.4 - Explanations for the RCT2 compressed with 2D barcodes

NB : Appendix B contains a specimen general grid (18 Rows x 14 + 72 Columns) and a standard specimen for use of fields, namely the basic RCT2 grid (specimens n° 1 to n° 5) and 2D barcode(s) with two samples for "Ticket" and "Ticket + Reservation" (specimens n° 6 and n° 7); for the specimens describing each type of tickets (RCT2 layout), see Appendix A. The prices printed on the specimens are given purely by way of example to show the positions to be used. They do not in any way represent real prices.

Where no other rules are specified, provisions under point 1 .2.3 apply.

The "**RCT2 compressed standard**" is set out in order to print the main information elements of the electronically issued tickets in machine-readable form as 2D barcode(s) on the front left hand side of the ticket, for check-in and after sales activities. The 2D barcode(s) allow(s) additional encoded elements for security and verification process. The use of the "**RCT2 compressed standard**" is optional, but when adopted by a RU, it is to be used only in case of simultaneous application of 2D barcode(s).

The "**RCT2 compressed standard**" consists of a grid with 86 columns, of which the first 14 columns (a-n) are reserved for printing the 2D barcode(s), while the remaining 72 (1-72) follow the same rules as the classic RCT2 standard.

The grid takes account of the space required for the dimensions defined in the GTT-CIV. Column 52 remains empty.

The following solutions (at the current state of technology) are allowed:

- In the empty space, the RCT2 compressed standard ticket can contain only one Aztec 2D barcode (see sample in Appendix B), including the above mentioned information elements, for check-in and after sales activities, plus encoded elements for security and verification process. The remaining space must be invalidated with a "Z" made from asterisks (see sample in point B.2.3).
- In the empty space, the RCT2 compressed standard ticket can contain one Aztec 2D barcode, including the above mentioned information elements, for check-in and after sales activities, plus encoded elements for security and verification process and, below, one 1 D barcode for general purposes (see sample in point B.2.4) at discretion of the RU.
- In the empty space, the RCT2 compressed standard ticket can contain PDF417 barcode(s) (see sample in point B.2.5), including the above mentioned information elements, for check-in and after sales activities, plus encoded elements for security and verification process.

The columns 1 to 72 are divided into **8 sectors** (see point 1.2.3). Field outlines may be pre-printed or printed by the terminal at the time of issue.

Certain items of information, either pre-printed or printed by the terminal can be represented by pictograms.

Where reference is made to elements of messages, *Technical Document B.5* (see Bibliography) applies.

2D barcode(s): RCT2 compressed standard - details for barcodes

Solution 1

Rows C to I, Columns a to m	space dedicated to the printing of the Aztec 2D barcode
Rows J to P, Columns a to m	space dedicated to the printing of a "Z" made from asterisks (see sample in Appendix D)

(max dimensions of the 2D barcode are 27 x 27 mm)

Solution 2

Rows C to I, Columns a to m	space dedicated to the printing of the Aztec 2D barcode (max dimensions of the 2D barcode are 27 x 27 mm)
Rows J to P, Columns a to m	space dedicated to the printing of 1 D barcode (see sample in Appendix D)

Space must be left between the two barcodes

Solution 3

Rows C to P, Columns a to m	space dedicated to the printing of one or two PDF41 7 2D barcode(s) depending on the data to be contained (check-in/after sales; security features)
-----------------------------	---

(max width of the PDF41 7 2D barcode(s) is 27 mm)

Type and technical specifications for the 2D barcode(s) are given in Appendix D.

2 - Terms and conditions for the issue of documents

2.1 - General terms and conditions

2.1.1 - (Void)

2.1.2 - Languages used - Translation of information

The name of the type of transport document must be given in the language of the country of issue and this information may also appear additionally in other languages. Station names must be written in the language of the country in which the station is located (names used by the RUs). Other particulars shall be printed only in the language of the country of issue. The division of the RCT2 into accurately identifiable Fields and positions obviates the need to translate some data. Similarly, the use of pictograms by an issuing RU renders it unnecessary to translate the corresponding data.

In the pages that follow, information requiring translation is marked **(T)**.

2.1.3 - Usage of pictograms

Pictograms are permitted as a means of symbolising:

- date of departure,
- time of departure,
- date of arrival,
- time of arrival,
- train number.

The possibility of using pictograms is shown in the following pages next to the elements concerned. To this end, RUs may deploy pictograms already used on existing reservation documents.

2.1.4 - Obligatory, optional and conditional information

The respective priority of a given piece of information is denoted by the letter **(M)** for "mandatory" or **(O)** for "optional" (French for "optional").

In cases where specific circumstances determine whether information is to be entered, the letter **(C)** is used to denote its conditional nature.

The abbreviation "AG", or equivalent, is used to denote travel agencies.

2.1.5 - Textual entries for departure and arrival stations

Textual details regarding departure and arrival stations will retain the length adopted for 17 alphabetic characters.

2.1.6 - Information to be entered

Information to be entered is divided into 2 groups:

- commercial information, primarily intended for the customer, but also for the selling group and ticket inspectors,
- administrative (service) information, generally intended for RU personnel only.

2.1.7 - Fields common to all RCT2 documents

Exceptions are set out in the text relating to the relevant travel document and on the relevant specimen in AppendixA.

FIELD 7

Details of purchase currency and price per ticket

Row N

Details of price in the national currency **(M)**.

Columns 53 to 71

Indication: "PRICE" **(O)**, since some currencies require more space than others to print prices in their national currency
+ 1 blank,
+ currency acronym **(M)**
+ 1 blank,
+ amount

There are no strict rules as regards column allocation, since the translation of the word "PRICE" may necessitate more than 5 characters in other languages. Furthermore, the amount of space needed for the actual price may require fewer positions than the same amount expressed in another currency.

However, the following rules are mandatory:

- row N: columns 53 to 71 to be used,
- blank column to be left between each item of information in the following manner: "PRICE"/blank/currency code of issuing country in ISO format (3 alphabetic characters)/blank/amount,
- amount to be printed to 2 decimal figures, flush right,
- columns not used for the price must be invalidated with at least two cancellation characters, i.e. ** or xx.

or

- amount to be printed to 2 decimal figures, flush right,
- currency acronym of issuing country to be tied to amount being charged in a single string of characters (string with one blank space).

Column 72

Blank.

Row O Details of price in the single European currency (**F, C**).
For the time being, this information is optional and conditional, since some RUs will enter this currency on the strength of decisions by their national governments.
Since the indication "PRICE" is already printed for the currency of the country of issue, it is sufficient to enter the ISO currency code for the single European currency plus the amount flush right. Cancellation characters must also invalidate unused Columns (see Row N).
NB : if one currency only is required, details of method of payment may be entered in this Row, e.g. payment in cash or CC (credit card).
Service fee has to be printed right aligned on row P.

2.1.8 - Administrative details for the issuing RU, Version 1 stock

FIELD 8

Row P

Column 1 Blank.
Columns 2 to 15 Booking number for seat/berth reservation.
Column 16 Blank.
Columns 17 to 30 PNR designation.
Column 31 Blank.
Columns 32 to 71 right aligned: [Incl. or Excl.] then [SERVICE FEE] then Currency [EUR], [SKK],...) then [+] if excl. then [amount price](O) (and C: if there is a service fee it can be also printed on an separate ticket. If not, it must be in this field)

Row Q

Column 1 Blank.

RCT2 classic

Columns 2 to 12 Stock number (orange block).

RCT2 compressed standard

Columns b to l Stock number (orange block).

Column 13 Blank.

Columns 14 to 30 Issuing office, 17 characters.

Column 31 Blank.

Columns 32 to 71 At discretion of issuing RU.

Row R

Column 1 Blank.

Columns 2 to 12 Serial number of issuing system/stock no.

Columns 13 Blank

Columns 14 to 30 Issuing office number or designation of service.

Column 31 Blank.

Columns 32 to 36 code for issuing office.

Column 37 Blank.

Columns 38 to 45 Date of issue in the format DDMMYY or DD.MM.YY or DD/MM/YY (DD = day, MM = month, YY = year).

Column 46 Blank.

Columns 47 to 51 (h = hour, m = minute).	Time of issue in the format hh.mm or hh:mm or hhmm
Column 52	Blank.
Columns 53 to 66	At discretion of issuing RU.
Columns 67 to 71	Page numbering (O) (unique contract reference)

2.1.9 - Administrative details for the issuing RU, Version 2 stock

FIELD 8

Row P

Column 1	Blank.
Columns 2 to 27	At discretion of issuing RU.
Column 28	Blank.
Columns 29 to 42	Booking number for seat/berth reservation.
Column 43	Blank.
Columns 44 to 71	right aligned: [incl. or excl.] then [SERVICE FEE] then Currency [EUR], [SKK],...) then [+] if excl. then [amount price](O) (and C: if there is a service fee it can be also printed on an separate ticket. If not, it must be in this field)

Row Q

Column 1	Blank.
Columns 2 to 27	At discretion of issuing RU.
Column 28	Blank.
Columns 29 to 39	Serial number of issuing system.
Column 40	Blank.
Columns 41 to 51	At discretion of issuing RU.
Column 52	Blank.
Columns 53 to 71	PNR designation.

Row R

Column 1	Blank.
Columns 2 to 12	At discretion of issuing RU.
Column 13	Blank.
Columns 14 to 27	Issuing office.
Column 28	Blank.
Columns 29 to 34	Date of issue in the format DDMMYY.
Column 35	Blank.
Columns 36 to 40	Time of issue in the format hh.mm or hh:mm or hhmm.
Column 41	Blank.
Columns 42 to 51	Issuing office no. or designation of service.
Column 52	Blank.
Columns 53 to 66	At discretion of issuing RU.
Columns 67 to 71	Page numbering (O) (unique contract reference)

Row S

RCT2 classic

Columns 13 to 23

Stock number (orange block).

RCT2 compressed standard

Columns m-n/1-9

Stock number (orange block).

2.1.10 - Specimen of RCT2 standard stock, "Field 7" and "Field 8"

2.1.10.1 - Version 1 stock

Point A.1 .2 - Specimen No. 2

2.1.10.2 - Version 2 stock

Point A.1.3 - Specimen No. 32.2 - Ticket + Reservation

2.2.1 - Commercial information

FIELD 1

Row A

Column 1 Blank.

RCT2 classic

Columns 2 to 14 Acronym or logo of the RU responsible for issuing the RCT2 document **(M)**.

RCT2 compressed standard

Columns b to n, or 2 to 14 Acronym or logo of the RU responsible for issuing the RCT2 document **(M)**.

Columns 15 to 18 Blank.

Columns 19 to 51 RCT2 title "TICKET + RESERVATION", flush left **(M) (T)**.

Column 52 Blank. For RUs operating with a tear-off feature at column 52, this position corresponds to the perforation.

Row B

Column 1 Blank.

RCT2 classic

Columns 2 to 14 *Acronym or logo of the RU responsible for issuing the RCT2 document (cont. from row A, otherwise blank) (C).*

RCT2 compressed standard

Columns b to n, or 2 to 14 Acronym or logo of the RU responsible for issuing the RCT2 document (cont. from row A, otherwise blank) **(C)**.

Columns 15 to 18 Blank (not to be used)

Columns 19 to 51 *RCT2 title (cont. from row A) for RUs required to enter this in a second language (C).*

Column 52 *Blank. For RUs operating with a tear-off feature at column 52, this position corresponds to the perforation.*

Row C

Column 1 Blank.

Columns 2 to 12 *Company code of the issuing Undertaking (M) and Abbreviation "AG", or equivalent, for tickets issued by travel agencies (O). No used column has to be blank.*

European Railway Agency

ERA/TD/2009-09/INT: ANNEX B.6 of TAP TSI

Columns 13 to 18 Blank.
Columns 19 to 51 Commercial description of train.
For example: EUROSTAR, CITYNIGHT LINE, THALYS,...
This information is to be printed flush left **(C)** or **(M)** as determined by the operator.

Column 52 Blank. For RUs operating with a tear-off feature at column 52, this position corresponds to the perforation.

Row D

Column 1 Blank.

Columns 2 to 51 Details of conditions for specific services. For example: "CHECK-IN" for EUROSTAR (C); otherwise, blank.

Column 52 Blank.
Columns 53 to 72 Blank.
These columns are initially left blank. If additional information is required for market analysis or customer loyalty schemes - "frequent traveller" (individual or corporate) for instance - it could be inserted here (C).

FIELD 2

Information detailing passenger's full name plus number of adults and children

Row A

Columns 53 to 71 Passenger's full name. This information generally relates to an "individual", "group" or "corporate" passenger and is entered flush left **(C)**.
Some RUs print the given name before the family name. This is a matter for the issuing RU to decide. However, where the entry is too long, it is the given name that must be truncated so that the family name can be printed in full.

Column 72 Blank.

Row B

Columns 53 to 71 *Number of adults indicated by a double-digit numeral. Where only a single digit is required, this is preceded by either a zero or an asterisk, e.g. 01 or *1 (M).*
Number of adults to be followed by a blank (M).
Indication: "ADULT". This does not need to be translated when entered in row B (M).

Column 72 Blank.

Row C

Columns 53 to 71 *Number of children indicated by a double-digit numeral. Where only a single digit is required, this is preceded by either a zero or an asterisk, e.g. 01 or *1 (M).*
Number of children to be followed by a blank (M).
Indication: "CHILD(REN)". This is not translated when it appears in row C (M).
In cases where there are more than one age groups, the indication "CHILD(REN)" must be followed by the indication of the age (M).

NB : suitably equipped RUs may enter details of a child's age in field 6.

Column 72 Blank.

or

Row B

Columns 53 to 71 *Number of seats/berths indicated by a double-digit numeral. Where only a single digit is required, this is preceded by either a zero or an asterisk, e.g. 01 or *1 (M).*
 Number of seats/berths is followed by a blank **(M)**.
 Indication: "SEAT(S)/BERTH(S)". This does not need to be translated **(M)**
 - cf. element 23A of message Technical Document B.6.

Column 72 Blank.

Row C

Columns 53 to 72 Blank.

FIELD 3

Details of route reserved together with dates and times of departure and arrival.

Rows E/F Entry of non-variable data

Column 1 Blank.

Columns 2 to 6 Details of date of departure, i.e. the indication "DATE" or a suitable pictogram **(M)**.
 Where the word "DATE" is printed, it is not translated, since it always appears in this box.

Column 7 Blank.

Columns 8 to 12 Details of time of departure, i.e. the indication "TIME" or a suitable pictogram **(M)**.
 Where the word "TIME" is printed, it is not translated, since it always appears in this box.

Column 13 Blank.

Columns 14 to 30 Indication: "DEPARTURE" or "FROM", flush left **(M)**.

Columns 31 to 34 Arrow pointing from left to right. This arrow can be symbolised by successive "dash" (-) and "greater than" (>) characters or, for RUs unable to print an arrow, by a dash **(O)**.

Columns 35 to 51 Indication: "ARRIVAL" or "TO", flush left **(M)**.

Column 52 Blank.

Columns 53 to 57 Details of date of arrival, i.e. the indication "DATE" or a suitable pictogram **(M)**.
 Same comments with regard to translation as for date of departure.

Column 58 Blank.

Columns 59 to 63 Details of time of arrival, i.e. the indication "TIME" or a suitable pictogram **(M)**.
 Same comments with regard to translation as for time of departure.

Columns 64 to 66 Blank.

Row G Entry of variable data

Column 1 Blank.

Columns 2 to 6 Date of departure in the format DD/MM or DD.MM (DD = day, MM = month)
 – cf. element 21A of message Technical Document B.6 **(M)**.

Column 7 Blank.

Columns 8 to 12 Time of departure in the format hh.mm (h = hours, m = minutes) or hh:mm within the 24-hour system - cf. element 41A of Technical Document B.6 **(M)**.

European Railway Agency

ERA/TD/2009-09/INT: ANNEX B.6 of TAP TSI

<i>Column 13</i>	Blank.
<i>Columns 14 to 30</i>	Name of departure station in 17 characters, flush left (M) .
<i>Columns 31 to 34</i>	Arrow pointing from left to right. This arrow can be symbolised by successive "dash" (-) and "greater than" (>) characters or, for RUs unable to print an arrow, by a dash (O) .
<i>Columns 35 to 51</i>	Name of arrival station in 17 characters, flush left (M) .
<i>Column 52</i>	Blank.
<i>Columns 53 to 57</i>	Date of arrival in the format DD/MM or DD.MM (DD = day, MM = month) - cf. element 21 H of message Technical Document B.6 (C) .
<i>Column 58</i>	Blank.
<i>Columns 59 to 63</i>	Time of arrival in the format hh.mm (h = hours, m = minutes) or hh:mm with the 24-hour system being used - cf. element 41 H of message Technical Document B.6 (C) .
<i>Columns 64</i>	Blank.

FIELD 4 **Details of class of travel. Field 4 is boxed off for added emphasis**

Rows E/F

Columns 67 to 71 Indication: "CLASS" **(M)**.

Column 72 Blank.

Row G

Columns 67 to 71 Details of class, centred **(C)**.

If no indication of class is transmitted by the issuing system, these columns are left blank or invalidated with ** - cf. element 24 of message Technical Document B.6.

Column 72 Blank.

FIELD 3 and 4

Row H

Column 1 Blank.

Columns 2 to 71 Invalidation of columns reserved for the return journey by means of an asterisk or the letter x, as shown on the "Ticket + Reservation" RCT2 specimen (see point 2.2.3).

These columns may, however, be used in traffic between partner RUs for customer service entries - cancellation of a ticket for subsequent refunding, for example.

Column 72 Blank.

FIELD 5 **Details of train, coach and seats/berths reserved**

Row I

Column 1 Blank.

Columns 2 to 6 Indication: "TRAIN" or corresponding pictogram, flush left **(M)**.

Column 7 Blank.

Columns 8 to 12 Train number, flush right **(M)**.

European Railway Agency

ERA/TD/2009-09/INT: ANNEX B.6 of TAP TSI

<i>Column 13</i>	Blank.
<i>Columns 14 to 16</i>	Train category, flush right - cf. element 48 of message Technical Document B.6 (C) .
<i>Column 17</i>	Blank.
<i>Columns 18 to 25</i>	Indication: "COACH", flush left (M) .
<i>Column 26</i>	Blank.
<i>Columns 27 to 29</i>	Coach number, flush right (M) .
<i>Columns 30 to 32</i>	Blank.
<i>Columns 33 to 47</i>	Indication: "SEAT", "COUCHETTE" or "SLEEPING BERTH", flush left (M) .
<i>Column 48</i>	Blank.
<i>Columns 49 to 71</i>	Numbering of seat(s)/berth(s) booked (M) . Indication: "SEATING IF AVAILABLE" in the event of overbooking (C) .
<i>Column 72</i>	Blank.
Row J	
<i>Columns 1 to 32</i>	Blank.
<i>Columns 33 to 71</i>	Numbering of seats/berths booked (see Row I) (C) .
<i>Column 72</i>	Blank.
Row K	
<i>Column 1</i>	Blank.
<i>Columns 2 to 31</i>	Indication: "SMOKING" or "NON SMOKING" plus the type of compartment booked - cf. element 51 of message Technical Document B.6 (M) .
<i>Column 32</i>	Blank.
<i>Columns 33 to 71</i>	Numbering of seats/berths booked (see Row I) (C) or else the indication "UPPER", "MIDDLE", "LOWER", "WINDOW", "MIDDLE", "CORRIDOR" or "SOLO WINDOW" (M) . When entering the number of seats/berths booked, RUs have the choice of using a single or double-digit numeral (e.g. 1 WINDOW or 01 WINDOW).
<i>Column 72</i>	Blank.
Row L	
<i>Column 1</i>	Blank.
<i>Columns 2 to 31</i>	Indication: "SMOKING" or "NON SMOKING" plus the type of compartment booked - cf. element 51 of message Technical Document B.6 (M) .
<i>Column 32</i>	Blank.
<i>Columns 33 to 71</i>	Numbering of seats/berths booked (see Row I) (C) or else the indication "UPPER", "MIDDLE", "LOWER", "WINDOW", "MIDDLE", "CORRIDOR", "SOLO WINDOW" (M) . When entering the number of seats/berths booked, RUs have the choice of using a single or double-digit numeral (e.g. 1 WINDOW or 01 WINDOW).
<i>Column 72</i>	Blank.

FIELD 6 **Details of applicable tariff(s) and any special condition(s) of use, and of carrier(s)**

Rows M/N/O

Column 1 Blank.

Columns 2 to 3 Number of passengers per tariff used **(M)**, since this depends on the number of passengers per ticket, i.e. whether ticketing is individual or global. In the case of individual ticketing this information is optional.

The number of passengers can be indicated using a single or 2-digit numeral, e.g. 1 or 01, given that the full two-digit numeral, e.g. 01, is already entered in field 2.

Column 4 Blank.

Columns 5 to 36 Tariff designation **(M)**, since the tariff designation is obligatory only where it differs from the Full Tariff

+ 1 blank,

+ special comments relating to the tariff, e.g. "ISSUED SUBJECT TO CONDITIONS" **(C)**.

Tariff designations can differ in length, while translation of special comments can also take up a greater or lesser amount of space; accordingly, the only definitive requirement is that a blank column be left between the number of passengers and the tariff designation and between the tariff designation and any special comments.

Column 37 Blank.

Columns 38 to 51 Identification of carrier(s) for the journey. CIV (M) must be printed anywhere in this zone. GCC (C) or local translation (CGT, VPP,...) must be printed anywhere in this zone if it's not already on the back of the ticket.

Column 52 Blank.

Row M

Columns 38 to 51 Identification "CARRIER:" flush left **(M)** or 4-digit codes of the first, second and third carriers for this journey should there be more than 6 - cf. element 79 of message Technical Document B.6. These codes will be flush left and separated by blanks **(C)**.

Columns 53 to 72 Blank.

Row N

Columns 38 to 51 4-digit code of the first, second, and third carrier for this journey, or of the fourth, fifth and sixth, should there be more than 6 - cf. element 79 of message Technical Document B.6 **(M)**. These codes will be flush left and separated by blanks **(C)**.

Row O

Columns 38 to 51 4-digit code of the fourth, fifth and sixth carriers for this journey, or of the seventh, eighth or ninth should there be more than 6 - cf. element 79 of message Technical Document B.6 **(M)**. These codes will be flush left and separated by blanks **(C)**.

FIELD 7 **Details of purchase currency and price per ticket**

The general terms and conditions apply (see point 2.1 .7).

2.2.2 - Administrative details

FIELD 8 The general terms and conditions apply (see points 2.1.8 or 2.1.9).
The details required are printed.

2.2.3 - Specimen RCT2 "TICKET + RESERVATION"

Point A.2.1 - Specimen No. 4 - Version 1.

Point A.2.2 - Specimen No. 5 - Version 2.

2.3 - Ticket

2.3.1 - Commercial information

FIELD 1

Row A

Column 1 Blank.

RCT2 classic

Columns 2 to 14 Acronym or logo of the RU responsible for issuing the RCT2 document **(M)**.

RCT2 compressed standard

Columns b to n, or 2 to 14 Acronym or logo of the RU responsible for issuing the RCT2 document **(M)**.

Columns 15 to 18 Blank.

Columns 19 to 51 RCT2 title "TICKET", flush left **(M) (T)**.

Column 52 Blank. For RUs operating with a tear-off feature at column 52, this position corresponds to the perforation.

Column 72 Blank.

Row B

Column 1 Blank.

RCT2 classic

Columns 2 to 14 Acronym or logo of the RU responsible for issuing the RCT2 document (cont. from row A, otherwise blank) **(C)**.

RCT2 compressed standard

Columns b to n, or 2 to 14 Acronym or logo of the RU responsible for issuing the RCT2 document (cont. from row A, otherwise blank) **(C)**.

Columns 15 to 18 Blank (not to be used).

Columns 19 to 51 RCT2 title (cont. from row A) for RUs required to enter this information in a second language **(C)**.

Column 52 Blank. For RUs operating with a tear-off feature at column 52, this position corresponds to the perforation.

European Railway Agency

ERA/TD/2009-09/INT: ANNEX B.6 of TAP TSI

Row C

Column 1 Blank.

Columns 2 to 12 RICS code of the issuing Undertaking (M) and Abbreviation [AG], or equivalent, for tickets issued by travel agencies (O). No used column has to be blank. [CIV] (M) can be printed anywhere in this zone if not in ROW M/N/O.

Columns 13 to 52 Blank.

Row D

Column 1 Blank.

Columns 2 to 51 Details of validity of ticket, e.g.: "VALID (FROM!:) DD!MM!YYYY (TO!-) DD!MM!YYYY" or "VALID (FROM!:) DD.MM.YYYY (TO!-) DD.MM.YYYY" (DD = day, MM = month and YY or YYYY = year) **(M)**
RUs which cannot print the year using four figures may continue to use two.

Columns 52 to 72 Blank.

These columns are initially left blank. If additional information is required for market analysis or customer loyalty schemes - "frequent traveller" (individual or corporate) for instance - it could be inserted here **(C)**.

FIELD 2

Information detailing passenger's full name plus number of adults and children

Row A

Columns 53 to 71 Passenger's full name. This information generally relates to an "individual", "group" or "corporate" passenger and is entered flush left **(C)**.

Some RUs print the given name before the family name. This is a matter for the issuing RU to decide. However, where the entry is too long, it is the given name that must be truncated so that the family name can be entered in full.

Column 72 Blank.

Row B

Columns 53 to 71 Number of adults indicated by a double-digit numeral. Where only a single digit is required, this is preceded by either a zero or an asterisk, e.g. 01 or *1 (M).

Number of adults to be followed by a blank (M).

Indication: "ADULT". This does not need to be translated when entered in row B (M).

Column 72 Blank.

Row C

Columns 53 to 71 Number of children indicated by a double-digit numeral. Where only a single digit is required, this is preceded by either a zero or an asterisk, e.g. 01 or *1 (M).

Number of children to be followed by a blank (M).

Indication "CHILD(REN)" followed by their age if necessary (see Note). E.g. 01 CHILD 15 Y. This information does not need to be translated when entered in row C (M).

In cases where there are more than one age groups, the indication "CHILD(REN)" must be followed by the indication of the age (M).

Suitably equipped RUs may enter details of a child's age in field 6.

NB : Details of child's age where this has a bearing on ticket inspection procedures for an RU. The information to be entered depends on the issuing RU. Assuming a 15-year-old has to travel on a cross border train operated by carriers A and B, and assuming carrier A sets at 14 the age threshold between child and adult, and carrier B at 16:

- if the ticket is issued by A, the following information is entered: "01 ADULT 15 YEARS". This 15-year-old passenger is considered an adult for the purposes of carrier A, whilst Railway staff of B can see that the youth's age has been taken into account when establishing the fare (from the border);
- if the ticket is issued by B, the following information is entered: "01 CHILD 15 YEARS". Here, the passenger is considered a child by carrier B, whilst the entry indicates to Railway staff of A that the youth's age (adult for A) is reflected in the price (from the border)

Column 72 Blank.

FIELD 3 Details of departure and arrival stations together with dates and times of departure and arrival

Rows E/F Entry of non-variable data

Column 1 Blank.

Columns 2 to 6 Details of date of departure, i.e. the indication: "DATE" or a suitable pictogram **(M)**.

Where the word "DATE" is printed, it is not translated, since it always appears in this box.

Column 7 Blank.

Columns 8 to 12 Details of time of departure, i.e. the indication: "TIME" or a suitable pictogram **(M)**.

Where the word "TIME" is printed, it is not translated, since it always appears in this box.

Column 13 Blank.

Columns 14 to 30 Indication: "DEPARTURE" or "FROM", flush left **(M)**.

Columns 31 to 34 Arrow pointing from left to right. This arrow can be symbolised by successive "dash" (-) and "greater than" (>) characters or, for RUs unable to print an arrow, by a dash **(O)**.

Columns 35 to 51 Indication: "ARRIVAL" or "TO", flush left **(M)**.

Column 52 Blank.

Columns 53 to 57 Details of date of arrival, i.e. the indication "DATE" or a suitable pictogram **(M)**.

Same comments with regard to translation as for date of departure.

European Railway Agency

ERA/TD/2009-09/INT: ANNEX B.6 of TAP TSI

<i>Columns 58</i>	Blank.
<i>Columns 59 to 63</i>	Details of the time of arrival, i.e. the indication "TIME" or a suitable pictogram (M) .
Same comments with regard to translation as for time of departure.	
<i>Columns 64 to 66</i>	Blank.
Row G	Entry of variable data for the outward journey
<i>Column 1</i>	Blank.
<i>Columns 2 to 6</i>	Invalidate with an asterisk (M) .
<i>Column 7</i>	Blank.
<i>Columns 8 to 12</i>	Invalidate with an asterisk (M) .
<i>Column 13</i>	Blank.
<i>Columns 14 to 30</i>	Name of departure station in 17 characters, flush left (M) .
<i>Columns 31 to 34</i>	Arrow pointing from left to right. This arrow can be symbolised by successive "dash" (-) and "greater than" (>) characters or, for RUs unable to print an arrow, by a dash (M) .
<i>Columns 35 to 51</i>	Name of arrival station in 17 characters, flush left (M) .
<i>Column 52</i>	Blank.
<i>Columns 53 to 57</i>	Invalidate with an asterisk (M) .
<i>Column 58</i>	Blank.
<i>Columns 59 to 63</i>	Invalidate with an asterisk (M) .

FIELD 4 **Details of class of travel. Field 4 is boxed off for added emphasis**

Rows E and F

<i>Columns 67-71</i>	Indication: "CLASS" (M) .
<i>Column 72</i>	Blank.

Row G

<i>Columns 67-71</i>	Detail of class, centred (M) .
<i>Column 72</i>	Blank.

FIELDS 3 and 4

Row H Entry of variable data for the return journey

Same information as that given for the outward journey. The same areas to be invalidated with an asterisk.

Where a single (one way) journey is involved, the columns reserved for departure and arrival stations are also to be invalidated with an asterisk **(M)**.

Where a return journey is involved, class of travel is not to be indicated a second time and the relevant columns are left blank **(M)**.

FIELD 5 **Details of itinerary on ticket and carrier(s)**

Two types of entry of variable data are possible for Field 5:

Version 1

Rows I and J Details of itinerary for outward journey and carrier(s)

Row I

Column 1 Blank.

Columns 2 to 71 Indication: "OUTWARD: VIA", flush left + names of intermediate stations on the outward journey each being preceded by the carrier's 4-digit code **(M)**. A blank will separate each carrier's code from each intermediate station's name.

These columns are not rigidly allocated, since their number may vary according to the language used. A blank must be left following "OUTWARD: VIA" or its equivalent.

Column 72 Blank.

Row J

Column 1 Blank.

Columns 2 to 71 Carrier code and intermediate stations on the outward journey (cont.) **(C)**.

Column 72 Blank.

NB : "OUTWARD: VIA" may be replaced by "VIA →".

Rows K and L Details of itinerary for the return journey and carrier(s)

Row K

Column 1 Blank.

Columns 2 to 71 Indication: "RETURN: VIA", flush left + names of intermediate stations on the return journey each being preceded by the carrier's 4-digit code **(M)**.

A blank will separate each carrier's code from each intermediate station's name.

These columns are not rigidly allocated, since their number may vary according to the language used. A blank column must be left following "RETURN: VIA".

Where a single journey is involved, the row has to be invalidated with 2 asterisks after the indication "VIA".

Column 72 Blank.

Row L

Column 1 Blank.

Columns 2 to 71 code(s) of carrier(s) and intermediate stations on the return journey (cont.) **(C)**. Blank in the case of a single journey.

Column 72 Blank.

NB : "RETURN: VIA" may be replaced by "VIA ←".

Version 2

Where outward and return journey follow the same route, it is only necessary to print the itinerary once if the same carriers are being used for both the outward and return journey.

Rows I/J/K/L

Column 1 Blank.

Columns 2 to 71 Entry of the term "VIA", flush left + names of intermediate stations of the outward journey, each being preceded by the 4-digit code of the carrier for the journey to each of these stations **(M)**.

These columns are not rigidly allocated, since their number may vary according to the language used.

A blank must be left following "VIA" as well as between each carrier code and each station.

Column 72 Blank.

FIELD 6 **Details of applicable tariff(s) and any special condition(s) of use**

Rows M/N/O

Column 1 Blank.

Columns 2 to 3 Number of passengers per tariff used **(M)**.

The number of passengers can be indicated using a single or double-digit numeral, e.g. 1 or 01, given that the full two-digit numeral, e.g. 01, is already entered in field 2.

Column 4 Blank.

Columns 5 to 51 Tariff designation **(M)**

+ 1 blank,

+ special comments relating to the tariff, e.g. "SUBJECT TO SPECIAL CONDITIONS" **(C)**.

Tariff designations can differ in length, while translation of special comments can also take up a greater or lesser amount of space; accordingly, the only definitive requirement is that a blank be left between the number of passengers and the tariff designation and between the tariff designation and any special comment. CIV (M) can be printed anywhere in this zone if not in ROX C. GCC (C) or local translation (CGT, VPP,...) must be printed anywhere in this zone if it's not already on the back of the ticket.

Column 52 Blank.

Row M

Columns 53 to 72 Blank.

FIELD 7 **Details of purchase currency and price per ticket**

The general terms and conditions apply (see point 2.1 .7).

2.3.2 - Administrative details

FIELD 8 The general terms and conditions apply (see points 2.1.8 or 2.1.9).
The details required are printed.

2.3.3 - Specimen RCT2 "TICKETS"

2.3.3.1 - Single journey

Point A.3.1 - Specimen No. 6.

2.3.3.2 - Return journey

Point A.3.2 - Specimen No. 7.

2.3.3.3 - Round trip

Point A.3.3 - Specimen No. 8.

2.4 - Reservation

2.4.1 - Commercial information

FIELD 1

Row A

Column 1 Blank.

RCT2 classic

Columns 2 to 14 Acronym or logo of the RU responsible for issuing the RCT2 document **(M)**.

RCT2 compressed standard

Columns b to n, or 2 to 14 Acronym or logo of the RU responsible for issuing the RCT2 document **(M)**.

Columns 15 to 18 Blank.

Columns 19 to 51 RCT2 title "RESERVATION", flush left **(M) (T)**.

Column 52 Blank. For RUs operating with a tear-off feature at column 52, this position corresponds to the perforation.

Row B

Column 1 Blank.

RCT2 classic

Columns 2 to 14 Acronym or logo of the RU responsible for issuing the RCT2 document (cont. from row A, otherwise blank) **(C)**.

RCT2 compressed standard

Columns b to n, or 2 to 14 Acronym or logo of the RU responsible for issuing the RCT2 document (cont. from row A, otherwise blank) **(C)**.

Columns 15 to 18 Blank (not to be used).

European Railway Agency

ERA/TD/2009-09/INT: ANNEX B.6 of TAP TSI

Columns 19 to 51 RCT2 title (cont. from row A) for RUs required to enter this information in a second language **(C)**.

Column 52 Blank. For RUs operating with a tear-off feature at column 52, this position corresponds to the perforation.

Row C

Column 1 Blank.

Columns 2 to 4 "CIV" acronym where a reservation is issued for a journey through two or more countries **(C)**.

Envisaged as **(C)** despite not being necessary for reservations so as to save RUs with pre-printed documents or templates unnecessary printouts.

Column 5 Blank.

Columns 6 to 9 code of the issuing RU, flush right **(M)**.

Column 10 Blank.

Columns 11 to 12 Abbreviation "AG", or equivalent, for tickets issued by travel agencies **(C)**.

Columns 13 to 52 Blank.

Row D

Columns 1 to 72 Blank.

FIELD 2 Information detailing the passenger's full name and the number of seats/berths reserved

Row A

Columns 53 to 71 Passenger's full name. This information generally relates to an "individual", "group" or "corporate" passenger and is entered flush left **(C)**.

Some RUs print the given name before the family name. This is a matter for the issuing RU to decide. However, where the entry is too long, it is the given name that must be truncated so that the family name can be entered in full.

Column 72 Blank.

Row B

Columns 53 to 71 Number of seats/berths indicated by a double-digit numeral. Where only a single digit is required, this is preceded by either a zero or an asterisk, e.g. 01 or *1 **(M)**.

The number of seats/berths is followed by a blank **(M)**.

Indication: "SEAT/BERTH". This does not need to be translated when entered in row B **(M)**.

Column 72 Blank.

FIELD 3 Details of route travelled together with dates and times of departure and arrival.

Rows E/F Entry of non-variable data.

Column 1 Blank.

Columns 2 to 6 Details of date of departure, i.e. the indication: "DATE" or a suitable pictogram **(M)**.

European Railway Agency

ERA/TD/2009-09/INT: ANNEX B.6 of TAP TSI

Where the word "DATE" is printed, it is not translated, since it always appears in this box.

Column 7 Blank.

Columns 8 to 12 Details of time of departure, i.e. the indication: "TIME" or a suitable pictogram **(M)**.

Where the indication "TIME" is entered, it is not translated, since it always appears in this box.

Column 13 Blank.

Columns 14 to 30 Indication: "DEPARTURE" or "FROM", flush left **(M)**.

Columns 31 to 34 Arrow pointing from left to right. This arrow can be symbolised by successive "dash" (-) and "greater than" (>) characters or, for RUs unable to print an arrow, by a dash **(O)**.

Columns 35 to 51 Indication: "ARRIVAL" or "TO", flush left **(M)**.

Column 52 Blank.

Columns 53 to 57 Details of date of arrival, i.e. the indication "DATE" or a suitable pictogram **(M)**.

Same comments with regard to translation as for date of departure.

Column 58 Blank.

Columns 59 to 63 Details of time of arrival, i.e. the indication "TIME" or a suitable pictogram **(M)**.

Same comments with regard to translation as for time of departure.

Columns 64 to 66 Blank.

Row G Entry of variable data

Column 1 Blank.

Columns 2 to 6 Date of departure in the format DD/MM or DD.MM (DD = day, MM = month)

-

cf. element 21A of message Technical Document B.6 **(M)**.

Column 7 Blank.

Columns 8 to 12 Time of departure in the format hh.mm (h = hours, m = minutes) or hh:mm within the 24-hour system - cf. element 41A of message Technical Document B.6 **(M)**.

Column 13 Blank.

Columns 14 to 30 Name of departure station in 17 characters, flush left **(M)**.

Columns 31 to 34 Arrow pointing from left to right. This arrow can be symbolised by successive "dash" (-) and "greater than" (>) characters or, for RUs unable to print an arrow, by a dash **(M)**.

Columns 35 to 51 Name of arrival station in 17 characters, flush left **(M)**.

Column 52 Blank.

Columns 53 to 57 Date of arrival in the format DD/MM or DD.MM (DD = day, MM = month) - cf. element 21 H of message Technical Document B.6 **(C)**.

Column 58 Blank.

Columns 59 to 63 Time of arrival in the format hh.mm (h = hours, m = minutes) or hh:mm within the 24-hour system - cf. element 41H of message Technical Document B.6 **(C)**.

FIELD 4 **Details of class of travel. Field 4 is boxed off for added emphasis**

Rows E/F

Columns 67 to 71 Indication: "CLASS" **(M)**.

Column 72 Blank.

Row G

Columns 67 to 71 Detail of class, centred **(C)**.

If no class indication is sent by the allocating system, the positions are to be left blank or invalidated by an asterisk - cf. element 24 of message Technical Document B.6.

Column 72 Blank.

FIELDS 3 and 4

Row H

Column 1 Blank.

Columns 2 to 71 Invalidation of columns reserved for the return journey by means of an asterisk or the letter x, as shown in the specimen in point 2.2.3. These columns may, however, be used in traffic between partner RUs for customer service entries - cancellation of a ticket for subsequent refunding, for example.

Column 72 Blank.

FIELD 5

Details of train, coach and seats/berths reserved

Row I

Column 1 Blank.

Columns 2 to 6 Indication: "TRAIN" or a suitable pictogram, flush left **(M)**.

Column 7 Blank.

Columns 8 to 12 Train number, flush right **(M)**.

Column 13 Blank.

Columns 14 to 16 Train category, flush right - cf. element 48 of message Technical Document B.6 **(C)**.

Column 17 Blank.

Columns 18 to 25 Indication: "COACH", flush left **(M)**.

Column 26 Blank.

Columns 27 to 29 Coach number, flush right **(M)**.

Columns 30 to 32 Blank.

Columns 33 to 47 Indication: "SEAT", "COUCHETTE", "SLEEPING BERTH" or "BICYCLE", flush left **(M)**.

Column 48 Blank.

Columns 49 to 71 Numbering of seat(s)/berth(s) booked **(M)**.

Column 72 Blank.

Row J

Columns 1 to 32 Blank.

Columns 33 to 71 Numbering of seats/berths booked (see Row I) **(C)**.

Column 72 Blank.

Row K

Column 1 Blank.

Columns 2 to 31 Indication "SMOKING" or "NON SMOKING" plus the type of compartment booked - cf. element 51 of message Technical Document B.6 **(M)**.

Column 32 Blank.

Columns 33 to 71 Numbering of seats/berths booked (see Row I) **(C)** or indication: "UPPER", "MIDDLE", "LOWER", "WINDOW", "MIDDLE", "CORRIDOR" or "SOLO WINDOW" **(M)**.

In respect of the number of seats/berths booked, each RU has the choice of using a single or double-digit numeral (e.g. 1 WINDOW or 01 WINDOW).

Column 72 Blank.

Row L

Column 1 Blank.

Columns 2 to 31 Indication "SMOKING" or "NON SMOKING" plus the type of compartment booked - cf. element 51 of message Technical Document B.6 **(M)**.

Column 32 Blank.

Columns 33 to 71 Numbering of seats/berths booked (see Row I) **(C)** or indication: "UPPER", "MIDDLE", "LOWER", "WINDOW", "MIDDLE", "CORRIDOR" or "SOLO WINDOW" **(M)**.

In respect of the number of seats/berths booked, each RU has the choice of using a single or double-digit numeral (e.g. 1 WINDOW or 01 WINDOW).

Column 72 Blank.

FIELD 6 **Details of applicable tariff(s) and any special condition(s) of use**

Rows M/N/O

Column 1 Blank.

Columns 2 to 3 Number of passengers per tariff used **(M)**.

The number of passengers may be indicated using a single or double-digit numeral, e.g. 1 or 01, given that the full two-digit numeral is already entered in field 2.

Column 4 Blank.

Columns 5 to 51 Designation of tariff on which fare is based **(M)**.

+ 1 blank,

+ special comments relating to the tariff, e.g. "SUBJECT TO SPECIAL CONDITIONS" **(C)**.

Tariff designations can differ in length, while translation of special comments can also take up a greater or lesser amount of space; accordingly, the only definitive requirement is that a blank be left between the number of passengers and the tariff designation and between the tariff designation and any special comment.

Column 52 Blank.

Row M

Columns 53 to 72 Blank.

Row O

Column 1 Blank.

Columns 2 to 51 Where a train is subject to supplement and the supplement has been charged for, "SUPPLEMENT INCLUDED" is entered here.

FIELD 7 **Details of purchase currency and ticket price**

The general terms and conditions apply (see point 2.1 .7).

2.4.2 - Administrative details

FIELD 8 The general terms and conditions apply (see points 2.1.8 or 2.1.9).
The details required are printed.

2.4.3 - Specimen RCT2 "RESERVATION" document

Point A.4 - Specimen No. 9.

2.5 - Supplement

2.5.1 - Description

This is a SUPPLEMENT that does not entail a reservation.
Where a SUPPLEMENT is to be issued in conjunction with a reservation, an RCT2 "RESERVATION" document is issued.

One SUPPLEMENT is issued per journey. There are three possible types:

- supplement issued for a set route, date, time and train (Type 1 supplement);
- supplement issued for a specific type of train, e.g. ICE, but without detailing either the date and time of departure or the route. This is an "open" supplement, valid for 2 months, for a specific type of train (Type 2 supplement);
- supplement issued under the same conditions as above, but for a specific route (Type 3 supplement).

2.5.2 - Type 1 Supplement

2.5.2.1 - Commercial information

FIELD 1

Row A

Column 1 Blank.

RCT2 classic

Columns 2 to 14 Acronym or logo of the RU responsible for issuing the RCT2 document **(M)**.

RCT2 compressed standard

Columns b to n, or 2 to 14 Acronym or logo of the RU responsible for issuing the RCT2 document **(M)**.

Columns 15 to 18 Blank.

Columns 19 to 51 RCT2 title "SUPPLEMENT", flush left **(M) (T)**.

Column 52 Blank. For RUs operating with a tear-off feature at column 52, this position corresponds to the perforation.

Row B

Column 1 Blank.

RCT2 classic

Columns 2 to 14 Acronym or logo of the RU responsible for issuing the RCT2 document (cont. from row A, otherwise blank) **(C)**.

RCT2 compressed standard

Columns b to n, or 2 to 14 Acronym or logo of the RU responsible for issuing the RCT2 document (cont. from row A, otherwise blank) **(C)**.

Columns 15 to 18 Blank (not to be used).

Columns 19 to 51 RCT2 title (cont. from row A) for RUs required to enter this in a second language **(C)**.

Column 52 Blank. For RUs operating with a tear-off feature at column 52, this position corresponds to the perforation.

Row C

Column 1 Blank.

Columns 2 to 4 "CIV" acronym where a ticket is issued for a journey through two or more countries **(C)**.

Envisaged as **(C)** despite not being necessary for reservations so as to save RUs with pre-printed documents or templates unnecessary printouts.

Column 5 Blank.

Columns 6 to 9 code of the issuing RU, flush right **(M)**.

Column 10 Blank.

Columns 11 to 12 Abbreviation "AG", or equivalent, for tickets issued by travel agencies **(C)**.

Columns 13 to 52 Blank.

Row D

Columns 1 to 72 Blank.

FIELD 2 Information detailing passenger's full name plus number of adults and children

Same details as for the RCT2 "TICKET".

FIELD 3 Details of departure and arrival stations together with dates and times of departure and arrival

Rows E and F Entry of non-variable data
Same details as for the RCT2 "RESERVATION" document.

Row G Entry of variable data regarding date/time of train's departure and departure/arrival stations involved

Same details as for the RCT2 "RESERVATION" document.

Row H

Columns 1 to 72 Same details as for the RCT2 "RESERVATION" document.

FIELD 4 Same details as for the RCT2 "RESERVATION" document.

FIELD 5 **Details of train reserved**

Row I

Column 1 Blank.

Columns 2 to 6 Indication: "TRAIN" or a suitable pictogram, flush left **(M)**.

Column 7 Blank.

Columns 8 to 12 Train number, flush right **(M)**.

Column 13 Blank.

Columns 14 to 16 Train category, flush right **(M)**.

Columns 17 to 72 Blank.

Rows J/K/L

Columns 1 to 72 Blank.

FIELD 6 **Details of applicable tariff(s) and any special condition(s) of use**

Same information as for the RCT2 "TICKET"

This information is only to be entered if the tariff(s) involved has (have) an effect on how the supplement price is calculated.

FIELD 7 **Details of purchase currency and price per travel document.**

The general terms and conditions apply (see point 2.1.7).

2.5.2.2 - Administrative details

FIELD 8 The general terms and conditions apply (see points 2.1.8 or 2.1.9).

The details required are printed.

2.5.2.3 - Specimen RCT2 Type 1 "SUPPLEMENT"

Point A.5.1 - Specimen No. 10.

2.5.3 - Type 2 Supplement

NB : this RCT2 document can only be used in international services by those RUs whose systems allow receipts from supplements to be distributed as agreed between participating RUs.

2.5.3.1 - Commercial information

Differs in the following respects from point 2.5.2:

FIELD 1

Row D

Column 1 Blank.

Columns 2 to 51 Details of supplement's validity in the format:

"VALID (FROM!:) DD!MM!YYYY (TO!-) DD!MM!YYYY" or "VALID (FROM!:) DD.MM.YYYY (TO!-) DD.MM.YYYY" (DD = day, MM = month, YYYY = year) **(M)**.

RUs that cannot print the year in 4 numerals may continue to operate with 2.

FIELD 3 Details of departure and arrival stations together with dates and times of departure and arrival

Invalidate with an asterisk columns reserved for details of departure and arrival stations and dates and times of departure and arrival.

To save RUs operating with pre-printed documents or templates unnecessary printouts, the pre-printed data in rows E and F may be retained. The corresponding areas in rows G and H need to be invalidated with an asterisk.

FIELD 5 Details of supplement's validity

Rows I/J/K/L

Column 1 Blank.

Columns 2 to 71 Details as per agreement between participating RUs **(M)**.

Column 72 Blank.

FIELD 6 Details of supplement's validity

Rows M/N/O

Column 1 Blank.

Columns 2 to 51 Details as per agreement between participating RUs **(M)**.

Column 52 Blank.

FIELD 7 Details of purchase currency and price per ticket

The general terms and conditions apply (see point 2.1 .7).

2.5.3.2 - Administrative details

FIELD 8 The general terms and conditions apply (see points 2.1.8 or 2.1.9).
The details required are printed.

2.5.3.3 - Specimen RCT2 Type 2 "SUPPLEMENT"

Point A.5.2 - Specimen No. 11.

2.5.4 - Type 3 Supplement

Differs in the following respect from point 2.5.2:

2.5.4.1 - Commercial information

FIELD 3

Row G

Columns 14 to 30 Name of departure station in 17 characters, flush left **(M)**.

Columns 31 to 34 Arrow pointing from left to right. This arrow can be symbolised by successive "dash" (-) and "greater than" (>) characters or, for RUs unable to print an arrow, by a dash.

Columns 35 to 51 Name of arrival station in 17 characters, flush left.

Column 52 Blank.

FIELD 5 Details of route for TICKET

Rows I/J/K/L

Column 1 Blank.

Columns 2 to 71 Indication: "VIA", flush left
+ names of intermediate stations.

Column 72 Blank.

2.5.4.2 - Administrative details

FIELD 8 The general terms and conditions apply (see points 2.1.8 or 2.1.9).
The details required are printed.

2.5.4.3 - Specimen RCT2 Type 3 "SUPPLEMENT"

Point A.5.3 - Specimen No. 12.

2.6 - Upgrade

Description: one RCT2 "UPGRADE" document (change to higher class) issued per applicable route.

NB : this RCT2 document can only be used in international services by those RUs whose systems allow receipts to be distributed.

2.6.1 - Commercial information

FIELD 1

Row A

Column 1 Blank.

RCT2 classic

Columns 2 to 14 Acronym or logo of the RU responsible for issuing the RCT2 document **(M)**.

RCT2 compressed standard

Columns b to n, or 2 to 14 Acronym or logo of the RU responsible for issuing the RCT2 document **(M)**.

Columns 15 to 18 Blank.

Columns 19 to 51 RCT2 title "UPGRADE", flush left **(M) (T)**.

Column 52 Blank. For RUs operating with a tear-off feature at column 52, this position corresponds to the perforation.

Row B

Column 1 Blank.

RCT2 classic

Columns 2 to 14 Acronym or logo of the RU responsible for issuing the RCT2 document (cont. from row A, otherwise blank) **(C)**.

RCT2 compressed standard

Columns b to n, or 2 to 14 Acronym or logo of the RU responsible for issuing the RCT2 document (cont. from row A, otherwise blank) **(C)**.

Columns 15 to 18 Blank (not to be used).

Columns 19 to 51 Ticket title (cont. from row A) for RUs required to enter this in a second language **(C)**.

Column 52 Blank. For RUs operating with a tear-off feature at column 52, this position corresponds to the perforation.

Row C

Column 1 Blank.

Columns 2 to 4 "CIV" acronym where a ticket is issued for a journey through two or more countries **(M)**.

Column 5 Blank.

Columns 6 to 9 code of the issuing RU, flush right **(M)**

Column 10 Blank.

Columns 11 to 12 Abbreviation "AG", or equivalent, for tickets issued by travel agencies **(C)**.

Columns 13 to 52 Blank.

Row D Details of original ticket presented
(straightforward RCT2 travel ticket)
Column 1 Blank.
Columns 2 to 51 Indication: "CONCERNS TICKET NO. ... " **(M)**,
followed by the stock number or the system-generated issue number.
Columns 52 to 72 Blank.

FIELD 2 Same information as for RCT2 "TICKET".

FIELD 3 Same information as for RCT2 "TICKET".

FIELD 4 Same information as for RCT2 "TICKET".
The class involved is that to which the upgrade relates.

FIELD 5 Same information as for RCT2 "TICKET".
The itinerary involved is that to which the upgrade relates.

FIELD 6 **Details of applicable tariff(s)**
Same information as for the RCT2 "TICKET".
If the tariff applied affects the price of the upgrade, same tariff designation to be entered as that printed on the original ticket presented.
"FULL TARIFF" to be entered if the ticket is upgraded to full tariff.

FIELD 7 **Details of purchase currency and price per ticket**
The general terms and conditions apply (see 2.1 .7).
The ticket price to be entered shall be the difference in price between the original and the new contract.

2.6.2 - Administrative details

FIELD 8 The general terms and conditions apply (see points 2.1.8 or 2.1.9).
The details required are printed.

2.6.3 - Specimen RCT2 "UPGRADE" document

Point A.6 - Specimen No. 13.

2.7 - Change of itinerary

Description: one RCT2 "CHANGE OF ITINERARY" document issued per applicable route.

NB : this RCT2 document can only be used in international services by those RUs whose systems allow receipts to be distributed.

2.7.1 - Commercial information

As for the RCT2 "UPGRADE" document (change to higher class) with the following differences:

FIELD 1 Row A

Columns 19-51 RCT2 title "CHANGE OF ITINERARY", flush left **(M) (T)**.

FIELD 7 **Details of purchase currency and price per ticket**

The general terms and conditions apply (see 2.1 .7).

The amount to be entered necessarily constitutes the difference between the prices charged in the first and in the new contract.

2.7.2 - Administrative details

FIELD 8 The general terms and conditions apply (see points 2.1.8 or 2.1.9).

The details required are printed.

2.7.3 - Specimen RCT2 "CHANGE OF ITINERARY" document

Point A.7 - Specimen No. 14.

2.8 - Boarding pass

CARTE D'ACCES in French, EINSTEIGEKARTE in German, CARTA D'ACCESSO in Italian.

Description: A reservation document is issued to a customer already holding an RCT2 "TRAVEL + RESERVATION" document. One "BOARDING PASS" per passenger and segment exchanged is issued.

The operation involved is a change of reservation in respect of an "all-in" ticket for the same end-to-end journey (change of train/date of travel) at no cost to the customer. The tariff terms for the new journey must be identical to those for the original journey.

The tariff, class of service and passenger type remain unaltered. The tariff needs to allow exchange at no cost.

Advantages: No additional booking transaction: the customer retains the original ticket and receives a boarding pass containing details of new reservation.

The "BOARDING PASS" is unpriced.

Comments: This RCT2 document relates exclusively to "Travel + Reservation" products and its issue is dependent on the respective carrier's decision.

The sole object of this RCT2 document is to assign a new reservation. It does not in any sense constitute an authority to travel.

2.8.1 - Commercial information

The information to be entered is identical to that for the RCT2 "RESERVATION" document with the following differences:

FIELD 1

Row A

Columns 19 to 51 Name of document: "BOARDING PASS" **(M) (T)**.

FIELD 2 No information entered in the case of pre-printed RCT2 documents. In the case of RCT2 blank-to-blank documents on which all details are entered by a printer, this field is not printed.

FIELD 6 Rows M/N/O

Columns 2 to 51 Indication: "THIS CARD IS NOT A TICKET. IT SHOULD BE USED IN CONJUNCTION WITH THE ORIGINAL TICKET" **(M) (T)**.

FIELD 7 In the case of a pre-printed RCT2 document, the "PRICE" box is to be invalidated by means of asterisks to ensure the word "PRICE" is not visible to the customer.

In the case of an RCT2 blank-to-blank document, the "PRICE" box is to be left blank.

NB : the original ticket is to be amended in field 6, row O, column 2 onwards, in the following manner: "BOARDING PASS ISSUED" **(M)**.

2.8.2 - Administrative details

FIELD 8 As this RCT2 document is unpriced, it contains no information relating to VAT.

2.8.3 - Specimen RCT2 "BOARDING PASS" ticket

Point A.8 - Specimen No. 15.

2.9 - Special fares in conjunction with national railcards

Example: "RAIL+PLUS" card.

2.9.1 - Commercial information

FIELD 1

Row A

Column 1 Blank.

RCT2 classic

Columns 2 to 14 Acronym or logo of the RU responsible for issuing the RCT2 document **(M)**.

RCT2 compressed standard

Columns b to n, or 2 to 14 Acronym or logo of the RU responsible for issuing the RCT2 document **(M)**.

Columns 15 to 18 Blank.

Columns 19 to 37 RCT2 title, e.g. "RAIL+PLUS CARD", "RAIL EUROP SENIOR", etc., flush left **(O, T)**.

Column 38 Blank.

Columns 39 to 51 Indication: "FULL NAME", flush left **(O)**.

Column 52 Blank. For RUs operating with a tear-off feature at column 52, this position corresponds to the perforation.

Row B

Column 1 Blank.

RCT2 classic

Columns 2 to 14 Acronym or logo of the RU responsible for issuing the RCT2 document (cont. from row A, otherwise blank) **(C)**.

RCT2 compressed standard

Columns b to n, or 2 to 14 Acronym or logo of the RU responsible for issuing the RCT2 document (cont. from row A, otherwise blank) **(C)**.

Columns 15 to 18 Blank (not to be used).

Columns 19 to 37 RCT2 title (cont. from row A) for RUs required to enter this in a second language **(C)**.

Column 38 Blank.

Columns 39 to 51 Indication: "COUNTRY", flush left **(O)**.

Column 52 Blank. For RUs operating with a tear-off feature at column 52, this position corresponds to the perforation.

Row C

Column 1 Blank.

Columns 2 to 4 "CIV" acronym **(M)**.

Column 5 Blank.

Columns 6 to 9 code of the issuing RU, flush right **(M)**.

Column 10 Blank.

Columns 11 to 12 Abbreviation "AG", or equivalent, for tickets issued by travel agencies **(C)**.

Columns 13 to 38 Blank.

Columns 39 to 51 Designation of national railcard, flush left **(O)**.

Column 52 Blank.

Row D

Column 1 Blank.

Columns 2 to 51 Details of validity of ticket, e.g.:

"VALID (FROM!:) DD!MM!YYYY (TO!-) DD!MM!YYYY" or "VALID (FROM!:) DD.MM.YYYY (TO!-) DD.MM.YYYY" (DD = day, MM = month and YY or YYYY = year) **(M)**.

RUs that cannot represent the year with four numerals may continue to use two.

Column 52 Blank.

FIELD 2 Information detailing passenger's full name, the country issuing the national railcard and the number of the national railcard

Row A

Columns 53 to 71 Passenger's full name, flush left **(M)**.

Some RUs print the given name before the family name. This is a matter for the issuing RU to decide. However, where the entry is too long, it is the given name that must be truncated so that the family name can be entered in full.

Column 72 Blank.

European Railway Agency

ERA/TD/2009-09/INT: ANNEX B.6 of TAP TSI

Row B

Columns 53 to 71 Country issuing national railcard **(M)**.
Column 72 Blank.

Row C

Columns 53 to 71 Number of national railcard **(M)**.
Column 72 Blank.

FIELD 3

Rows E/F Entry of non-variable data
Columns 1 to 64 Blank (no entries made).

To save RUs operating with pre-printed documents or templates unnecessary printouts, the pre-printed data in rows E and F may be retained.

Row G/H

Entry of variable data
Columns 1 to 51 Blank. With relevant areas invalidated with an asterisk **(M)**.

FIELD 4

Details of class of travel. Field 4 is boxed off for added emphasis

Rows E/F

Columns 65 to 66 Blank.
Columns 67 to 71 Indication: "CLASS" **(M)**.
Column 72 Blank.

Row G

Columns 67 to 71 Where class is designated: details of class, centred **(M)**.
Where class is not designated: blank, with relevant area invalidated with asterisks **(M)**.
Column 72 Blank.

FIELD 5

Details of document's validity

Rows I/J/K/L

Column 1 Blank.
Columns 2 to 71 Details of terms and conditions of issue.
Column 72 Blank.

FIELD 6

Details of applicable tariff and any special condition(s) of use

Rows M/N/O

Column 1 Blank.
Columns 2 to 51 Terms and conditions of issue (Cont.) **(M)**.

FIELD 7

Details of purchase currency and amount entered on ticket.

Same information as for RCT2 "TICKET" **(M)**.

2.9.2 - Administrative details

FIELD 8 Same information as for RCT2 "TICKET" (M).

2.9.3 - Specimen RCT2 "Special fares in conjunction with national railcards"

Point A.9 - Specimen No. 16.

2.11 - Group ticket

There are two versions:

Version 1: Group ticket plus complementary coupon and countermark

Version 2: Group ticket and complementary coupon combined plus countermark

Description: Separate issue of ticket (and in the case of version 1 of the complementary coupon), countermarks and reservation document. It is accordingly planned to issue in addition to the "Reservation" document:

Version 1 : - a "group ticket",

- a "complementary coupon for group ticket No. :",

- a "countermark for group ticket No. :". Version 2 : - a "group ticket",

- a "countermark for group ticket No. :".

2.11.1 - Group ticket with complementary coupon and countermark - Version 1

Description:

- This is effectively the contract of carriage. It is retained by the head of the group.

2.11.1.1 - Commercial information

FIELD 1

Row A

Column 1 Blank.

RCT2 classic

Columns 2 to 14 Acronym or logo of the RU responsible for issuing the RCT2 document (M).

RCT2 compressed standard

Columns b to n, or 2 to 14 Acronym or logo of the RU responsible for issuing the RCT2 document (M).

European Railway Agency

ERA/TD/2009-09/INT: ANNEX B.6 of TAP TSI

Columns 15 to 18 Blank.

Columns 19 to 39 Indication: "GROUP TICKET", flush left **(M) (T)**.

Columns 40 to 51 Indication: "HEAD OF GROUP", flush left **(O)**.

Column 52 Blank. For RUs operating with a tear-off feature at column 52, this position corresponds to the perforation.

Row B

Column 1 Blank.

RCT2 classic

Columns 2 to 14 Acronym or logo of the RU responsible for issuing the RCT2 document (cont. from row A, otherwise blank) **(C)**.

RCT2 compressed standard

Columns b to n, or 2 to 14 Acronym or logo of the RU responsible for issuing the RCT2 document (cont. from row A, otherwise blank) **(C)**.

Columns 15 to 18 Blank (not be used).

Columns 19 to 39 Ticket title (cont. from row A) for RUs required to enter this in a second language **(C)**.

Columns 40 to 51 Indication: "GROUP NAME", flush left **(O)**.

Column 52 Blank.

Row C

Column 1 Blank.

Columns 2 to 4 "CIV" acronym where a ticket is issued for a journey through 2 or more countries **(M)**.

Column 5 Blank.

Columns 6 to 9 code of the issuing RU, flush right **(M)**.

Column 10 Blank.

Columns 11 to 12 Abbreviation "AG", or equivalent, for tickets issued by travel agencies **(C)**.

Columns 13 to 39 Blank.

Columns 40 to 51 Indication: "GROUP MEMBERS" or "TOTAL", flush left **(O)**.

Column 52 Blank.

Row D

Column 1 Blank.

Columns 2 to 51 Details of ticket's validity in the format:

"VALID (FROM!:) DD!MM!YYYY (TO!-) DD!MM!YYYY" or "VALID (FROM!:) DD.MM.YYYY (TO!-) DD.MM.YYYY" (DD = day, MM = month and YY or YYYY = year) **(M)**.

RUs that cannot print the year in 4 numerals may continue to use 2.

Column 52 to 72 Blank.

FIELD 2

Nota : Rows A/B can be reversed if no other technical solution is feasible. **Row A**

Columns 53 to 71 Head of group's full name **(C)**.

Some RUs print the given name before the family name. This is a matter for the issuing RU to decide. Where the entry is too long, however, it is the given name that must be truncated so that the family name can be entered in full.

Column 72 Blank.

Row B

Columns 53 to 71 Name of the group **(M)**.

Column 72 Blank.

Row C

Columns 53 to 71 Total number of passengers, including any bonus passenger(s), i.e. passengers allowed to travel for free, using three numerals. Where only two characters are required the number is preceded by a zero or an asterisk, e.g. 098 or *98 **(M)**.

Column 72 Blank.

FIELD 3 **Details of departure and arrival stations together with dates and times of departure and arrival**

Rows E/F Entry of non-variable data

Rows G/H Entry of variable data for the outward journey

Same information as for the RCT2 "TICKET".

FIELD 4

Rows E/F/G/H Same information as for the RCT2 "TICKET".

FIELD 5 **Details of itinerary on ticket and carrier(s)**

Rows I/J/K/L Same information as for the RCT2 "TICKET".

FIELD 6 **Details of applicable tariff(s) and any special condition(s) of use**

Rows M/N/O

Column 1 Blank.

Columns 2 to 4 Number of passengers per tariff used **(M)**.

Where an "individual" tariff applies to a group in which all members are accorded the same concessionary rate, the number of passengers can be indicated using one, two or three numerals, e.g. 9, 09 or 009, given that the full three-digit numeral, e.g. 009, is already entered in field 2.

Where a "group" tariff applies, details of the group category only are entered.

Column 5 Blank.

Columns 6 to 51 Tariff designation **(M)**,

+ 1 blank,

+ special comment relating to the tariff **(C)**.

For tariff classification of a single-status group, one of the following is entered as applicable:

– "GROUP 6 TO 24",

– "GROUP 25 AND OVER",

– "YOUTH GROUP",

– other types of group depending on the service involved.

For tariff classification of a "mixed" group, one of the following is entered as applicable:

– "GROUP 6 TO 24/YOUTH",

– "GROUP 25 AND OVER/YOUTH", *Column 52* Blank.

Row M

Columns 53 to 72 Blank.

FIELD 7 Details of purchase currency and price per ticket.

The general terms and conditions apply (see point 2.1 .7).

2.11.1.2 - Administrative details

FIELD 8 The General Terms and Conditions apply (see points 2.1.8 or 2.1.9).

The details required are printed.

2.11.2 - Complementary coupon

Description: This coupon gives precise details of the composition of the group. It is not a ticket. The coupon is stapled to the "group ticket" and must be retained by the head of the group.

When a group ticket is issued under the terms of an individual tariff, no complementary coupon is issued.

2.11.2.1 - Commercial information

FIELD 1

Row A

Column 1 Blank.

RCT2 classic

Columns 2 to 14 Acronym or logo of the RU responsible for issuing the RCT2 document **(M)**.

RCT2 compressed standard

Columns *b to n,* Acronym or logo of the RU responsible for issuing the RCT2 document **(M)**.
or 2 to 14

Columns 15 to 18 Blank.

European Railway Agency

ERA/TD/2009-09/INT: ANNEX B.6 of TAP TSI

Columns 19 to 39 RCT2 title "COMPLEMENTARY COUPON", flush left **(M) (T)**.
Columns 40 to 51 Indication: "HEAD OF GROUP", flush left **(O)**.
Column 52 Blank. For RUs operating with a tear-off feature at column 52, this position corresponds to the perforation.

Row B

Column 1 Blank.

RCT2 classic

Columns 2 to 14 Acronym or logo of the RU responsible for issuing the RCT2 document (cont. from row A, otherwise blank) **(C)**.

RCT2 compressed standard

Columns b to n, or 2 to 14 Acronym or logo of the RU responsible for issuing the RCT2 document (cont. from row A, otherwise blank) **(C)**.

Columns 15 to 19 Blank (not be to used).

Columns 20 to 39 Ticket title (cont. from row A) for RUs required to enter this in a second language **(C)**.

Columns 40 to 51 Indication: "NAME OF GROUP", flush left **(O)**.

Column 52 Blank.

Row C

Columns 1 to 52 Blank.

Row D

Column 1 Blank.

Columns 2 to 51 Indication: "VALID ONLY IN CONJUNCTION WITH GROUP TICKET No. ..." followed by the stock number or the system-generated electronic issue number **(M)**

Columns 52 to 72 Blank.

FIELD 2

Row A

Columns 53 to 71 Full name of head of group **(C)**.

Some RUs print the given name before the family name. This is a matter for the issuing RU to decide. However, where the entry is too long, it is the given name that must be truncated so that the family name can be entered in full.

Column 72 Blank.

Row B

Columns 53 to 71 Name of group **(M)**.

Column 72 Blank.

Row C

Columns 1 to 52 Blank.

Columns 53 to 71 Total number of passengers, including bonus passengers, using three numerals. Where only two characters are required the number is preceded by a zero or an asterisk, e.g. 098 or *98 **(M)**.

Column 72 Blank.

FIELD 3 **Details of departure and arrival stations together with dates and times of departure and arrival**

Rows E/F/G/H Same information as for the RCT2 "group ticket".

FIELD 4

Rows E/F/G/H Same information as for the RCT2 "group ticket".

FIELD 5 **Details of composition of group**

Rows I/J/K/L

Columns 2 to 71 Classification of data, showing the number of passengers per category, the title of the corresponding passenger category and the unit price per passenger. The sum in the national currency (3-digit ISO code) is to be displayed for bonus passenger(s) e.g. EUR 0000,00. Each row filled is referred to as a segment. It is possible to print 8 data segments in field 5.

Where more than 8 segments are involved, an additional complementary coupon will be required.

If several passenger categories are involved, they are listed in the following order:

- "ADULTS",
- "ADOLESCENTS",
- "CHILDREN" + age bracket 1,
- "CHILDREN" + age bracket 2,
- "CHILDREN" + age bracket N,
- "COURIERS",
- "BONUS PASSENGERS".

This list is not exhaustive, since some services may have further passenger classifications.

Column 72 Blank.

FIELD 6 **Details of applicable tariff(s) and any special condition(s) of use**

Rows M/N/O Same information as for the RCT2 "group ticket".

FIELD 7 **Details of purchase currency and ticket price**

Pre-printed RCT2 document

Row N Details of price in the national currency.

Columns 53 to 71 Indication "PRICE", pre-printed
+ invalidation of relevant columns with asterisks (**M**).

Row O

Columns 53 to 71 Details of price in the single European currency.
Invalidation with asterisks of columns earmarked for amount **(M)**.

Blank RCT2 document (blank-to-blank ticket).

Rows N/O

Columns 53 to 71 Do not print field 7.

2.11.2.2 - Administrative details

FIELD 8 The general terms and conditions apply (see points 2.1.8 or 2.1.9).
The details required are printed.

2.11.3 - Countermark

Description: One countermark is distributed to each group member except the head of the group, who retains the "group ticket".

It is an unpriced RCT2 document and contains no details of the route.

NB : It is recommended to issue countermarks later on, since clients often need to alter the number of passengers prior to departure. In such instances, the sales terminal is used in the same way as a typewriter. The issuing RU may adopt alternative technical solutions.

2.11.3.1 - Commercial information FIELD 1

Row A

Column 1 Blank.

RCT2 classic

Columns 2 to 14 Acronym or logo of the RU responsible for issuing the RCT2 document **(M)**.

RCT2 compressed standard

Columns b to n, or 2 to 14 Acronym or logo of the RU responsible for issuing the RCT2 document **(M)**.

Columns 15 to 18 Blank.

Columns 19 to 39 Ticket title "COUNTERMARK", flush left **(O, T)**.

Columns 40 to 51 Indication: "HEAD OF GROUP", flush left **(O)**.

Column 52 Blank.

Row B

Column 1 Blank.

RCT2 classic

Columns 2 to 14 Acronym or logo of the RU responsible for issuing the RCT2 document (cont. from row A, otherwise blank) **(C)**.

European Railway Agency

ERA/TD/2009-09/INT: ANNEX B.6 of TAP TSI

RCT2 compressed standard

<i>Columns b to n, or 2 to 14</i>	Acronym or logo of the RU responsible for issuing the RCT2 document (cont. from row A, otherwise blank) (C) .
<i>Columns 15 to 18</i>	Blank (not to be used).
<i>Columns 19 to 39</i>	Ticket title (cont. from row A) for RUs required to enter this in a second language (C) .
<i>Columns 40 to 51</i>	Indication: "GROUP NAME:", flush left (O) .
<i>Column 52</i>	Blank.
Row C	
<i>Column 1</i>	Blank.
<i>Columns 2 to 4</i>	"CIV" acronym where a ticket is issued for a journey through two or more countries (M) .
<i>Column 5</i>	Blank.
<i>Columns 6 to 9</i>	code of the issuing RU, flush right (M) .
<i>Columns 10 to 52</i>	Blank.
Row D	
<i>Column 1</i>	Blank.
<i>Columns 2 to 51</i>	Indication: "VALID ONLY IN CONJUNCTION WITH GROUP TICKET No." (M) followed by the stock number or a system-generated electronic issue number.
<i>Columns 52 to 72</i>	Blank.

FIELD 2 Full name of head of group plus name of group

Row A

Columns 53 to 71 Full name of head of group **(C)**.
Some RUs print the given name before the family name. This is a matter for the issuing RU to decide. However, where the entry is too long, it is the given name that must be truncated so that the family name can be entered in full.

Column 72 Blank.

Row B

Columns 53 to 71 Name of group **(M)**.

Column 72 Blank.

Row C

Columns 53 to 72 Blank - no details of overall number of travellers **(M)**.

FIELD 3 Details of departure and arrival stations together with dates and times of departure and arrival.

Rows E/F Same information as for the RCT2 "TICKET".

Rows G/H Same information as for the RCT2 "SUPPLEMENT 2" (all details to be indicated with an asterisk).

European Railway Agency

ERA/TD/2009-09/INT: ANNEX B.6 of TAP TSI

FIELD 4 Rows E/F

Columns 67 to 71 Indication: "CLASS" **(M)**.
Column 72 Blank.

Row G

Columns 67 to 71 Details of class, centred **(M)**.
Column 72 Blank.

FIELD 5

Rows I/J/K/L

Columns 1 to 72 Blank.

FIELD 6

Details of applicable tariff(s) and any special condition(s) of use

Rows M/N/O

Columns 1 to 52 Blank.

FIELD 7

Details of purchase currency and ticket price

Pre-printed RCT2 document

Row N

Details of price in the national currency.
Columns 53 to 71 Indication "PRICE", pre-printed.
+ invalidation of relevant columns with asterisks **(M)**.

Row O

Columns 53 to 71 Details of price in the single European currency.
Invalidation with asterisks of columns earmarked for amount **(M)**.

Blank RCT2 document (blank-to-blank ticket).

Rows N/O

Columns 53 to 71 Field 7 not to be printed.

2.11.3.2 - Administrative details

FIELD 8 The general terms and conditions apply (see points 2.1.8 or 2.1.9).

The details required are printed.

Countermarks are not numerically interlinked.

NB : the same information must feature on the "RESERVATION" document as on its equivalent for individual passengers. 3-digits are to be used for the passenger total however.

2.11.4 - Specimens GROUP travel documents (Version 1)

2.11.4.1 - Specimen RCT2 "GROUP TICKET"

Point A.11.1 - Specimen No. 17.

2.11.4.2 - Specimen RCT2 "COMPLEMENTARY COUPON"

Point A.11.1.2 - Specimen No. 18.

2.11.4.3 - Specimen RCT2 "COUNTERMARK"

Point A.11.1.3 - Specimen No. 19.

2.11.5 - Group ticket - Version 2

2.11.5.1 - Commercial information

FIELD 1

Row A

Column 1 Blank.

RCT2 classic

Columns 2 to 14 Acronym or logo of the RU responsible for issuing the RCT2 document **(M)**.

RCT2 compressed standard

Columns b to n, or 2 to 14 Acronym or logo of the RU responsible for issuing the RCT2 document **(M)**.

Columns 15 to 18 Blank.

Columns 19 to 39 Indication: "GROUP TICKET", flush left **(M) (T)**.

Columns 40 to 51 Indication: "HEAD OF GROUP", flush left **(O)**.

Column 52 Blank. For RUs operating with a tear-off feature at column 52, this position corresponds to the perforation.

Row B

Column 1 Blank.

RCT2 classic

Columns 2 to 14 Acronym or logo of the RU responsible for issuing the RCT2 document (cont. from row A, otherwise blank) **(C)**.

RCT2 compressed standard

Columns b to n, or 2 to 14 Acronym or logo of the RU responsible for issuing the RCT2 document (cont. from row A, otherwise blank) **(C)**.

Columns 15 to 18 Blank (not to be used).

Columns 19 to 39 Ticket title (cont. from row A) for RUs required to enter this in a second language **(C)**.

Columns 40 to 51 Indication: "GROUP NAME", flush left **(O)**.

Column 52 Blank.

Row C

Column 1 Blank.

Columns 2 to 4 "CIV" acronym where a ticket is issued for a journey through 2 or more countries **(M)**.

Column 5 Blank.

Columns 6 to 9 code of the issuing RU, flush right **(M)**.

Column 10 Blank.

Columns 11 to 12 Abbreviation "AG", or equivalent, for tickets issued by travel agencies **(C)**.

Columns 13 to 39 Blank.

Columns 40 to 51 Indication: "GROUP MEMBERS" or "TOTAL", flush left **(O)**.

Column 52 Blank.

Row D

Column 1 Blank.

Columns 2 to 51 Details of ticket's validity in the format: "VALID (FROM/;) DD/MM/YYYY (TO/-) DD/MM/YYYY" or "VALID (FROM/;) DD.MM.YYYY (TO/-) DD.MM.YYYY" (DD = day, MM = month and YY or YYYY = year) **(M)**.

RUs which cannot print the year in 4 numerals may continue to use 2.

Columns 52 to 72 Blank.

FIELD 2

NB : Rows A/B can be reversed if no other technical solution is feasible. **Row A**

Columns 53 to 71 Head of group's full name **(C)**.

Some RUs print the given name before the family name. This is a matter for the issuing RU to decide. Where the entry is too long, however, it is the given name that must be truncated so that the family name can be entered in full.

Column 72 Blank.

Row B

Columns 53 to 71 Name of group **(M)**.
Column 72 Blank.

Row C

Columns 53 to 71 Total number of passengers, including any bonus passengers, using three numerals. Where only two characters are required the number is preceded by a zero or an asterisk, e.g. 098 or *98 **(M)**.

Column 72 Blank.

FIELD 3 Details of departure and arrival stations together with dates and times of departure and arrival.

Rows E/F Entry of non-variable data
Rows G/H Entry of variable data for the outward journey
Same information as for the RCT2 "TICKET".

FIELD 4

Rows E/F/G/H Same information as for the RCT2 "TICKET".

FIELD 5 Details of itinerary on ticket

Rows I/J/K/L Same information as for the RCT2 "TICKET".

FIELD 6 Details of applicable tariff(s), any special condition(s) of use and the composition of the group

Row M

Column 1 Blank.
Columns 2 to 51 Number of passengers per tariff used **(M)**.

Where an "individual" tariff applies to a group accorded the same concessionary rate, the number of passengers can be indicated using one, two or three numerals, e.g. 9, 09 or 009, given that the full three-digit numeral, e.g. 009, is already entered in Field 2.

Where a "group" tariff applies, details of the group category only are entered.

+ 1 blank,
+ special comment relating to the tariff **(C)**.

For tariff classification of a single-status group, one of the following is entered as applicable:

- "GROUP 6 TO 24",
- "GROUP 25 AND OVER",
- "YOUTH GROUP",
- other types of group depending on the service involved.

For tariff classification of a "mixed" group, one of the following is entered as appble:

- "GROUP 6 TO 24/YOUTH",
- "GROUP 25 AND OVER/YOUTH".

Column 52 Blank.

Rows N/O

Column 1 Blank.

Columns 2 to 51 Classification of data, showing the number of passengers per category, the title of the corresponding passenger category and the unit price per passenger. The sum in the national currency (3-digit ISO code) is to be displayed for bonus passenger(s) e.g. EUR 0000,00. Each row filled is referred to as a segment. It is possible to print 4 data segments in field 6.

Where more than 4 segments are involved, an additional complementary coupon will be required.

If several passenger categories are involved, they are listed in the following order:

- "ADULTS",
- "ADOLESCENTS",
- "CHILDREN" + age bracket 1
- "CHILDREN" + age bracket 2
- "CHILDREN" + age bracket N,
- "COURIERS",
- "BONUS PASSENGERS".

This list is not exhaustive, since some services may have further passenger classifications.

Column 52 Blank.

FIELD 7 **Details of purchase currency and price per ticket**

The general terms and conditions apply (see point 2.1 .7).

2.11.5.2 - Administrative details

FIELD 8 The general terms and conditions apply (see points 2.1.8 or 2.1.9).

The details required are printed.

2.11.6 - Countermark

Description: One countermark is distributed to each group member except to the head of the group, who retains the "GROUP TICKET".

It is an unpriced RCT2 document and contains no details of the route.

NB : it is recommended to issue countermarks later on, since clients often need to alter the number of passengers prior to departure. In such instances, the sales terminal is used in the same way as a typewriter. The issuing RU may adopt alternative technical solutions.

2.11.6.1 - Commercial information

FIELD 1

Row A

Column 1 Blank.

RCT2 classic

Columns 2 to 14 Acronym or logo of the RU responsible for issuing the RCT2 document **(M)**.

RCT2 compressed standard

Columns b to n, or 2 to 14 Acronym or logo of the RU responsible for issuing the RCT2 document **(M)**.

Columns 15 to 18 Blank.

Columns 19 to 39 Ticket title "COUNTERMARK", flush left **(M) (T)**.

Columns 40 to 51 Indication: "HEAD OF GROUP", flush left **(O)**.

Column 52 Blank.

Row B

Column 1 Blank.

RCT2 classic

Columns 2 to 14 Acronym or logo of the RU responsible for issuing the RCT2 document (cont. from row A, otherwise blank) **(C)**.

RCT2 compressed standard

Columns b to n, or 2 to 14 Acronym or logo of the RU responsible for issuing the RCT2 document (cont. from row A, otherwise blank) **(C)**.

Columns 15 to 18 Blank (not to be used).

Columns 19 to 39 Ticket title (cont. from row A) for RUs required to enter this in a second language **(C)**.

Columns 40 to 51 Indication: "NAME OF GROUP:", flush left **(O)**.

Column 52 Blank.

Row C

Column 1 Blank.

Columns 2 to 4 "CIV" acronym where a ticket is issued for a journey through two or more countries **(M)**.

Column 5 Blank.

Columns 6 to 9 code of the issuing RU, flush right **(M)**.

Columns 10 to 52 Blank.

Row D

Column 1 Blank.

Columns 2 to 51 Indication: "VALID ONLY IN CONJUNCTION WITH GROUP TICKET No."
(M) followed by the stock number or a system-generated electronic issue number.

Columns 52 to 72 Blank.

FIELD 2 Full name of head of group plus name of group

Row A

Columns 53 to 71 Full name of head of group **(C)**.

Some RUs print the given name before the family name. This is a matter for the issuing RU to decide. However, where the entry is too long, it is the given name that must be truncated so that the family name can be entered in full.

Column 72 Blank.

Row B

Columns 53 to 71 Name of group **(M)**.

Column 72 Blank.

Row C

Columns 53 to 72 Blank. No details of overall number travelling **(M)**.

FIELD 3 Details of departure and arrival stations together with dates and times of departure and arrival

Rows E/F Same information as for the RCT2 "TICKET"

Rows G/H Same information as for the RCT2 "SUPPLEMENT 2" (all details to be indicated with an asterisk).

FIELD 4 Rows E/F

Columns 67 to 71 Indication: "CLASS" **(M)**.

Column 72 Blank.

Row G

Columns 67 to 71 Detail of class, centred **(M)**.

Column 72 Blank.

FIELD 5

Rows I/J/K/L

Columns 1 to 72 Blank.

FIELD 6 **Details of applicable tariff(s) and any special condition(s) of use**
Rows M/N/O
Columns 1 to 52 Blank.

FIELD 7 **Details of purchase currency and ticket price**

Pre-printed RCT2 document

Row N Details of price in the national currency.
Columns 53 to 71 Indication "PRICE" pre-printed
+ invalidation of relevant columns with asterisks **(M)**.

Row O

Columns 53 to 71 Details of price in the single European currency.
Invalidation with asterisks of columns earmarked for amount **(M)**.

Blank RCT2 document (blank-to-blank ticket).

Rows N/O

Columns 53 to 71 Field 7 not to be printed.

2.11.6.2 - Administrative details

FIELD 8 The General Terms and Conditions apply (see points 2.1.8 or 2.1.9).

The details required are printed.

Countermarks are not numerically interlinked.

NB : the same information must feature on the "RESERVATION" document as on its equivalent for individual passengers. 3 digits are to be used for the passenger total however.

2.11.7 - Specimens GROUP travel documents (Version 2)

2.11.7.1 - Specimen RCT2 "GROUP TICKET"

Point A.11.2.1 - Specimen No. 20.

2.11.7.2 - Specimen RCT2 "COUNTERMARK"

Point A.11.2.2 - Specimen No. 21.

2.11.7.3 - Specimen RCT2 "GROUP MEMBER CHECK"

Point A.11.2.3 - Specimen No. 22.

The issue of a group member check document is optional, however, if it is issued it must comply with the specimen.

2.12 - INTER RAIL

2.12.1 - Commercial information

FIELD 1

Row A

Column 1 Blank.

RCT2 classic

Columns 2 to 14 Acronym or logo of the RU responsible for issuing the RCT2 document **(M)**.

RCT2 compressed standard

Columns b to n, or 2 to 14 Acronym or logo of the RU responsible for issuing the RCT2 document **(M)**.

Columns 15 to 18 Blank.

Columns 19 to 27 RCT2 title "InterRail" (brand name) **(M)**.

Column 28 to 38 Blank.

Columns 39 to 48 Indication: "FULL NAME:" **(M)**

Column 49 to 52 Blank.

Row B

Column 1 Blank.

RCT2 classic

Columns 2 to 14 Acronym or logo of the RU responsible for issuing the RCT2 document (cont. from row A, otherwise blank) **(C)**.

RCT2 compressed standard

Columns b to n, or 2 to 14 Acronym or logo of the RU responsible for issuing the RCT2 document (cont. from row A, otherwise blank) **(C)**.

Columns 15 to 18 Blank.

Columns 19 to 36 If used as "COMPLIMENTARY PASS" the term "COMPLIMENTARY PASS" has to be filled in (refer also to the indications in field 7).

Column 37 to 38 Blank.

Columns 39 to 46 Indication: "COUNTRY:" **(M)**

Column 47 to 52 Blank.

Row C

Column 1 Blank.

Columns 2 to 4 "CIV" acronym **(M)**.

Column 5 Blank.

Columns 6 to 9 The Code of the issuing RU **(M)**.

Column 10 to 38 Blank.

Columns 39 to 50 Indication: "PASS/-ID-NR.:" **(M)**

Column 51 to 52 Blank.

Row D

<i>Column 1</i>	Blank.
<i>Columns 2 to 7</i>	Indication: "VALID:"
<i>Column 8 to 11</i>	Blank.
<i>Columns 12 to 33</i>	Indication of the travel document's validity, in the following format: "DD.MM.YYYY - DD.MM.YYYY" (M) .
<i>Columns 34 to 38</i>	Blank.
<i>Columns 39 to 52</i>	Indication: "DATE OF BIRTH:"
<i>Column 53 to 62</i>	Indication of the date of birth in the following format: "DD.MM.YYYY" (M) .
<i>Columns 63 to 72</i>	Blank.

FIELD 2 Information detailing passenger's full name, country of residence and pass/identity card number

Row A

<i>Columns 53 to 71</i>	Traveller's family name and given name, flush left. If these indications are too long, the given name should be abbreviated in order to print the family name in full.
<i>Column 72</i>	Blank.

Row B

<i>Columns 53 to 71</i>	Country of residence (M) .
<i>Column 72</i>	Blank.

Row C

<i>Columns 53 to 71</i>	Passport or Identity card number (M) .
<i>Column 72</i>	Blank.

FIELD 3

Rows E/F

<i>Columns 1 to 72</i>	Entry of non-variable data Blank. RUs operating with pre-printed documents or templates may retain data in Rows E and F.
------------------------	--

Row G

<i>Column 1</i>	Entry of variable data Blank.
<i>Columns 2 to 6</i>	Relevant area to be invalidated with asterisks (M) .
<i>Column 7</i>	Blank.
<i>Columns 8 to 12</i>	Relevant area to be invalidated with asterisks (M) .
<i>Column 13</i>	Blank.
<i>Columns 14 to 22</i>	The text: "InterRail" (Brand name) (M) .
<i>Columns 23 to 52</i>	Blank.

European Railway Agency

ERA/TD/2009-09/INT: ANNEX B.6 of TAP TSI

Row H

Column 1	Blank.
Columns 2 to 6	Relevant area to be invalidated with asterisks (M) .
Column 7	Blank.
Columns 8 to 12	Relevant area to be invalidated with asterisks (M) .
Column 13	Blank.
Columns 14 to 51	The name of the pass, e.g. "Global Pass" or "Norway Pass" (Brand name) (M) .

Rows G/H

Column 52	Blank.
Columns 53 to 57	Relevant area to be invalidated with asterisks (M) .
Column 58	Blank.
Columns 59 to 63	Relevant area to be invalidated with asterisks (M) .

FIELD4

Indication of class

Rows E

Columns 64 to 66	Blank.
Columns 67 to 71	Indication: "CLASS".
Column 72	Blank.

Row F

Columns 64 to 72	Blank.
------------------	--------

Row G

Columns 64 to 68	Blank.
Column 69	Indication of class (M) .
Column 70 to 72	Blank.

Row H

Columns 64 to 68	Blank.
Column 69	Relevant area to be invalidated with asterisks (M) .
Column 70 to 72	Blank.

FIELD 5

Indication regarding the validity of the pass

Row I/J/K/L

Indication regarding the validity of the InterRail Pass and Validation

Row I

Column 1	Blank.
Columns 2 to 24	The validity of the pass (M) , e.g. "xx DAYS/yy DAYS" or "xx DAYS/01 MONTH" or "01 MONTH".
Column 25 to 72	Blank.

Rows J/K/L

Columns 1 to 72	In case of an InterRail Pass with continuous validity: Blank.
Column 72	Blank.

Alternatively:

Rows J

Columns 1 to 14 Blank.

Column 15 to 71 The numbering of the days of validity of the Pass: each number must be followed by a dot (.) and 2 or 1 Blank fields depending on the travel day being a 1 or 2 digit number.

Column 72 Blank.

Rows K

Column 1 Blank.

Column 2 to 5 Indication: "DAY:"

Column 6 to 12 Blank.

Column 13 to 71 The number of Fields according to the validity of the pass for the indication of the respective travel dates, separated by a slash and 2 Blank fields: in the following way: .. ./ . . ./ .. ./

Column 72 Blank.

Rows L

Column 1 Blank.

Column 2 to 7 Indication: "MONTH:"

Column 8 to 12 Blank.

Column 13 to 71 The number of Fields according to the validity of the pass for the indication of the respective travel dates, separated by a slash and 2 Blank fields: in the following way: .. ./ . . ./ .. ./

Column 72 Blank.

FIELD 6

Details of applicable tariff and any special condition(s) of use

Row M

Columns 1 Blank.

Columns 2 to 7 Indication: "VALID:"

Column 8 to 52 The abbreviation of the RU in question (**M**), e.g. "NSB", or in case of an InterRail Global Pass: "ALL COMPANIES PARTICIPATING IN InterRail".

Row N

Column 1 Blank.

Columns 2 to 6 The applicable traveller category (**M**): "ADULT", "CHILD" or "YOUTH".

Column 7 to 52 Blank.

Row O

Columns 1 to 17 Blank.

Columns 18 to 50 In case of an InterRail Global Pass (**M**): "NOT VALID IN COUNTRY OF RESIDENCE"; otherwise Blank. *Column 51 to 52* Blank.

FIELD 7 **Details of purchase currency and price per ticket**

The general terms and conditions apply (see point 2.1 .7).

If used as "COMPLIMENTARY PASS" the term "NOT FOR SALE" has to be filled in instead of the prize indication.

2.12.2 - Administrative details

FIELD 8 The general conditions apply.

The details required are printed.

Column 64 to 71 The tickets are numbered: "PAGE 1/1" **(M)**.

2.12.3 - Specimen RCT2 "InterRail" ticket

2.12.3.1 - Specimen RCT2 "InterRail global pass"

Point A.12.1 - Specimen No. 23.

2.12.3.2 - Specimen RCT2 "InterRail one country pass"

Point A.12.2 - Specimen No. 24.

2.12.3.3 - Specimen RCT2 "InterRail complimentary pass"

Point A.12.3 - Specimen No. 25.

2.13 - Accompanied Vehicle Coupon

2.13.1 - Commercial information

FIELD 1

Row A

Column 1 Blank.

RCT2 classic

Columns 2 to 14 Acronym or logo of the RU responsible for issuing the RCT2 document **(M)**.

RCT2 compressed standard

Columns b to n, or 2 to 14 Acronym or logo of the RU responsible for issuing the RCT2 document **(M)**.

Columns 15 to 18 Blank.

Columns 19 to 51 RCT2 title "Accompanied Vehicle Coupon", flush left **(O, T)**.

Column 52 Blank. For RUs operating with a tear-off feature at column 52, this position corresponds to the perforation.

Row B

Column 1 Blank.

RCT2 classic

Columns 2 to 14 Acronym or logo of the RU responsible for issuing the RCT2 document (cont. from row A, otherwise blank) **(C)**.

RCT2 compressed standard

Columns b to n, or 2 to 14 Acronym or logo of the RU responsible for issuing the RCT2 document (cont. from row A, otherwise blank) **(C)**.

Columns 15 to 18 Blank (not to be used).

Columns 19 to 51 Additional information on the "Accompanied Vehicle Coupon" (Continuation from row A) **(O)**, or RCT2 title flush left, for RUs required to enter this information in a second language **(C)**.

Column 52 Blank. For RUs operating with a tear-off feature at column 52, this position corresponds to the perforation.

Row C

Column 1 Blank.

Columns 2 to 4 "CIV" acronym where a ticket is issued for a journey through two or more countries **(M)**.

Column 5 Blank.

Columns 6 to 9 code of the issuing RU, flush right **(M)**.

Column 10 Blank.

Columns 11 to 12 Abbreviation "AG", or equivalent, for tickets issued by travel agencies **(C)**.

Columns 13 to 18 Blank.

Columns 19 to 51 Product name, e. g. "DB-AUTOZUG" **(C)**.

Column 52 Blank. For RUs operating with a tear-off feature at column 52, this position corresponds to the perforation.

Row D

- Column 1 to 18* Blank.
- Columns 19 to 37* Journey number - cf. element 32 of message Technical Document B.6 **(M)**.
- Column 38* Blank.
- Columns 39 to 51* Blank unless a vehicle with trailer is loaded, in which case indication "TRAILER:", flush left **(C, O)**.
- Column 52* Blank.
- Columns 53 to 71* Blank unless a vehicle with trailer is loaded, in which case registration number of trailer **(C)**.
- Column 72* Blank.

FIELD 2 Information detailing passenger's full name and the type of vehicle and, if applicable, trailer

Row A

- Columns 53 to 71* Passenger's full name, flush left **(M)**.
Some RUs print the given name before the family name. This is a matter for the issuing RU to decide. However, where the entry is too long, it is the given name that must be truncated so that the family name can be entered in full.

- Column 72* Blank.

Row B

- Columns 53 to 71* Details of vehicle type (e.g. Mercedes E 230 or Fiat Uno) **(M)**.
- Column 72* Blank.

Row C

- Columns 53 to 71* Registration number of vehicle **(M)**.
- Column 72* Blank.

FIELD 3 Details of departure and arrival stations together with dates and times of departure and arrival and name(s) of carrier(s)

Rows E/F Entry of non-variable data

- Column 1* Blank.
- Columns 2 to 6* Details of date of departure, i.e. the indication "DATE" or a suitable pictogram **(M)**.

Where a word is printed for "DATE", this is not translated, since it always appears in this box.

- Column 7* Blank.
- Columns 8 to 12* Details of time of departure, i.e. the indication "TIME" or a suitable pictogram **(M)**.

Where a word is printed for "TIME", this is not translated, since it always appears in this box.

- Column 13* Blank.
- Columns 14 to 30* Indication: "DEPARTURE" or "FROM", flush left **(M)**.

European Railway Agency

ERA/TD/2009-09/INT: ANNEX B.6 of TAP TSI

Columns 31 to 34 Arrow pointing from left to right. This arrow can be symbolised by successive "dash" (-) and "greater than" (>) characters or, for RUs unable to print an arrow, by a dash **(O)**.

Columns 35 to 51 Indication: "ARRIVAL" or "TO", flush left **(M)**.

Column 52 Blank.

Columns 53 to 57 Details of date of arrival, i.e. the indication "DATE" or a suitable pictogram **(M)**.

Same comments with regard to translation as for date of departure.

Column 58 Blank.

Columns 59 to 63 Details of time of arrival, i.e. the indication "TIME" or a suitable pictogram **(M)**.

Same comments with regard to translation as for time of departure.

Columns 64 to 66 Blank.

Row G Entry of variable data

Column 1 Blank.

Columns 2 to 6 Date of departure in the format "DD/MM" or "DD.MM" (DD = day, MM = month) - cf. element 21A of message Technical Document B.6 **(M)**.

Column 7 Blank.

Columns 8 to 12 Time of departure in the format hh.mm (h = hours, m = minutes) or hh:mm within the 24-hour system **(C)**.

Column 13 Blank.

Columns 14 to 30 Name of departure station in 17 characters, flush left **(M)**.

Columns 31 to 34 Arrow pointing from left to right. This arrow can be symbolised by successive "dash" (-) and "greater than" (>) characters or, for RUs unable to print an arrow, by a dash **(O)**.

Columns 35 to 51 Name of arrival station in 17 characters, flush left **(M)**.

Column 52 Blank.

Columns 53 to 57 Date of arrival in the format "DD/MM" or "DD.MM" (DD = day, MM = month) - cf. element 21H of message Technical Document B.6 **(M)**.

Column 58 Blank.

Columns 59 to 63 Time of arrival in the format "hh.mm" (hh = hours, mm = minutes) or hh:mm within the 24-hour system **(C)**.

Column 64 Blank.

Row H Name(s) of carrier(s)

Column 1 Blank.

Column 4 Asterisk.

Column 10 Asterisk.

Columns 14 to 51 The word "CARRIER" flush left from column 38, followed by the carrier's code (4-digit code). Up to four carriers may be indicated **(M)**.

Columns 55 Asterisk.

Columns 61 Asterisk.

Columns 69 Asterisk.

FIELD 4 Rows E/F

Columns 67 to 71 Indication "CLASS" not required, can be omitted on blank-to-blank tickets **(M)**.
Column 72 Blank.

Row G

Columns 65 to 71 Relevant area to be invalidated with an asterisk at column 69 in the case of pre-printed stock **(C, O)**. *Column 72* Blank.

**FIELD 5
of vehicle(s)**

Details of motorail train and stowage point(s) for and loading/unloading

Row I

Column 1 Blank.
Columns 2 to 6 Indication: "TRAIN" or corresponding pictogram, flush left **(M)**.
Column 7 Blank.
Columns 8 to 12 Train number, flush right **(M)**.
Column 13 Blank.
Columns 14 to 16 Train category, flush right - cf. element 48 of message Technical Document B.6 **(C)**.
Columns 17 to 55 Number of the car or space **(O)** "CAR:" or "SPACE:" with number.
or
Columns 17 to 34 Blank.
Columns 35 to 47 Indication: "LOADING LIST", flush left **(C)**.
Columns 48 to 52 Blank.
Columns 53 to 55 Loading list no. - cf. element 53 of message Technical Document B.6 **(C)**.
Columns 56 to 72 Blank.

Row J

Column 1 Blank.
Columns 2 to 33 Indication: "LOADING OF VEHICLE", flush left **(M)**.
Column 34 Blank.
Columns 35 to 71 Indication: "UNLOADING OF VEHICLE", flush left **(C)**.
or
Columns 35 to 71 Available to RUs for printing information about the vehicles carried **(O)**.
Column 72 Blank.

Rows K/L Details of loading/unloading

Row K

Column 1 Blank.
Columns 2 to 6 Indication: "DATE", flush left **(M)**.
Column 7 Blank.
Columns 8 to 13 Indication: "START", flush left **(M)**.
Column 14 Blank.
Columns 15 to 19 Indication: "END", flush left **(M)**.

European Railway Agency

ERA/TD/2009-09/INT: ANNEX B.6 of TAP TSI

<i>Column 20</i>	Blank.
<i>Columns 21 to 33</i>	Indication: "LOADING POINT", flush left (M) .
<i>Column 34</i>	Blank.
<i>Columns 35 to 39</i>	Indication: "DATE", flush left (C) .
<i>Column 40</i>	Blank.
<i>Columns 41 to 46</i>	Indication: "START", flush left (C) .
<i>Column 47</i>	Blank.
<i>Columns 48 to 52</i>	Indication: "END", flush left (C) .
<i>Column 53</i>	Blank.
<i>Columns 54 to 71</i>	Indication: "UNLOADING POINT", flush left (C) .
<i>or</i>	
<i>Columns 35 to 71</i>	Available to RUs for printing information about the vehicles carried (O) .
<i>Column 72</i>	Blank.
Row L	
<i>Column 1</i>	Blank.
<i>Columns 2 to 6</i>	Date of loading (day of departure) in the format "DD/MM" or "DD.MM" (DD = day, MM = month) - cf. element 21C of message Technical Document B.6 (M) .
<i>Column 7</i>	Blank.
<i>Columns 8 to 13</i>	Start of loading period in the format hh.mm (h = hours, m = minutes) or hh:mm within the 24-hour system - cf. element 41 D of message Technical Document B.6 (M) .
<i>Column 14</i>	Blank.
<i>Columns 15 to 19</i>	End of loading period in the format "hh.mm" (h = hours, m = minutes) or "hh:mm" within the 24-hour system - cf. element 41 E of message Technical Document B.6 (M) .
<i>Column 20</i>	Blank.
<i>Columns 21 to 33</i>	Name of loading station (generally departure station) in 17 characters, flush left (M) .
<i>Column 34</i>	Blank.
<i>Columns 35 to 39</i>	Date of unloading (day of arrival) in the format "dd/mm" or "dd.mm" (DD = day, MM = month) - cf. element 21D of message Technical Document B.6 (C) .
<i>Column 40</i>	Blank.
<i>Columns 41 to 46</i>	Start of unloading period in the format "hh.mm" (h = hours, m = minutes) or "hh:mm" within the 24-hour system - cf. element 41 F of message Technical Document B.6 (C) .
<i>Column 47</i>	Blank.
<i>Columns 48 to 52</i>	End of unloading period in the format "hh.mm" (h = hours, m = minutes) or "hh:mm" within the 24-hour system - cf. element 41G of message Technical Document B.6 (C) .
<i>Column 53</i>	Blank.
<i>Columns 54 to 71</i>	Name of unloading station (generally the arrival station) in 17 characters, flush left (C) .
<i>or</i>	
<i>Columns 35 to 71</i>	Available to RUs for printing information about the vehicles carried (O) .
<i>Column 72</i>	Blank.

FIELD 6	Details of vehicle(s) and any specific features (applicable tariff or tariffs)
Row M	Details of vehicle loaded (motor car or motorcycle)
<i>Column 1</i>	Blank.
<i>Columns 2 to 5</i>	Indication: "CAR" or "MOTORCYCLE" (M) .
<i>Column 6</i>	Blank.
<i>Column 7</i>	Letter "L" for length of vehicle (M) .
<i>Column 8</i>	Blank.
<i>Columns 9 to 12</i>	Details of length in cm followed by a forward slash "/" (M) .
<i>Column 13</i>	Letter "W" for width of vehicle (M) .
<i>Column 14</i>	Blank.
<i>Columns 15 to 18</i>	Details of width in cm followed by a forward slash "/" (M) .
<i>Column 19</i>	Letter "H" for height of vehicle (M) .
<i>Column 20</i>	Blank.
<i>Columns 21 to 23</i>	Details of height in cm (M) .
<i>or</i>	
<i>Columns 2 to 23</i>	"VEHICLE CATEGORY" number of category - cf. element 29A of message Technical Document B.6 (M) .
<i>Columns 24 to 37</i>	Blank.
<i>Columns 38 to 43</i>	Indication "HEIGHT:" (C) .
<i>Columns 45 to 50</i>	Height in cm (C) .
<i>or</i>	
<i>Columns 24 to 50</i>	Available to RUs for printing information about the vehicles carried (O) .
Row N	Details of trailer
<i>Column 1</i>	Blank.
<i>Columns 2 to 5</i>	Suitable abbreviation "TRA" for trailer (M) .
<i>Column 6</i>	Blank.
<i>Column 7</i>	Letter "L" for length of vehicle (M) .
<i>Column 8</i>	Blank.
<i>Columns 9 to 12</i>	Details of length in cm followed by a forward slash "/" (M) .
<i>Column 13</i>	Letter "W" for width of vehicle (M) .
<i>Column 14</i>	Blank.
<i>Columns 15 to 18</i>	Details of width in cm followed by a forward slash "/" (M) .
<i>Column 19</i>	Letter "H" for height of vehicle (M) .
<i>Column 20</i>	Blank.
<i>Columns 21 to 23</i>	Details of height in cm (M) .
<i>or</i>	
<i>Columns 2 to 23</i>	"TRAILER CATEGORY" number of category - cf. element 45A of message Technical Document B.6 (M) .
<i>Columns 24 to 26</i>	Blank.
<i>Columns 37 to 51</i>	Available to RUs for printing information about the vehicles carried (O) .

Rows M/N

Columns 27 to 51 Specific information concerning the loaded vehicle which the passenger needs to be able to check for insurance purposes, e.g.:

"MOTOR CAR WITH ROOF ATTACHMENT" or "MOTOR CAR WITH FABRIC ROOF" or "LUGGAGE RACK EMPTY" or "LUGGAGE RACK LOADED" or "SURFBOARD(S)" carried and their number **(C, O)**.

Row O Details of motorcycle, if applicable, or else additional details of vehicle(s) loaded

Column 1 Blank.

Columns 2 to 51 Indication: "MOTORCYCLE" or "MOTORCYCLE WITH SIDE-CAR" or "BOAT" or "MOTOR CAR WITH ROOF WIDTH UP TO 135 CM" (design type A1, e.g. saloon car, estate car) or "MOTOR CAR WITH ROOF WIDTH UP TO 155 CM" (design type A2, e.g. jeep, van, minibus) or "MOTOR CAR WITH TRAILER" **(C, O)**.

or

Columns 2 to 23 "BOAT CATEGORY" number of category - cf. element 29B of message Technical Document B.6 **(M)**.

Columns 24 to 26 Blank.

Columns 27 to 51 Indication of special tariffs (i.e. "SPECIAL OFFER") - cf. element 42A of message Technical Document B.6 **(M)**.

FIELD 7 **Details of purchase currency and price per ticket**

The general terms and conditions apply (see point 2.1 .7).

2.13.2 - Administrative details

FIELD 8 The general terms and conditions apply (see points 2.1.8 or 2.1.9).

The details required are printed.

2.13.3 - Specimen RCT2 "ACCOMPANIED VEHICLE COUPON"

2.13.3.1 - Specimen RCT2 "ACCOMPANIED VEHICLE COUPON", version 1

Point A.13.1 - Specimen No. 26.

2.13.3.2 - Specimen RCT2 "ACCOMPANIED VEHICLE COUPON", version 2

Point A.13.2 - Specimen No. 27.

2.14 - Eurail Pass

2.14.1 - Eurail Pass alone

2.14.1.1 - Commercial information

FIELD 1

Row A

Column 1 Blank.

RCT2 classic

Columns 2 to 14 Acronym or logo of the RU responsible for issuing the RCT2 document **(M)**.

RCT2 compressed standard

Columns b to n, or 2 to 14 Acronym or logo of the RU responsible for issuing the RCT2 document **(M)**.

Columns 15 to 18 Blank.

Columns 19 to 37 For all passes except Eurail Select Pass "EURAIL PASS", for Eurail Select Pass "EURAIL SELECT PASS" **(M)**.

Column 38 Blank.

Columns 39 to 48 Indication: "FULL NAME:" **(M)**.

Columns 49 to 52 Blank.

Row B

Column 1 Blank.

RCT2 classic

Columns 2 to 14 Acronym or logo of the RU responsible for issuing the RCT2 document (cont. from row A, otherwise blank) **(C)**.

RCT2 compressed standard

Columns b to n, or 2 to 14 Acronym or logo of the RU responsible for issuing the RCT2 document (cont. from row A, otherwise blank) **(C)**.

Columns 15 to 18 Blank.

Columns 19 to 37 Blank; except **(M)**:

– In case of a Eurail Select Pass the applicable indication 3, 4 or 5 COUNTRIES, if applicable, preceded by the indication "SAVER",

– In case of a Complimentary Pass "COMPLIMENTARY PASS".

Column 38 Blank.

Columns 39 to 46 Indication: "COUNTRY:" **(M)**

Columns 47 to 52 Blank.

Row C

Column 1 Blank.

Columns 2 to 4 "CIV" acronym **(M)**.

Column 5 Blank.

Columns 6 to 9 The Code of the issuing RU **(M)**.

Column 10 to 38 Blank.

Columns 39 to 50 Indication: "PASS-/ID-NR:" **(M)**

Columns 51 to 52 Blank.

Row D

Column 1 Blank.
Columns 2 to 7 Indication: "VALID:" **(M)**
Columns 8 to 11 Blank.
Columns 12 to 34 Indication of the travel document's validity, in the following format: "DD.MM.YYYY - DD.MM.YYYY" **(M)**.
Columns 35 to 72 Blank.

FIELD 2 **Indication detailing the traveller's full name, country of residence and pass/ID number**

Row A

Columns 53 to 71 Traveller's family name and given name, flush left. If these indications are too long, the given name should be abbreviated in order to print the family name in full. In case of a Saver Pass: "SEE CONTROL VOUCHER" **(M)**.

Column 72 Blank.

Row B

Columns 53 to 71 Country of residence. In case of a SAVER PASS: "SEE CONTROL VOUCHER" **(M)**.

Column 72 Blank.

Row C

Columns 53 to 71 Passport or Identity card number. In case of a SAVER PASS: "SEE CONTROL VOUCHER" **(M)**.

Column 72 Blank.

FIELD 3

Rows E/F Entry of non-variable data.

Columns 1 to 72 Blank.

RU using pre-printed tickets or templates may let the text in the rows E/F unchanged.

Row G Entry of variable data.

Column 1 Blank.

Columns 2 to 6 Relevant area to be invalidated with asterisks **(M)**.

Column 7 Blank.

Columns 8 to 12 Relevant area to be invalidated with asterisks **(M)**.

Column 13 Blank.

Columns 14 to 51 Depending on the pass issued the text:

– Eurail Global Pass: "EURAIL" if applicable followed by "SAVER"

– Eurail Regional Pass and Eurail National Pass: "EURAIL" if applicable followed by "SAVER"

– Eurail Select Pass: the names of the countries for which the pass in question is valid in alphabetical order **(M)**

European Railway Agency

ERA/TD/2009-09/INT: ANNEX B.6 of TAP TSI

Row H

<i>Column 1</i>	Blank.
<i>Columns 2 to 6</i>	Relevant area to be invalidated with asterisks (M) .
<i>Column 7</i>	Blank.
<i>Columns 8 to 12</i>	Relevant area to be invalidated with asterisks (M) .
<i>Column 13</i>	Blank.
<i>Columns 14 to 51</i>	Depending on the pass issued the text:
–	Eurail Global Pass: "GLOBAL PASS"
–	Eurail Regional Pass and Eurail National Pass: the product name
–	Eurail Select Pass: the names of the countries for which the pass in question is valid in alphabetical order (continuation of row G) (M)

Rows G/H

<i>Column 52</i>	Blank.
<i>Columns 53 to 57</i>	Relevant area to be invalidated with asterisks (M) .
<i>Column 58</i>	Blank.
<i>Columns 59 to 63</i>	Relevant area to be invalidated with asterisks (M) .

FIELD 4

Indication of class of travel.

Row E

<i>Columns 64 to 66</i>	Blank.
<i>Columns 67 to 71</i>	Indication: "CLASS" (M)
<i>Column 72</i>	Blank.

Row F

<i>Columns 64 to 72</i>	Blank.
-------------------------	--------

Row G

<i>Columns 64 to 68</i>	Blank.
<i>Column 69</i>	Indication of class (M) .
<i>Columns 70 to 72</i>	Blank.

Row H

<i>Columns 64 to 68</i>	Blank.
<i>Column 69</i>	Relevant area to be invalidated with asterisks (M) .
<i>Columns 70 to 72</i>	Blank.

FIELD 5

Rows I/J/K/L

Indication regarding the validity of the EURAIL Pass and validation

Row I

<i>Columns 1</i>	Blank.
<i>Columns 2 to 18</i>	The validity of the pass (M) , e.g. "xx DAYS/ 0x MONTHS" or "01 MONTH" or "0x MONTHS"
<i>Columns 19 to 72</i>	Blank.

Row J/K/L

Columns 1 to 72 In case of a Eurail Pass with continuous validity: Blank

Alternatively:

Row J

Columns 1 to 14 Blank.

Columns 15 to 71 The numbering of the days of validity of the Pass: each number must be followed by a dot (.) and 2 or 1 blank fields depending on the travel day being a 1 or 2 digit number.

Column 72 Blank.

Row K

Column 1 Blank.

Columns 2 to 5 Indication: "DAY:".

Columns 6 to 12 Blank.

Columns 13 to 71 The number of fields according to the validity of the pass for the indication of the respective travel dates:

– For a pass with a maximum of 10 flexible travel days the fields have to be separated by a slash and 2 blank fields: in the following way: . / . / . /

– For a pass with more than 10 flexible travel days the fields have to be separated by a slash and 1 blank field: in the following way: . / . / . /

Column 72 Blank.

Row L

Column 1 Blank.

Columns 2 to 7 Indication: "MONTH:".

Columns 8 to 12 Blank.

Columns 13 to 71 The number of fields according to the validity of the pass for the indication of the respective travel dates:

– For a pass with a maximum of 10 flexible travel days the fields have to be separated by a slash and 2 blank fields: in the following way: . / . / . /

– For a pass with more than 10 flexible travel days the fields have to be separated by a slash and 1 blank field: in the following way: . / . / . /

Column 72 Blank.

FIELD 6 Indication of the traveller category and possible conditions of use

Row M

Column 1 Blank.

Columns 2 to 7 Indication: "VALID:".

Columns 8 to 52 The abbreviation of the RU in question (**M**), e.g. "HZ, SZ, MAV", or in case of a Eurail Global Pass: "ALL COMPANIES PARTICIPATING IN GLOBAL PASS"

Rows N

Column 1 Blank.

Columns 2 to 20 The applicable traveller category **(M)**: "ADULT", "CHILD" or "YOUTH" or in case of a Saver Pass the number of travellers per category, e.g. "02ADULTS/03CHILDREN"

Columns 21 to 52 Blank.

Rows O

Columns 1 to 17 Blank.

Columns 18 to 51 The text **(M)** "ONLY VALID WITH COVER AND PASSPORT" or in case of a Saver Pass "ONLY VALID WITH COVER, PASSPORTS & CONTROL VOUCHER".

Column 52 Blank.

FIELD 7 Indication of the currency applied and price of the pass

Details of purchase currency and price per ticket.

The general terms and conditions apply (see point 2.1.7)

In case of a

– Complimentary Pass: "NOT FOR SALE"

– In case of a pass issued in exchange: "EXCHANGE"

2.14.1.2 - Administrative details

FIELD 8 The general terms and conditions apply (see points 2.1.8 or 2.1.9)

The necessary indications are printed.

Columns 64 to 71 Numbering of the pages **(M)**: "PAGE 1/1", in case of a Saver Pass "PAGE 1/2"

2.14.2.1 - Commercial information (all details shall be written in English)

FIELD 1

Row A/B Same indications as on Eurail-Pass

Row C

Column 1 Blank.

Columns 2 to 4 "CIV" acronym **(M)**.

Column 5 Blank.

Columns 6 to 9 The Code of the issuing RU **(M)**.

Columns 10 to 18 Blank.

Columns 19 to 37 "CONTROL VOUCHER" **(M)**

Columns 39 to 50 "PASS-/ID-Nr." **(M)**

Columns 51 to 52 Blank.

European Railway Agency

ERA/TD/2009-09/INT: ANNEX B.6 of TAP TSI

Row D

Column 1 Blank.
Columns 2 to 59 The text **(M)**: "THIS CONTROL VOUCHER ALONE IS NOT VALID FOR TRANSPORTATION".
Columns 60 to 72 Blank.

FIELD 2 Information detailing traveller's full name, country of residence and pass/ID number

Rows A/B

Columns 53 to 72 Blank.

Row C

Columns 53 to 71 Indication of the number of travellers per category **(M)**: e.g. "02 ADULTS/03CHILDREN"
Column 72 Blank.

FIELD 3/4 Same indications as on Eurail Pass

FIELD 5 Indication regarding the validity of the pass

Rows I/J/K/L Indication of the traveller's full name, passport number and country of residence

Row I

Column 1 + 2 Blank.
Columns 3 to 8 Indication: "NAMES:" **(M)**
Columns 9 to 21 Blank.
Columns 22 to 33 Indication: "PASSPORT-NR:" **(M)**
Column 34 to 36 Blank.
Columns 37 to 44 Indication: "COUNTRY:" **(M)**
Columns 45 to 72 Blank.

Row J/K/L

Column 1 Blank.
Columns 2 to 72 Travellers' family name, given name and gender, (if these indications are too long, the given name should be abbreviated in order to print the family name in full) followed by passport no. and country of residence, which must be aligned with the title **(M)**.

FIELD 6 Continuation of field 5

Rows M/N

Column 1 Blank.
Columns 2 to 51 In case of more than 3 travellers continuation of field 5.

Rows O

Columns 1 to 52 Blank.

FIELD 7	Price field
Row N	
<i>Columns 53 to 72</i>	Blank.
Row O	
<i>Columns 53 to 56</i>	Blank.
<i>Columns 57 to 71</i>	Relevant area to be invalidated with asterisks (M) .
<i>Column 72</i>	Blank.

2.14.2.2 - Service indications

FIELD 8	The general terms and conditions apply (see points 2.1.8 or 2.1.9). The necessary indications are printed.
<i>Columns 64 to 71</i>	Numbering of pages (M) : "PAGE 2/2".
<i>Column 72</i>	Blank.

2.14.3 - RCT2 "EURAILPASS"

2.14.3.1 - Specimen of RCT2 "Eurail Pass Global ticket"

Point A.14.1 - Specimen No. 28.

2.14.3.2 - Specimen of RCT2 "Eurail Pass Global Saver ticket"

Point A.14.2.1 - Specimen No. 29, point A.14.2.2 - Specimen No.30 (Control Voucher).

2.14.3.3 - Specimen of RCT2 "Eurail Select Pass"

Point A.14.3.1 - Specimen No. 31, point A.14.3.2 - Specimen No.32 (Saver) and point A.14.3.3 - Specimen No.33 (Control Voucher).

2.14.3.4 - Specimen of "Eurail Select Pass"

Point A.14.4.1 - Specimen No. 34, point A.14.4.2 - Specimen No.35 (Saver) and point A.14.4.3 - Specimen No.36 (Control Voucher).

2.14.3.5 - Specimen of RCT2 "Eurail one country Pass"

Point A.14.5.1 - Specimen No. 37, point A.14.5.2 - Specimen No.38 (Saver) and point A.14.5.3 - Specimen No.39 (Control Voucher).

2.14.3.6 - Specimen of RCT2 "Eurail Pass Complimentary Pass"

Point A.14.6 - Specimen No. 40.

2.14.3.7 - Specimen of RCT2 "Eurail Pass Exchange Ticket"

Point A.14.7 - Specimen No. 41.

2.15 - Travel Voucher for compensation

2.15.1 - Commercial information

The travel voucher shall be produced in duplicate.
 Part 1 shall be given to the passenger.
 Part 2 shall be filed and used for audits and clearing operations.

FIELD 1

Row A

Column 1 Blank.

RCT2 classic

Columns 2 to 14 Acronym or logo of the RU responsible for issuing the RCT2 document **(M)**.

RCT2 compressed standard

Columns b to n, or 2 to 14 Acronym or logo of the RU responsible for issuing the RCT2 document **(M)**.

Columns 15 to 18 Blank.

Columns 19 to 51 Name of the RCT2 "TRAVEL VOUCHER", flush left **(M)**.

Column 52 Blank. For RUs operating with a tear-off feature at column 52, this position corresponds to the perforation.

Row B

Column 1 Blank.

RCT2 classic

Columns 2 to 14 Acronym or logo of the RU responsible for issuing the RCT2 document (cont. from row A, otherwise blank) **(C)**.

RCT2 compressed standard

Columns b to n, or 2 to 14 Acronym or logo of the RU responsible for issuing the RCT2 document (cont. from row A, otherwise blank) **(C)**.

Columns 15 to 18 Blank.

Columns 19 to 51 Name of the RCT2 (continuation of row A), if RUs must supply this information in a second language.

Column 52 Blank. For RUs operating with a tear-off feature at column 52, this position corresponds to the perforation.

Row C

Column 1 Blank.

Columns 2 to 4 "CIV" acronym **(M)**.

Column 5 Blank.

Columns 6 to 9 code of the issuing RU, flush right **(M)**.

Columns 10 to 18 Blank.

Columns 19 to 51 Description of the offer in English "VOUCHER" **(M)**.

Column 52 Blank. For RUs operating with a tear-off feature at column 52, this position corresponds to the perforation.

Row D

Column 1 Blank.

Columns 2 to 51 Indication: "VALID TO:" **(M)**

and indication of the travel voucher's validity, in the following format: "DD/MM/YYYY" (DD = day, MM = month and YY or YYYY = year) **(M)**.

Column 52 Blank. For RUs operating with a tear-off feature at column 52, this position corresponds to the perforation.

FIELD 2 Indication of the family name/given name of the passenger and the country of residence

Row A

Columns 53 to 71 Passenger's family name and given name, flush left **(M)**.

Some RUs print the given name before the family name. This is a matter for the issuing RU to decide. However, where the entry is too long, it is the given name that must be truncated so that the family name can be entered in full.

Column 72 Blank.

Row B

Columns 53 to 71 Country of residence **(M)**.

Column 72 Blank.

FIELD 3

Rows E/F

Entry of non-variable data.

Columns 1 to 72 Blank (no text required).

RU using pre-printed tickets or templates may leave the text in rows E and F unchanged.

Rows G/H

Entry of variable data.

Column 1 Blank.

Columns 2 to 6 Invalidate field by entering an asterisk **(M)**.

Column 7 Blank.

Columns 8 to 12 Invalidate field by entering an asterisk **(M)**.

Column 13 Blank.

Columns 14 to 51 Invalidate field by entering an asterisk **(M)**.

Column 52 Blank.

Columns 53 to 57 Invalidate field by entering an asterisk **(M)**.

Column 58 Blank.

Columns 59 to 63 Invalidate field by entering an asterisk **(M)**.

Column 64 Blank.

FIELD 4 Indication of class of travel. Field 4 is printed separately from the other data in order to make this information stand out more clearly

Rows E/F

Columns 65 to 66 Blank.
Columns 67 to 71 Indication: "CLASS" (M).
Column 72 Blank.

Rows G/H

Column 67 to 71 Invalidate field by entering an asterisk (M).
Column 72 Blank.

FIELD 5 Indication regarding the conditions of use of the Travel Voucher

Rows IJ/K/L

Column 1 Blank.
Columns 2 to 71 Conditions of use in national language(s) and English.
Column 72 Blank.

FIELD 6 Indication of carriers concerned. These indications shall not be mentioned in Part 1 (to be given to the passenger)

Row M

Column 1 Blank.
Columns 2 to 51 Indication in national language(s) "CARRIERS".
Columns 52 to 72 Blank.

Rows N/O

Version 1

Column 1 RUs which are able to enter carrier indications by machine.
Blank.

Columns 2 to 51 Indication of code of carriers concerned (M).

Column 52 Blank.

Version 2

Column 1 RUs which are unable to enter carrier indications by machine.

Column 1 Blank.
Columns 2 to 51 Fields separated by forward slashes to allow manual entry of carriers (M).
Column 52 Blank.

FIELD 7 Indication of the currency applied and the price per travel document

The general terms and conditions apply, see point 2.1.7

2.15.2 - Service information

FIELD 8 The general terms and conditions apply, see points 2.1.8 or 2.1.9.
The necessary indications are printed.

2.15.3 - Specimen of RCT2 "TRAVEL VOUCHER" tickets

2.15.3.1 - Specimen of RCT2 "TRAVEL VOUCHER" tickets, version 1

Point A.15.1 - Specimen No. 42.

2.15.3.2 - Specimen of RCT2 "TRAVEL VOUCHER" tickets, version 2

Point A.15.2 - Specimen No. 43.

Explanatory notes to the grid of columns, rows and superimposed fields:

- Field 1: Commercial information
Rows A to C, columns 2 to 51, row D, columns 2 to 71
(rows A/B, columns 2 to 4 = company, row C, columns 6 to 9 = RU code)
- Field 2: Family name/given name of passenger as well as number of adults and children
Rows A to C, columns 53 to 71
- Field 3: Particulars of the itinerary reserved, date and time of departure, date and time of arrival
Rows E and F, columns 2 to 63 for non-variable information,
Row G, columns 2 to 63 for variable data
- Field 4: Class of coach
Rows E and F, columns 67 to 71 for non-variable information, Row G, columns 67 to 71 for variable data
- Field 3 and 4: Row H, columns 2 to 71, second segment
- Field 5: Details of train, carriage and seats/berths reserved
Rows I to L, columns 1 and 72 "blank" on ticket (represented model "TICKET + RESERVATION")
- Field 6: Tariffs applied (no abbreviations), terms and conditions of use
Rows M, N and O: row M, columns 2 to 71, row N and O, columns 2 to 51
- Field 7: Purchase currency and amount per ticket
Rows N and O, columns 53 to 71
- Field 8: Administrative information
Rows P, Q and R

A.1.2 - Specimen No. 2: Stock (Fields 7 and 8) - Version 1

(CIV-MDI / UIC)	
0	1 0
1	2 0
2	3 0
3	4 0
4	5 0
5	6 0
6	7 0
7	8 0
8	9 0
9	0
RCT2	1 0
ATP2	2 0
	3 0
	4 0
	5 0
	6 0
	7 0
	8 0
	9 0
	0
	1 0
	2 0
	3 0
	4 0
	5 0
	6 0
	7 0
	8 0
	9 0
	0
	1 0
	2 0
	3 0
	4 0
	5 0
	6 0
	7 0
	8 0
	9 0
	0
	1 0
	2 0
	3 0
	4 0
	5 0
	6 0
	7 0
	8 0
	9 0
	0
	1 0
	2 0
	3 0
	4 0
	5 0
	6 0
	7 0
	8 0
	9 0
	0
	1 0
	2 0
	3 0
	4 0
	5 0
	6 0
	7 0
	8 0
	9 0
	0
	1 0
	2 0
	3 0
	4 0
	5 0
	6 0
	7 0
	8 0
	9 0
	0
	1 0
	2 0
	3 0
	4 0
	5 0
	6 0
	7 0
	8 0
	9 0
	0
	1 0
	2 0
	3 0
	4 0
	5 0
	6 0
	7 0
	8 0
	9 0
	0
	1 0
	2 0
	3 0
	4 0
	5 0
	6 0
	7 0
	8 0
	9 0
	0
	1 0
	2 0
	3 0
	4 0
	5 0
	6 0
	7 0
	8 0
	9 0
	0
	1 0
	2 0
	3 0
	4 0
	5 0
	6 0
	7 0
	8 0
	9 0
	0
	1 0
	2 0
	3 0
	4 0
	5 0
	6 0
	7 0
	8 0
	9 0
	0
	1 0
	2 0
	3 0
	4 0
	5 0
	6 0
	7 0
	8 0
	9 0
	0
	1 0
	2 0
	3 0
	4 0
	5 0
	6 0
	7 0
	8 0
	9 0
	0
	1 0
	2 0
	3 0
	4 0
	5 0
	6 0
	7 0
	8 0
	9 0
	0
	1 0
	2 0
	3 0
	4 0
	5 0
	6 0
	7 0
	8 0
	9 0
	0
	1 0
	2 0
	3 0
	4 0
	5 0
	6 0
	7 0
	8 0
	9 0
	0
	1 0
	2 0
	3 0
	4 0
	5 0
	6 0
	7 0
	8 0
	9 0
	0
	1 0
	2 0
	3 0
	4 0
	5 0
	6 0
	7 0
	8 0
	9 0
	0
	1 0
	2 0
	3 0
	4 0
	5 0
	6 0
	7 0
	8 0
	9 0
	0
	1 0
	2 0
	3 0
	4 0
	5 0
	6 0
	7 0
	8 0
	9 0
	0
	1 0
	2 0
	3 0
	4 0
	5 0
	6 0
	7 0
	8 0
	9 0
	0
	1 0
	2 0
	3 0
	4 0
	5 0
	6 0
	7 0
	8 0
	9 0
	0
	1 0
	2 0
	3 0
	4 0
	5 0
	6 0
	7 0
	8 0
	9 0
	0
	1 0
	2 0
	3 0
	4 0
	5 0
	6 0
	7 0
	8 0
	9 0
	0
	1 0
	2 0
	3 0
	4 0
	5 0
	6 0
	7 0
	8 0
	9 0
	0
	1 0
	2 0
	3 0
	4 0
	5 0
	6 0
	7 0
	8 0
	9 0
	0
	1 0
	2 0
	3 0
	4 0
	5 0
	6 0
	7 0
	8 0
	9 0
	0
	1 0
	2 0
	3 0
	4 0
	5 0
	6 0
	7 0
	8 0
	9 0
	0
	1 0
	2 0
	3 0
	4 0
	5 0
	6 0
	7 0
	8 0
	9 0
	0
	1 0
	2 0
	3 0
	4 0
	5 0
	6 0
	7 0
	8 0
	9 0
	0
	1 0
	2 0
	3 0
	4 0
	5 0
	6 0
	7 0
	8 0
	9 0
	0
	1 0
	2 0
	3 0
	4 0
	5 0
	6 0
	7 0
	8 0
	9 0
	0
	1 0
	2 0
	3 0
	4 0
	5 0
	6 0
	7 0
	8 0
	9 0
	0
	1 0
	2 0
	3 0
	4 0
	5 0
	6 0
	7 0
	8 0
	9 0
	0
	1 0
	2 0
	3 0
	4 0
	5 0
	6 0
	7 0
	8 0
	9 0
	0
	1 0
	2 0
	3 0
	4 0
	5 0
	6 0
	7 0
	8 0
	9 0
	0
	1 0
	2 0
	3 0
	4 0
	5 0
	6 0
	7 0
	8 0
	9 0
	0
	1 0
	2 0
	3 0
	4 0
	5 0
	6 0
	7 0
	8 0
	9 0
	0
	1 0
	2 0
	3 0
	4 0
	5 0
	6 0
	7 0
	8 0
	9 0
	0
	1 0
	2 0
	3 0
	4 0
	5 0
	6 0
	7 0
	8 0
	9 0
	0
	1 0
	2 0
	3 0
	4 0
	5 0
	6 0
	7 0
	8 0
	9 0
	0
	1 0
	2 0
	3 0
	4 0
	5 0
	6 0
	7 0
	8 0
	9 0
	0
	1 0
	2 0
	3 0
	4 0
	5 0
	6 0
	7 0
	8 0
	9 0
	0
	1 0
	2 0
	3 0
	4 0
	5 0
	6 0
	7 0
	8 0
	9 0
	0
	1 0
	2 0
	3 0
	4 0
	5 0
	6 0
	7 0
	8 0
	9 0
	0
	1 0
	2 0
	3 0
	4 0
	5 0
	6 0
	7 0
	8 0
	9 0
	0
	1 0
	2 0
	3 0
	4 0
	5 0
	6 0
	7 0
	8 0
	9 0
	0
	1 0
	2 0
	3 0
	4 0
	5 0
	6 0
	7 0
	8 0
	9 0
	0
	1 0
	2 0
	3 0
	4 0
	5 0
	6 0
	7 0
	8 0
	9 0
	0
	1 0
	2 0
	3 0
	4 0
	5 0
	6 0
	7 0
	8 0
	9 0
	0
	1 0
	2 0
	3 0
	4 0
	5 0
	6 0
	7 0
	8 0
	9 0
	0
	1 0
	2 0
	3 0
	4 0
	5 0
	6 0
	7 0
	8 0
	9 0
	0
	1 0
	2 0
	3 0
	4 0
	5 0
	6 0
	7 0
	8 0
	9 0
	0
	1 0
	2 0
	3 0
	4 0
	5 0
	6 0
	7 0
	8 0
	9 0
	0
	1 0
	2 0
	3 0
	4 0
	5 0
	6 0
	7 0
	8 0
	9 0
	0
	1 0
	2 0
	3 0

A.3.3 - Specimen No. 8: RCT2 "TICKET" - Round journey

(GV-MDI/ UIC)	Rund f a h r t e n																															
0	1	0	2	0	3	0	4	0	5	0	6	0	7	0																		
1	2	3	4	5	6	7	8	9	0	1	2	3	4	5	6	7	8	9	0	1	2	3	4	5	6	7						
RCT2	0	1	0	2	0	3	0	4	0	5	0	6	0	7	0																	
ATB2	1	2	3	4	5	6	7	8	9	0	1	2	3	4	5	6	7	8	9	0	1	2	3	4	5	6	7	8	9	0	1	2
1	A	T I C K E T																														
2	B	C I V 0 0 8 5 A G																														
3	C	V A L I D : 0 1 . 0 1 . 2 0 0 5 - 2 8 . 0 2 . 2 0 0 5																														
4	D	DATE FROM TIME TO																														
5	E	* * * * *																														
6	F	* * * * *																														
7	G	* * * * *																														
8	H	* * * * *																														
9	I	V I A - - - > < 1 1 8 5 > O L T E N * B A S E L B A D B F < 1 0 8 0 > O F F E N B U R G * K A R L S R U H E * * * * *																														
10	J	V I A < - - - < 1 0 8 0 > S C H A F F H A U S E N < 1 1 8 5 > (E G L I S A U / W I N T E R T H U R) * Z Ü R I C H * * * * *																														
11	K	R A I L C A R I D																														
12	L																															
13	M																															
14	N																															
15	O																															
16	P																															
17	Q																															
18	R																															

- ☐ = Logo / Name des Trägers des Fahrscheins
- ☐ = Positionen sind im UIC-MB 918 als "Leer" bezeichnet
- ☐ = orange Feld für Stockkontrolle

A.5.2 - Specimen No. 11: RCT2 Type 2 "SUPPLEMENT"

(CIM-MDI/UIC)	0	1	0	2	0	3	0	4	0	5	0	6	0	7	0																		
	1	2	3	4	5	6	7	8	9	0	1	2	3	4	5	6	7	8	9	0	1	2	3	4	5	6	7	0					
	RCT2	0	1	0	2	0	3	0	4	0	5	0	6	0	7	0																	
	ANTE2	1	2	3	4	5	6	7	8	9	0	1	2	3	4	5	6	7	8	9	0	1	2	3	4	5	6	7	8	9	0	1	2
1	A	ZUSCHLAG SUPPLEMENT																															
2	B	MEIER SABINE																															
3	C	01 KI ND																															
4	D	01 . 01 . 2000 - 29 . 02 . 2000																															
5	E	→ NACH																															
6	F	→ *																															
7	G	→ *																															
8	H	→ *																															
9	I	* * *																															
10	J	DEUTSCHLAND																															
11	K	I C / E C - ZUSCHLAG DB																															
12	L																																
13	M																																
14	N																																
15	O																																
16	P																																
17	Q																																
18	R																																

□ = Logo / Name des Trägers des Fahrscheins
 = Positionen sind im UIC-MB 918 als "Leer" bezeichnet
 = orange Feld für Stockkontrolle

A.10 - Conditions of issue for the RCT2 "Charter" document

For the "Charter" ticket, RUs may adopt the specimen No. 16 (see point A.9).

For the "Countermark", RUs may adopt the specimen No. 18 (see point A.1 1.1.2).

For charter reservation(s), RUs may adopt the specimen No. 9 (see point A.4) for individual passengers as explained in point 2.4.1. However, 3 digits are to be foreseen for the seat total.

A.14.5 - Eurail one country Pass

A.14.5.1 - Specimen No. 37: RCT2 Eurail one country Pass

(CIV-MDI / UIC)		0	1	0	2	0	3	0	4	0	5	0	6	0	7	0
1	2	3	4	5	6	7	8	9	0	1	2	3	4	5	6	7
0	1	0	2	0	3	0	4	0	5	0	6	0	7	0	8	0
RCT2	0	1	0	2	0	3	0	4	0	5	0	6	0	7	0	8
ATB2	1	2	3	4	5	6	7	8	9	0	1	2	3	4	5	6
1	A															
2	B															
3	C															
4	D															
5	E															
6	F															
7	G															
8	H															
9	I															
10	J															
11	K															
12	L															
13	M															
14	N															
15	O															
16	P															
17	Q															
18	R															

EURAIL PASS										FULL NAME:									
02.04.2007 - 01.06.2007										EDISTROM KARL									
FROM → TO										SOUTH KOREA									
EURAIL ROMANIA PASS										123456789012									
05 DAYS/02 MONTHS										DATE									
1. 2. 3. 4. 5.										TIME									
DAY: ... / ... / ... / ... / ... /										CLASS									
MONTH: ... / ... / ... / ... / ... /										1									
VALID: CFR										*									
SENIOR										*									
ONLY VALID WITH COVER AND PASSPORT										*									
										PAGE: 1 / 1									

	= Logo / Name of the Carrier of the Ticket
	= These positions are "Empty" in the UIC-MB 918
	= Orange Field for Stock Control

A.15 - Travel Voucher for compensation

A.15.1 - Specimen No. 42: RCT2 "Travel voucher" - version 1

(CIV-MDI / UIC)	
0	1 0
1	2 0
2	3 0
3	4 0
4	5 0
5	6 0
6	7 0
7	8 0
8	9 0
9	0
RCT2	1 0
ATB2	2 0
	3 0
	4 0
	5 0
	6 0
	7 0
	8 0
	9 0
	0
1	2
2	3
3	4
4	5
5	6
6	7
7	8
8	9
9	0
10	1
11	2
12	3
13	4
14	5
15	6
16	7
17	8
18	9
	0
	1
	2
	3
	4
	5
	6
	7
	8
	9
	0
	1
	2
	3
	4
	5
	6
	7
	8
	9
	0
	1
	2
	3
	4
	5
	6
	7
	8
	9
	0
	1
	2
	3
	4
	5
	6
	7
	8
	9
	0
	1
	2
	3
	4
	5
	6
	7
	8
	9
	0
	1
	2
	3
	4
	5
	6
	7
	8
	9
	0
	1
	2
	3
	4
	5
	6
	7
	8
	9
	0
	1
	2
	3
	4
	5
	6
	7
	8
	9
	0
	1
	2
	3
	4
	5
	6
	7
	8
	9
	0
	1
	2
	3
	4
	5
	6
	7
	8
	9
	0
	1
	2
	3
	4
	5
	6
	7
	8
	9
	0
	1
	2
	3
	4
	5
	6
	7
	8
	9
	0
	1
	2
	3
	4
	5
	6
	7
	8
	9
	0
	1
	2
	3
	4
	5
	6
	7
	8
	9
	0
	1
	2
	3
	4
	5
	6
	7
	8
	9
	0
	1
	2
	3
	4
	5
	6
	7
	8
	9
	0
	1
	2
	3
	4
	5
	6
	7
	8
	9
	0
	1
	2
	3
	4
	5
	6
	7
	8
	9
	0
	1
	2
	3
	4
	5
	6
	7
	8
	9
	0
	1
	2
	3
	4
	5
	6
	7
	8
	9
	0
	1
	2
	3
	4
	5
	6
	7
	8
	9
	0
	1
	2
	3
	4
	5
	6
	7
	8
	9
	0
	1
	2
	3
	4
	5
	6
	7
	8
	9
	0
	1
	2
	3
	4
	5
	6
	7
	8
	9
	0
	1
	2
	3
	4
	5
	6
	7
	8
	9
	0
	1
	2
	3
	4
	5
	6
	7
	8
	9
	0
	1
	2
	3
	4
	5
	6
	7
	8
	9
	0
	1
	2
	3
	4
	5
	6
	7
	8
	9
	0
	1
	2
	3
	4
	5
	6
	7
	8
	9
	0
	1
	2
	3
	4
	5
	6
	7
	8
	9
	0
	1
	2
	3
	4
	5
	6
	7
	8
	9
	0
	1
	2
	3
	4
	5
	6
	7
	8
	9
	0
	1
	2
	3
	4
	5
	6
	7
	8
	9
	0
	1
	2
	3
	4
	5
	6
	7
	8
	9
	0
	1
	2
	3
	4
	5
	6
	7
	8
	9
	0
	1
	2
	3
	4
	5
	6
	7
	8
	9
	0
	1
	2
	3
	4
	5
	6
	7
	8
	9
	0
	1
	2
	3
	4
	5
	6
	7
	8
	9
	0
	1
	2
	3
	4
	5
	6
	7
	8
	9
	0
	1
	2
	3
	4
	5
	6
	7
	8
	9
	0
	1
	2
	3
	4
	5
	6
	7
	8
	9
	0
	1
	2
	3
	4
	5
	6
	7
	8
	9
	0
	1
	2
	3
	4
	5
	6
	7
	8
	9
	0
	1
	2
	3
	4
	5
	6
	7
	8
	9
	0
	1
	2
	3
	4
	5
	6
	7
	8
	9
	0
	1
	2
	3
	4
	5
	6
	7
	8
	9
	0
	1
	2
	3
	4
	5
	6
	7
	8
	9
	0
	1
	2
	3
	4
	5
	6
	7
	8
	9
	0
	1
	2
	3
	4
	5
	6
	7
	8
	9
	0
	1
	2
	3
	4
	5
	6
	7
	8
	9
	0
	1
	2
	3
	4
	5
	6
	7
	8
	9
	0
	1
	2
	3
	4
	5
	6
	7
	8
	9
	0
	1
	2
	3
	4
	5
	6
	7
	8
	9
	0
	1
	2
	3
	4
	5
	6
	7
	8
	9
	0
	1
	2
	3
	4
	5
	6
	7
	8
	9
	0
	1
	2
	3
	4
	5
	6
	7
	8
	9
	0
	1
	2
	3
	4
	5
	6
	7
	8
	9
	0
	1
	2
	3
	4
	5
	6
	7
	8
	9
	0
	1
	2
	3
	4
	5
	6
	7
	8
	9
	0
	1
	2

A.15.2 - Specimen No. 43: RCT2 "Travel voucher" - version 2

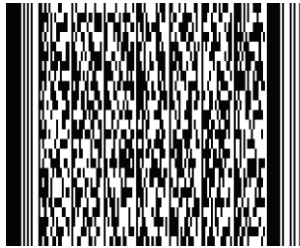
(CIV-MDI / UIC)																																							
0		1	0			2	0			3	0			4	0			5	0			6	0			7	0												
1	2	3	4	5	6	7	8	9	0	1	2	3	4	5	6	7	8	9	0	1	2	3	4	5	6	7	8	9	0	1	2	3	4	5	6	7			
RCT2		0		1		0		2		0		3		0		4		0		5		0		6		0		7		0		8		0		9			
ATB2		1		2		3		4		5		6		7		8		9		0		1		2		3		4		5		6		7		8		9	
1	A	H	REI SEGUTSCHEIN																																				
2	B	E	BON DE VOYAGE / BUONO DI VIAGGIO																																				
3	C	F	VOUCHER																																				
4	D	F	GÜLTIG BIS: 22.04.2004																																				
5	E	T	VON → NACH																																				
6	F	R	PI * * *																																				
7	G	A	PI * * *																																				
8	H	N	PI * * *																																				
9	I	D	Ei nl ö sungsbedi ngungen in der (den) Landessprache(n)																																				
10	J		Ei nl ö sungsbedi ngungen in engl ischer Sprache																																				
11	K		Beför derer/TRANSPORTEURS/CARRI ERS:																																				
12	L	 / / / / / /																																				
13	M	 / / / / / /																																				
14	N	 / / / / / /																																				
15	O	 / / / / / /																																				
16	P	 / / / / / /																																				
17	Q	 / / / / / /																																				
18	R	 / / / / / /																																				
<div style="display: flex; justify-content: space-between;"> <div> <p>☐ = Logo /Name des Trägers des Fahrscheins und Bahncode</p> <p>☐ = Positionen sind im UIC-MB 918 €</p> <p>☐ = orange Feld für Stockkontrollē</p> </div> <div> <p>MUSTERMANN KARL</p> <p>SCHWEI Z</p> <p>DATUM</p> <p>PI * * *</p> <p>ZEIT</p> <p>PI * * *</p> <p>KLASSE</p> <p>* * *</p> </div> </div>																																							

Appendix B - Specimen Travel Documents RCT2 compressed standard

B.1 - General characteristics of RCT2 compressed standard

B.1.1 - 2D Barcodes

PDF417



AZTEC



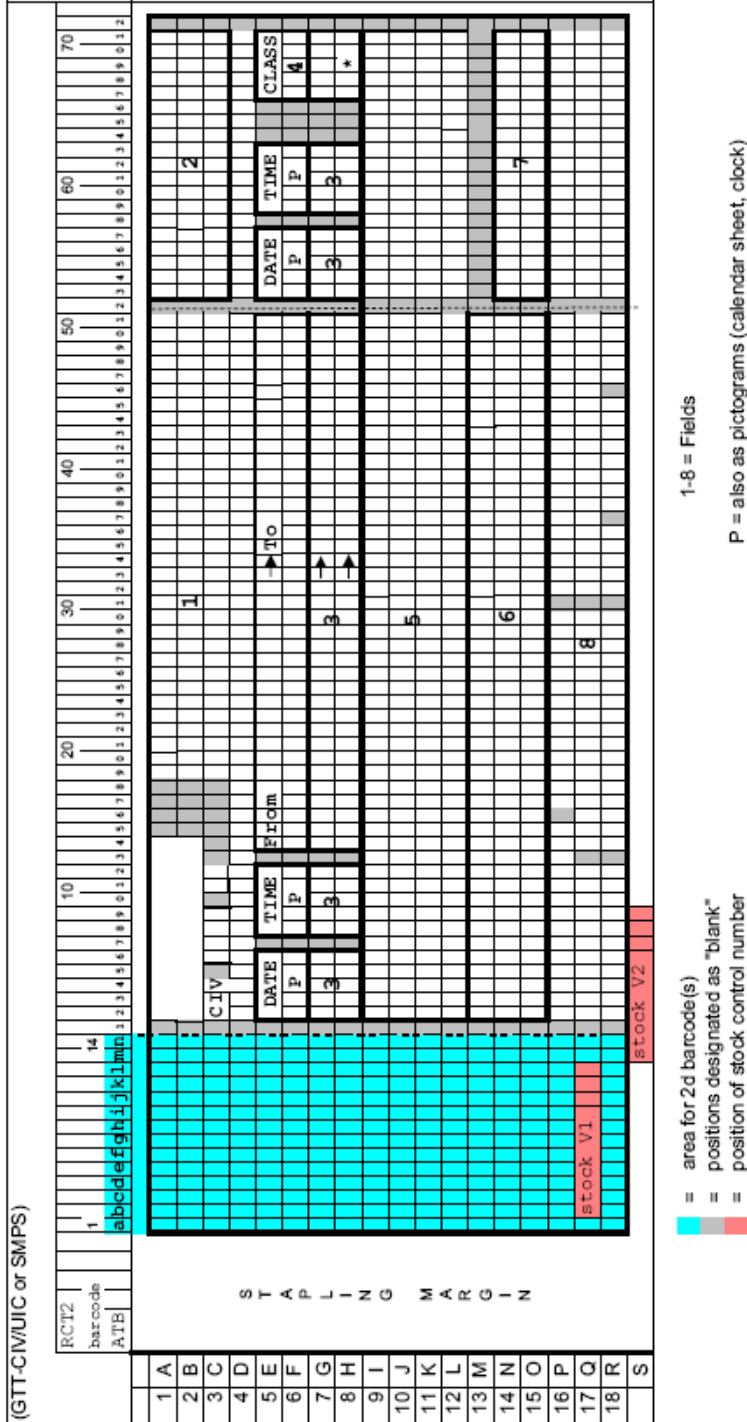
B.1.2 - 1 D Barcode



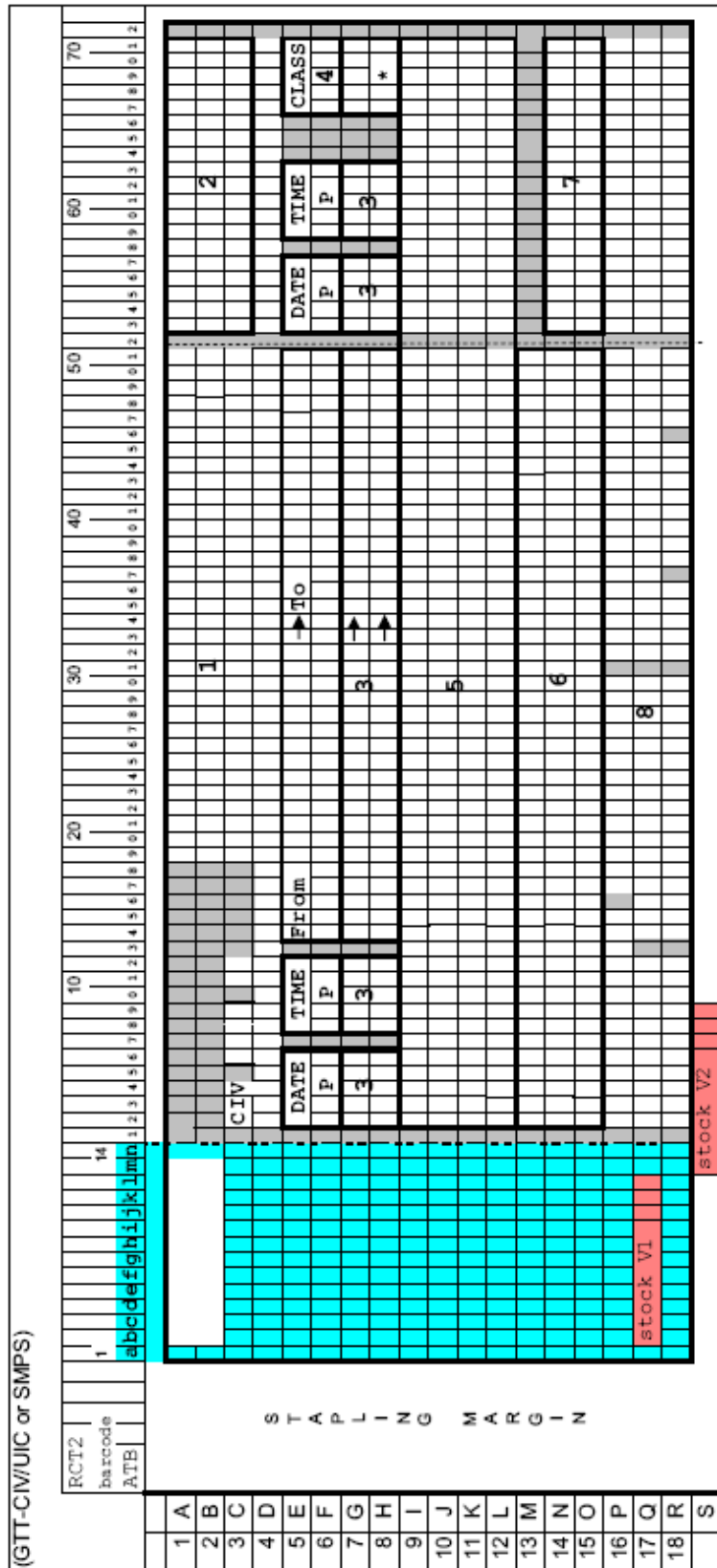
For technical details regarding the barcode generation, see Appendix C.

B.2 - Specimen grids indicating Fields, Rows and Columns

B.2.1 - Specimen n° 1: Issuing Railway logo on RCT2 part

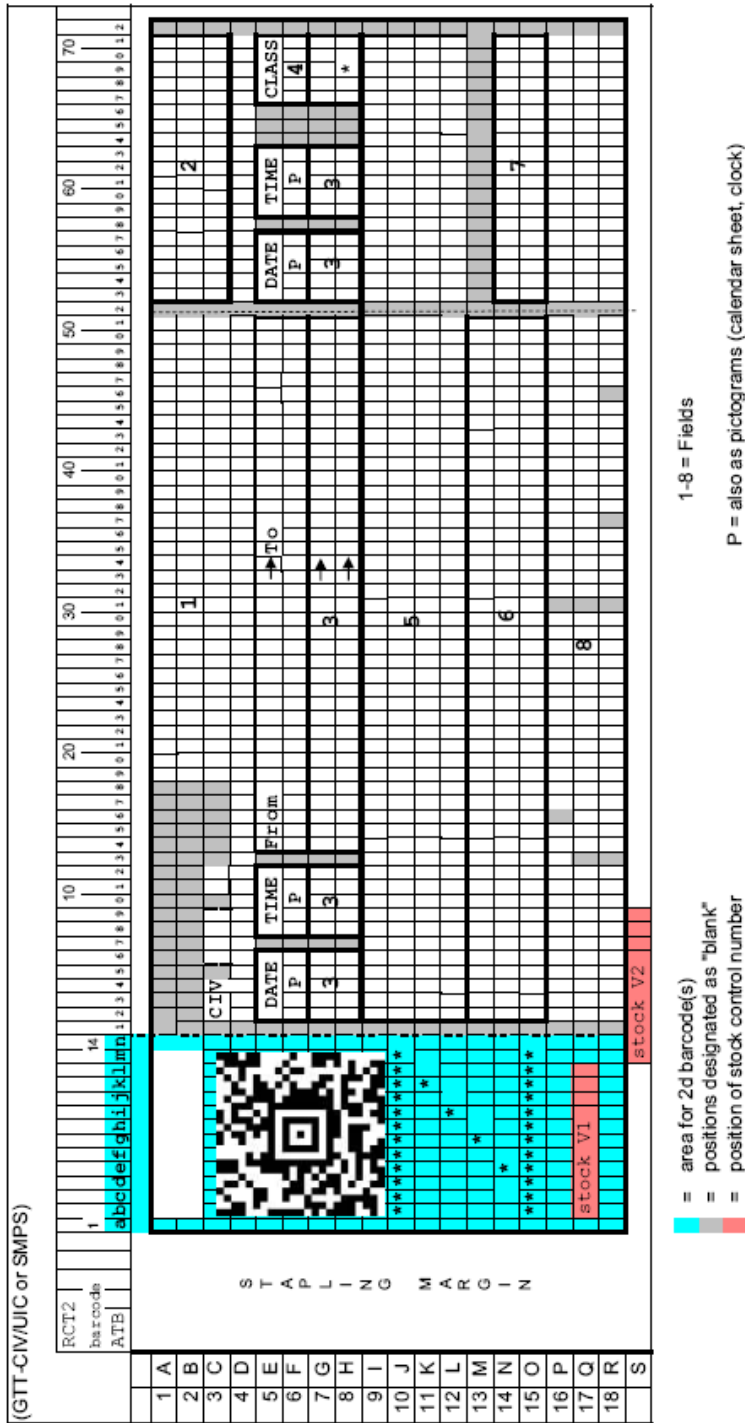


B.2.2 - Specimen n° 2: Issuing Railway logo on 2D barcode part




- = area for 2d barcode(s)
 - = positions designated as "blank"
 - = position of stock control number
- 1-8 = Fields
P = also as pictograms (calendar sheet, clock)

B.2.3 - Specimen n° 3: Issuing Railway logo on 2D barcode part - Solution 1 (one Aztec 2D barcode)





B.3 - Ticket document samples

B.3.1 - Specimen n° 6: RCT2 compressed "TICKET"

(GTT-CMUIC or SMPS)		RCT2 barcode		ATE		14		10		20		30		40		50		60		70	
1	A	1	abc	2	def	3	ghi	4	ijkl	5	mnop	6	qrst	7	uvwx	8	yz01	9	2345	10	6789
2	B																				
3	C	TRENTALIA CIV 0083 Validity: 01/10/2007 - 31/12/2007 TICKET DATE TIME FROM TO P Milano Centrale → Bergamo VIA 0083+Verona P.M.+San Candido/Inni.+1181+Bag Ostein+zell/see+Field Kirch+ 01 Normal Tariff ROMA TERMINI XX1234567 070807 14.19 0.628-IT																			
4	D	DE PIERI RENATO 01 ADULT(S) DATE TIME CLASS P P EUR ++97.80 P. IVA: 05403151003 1592581																			
5	E	S T A P L I N G M A R G I N 1-8 = Fields P = also as pictograms (calendar sheet, clock)																			

B.3.2 - Specimen n° 7: RCT2 compressed "TICKET + RESERVATION"

(GTT-CIVILIC or SMPS) RCT2 (see road)		1		10		20		30		40		50		60		70	
		ATB		1		10		20		30		40		50		60	
1	A	a b c d e f g h i j k l m n o p q r s t u v w x y z 0 1 2 3 4 5 6 7 8 9 *															
2	B																
3	C																
4	D	S T A P L I N G M A R G I N															
5	E	CIV 1187															
6	F	ENREGISTREMENT AU PLUS TARD 30 MINUTES AVANT LE DEPART															
7	G	DEPART															
8	H	23/03 11H43 PARIS Nord															
9	I	TRAIN 9005 ES VOITURE 05 PLACE ASSISE 16															
10	J	SALLE NON FUMEUR 01COULOIR															
11	K	ECHANGEBLE/REMBOURSABLE															
12	L	STANDARD FLEXI															
13	M	TRANSPORTEURS															
14	N	1187 0019															
15	O	PRICE EUR **240.00															
16	P	P A R I S L Y O N A															
17	Q	230206 15H21															
18	R	00LQ0Z															
	S	Page 1 / 1															

1-3 = Fields
 P = also as pictograms (calendar sheet, clock)

= area for 2d barcode(s)
 = positions designated as "blank"
 = position of stock control number

Appendix C - Barcode generation

C.1 - 2D barcode - AZTEC

C.1.1 - Step 1: collect all the elements needed in the barcode in the right format

↓ : Element number

↓ : Element description + how to use this element in the barcode

NEW	Version number Up to 16 different versions of the standard can co-exist. Suggested type - size: Numerical 0..15 Suggested bit size: 4
177	Issuing railway code This code is also used to retrieve the correct public key (for decryption) Actual type: Numerical Actual size: 4 Suggested type-size: Numerical 0..9999 Suggested bit size: 14 Translation: Integer <> Binary
242	RCT2 type indicator 1= single segment, 2=bi-segment Actual type: Numerical Actual size: 1 Suggested type-size: Numerical, only 2 values Suggested bit size: 1 Translation: "1" <> Binary "0"; "2" <> Binary "1" Old value - 1, convert to binary Binary value, convert to decimal + 1
200	Number of ticket (if multiple tickets) Blank or total number of tickets. Ticket number for serial linkage + total number of tickets e.g. "12"= first ticket out of 2 Actual type: Numerical Actual size: 2 Suggested type-size: Numerical 00..99, translated in numerical 1. .45 (special encoding is used, as the first digit must always be less than or equal to the second one). Suggested bit size: 6 Translation algorithm: First, the following table is defined:

(1)	1	1
(2)	1	2
(3)	2	2
(4)	1	3
(5)	2	3
(6)	3	3
(7)	1	4
(8)	2	4

(9)	3	4
(10)	4	4
(11)	1	5

(42)	6	9
(43)	7	9
(44)	8	9
(45)	9	9

To find the sequence number (43), corresponding to e.g. 7 9, the following algorithm can be used: (a=7, b=9)

$$\text{num} = b * (b-1) / 2 + a$$

In this example: $\text{num} = 9*8/2+7 = 43$

Translation in the other direction can be done this way (the sequence number is given (43) and the corresponding numbers (7 and 9) have to be found:

```
num=43
b = 0
Do While (num - b) > 1
    b = b + 1
    num = num - b
Loop
a = num
b = b + 1
```

In this example, the values of b and num will be in the different sequences: 0/43,1/42,2/40,3/37,4/33,5/28,6/22,7/15,8/7, so a=7, b=9.

- 137 Number of adult passengers
Actual type: Numerical
Actual size: 2
Suggested type-size: Numerical 0..99
Suggested bit size: 7
Translation: Integer <> Binary
- 138 Number of child passengers
Actual type: Numerical
Actual size: 2
Suggested type-size: Numerical 0..99
Suggested bit size: 7
Translation: Integer <> Binary
- 142 First day of validity
Blank or Julian number (001 to 366) for first day of validity
Actual type: Numerical
Actual size: 3
Suggested type-size: Numerical 0. .366
Suggested bit size: 9
Translation: Integer <> Binary

- 143 Last day of validity
 Blank or Julian number (001 to 366) for last day of validity
 Actual type: Numerical
 Actual size: 3
 Suggested type-size: Numerical 0..366
 Suggested bit size: 9
 Translation: Integer <> Binary
- 243 "Corporate" frequent
 Blank or "customer number"
 Actual type: Numerical
 Actual size: 14
 Suggested type-size: 1 bit (see element 171) + Numerical 14 digits
 Suggested bit size: 48
 Translation: bit1 = 0 + Integer <> Binary
- 171 "Individual" frequent
 Blank or "customer number"
 Actual type: Numerical
 Actual size: 14
 Suggested type-size: 1 bit (see element 243) + Numerical 14 digits
 Suggested bit size: 48
 Translation: bit1 = 1 + Integer <> Binary
- 145 Departure station
 Actual type: Numerical or Alphanumeric
 Actual size: 7(N) or 5(A)
 Suggested type-size: 1 bit (A) + 5 chars (= 5 * 6 bit)
 -or- 1 bit (N) + 7 digits (0000000 .. 9999999) (= 20 bit)
 (the first bit "0" indicates Alphanumeric, the first bit "1" indicates Numerical)
 Suggested bit size: 31 bit (the biggest = alphanumeric)
 Translation: - Alphanumeric: bit1 = 0 + 5 * 6 bit
 + Translation from alphanumeric to 6 bit:
- | | |
|-----|-----|
| 0 | 0 |
| 1 | 1 |
| 2 | 2 |
| ... | ... |
| 9 | 9 |
| A | 10 |
| B | 11 |
| ... | ... |
| Z | 36 |
- Numerical: bit1 = 1 + 20 bit, rest: "0"
- 146 Arrival Station (see element 145)
 Suggested type-size: 1 bit (A) + 5 chars (= 5 * 6 bit)
 -or- 1 bit (N) + 7 digits (0000000 .. 9999999) (= 20 bit)
 Suggested bit size: 31 bit (the biggest = alphanumeric)
- 147 Departure date

Blank or Julian number (001 to 366) for departure date

Actual type: Numerical

Actual size: 3

Suggested type-size: Numerical 0..366

Suggested bit size: 0 - see element 142 which will be used for such a ticket

148

Departure time (*)

Blank or 4-digit numerical from 0000 to 2359

Actual type: Numerical

Actual size: 3

Suggested type-size: 48 slots of 30 minutes

Suggested bit size: 6

Translation: 00:00 to 00:29: timeslot 1

00:30 to 00:59: timeslot 2

01:00 to 01:29: timeslot 3

...

If the timeslot-number is 0, than the departure date / departure time is not used, which means that element 142 is not used as a departure date, but as a "first date of validity" for an open ticket.

(*) This is a restriction: not the exact time is stored, but a "time slot".

149

Train number

Actual type: Alphanumeric

Actual size: 5

Suggested type: Numerical (*)

Suggested size: 5 (00000..99999)

Suggested bit size: 17

(*) This means that there is a restriction for the train numbers to encode only the numerical fields

206

Reservation reference

Blank or 12 num with no blank spaces

Actual type: Numerical

Actual size: 12

Suggested type-size: num (000000000000 .. 999999999999)

Suggested bit size: 40

215

Class of travel

Blank or "1", "2", "P", "C" or "T"

Actual type: Alphanumeric

Actual size: 1

Suggested type: 64 possible options (a letter or a number)

Suggested bit size: 6

Translation: 0 0

1 1

2 2

... ...

9 9

A 10

B 11

... ...

Z 36

- 151 Coach number
Blank or from "001" to "999"
Actual type: Alphanumeric
Actual size: 3
Suggested type: Numerical (000 .. 999)
Suggested bit size: 10
- 153 Seat / berth number
Blank or 3 num or 2 num + 1 alpha
Actual type: Alphanumeric
Actual size: 3
Suggested type: 2 Numerical (00 .. 99) + 1 character (*)
Suggested bit size: 7 + 6 = 13
- (*) limitation: seat/berth number is only 1 alpha and 2 num
- 154 Overbooking indicator
"0"= not overbooked, "1"=overbooked
Actual type: Numerical
Actual size: 1
Suggested type: binary
Suggested bit size: 1
- 219 Issuer's Passenger Name Record (PNR)
Actual type: Alphanumeric
Actual size: 7
Suggested type: 7 character
Suggested bit size: 42
- 196 Ticket type
Can be IV,IR,BP,IQ,IM,IO,IP,IK or IT
Actual type: Alphanumeric
Actual size: 2
Suggested type: lookup of 16 options
Suggested bit size: 4
- | | | |
|--------------|----|---|
| Translation: | IV | 1 |
| | IR | 2 |
| | BP | 3 |
| | IQ | 4 |
| | IM | 5 |
| | IO | 6 |
| | IP | 7 |
| | IK | 8 |
| | IT | 9 |
- 198 "Specimen" code
"0"=test ticket, "1"=operational ticket
Actual type: Alphanumeric
Actual size: 1
Suggested type: binary
Suggested bit size: 1
- NEW Via Stations
First letter of max. 6 via stations (if less via stations: Blanc (space))
Suggested type: Binary (5 bit per station)
Suggested total bit size: 30 bit

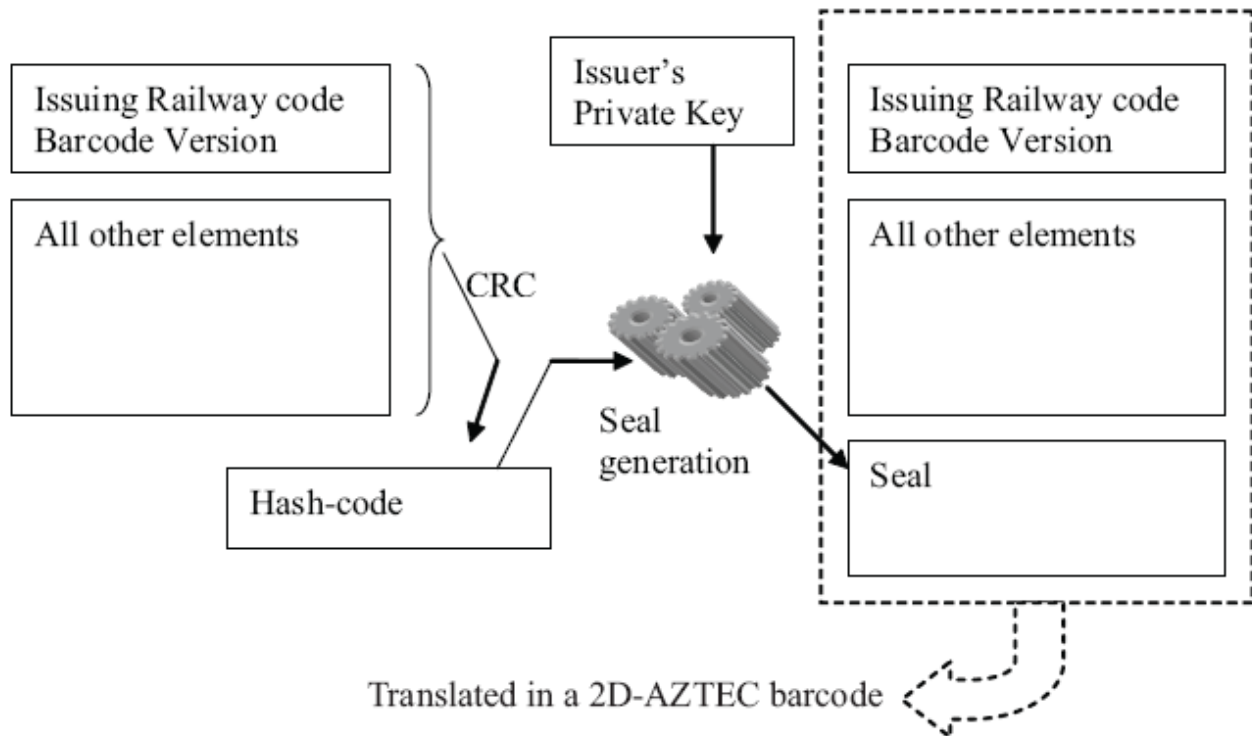
C.1.2 - Hash Code generation

The CRC-32 mechanism is used to generate a hash-code. The divider is: 100000100110000010001110110110111 (104C11DB7 Hex or 4374732215 Dec).

An RSA-asymmetric encryption mechanism is used to encrypt the hash-code. To generate a seal from the hash-code (or: "to encrypt the hash-code"), a distributor uses his private (secret) key.

For the verification, a railway undertaker, wanting to interpret the information in the seal, should know which public key to use. For this, the element 177 - "Issuing railway code" is used.

The key pairs (secret key for the encryption by the distributor, public key for the decryption by the TCO) are chosen by the distributor. The distributor gives the public key to the TCO in advance, so that he can check tickets with a hash-code that is encrypted with the corresponding private key. It is strongly recommended to change the key pairs frequently. The size of the keys is 512 bits, so that the hash-code (32 bits long) will become, after encryption a seal of maximum 544 bits long.



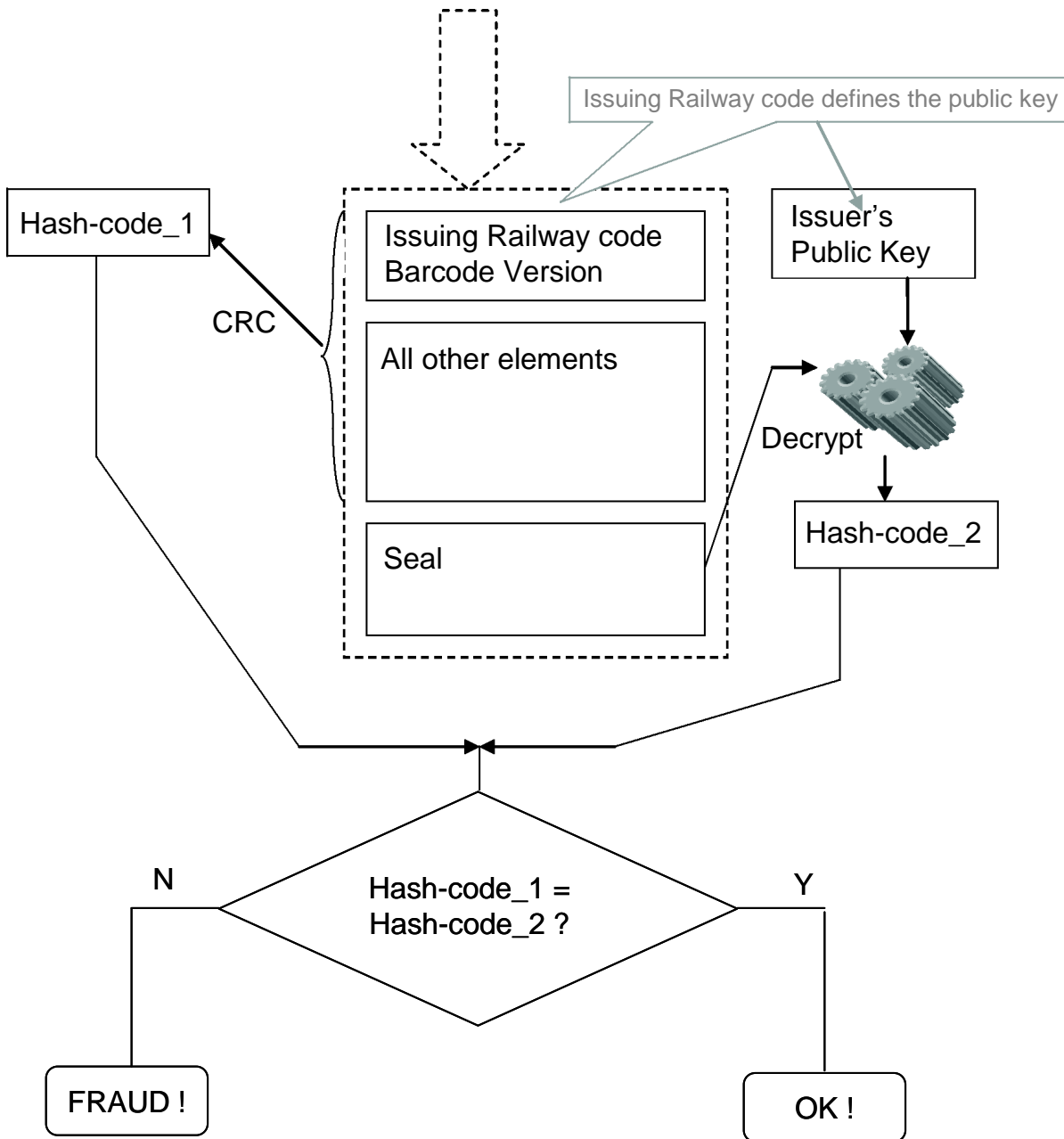


Fig. 2 - Schematic presentation of the decryption of the seal verification

European Railway Agency

ERA/TD/2009-09/INT: ANNEX B.6 of TAP TSI

Table 1 : Bitsize after seal generation

Element	Element_description	Suggested Type	Bits	Bytes
Barcode Version	Version number cyclic (max 16)	Num (0.. 15)	4	0,5
177	Issuing railway code	Num (<=9999)	14	1,75
242	RCT2 type indicator	Bit	1	0,125
200	Number of ticket (if multiple tickets)	Num<1 00	6	0,75
137	Number of adult passengers	Num (<100)	7	0,875
138	Number of child passengers	Num (<100)	7	0,875
142	First day of validity	Num (<367)	9	1,125
143	Last day of validity	Num (<367)	9	1,125
243	"Corporate" frequent	Bit Flag + 14 Num	48	6
171	Individual frequent	N/A	0	0
145	Departure station	Bit Flag for Alpha or Num + x Characters	31	3,875
146	Arrival station	Bit Flag for Alpha or Num + x Characters	31	3,875
147	Departure date			0
148	Departure Time	6 bits for 48 slots	6	0,75
149	Train number	Num (<=99999)	17	2,125
206	Reservation reference	Num (<=999999999999)	40	5
215	Class of travel	Lookup of 64 options	6	0,75
151	Coach number	Num (<=999)	10	1,25
153	Seat/berth number	2 Num + 1 Character	13	1,625
154	Overbooking indicator	Bit Flag	1	0,125
219	Issuer's PNR number	7 Chars	42	5,25
196	Ticket type	Lookup of 16 options	4	0,5
198	"specimen" code	Bit Flag	1	0,125
VIA	VIA STATIONS - first letters (max 6 via)	6 alpha's	30	3,75
Total Data			337	42,125
Hash-code			32	4
Digital Seal			512	64
Total including seal			881	110,125

The total size of the barcode: 111 bytes of data.

C.1.3 - Encoding in an AZTEC 2D barcode

This data is translated into a 6-layer AZTEC barcode (symbol size of 41x41).

The surface of the barcode is 24mm x24mm - representing 41 dots x 41 dots.

Every pixel measures 0,59 mm x 0,59 mm

Printing resolution: minimum 150 dpi (average of 12 printer-pixels per barcode-dot).

Error correction must be at least 23 % using the standard AZTEC error correction mechanism.

C.2 - 2D barcode - PDF-417

C.2.1 - Step 1: Collecting the elements for the barcode (alphanumerical format)

A list of all the elements to be integrated in the PDF-417 barcode:

(All elements are in **Alphanumerical** format (A. .Z,0. .9))

	Element_name	Size	Element_Description
Decoding Info	ID_format	1	Defines type of barcode/ticket/key etc... - Default value="e"
	Code pectab	1	Code, used for ATB-printers - Default value="R"
	Ticket code	2	Code, indicating what kind of ticket is in the barcode
	PNRReference of the booking	6	
	TCN-code	9	Issue booking number
	Specimen-flag	1	1=real ticket, 0=specimen
	Barcode Version		For decryption purposes - which elements can be found
	Number	1	where in which format
	Sequence number	2	xy: ticket x out of y tickets
	Non-used digits	10	for future use
Ticket Info	Traveler type	2	frequent traveler / ...
	Number of adults	2	00 - 99
	Number of childs	2	00 - 99
	Year (last digit)	1	e.g. 2007 -> '7'
	Emission day	3	Sequence number (1/1=1, 2/1=2, ..)
	Begin validity day	3	Sequence number (1/1=1, 2/1=2, ..)
	End validity day	3	Sequence number (1/1=1, 2/1=2, ..)
Segment 1	Departure station	5	5 digit Alphanumerical encoding e.g. FRPNO
	Arrival station	5	5 digit Alphanumerical encoding
	Train number	6	6 characters (or 5 + 1 blanc)
	Security code	4	Specific code for a train - antifraud
	Departure date	3	Sequence number (1/1=1, 2/1=2, ...)
	Coach number	3	Alphanumerical - 3 digits
	Seat/bed number	3	Alphanumerical - 3 digits
	Class of travel	1	1 =first class, 2=second class
	Tariff code	4	4 blancs = full fare ticket
	Class of service	2	defining extra services or conditions (non exchangable, ...)

Segment 2	Departure station	5	5 digit Alphanumerical encoding e.g. FRPNO
	Arrival station	5	5 digit Alphanumerical encoding
	Train number	6	6 characters (or 5 + 1 blanc)
	Security code	4	Specific code for a train - antifraud
	Departure date	3	Sequence number (1/1=1, 2/1=2, ...)
	Coach number	3	Alphanumerical - 3 digits
	Seat/bed number	3	Alphanumerical - 3 digits
	Class of travel	1	1 =first class, 2=second class
	Tariff code	4	4 blancs = full fare ticket
	Class of service	2	defining extra services or conditions (non exchangable, ...)
TOTAL SIZE	85	(Characters) for a one-segment trip	
TOTAL SIZE	121	(Characters) for a two-segment trip	

C.2.2 - Step 2: Encoding in a PDF-417

The characters are put one next to the other to make one long word (85 or 121 characters long - depending on the fact if the ticket contains one or two segments).

This word is sent to the ATB-printer, together with some commands, specific for printing the barcode (element of the PECTAB-file). For this, consult the manual of the printer to have the sizes as defined in the standard.

C.3 - 1 D barcode in the "AZTEC"-zone

C.3.1 - Step 1 - Collecting all elements in binary format

Version number

Up to 16 different versions of the standard can co-exist.
Suggested type - size: Numerical 0..15
Bit size: 4 - Binary

Multiple tickets

0: Single ticket
1: Multiple tickets
This bit helps the after sales person or the on-board train staff by indicating that they have to pay attention.
Bit size: 1 - Binary

Multiple adults and/or children

0: Single person
1: Multiple persons
This bit helps the after sales person or the on-board train staff by indicating that they have to pay attention.
Bit size: 1 - Binary

Corporate/individual frequent

See elements 243 and 171 in the AZTEC elements list
Bit size: 48

Reservation Reference

See element 206 in the AZTEC elements list
Bit size: 40

Issuer's PNR

See element 219 in the AZTEC elements list
Bit size: 42

Ticket type

See element 196 in the AZTEC elements list
Bit size: 4

Future use

Bit size: 2

Overview:

Version Number	4
Bit indicating if multiple tickets	1
Bit indication multiple adults/children	1
Corporate/individual frequent	48
Reservation reference	40
Issuer's PNR	42
Ticket type	4
Future use	4
= Total bit size:	144

C.3.2 -Encoding in a 1 D-barcode

The 144 bits are split into 24 groups of 6 bit each.

Each series of 6 bit represents a value from 0 to 63, which are translated as described below:

Value	Symbol, to be converted in CODE 128 barcode
0	A
1	B
2	C
...	...
25	Z
26	a
27	b
28	c
...	...
51	z
52	0
53	1
...	...
61	9
62	&
63	#

After the translation, the result is a word of 24 symbols, that are converted in a CODE 128 barcode (directly, using PECTAB).

Next, these 24 "symbols" are transformed in a "CODE 128-B" barcode.

List of abbreviations

GTT-CIV	CIV Ticket Manual
PNR	Passenger Name Record
RU	Railway Undertaking
TCN	Ticket Control Number

Bibliography

1. ERA Technical Documents

European Rail Agency *TAP TSI Technical Document B.5: Electronic reservation of seats/berths and electronic production of travel documents - Exchange of messages*, 2nd edition, April 2010

2. International standards

International Rail Transport Committee (CIT) *GTT-CIV: CIV Ticket Manual*, July 2006

