



Shift2Rail, innovating ERTMS

**Control Command and Railway Communication Conference
16 November 2017, Valenciennes**

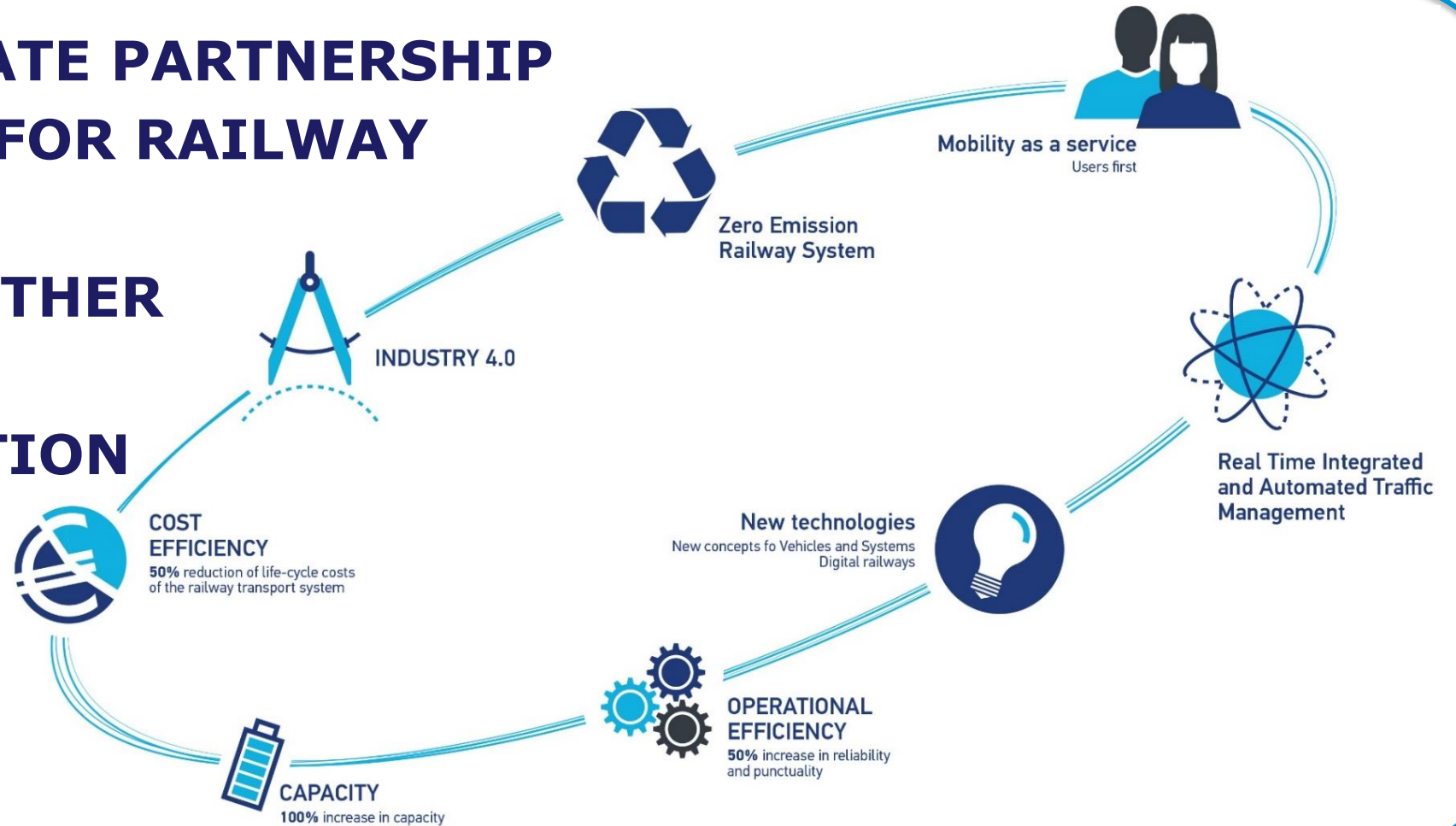
Giorgio Travaini, Head of Research & Innovation, S2R JU

A PUBLIC-PRIVATE PARTNERSHIP R&I PLATFORM FOR RAILWAY

WORKING TOGETHER

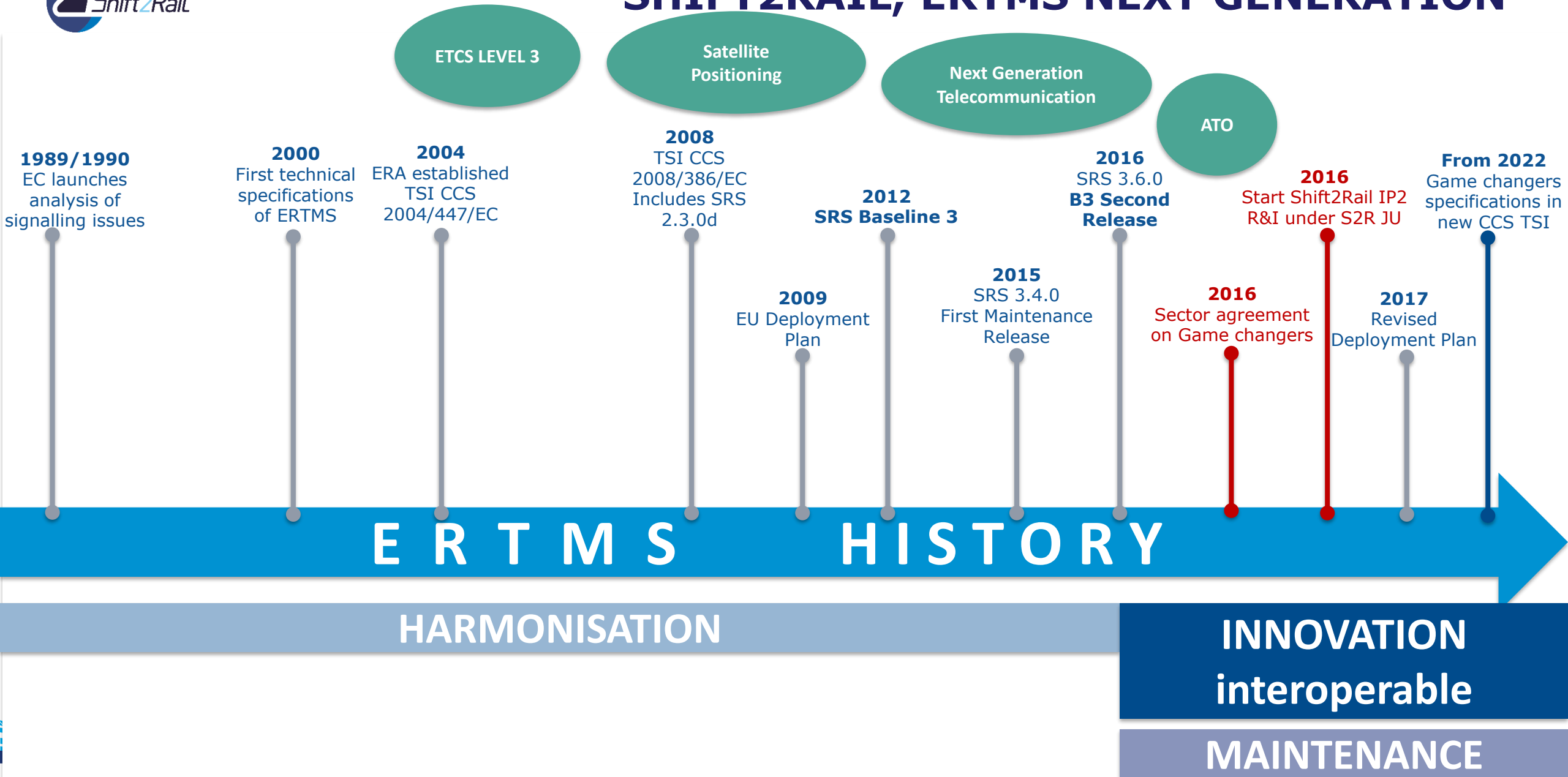
DRIVE INNOVATION

BY 2024





SHIFT2RAIL, ERTMS NEXT GENERATION



EUROPEAN COMMISSION – STRATEGIC GUIDANCE

REQUIREMENTS / SPECIFICATIONS

S2R R&I ACTIVITIES

S2R DEMONSTRATIONS

*Sector commitment
& multi-modality view*

COLLABORATION AT S2R PROJECT LEVEL

REVIEW OF S2R SPECIFICATIONS
(ERTMS SYSTEM AUTHORITY)

INTEGRATION OF S2R SPECIFICATIONS
INTO CCS TSI (new TSI from 2022)

Synchronization with ERA

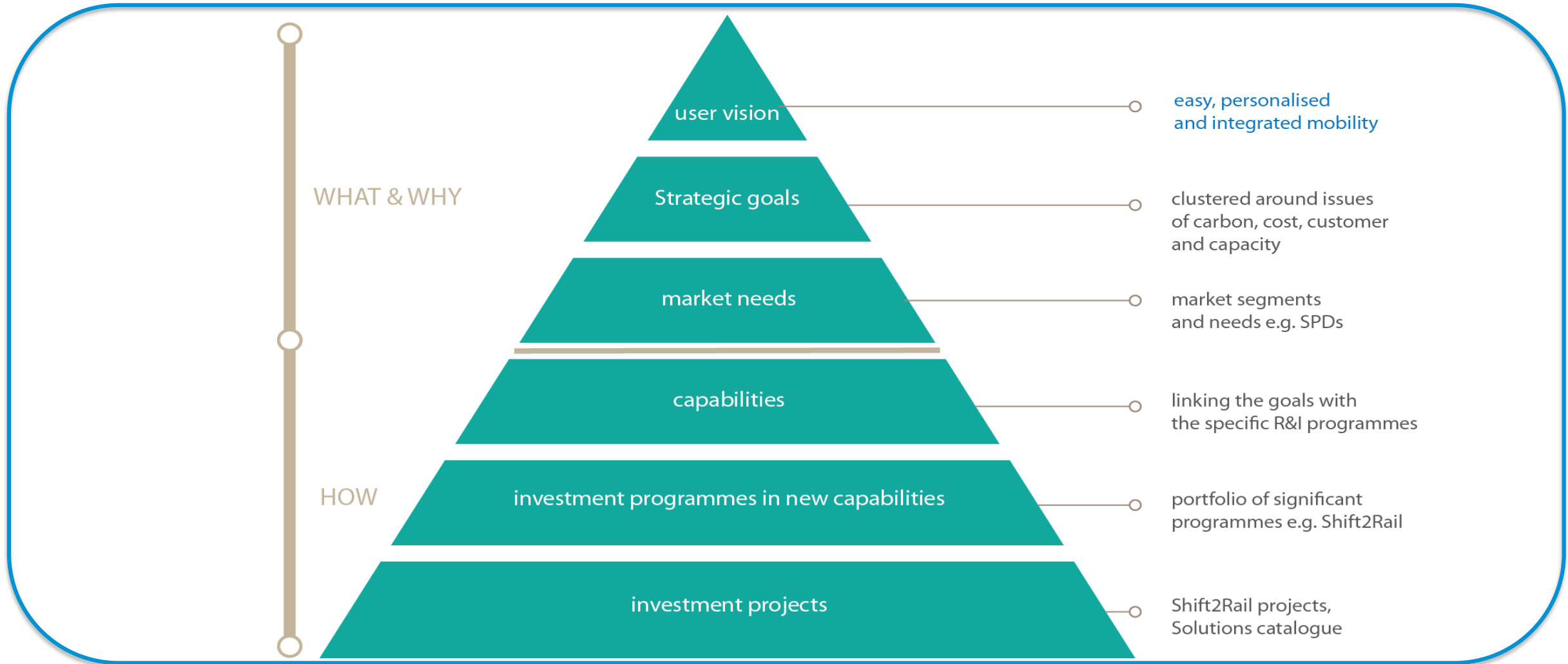
INVESTMENTS

MIGRATION

Coordinated deployment

USER FIRST: USER CENTRIC MOBILITY AS A SERVICE





...opening up new Capabilities coming from emerging technologies or concepts.

Looking into the future, rail must show the way!
- BE BOLD - THINK OUT OF THE BOX!

INTELLIGENT TRAINS

LOW COST RAILWAY

AUTOMATED TRAIN OPERATION

GUARANTEED ASSET HEALTH & AVAILABILITY

STATION & "SMART" CITY MOBILITY

MORE VALUE FROM DATA

**RAPID & RELIABLE R&I
DELIVERY**

LOGISTICS ON DEMAND

ENVIRONMENTAL & SOCIAL SUSTAINABILITY

SERVICE TIMED TO
THE SECOND

OPTIMUM ENERGY USE

MOBILITY AS A SERVICE



Thank you

Imagine, together we make it...

