

FRMCS Definition, Specification and Standardization Activities

ERA CCRCC 2019

Dan Mandoc, UIC FRMCS Project Manager

Future Railway Mobile Communication System Project

2

Three main work directions, to provide the baseline platform for the system definition and delivery:

- User Requirements
- System architecture, interfacing with track side and on-board equipment
- Frequency Spectrum

Provide an appropriate replacement to EIRENE FRS:

- Based on the User Requirements
- Investigate future needs and add new functionalities
- Technology independent
- Future Proof
- Application Layer approach
- Enabling Interoperability

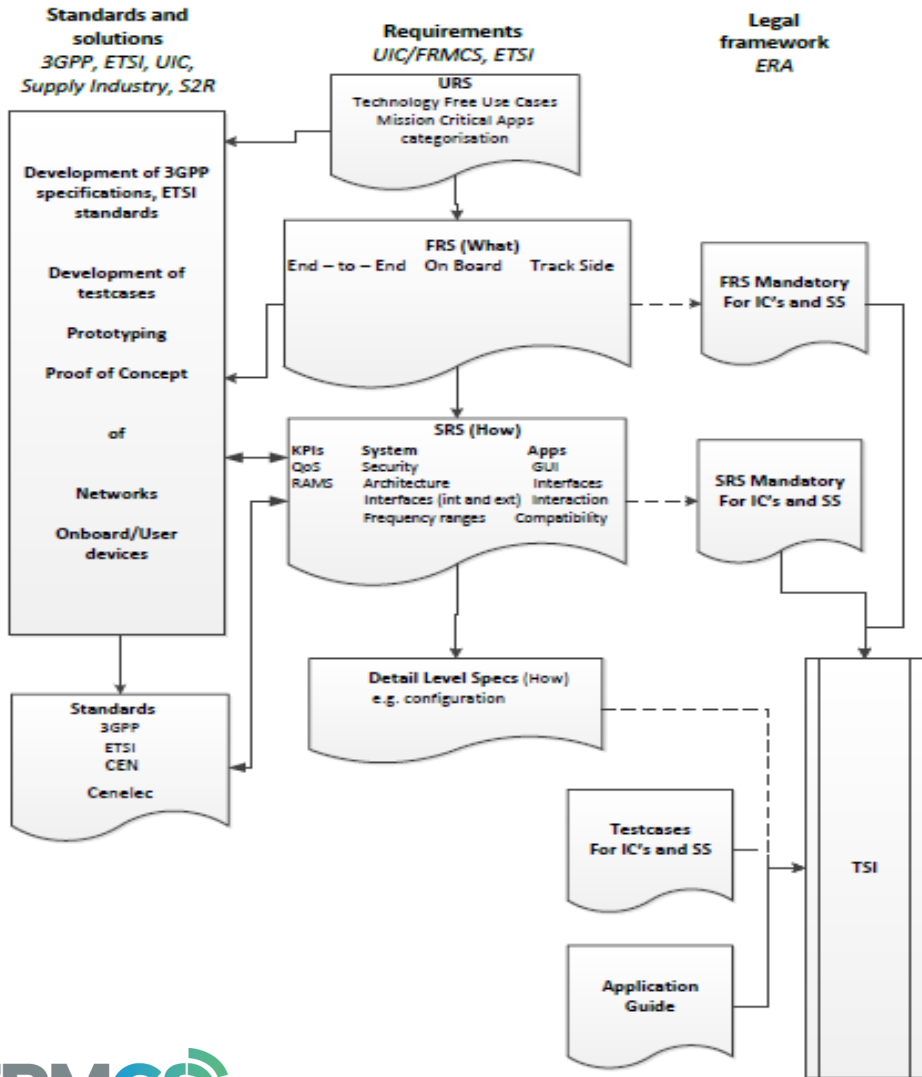
Provide an appropriate replacement for EIRENE SRS:

- Based on 3GPP and ETSI specifications
- Define building blocks and interfaces
- Provide communication service to the application layer
- Ensure interoperability

Project Scope:

Provide overall technical conditions for the successor of GSM-R

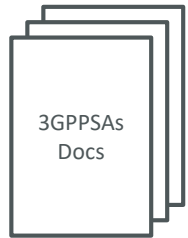
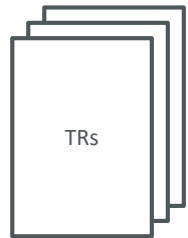
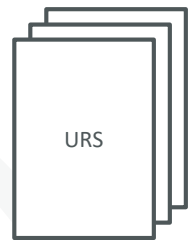
FRMCS: Specifications workflow



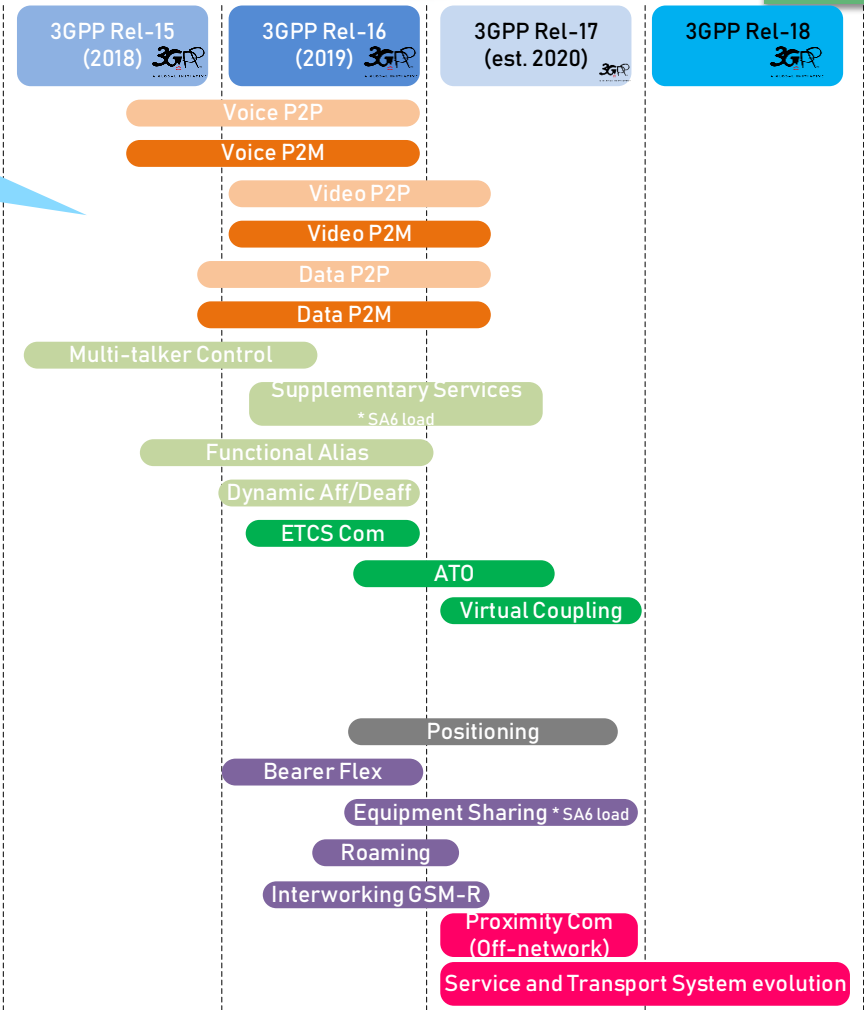
FRMCS will be based on 3GPP building blocks, gaps will be covered by ETSI specifications.

The system will have an FRS and an SRS, to provide the necessary means to operate the FRMCS networks and to guarantee their interoperability in the context of cross border operations.

The FRS and the SRS will complete the FRMCS system and will be the base in the CCS TSI for the Train-Radio and ETCS critical applications.



2/3 of FRMCS Use Cases introduced in 3GPP R16



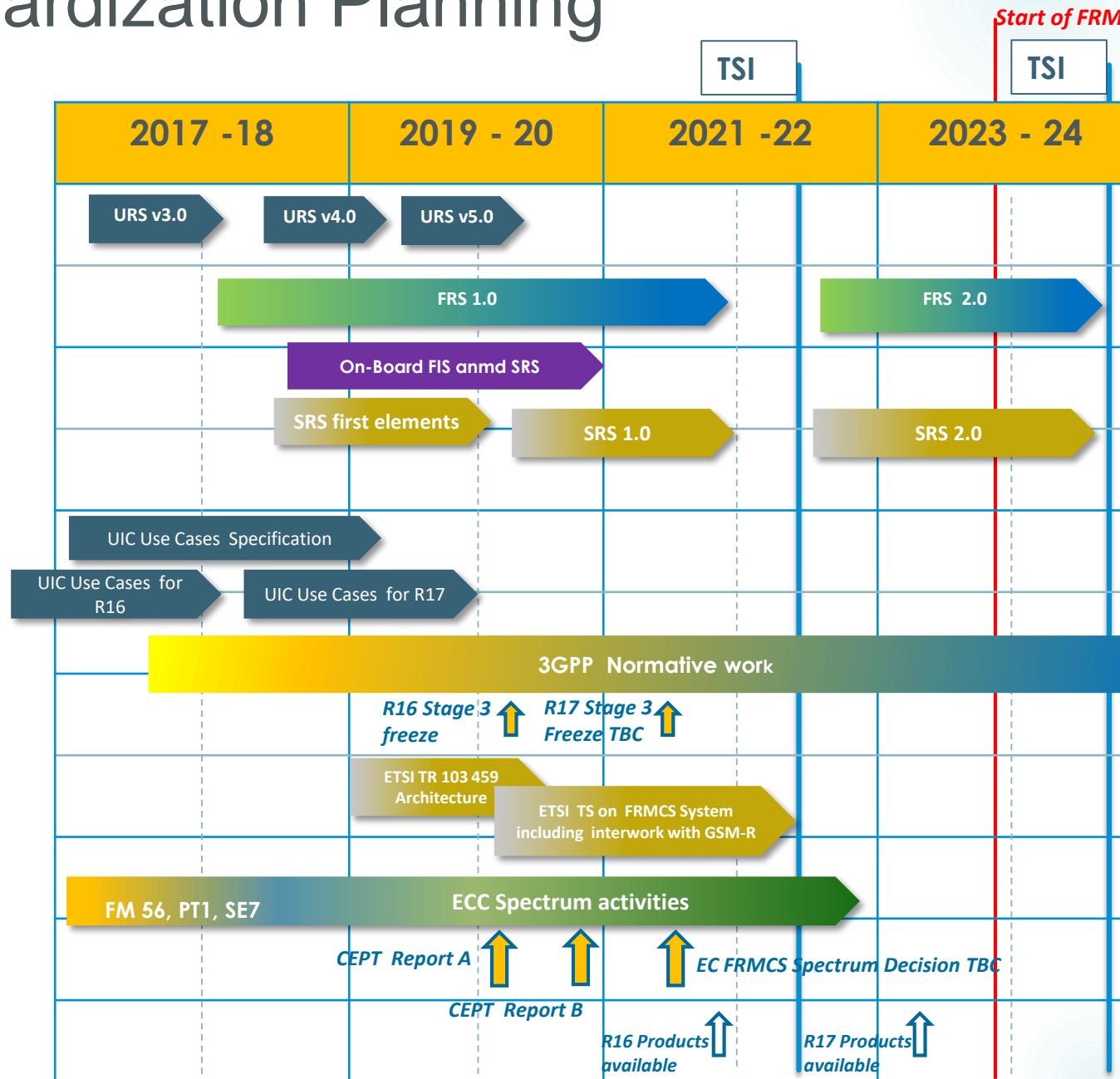
Maximize Functions in 3GPP Release 16 & 17

FRMCS Standardization Planning

FRMCS FRS, SRS, FISs
 - Deliver and FRS based on the global accepted URS
 - Deliver a FRMCS SRS and FISs coordinated with ETSI RT & 3GPP

ETSI TC RT & 3GPP
 - Deliver complete set of use cases to 3GPP
 - Include all use cases in with 3GPP MCX
 - Deliver a set of ETSI specifications to cover FRMCS needs and interwork with GSM-R
 - With UIC FWG and ATWG support

Spectrum
 Obtain spectrum for critical applications in 900, 1900 and/or 2300 MHz for migration period.
 Secure 5 MHz in 900 MHz and access to 1900 MHz and/or 2300 MHz post migration



DELIVERABLES	
URS 4.0	Q1 2019
FRS 1.0	Q2-3 2021
On Board FIS	Q4 2020
On Board SRS	Q1 2020
SRS V1.0	Q3 2021
Final CEPT Rep A	Q1 2020
Final CEPT Rep B	Q3 2020
EC FRMCS Spectrum Decision	Q2 2021
R16 Use Cases	Q3 2018
R17 Use Cases	Q3 2019
ETSI FRMCS TS	Q2 2021

FRMCS Available for National Trials

FRMCS High Level Plan



FRMCS V1 Specification	FRMCS Demonstrator ⇒ V2 Spec	FRMCS European Trial ⇒ Readiness
<p>STARTING POINT</p> <ul style="list-style-type: none"> • URS 4.0 • Use Cases V1 to 3GPP R16 (60%) 	<p>STARTING POINT</p> <ul style="list-style-type: none"> • <u>Stabilized</u> FRMCS Specification • R16 Products : MCX 4G/5G (→ Industry) 	<p>STARTING POINT</p> <ul style="list-style-type: none"> • <u>Operational</u> FRMCS Specification • R17 Products : FRMCS 5G (→ Industry)
<p>PLAN</p> <ul style="list-style-type: none"> • FRS 1.0 • On-Board System Definition & Migration • On-Board FIS 1.0 • SRS 1.0 • Validation of Uses Cases V1 in 3GPP R16 • Use Cases V1 to 3GPP R17 (95%) • Use Cases V1 Gaps vs. 3GPP => ETSI TS • CEPT Report with Railway Frequencies & radio coexistence criteria, then EC Radio Spectrum Committee harmonization • Technology target(s) decision • Migration Scenarios Traffic Estimates 	<p>PLAN</p> <ul style="list-style-type: none"> • FRMCS demonstrator based on FRMCS V1 (→ H2020, S2R) • FRS 2.0 • On-board FIS 2.0 • SRS 2.0 • Validation of Use Cases V1 in 3GPP R17 • Use Cases V2 in 3GPP R18 • Preparation of TSI inclusion 1 (→ ERA) • Frequency Plans for Migrations • Deployment & ENIR Migration assessments • Signalling Continuity assessments 	<p>PLAN</p> <ul style="list-style-type: none"> • FRMCS European Trial(s) based on FRMCS V2 (→ CEF, S2R) • FRS 3.0 • On-board FIS 3.0 • SRS 3.0 • Validation of Use Cases V2 in 3GPP R18 • Use Cases V3 in 3GPP R19 • Preparation of TSI inclusion 2 (→ ERA) • Cross-borders procedures • Interconnection hubs development (→ Industry, → CEF, S2R) • Guidelines for Operational Migrations

Stay in touch with UIC!

www.uic.org



#UICrail

Thanks for your kind attention

FRMCS Challenges

