

Revised CCS TSI (EU) 2019/776

Session III: ERTMS regulatory and funding framework – 16/10/2019

Juan Hernández Fernández

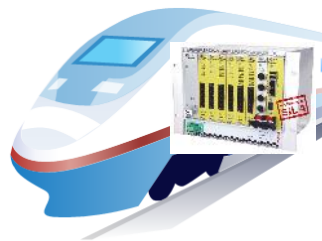
Focus on TSI Text - No changes in the current ETCS and GSM-R Baselines -

4th Railway
Package

- CR #001: Changes in authorized subsystem (article 4.3.h) ⇒ **BDCs** (Table 7.1) Minor SW update
- CR #002: Parameters route compatibility (article 4.3.i) ⇒ **ESC/RSC** (Basic parameter 4.2.17)

Proposals from the sector
(CCS TSI Revision WP)

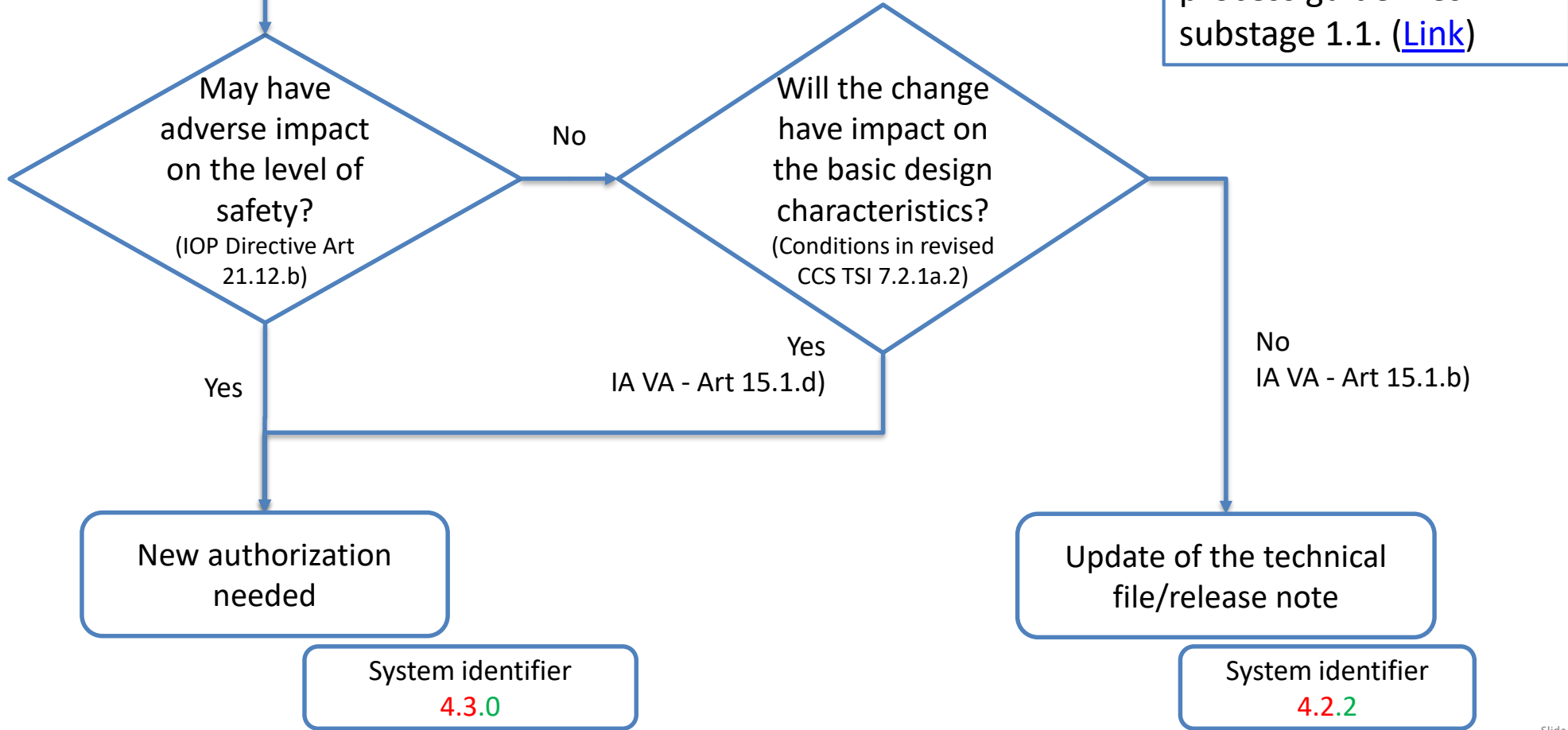
- CR #003: Chapter 6 – Testing and Validation (Superseded by CR 001/002)
- CR #004: Train Detection ⇒ **Index 77** – Interface document **v4.0** / Axle Counter **IC** (Section 5)
- CR #005: Editorial & Miscellaneous
- CR #006: Harmonization of NoBo documentation (Rejected. IA on EC Declaration for Verification)
- CR #007: Incorporation of Opinion 2017/5 about test specifications ⇒ Annex A tables set #2-3
- CR #008: Clarification of ETCS level definitions ⇒ Section 2.3: Trackside Application Levels
- CR #009: Common Safety Methods Risk Assessment and Safety standards CENELEC
 - ↪ Section 3.2.1: **CENELEC** standard application to be assessed by an **AsBo**
- CR #010: Migration provisions for the Next Generation Communication Systems
 - ↪ Section 7.4.4: Radio migration in the NIP



Change in the on-board subsystem

System identifier
4.2.1

Functional identifier
Realization identifier



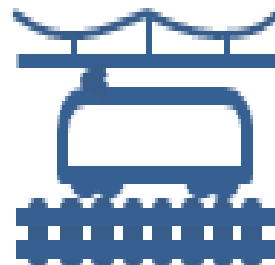
ETCS and Radio System Compatibility – General process



IM classifies the trackside according to ESC & RSC checks required for demonstrating technical compatibility.
This values are recorded in RINF



Each IM notify ESC/RSC.
The Agency shall set up and manage the set of checks to demonstrate the technical compatibility
Eg: ESC-1, RSC-1



Vehicle authorisation

Applicant performs the ESC/RSC.
The result are verified by NoBo and a ESC Statement for the subsystem is produced.
Recorded in the vehicle authorisation.
This values are recorded in ERATV.



Route Compatibility Check

(not part of VA)
RU compare ETCS & Radio System Compatibility value between in RINF

Pre-conditions

Categorisation of ETCS tracks into ETCS line types (ESC types)

Submission of checks for the demonstration of ESC to ERA for each ESC type

Realization of test facilities for the demonstration of ESC

Performance

Request of EAED¹ to IM² for the demonstration of ESC for specific ESC types

Performance of checks by test facility

TM³

TS⁴

IM²

Performance successful?

Yes

No

Test result

Confirmation by Notified Body

ESC statement

¹ Entity applying for ESC demonstration

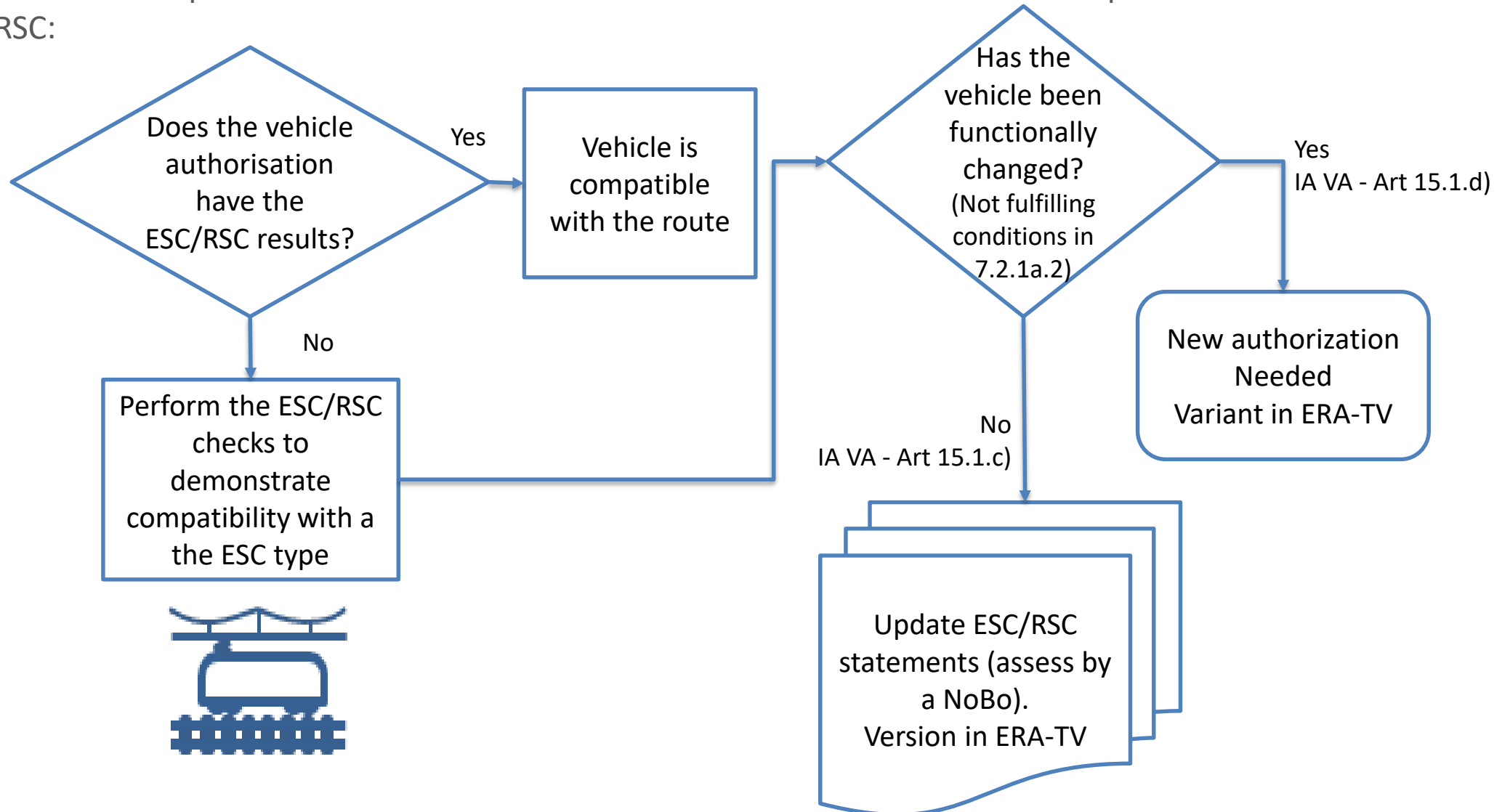
² Infrastructure Manager

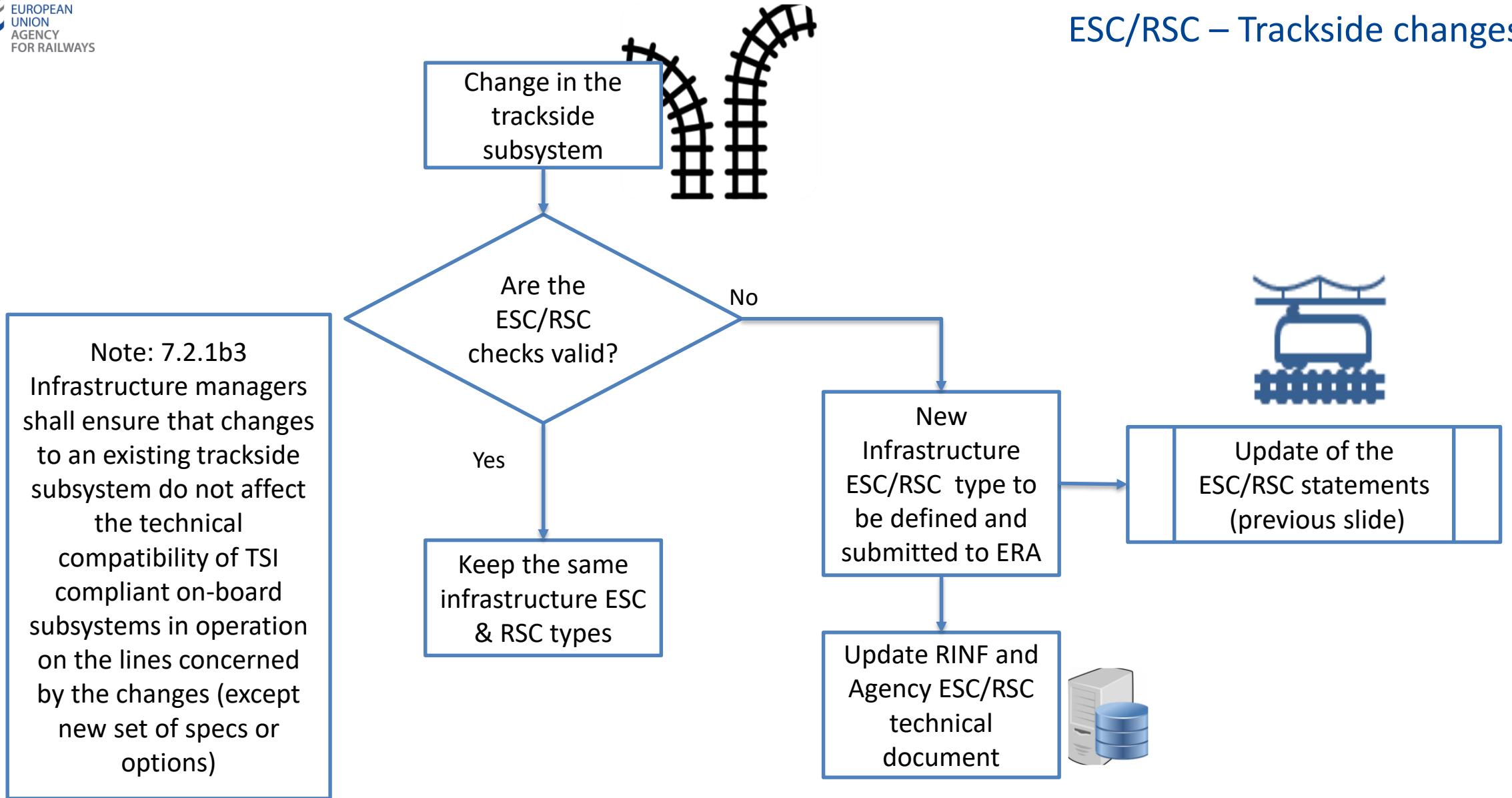
³ Test Manager

⁴ ETCS trackside supplier

ESC/RSC – Changes on-board: Addition of new ESC/RSC statements

- If a vehicle wants to operate in a route inside the area of use with a different technical parameter for ESC/RSC:



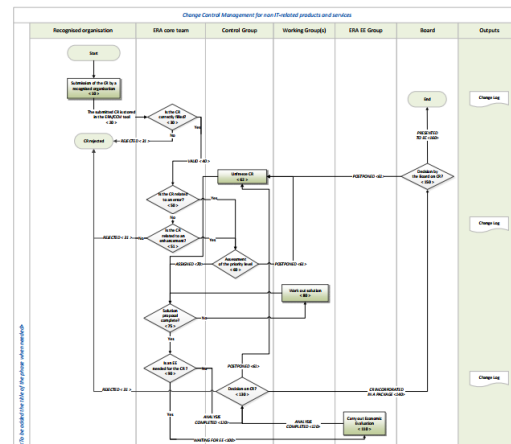


- The **CCM procedure** will continue to be applied due to good experience on the last CCS TSI Revision.

EUROPEAN UNION AGENCY FOR RAILWAYS

Procedure
 Change Control Management
 PRO_CCM_002 V 2.1

2.3.2. Workflow



- Change request (CR) per topics
- Transparency and traceability

- Coordination with other TSIs (LOC&PAS, OPE, ...) to produce a **synchronised update**.



Making the railway system work better for society.

Follow us on  [ERA_railways](#)

Discover our job opportunities on era.europa.eu

