

JSG

RU/IM Telematics
Joint Sector Group



7th Regional TAF TSI Workshop

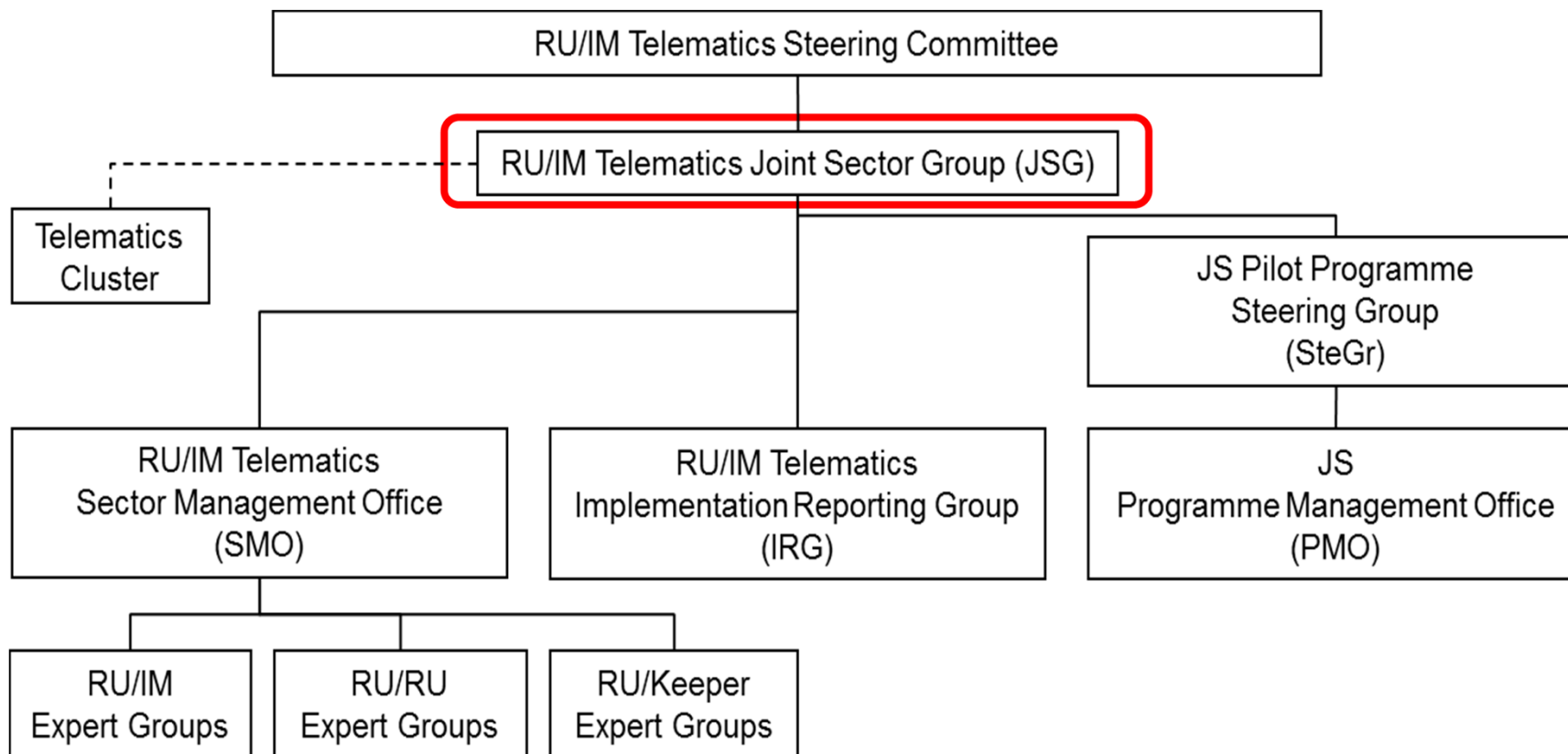
The role of the Telematics Joint Sector Group (JSG)

Christian Weber
București, 07/03/2018



JSG | The JSG is the key central driver within the governance structure for RU/IM Telematics

TAF TSI (EU) No 1305/2014	TAP TSI (EU) No 454/2011	
RU/IM	RU/IM	Retail



JSG | The governance structure for RU/IM Telematics is supported by CER

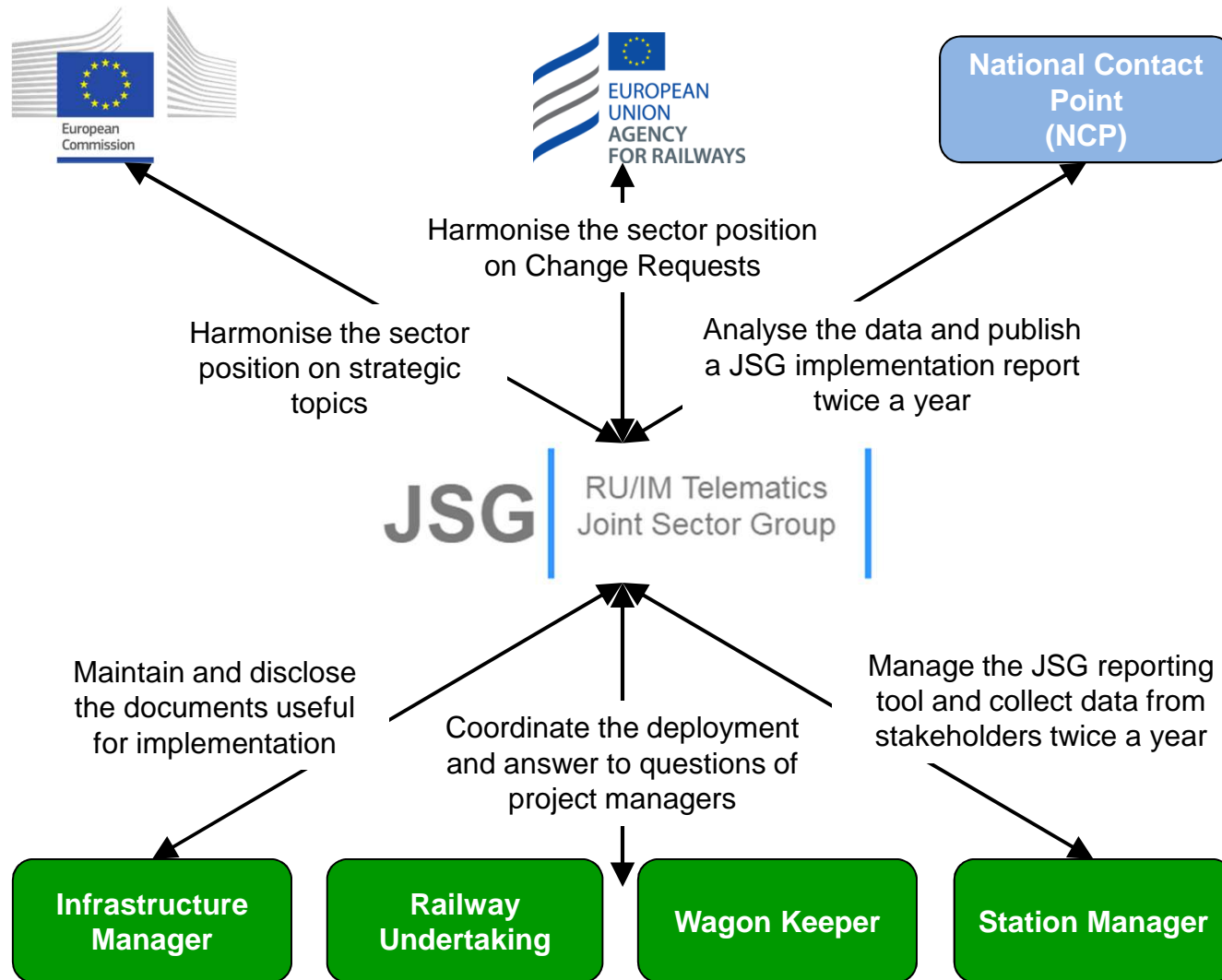
The **SteCo** is co-chaired by Commission and the JSG and composed of:

- the DG MOVE
- the 'Representative Bodies RBs' from the railway sector
- the ERA (system authority for TAP/TAF and Registers)
- observers from other organizations

The **JSG** is composed of:

- the Sector Chairman of the Steering Committee
- the Chairman and the Co-Chair of the JSG (CER Members/Speakers)
- the CER Coordinator of the Coordination Technical Group (CTG)
- the Chairman of the Sector Management Office
- the TAP TSI Project Manager (CER Member/Speaker)
- Identified representatives of the Representative Bodies

JSG | The JSG consists of influential stakeholders from representative bodies



JSG | All information is made publically available at the
JSG website

RU/IM TELEMATICS JOINT SECTOR GROUP (JSG)

Telematic Application for Freight (TAF TSI) – Telematic Applications for Passenger (TAP TSI)

[Home](#) [Governance](#) [Regulation](#) [Specification](#) [Implementation](#) [Meetings](#) [Contact us](#)



<http://taf-jsg.info/>

- the document describing the **governance** of the JSG
- the **Sector Handbook** updated with the Change Requests
- the **data model** (xsd schemas) updated with CRs approved by ERA
- the **reports** of the TAF/TAP TSI implementation
- the **links** e.g. to TAF/TAP page on ERA website
- a **form** to raise specific questions

JSG Documents on the JSG website are regularly kept up to date

JSG RU/IM Telematics Joint Sector Group

Home Governance Regulation Specification Implementation Meetings Contact

SECTOR HANDBOOK

The Sector Handbook describes messages and elements used by the sector for RU/IM communications for planning and operation in freight and passengers traffic. Some of these messages are basic parameters described in TAF and TAP regulation. Others are out of the scope of the regulation, designed by the sector for the sector and implementation by the actors under agreement. This document explains the TAP and TAF messages derived from both regulations, gives insight on their legal status, explains their usage; the overall architecture, the establishment and use of the reference data and relevant code list. Apart from the central reference files, this document is not describing specific applications, as neither TAF nor TAP require the use of a specific commercial product.

The Sector Handbook will be maintained by the SMO (Sector Management Office). Changes from the previous to the current baseline of the Sector Handbook are recorded in the Sector Handbook Change Log.

In the meantime, any actor detecting errors, needing clarifications or proposing additions or updates can contact the SMO via JSG web site contact form.

The current baseline of the Sector Handbook and relevant annexes can be downloaded from the following list:

TAF/TAP RU/IM Sector Handbook_v2.1.7_1.4.pdf

Telematics Governance
TAF TSI
TAP TSI
TAF TSI Masterplan
TAP TSI Masterplan
RU/IM Telematics Sector Handbook

Search ...

SEARCH

TAP TSI and TAF TSI

Sector Handbook for the Communication between Railway Undertakings and Infrastructure Managers (RU/IM Telematics Sector Handbook)

Submitted on 25th August 2017

Project: TAP/TAF TSI

Date: 25 August, 2017

Author: Christian Weber (JSG Leader)
Josef Stahl (TEG "Operations" Leader)
Jorge Campo / Máté Bak (TEG "Planning" Leader)
Seid Maglajlic (TrainID / SMO Leader)
Stephan Breu (CCG General Manager)
The initial work is done by previous WGs, EGs and TGs leaders: A. Abegg, D. Haltner, R. Kapoor, H. Hantak, I. Tomekova, S. Naundorf, L. Stenegard

Owner: RU/IM Telematics Joint sector Group

Client: Sector

Document Ref: RU/IM Telematics Sector Handbook

Page 1



Thanks!

In case of any questions, please contact:

Christian Weber (christian.weber@sncf.fr)

Jan-Christian Arms (jan-christian.arms@deutschebahn.com)

Emanuele Mastrodonato (emanuele.mastrodonato@cer.be)