



## **RSRD<sup>2</sup>** **Rolling Stock Reference Database**

ERA approved tool to fulfil the TAF TSI RSRD message obligations as wagon keeper

Adam Butryn, Warsaw, September 2017

# UIP – International Union of Wagon Keepers



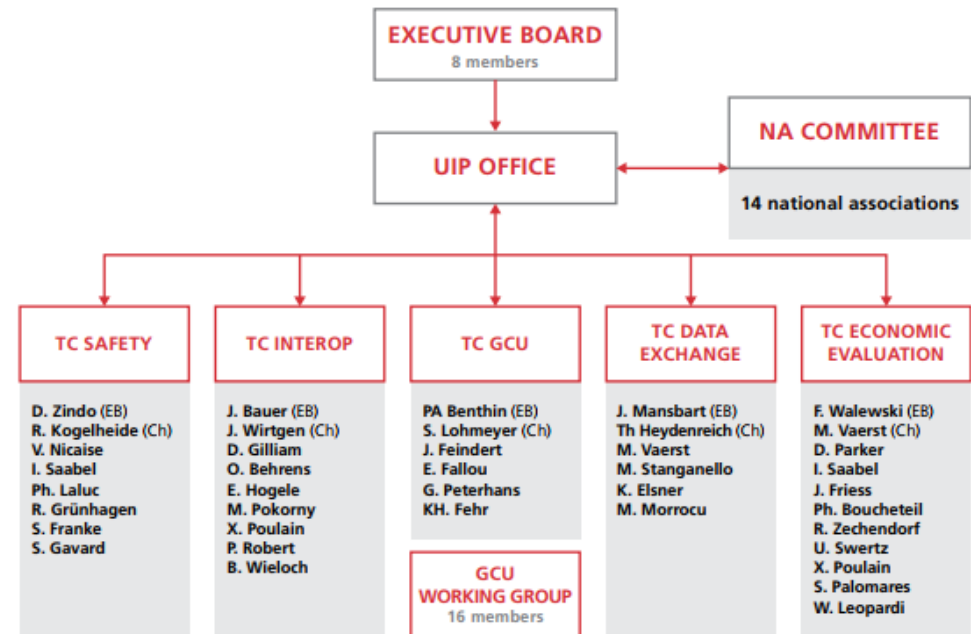
- UIP members are spread among 14 National Associations around Europe
- UIP represents 250 wagon keepers & Entities in Charge of Maintenance (ECM)
- UIP members own more than 200 000 freight wagons that produce 50% of tons-km around Europe
- UIP recognized by the European Commission as a representative body in the railway sector
- UIP participates in approximately 40 Working Groups at European level representing needs & interests of wagon keepers and ECMs



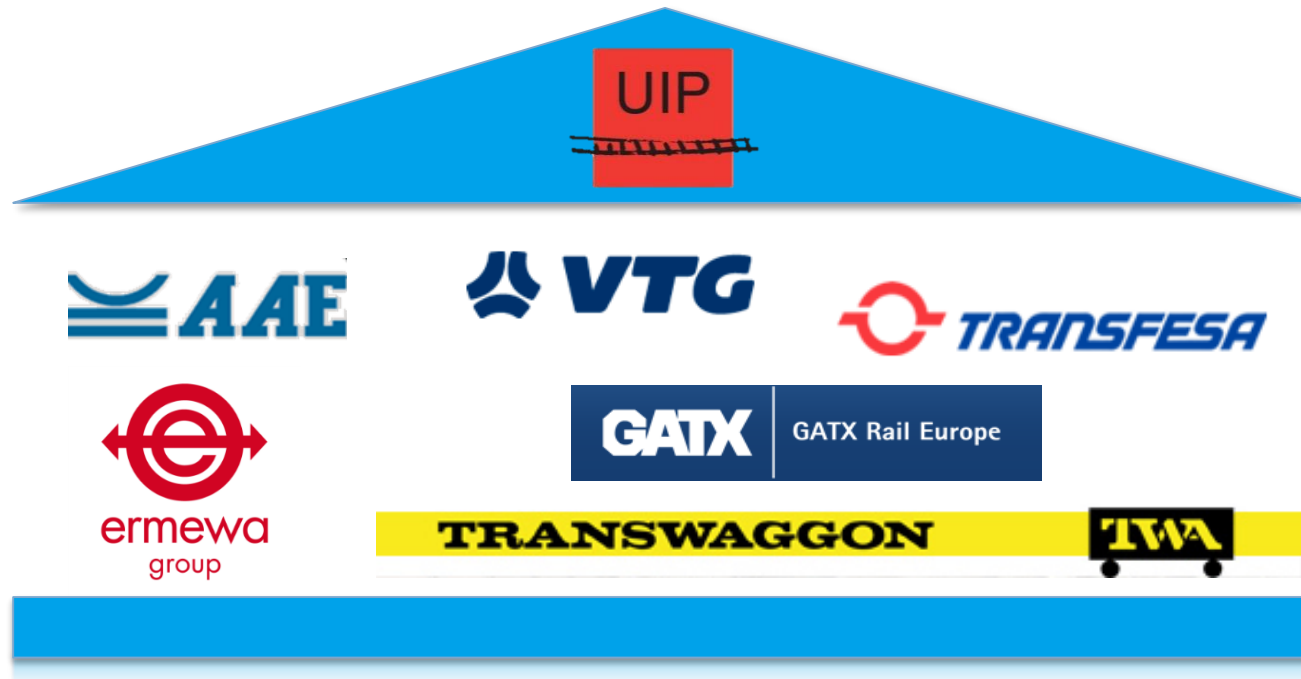
# UIP structure & approach



- UIP strategy is guided by Presidency & Executive Board who represent National Associations and keepers
- NA assembly is a platform to exchange best practices and to understand impact of EU legislation on wagon keepers
  - Polish National Association – SWP (Stowarzyszenie Wagony Prywatne)
- NA activities are supported by 5 Topical Committees who provide operational & technical expertise on interoperability, safety, GCU, economic evaluation and data exchange
- TC Data Exchange works on RSRD<sup>2</sup> as a TAF TSI certified tool

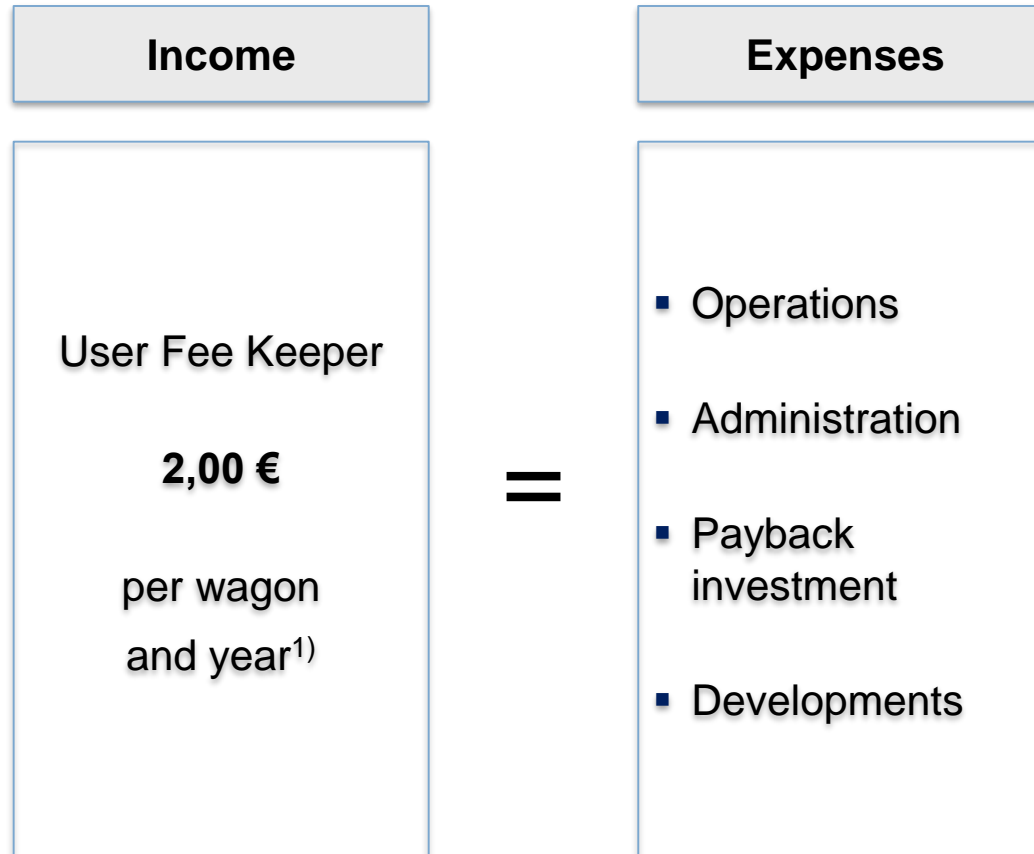


Initiated by six wagon keepers and under the umbrella of UIP the common database solution RSRD<sup>2</sup> has been developed



Benefits: cost benefits, economies of scale, common standard, common and central interface, consideration of mileage issue (not direct part of TAF TSI)

**RSRD<sup>2</sup> asbl is a non profit organization where user fees are only be used to cover the running expenses**



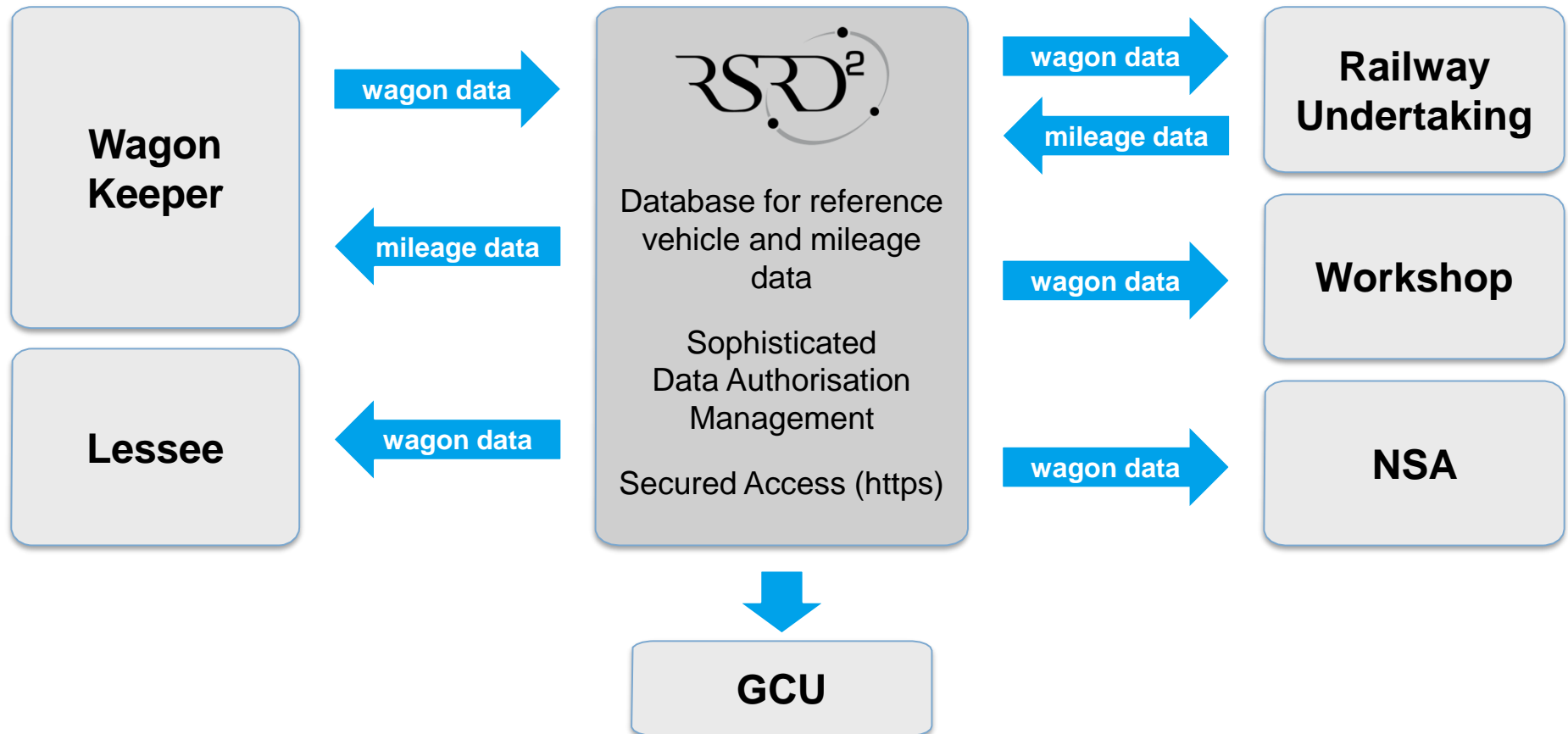
**▶ Query of wagon data is free of charge but a free of charge delivery of mileage data by railway undertakings using RSRD<sup>2</sup> is expected**

1 User fee depends on recorded wagons (currently based on 115.000 wagons)

# RSRD<sup>2</sup> shall become the central interface for the electronic exchange of reference vehicle and mileage data in Europe



## RSRD<sup>2</sup> Work Flow



# The RSRD<sup>2</sup> data catalogue includes all necessary information required for train preparation and operation by RUs



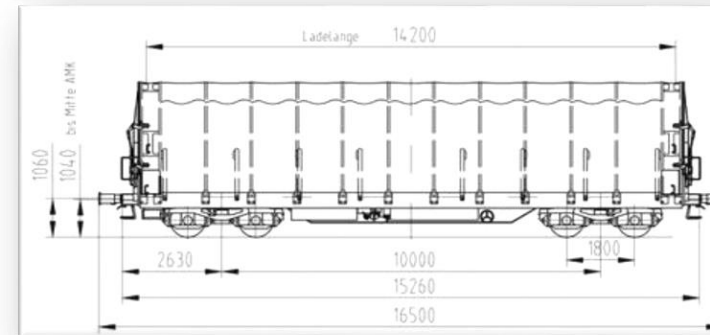
## RSRD<sup>2</sup> Wagon Data

### Registration/Authorisation



- Registration country, multilateral authorisations
- Authorisation data
- Keeper, ECM and ECM certificate

### Design



- Compatibility with infrastructure (load limits, maximum speed, loading gauge etc.)
- Brake information (incl. LL block)
- Loading dimensions
- Maintenance dates

▶ The data catalogue comprises about 100 mandatory and optional TAF elements

In the meantime more than 30 wagon keepers and 50 RUs using the RSRD<sup>2</sup> system



## Examples RSRD<sup>2</sup> User

### Wagon Keepers



### Railway Undertakings



### Others

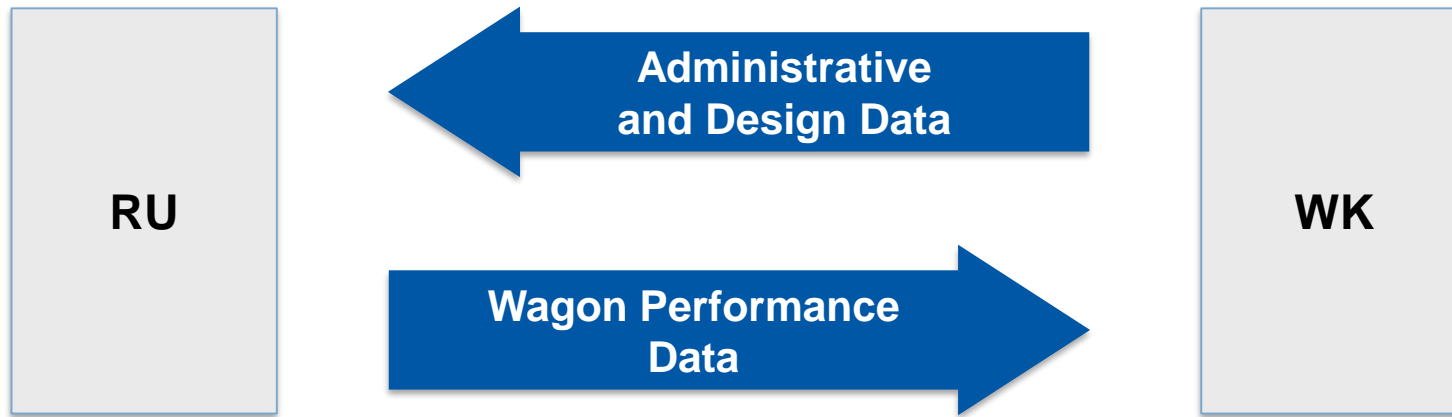




# Wagon Keepers offer a fair „giving and taking“ with the railway undertakings



## Mutual Data Exchange



 SBB CFF FFS Cargo

 CAPTRAIN

 green cargo

 DB SCHENKER

 LOTOS

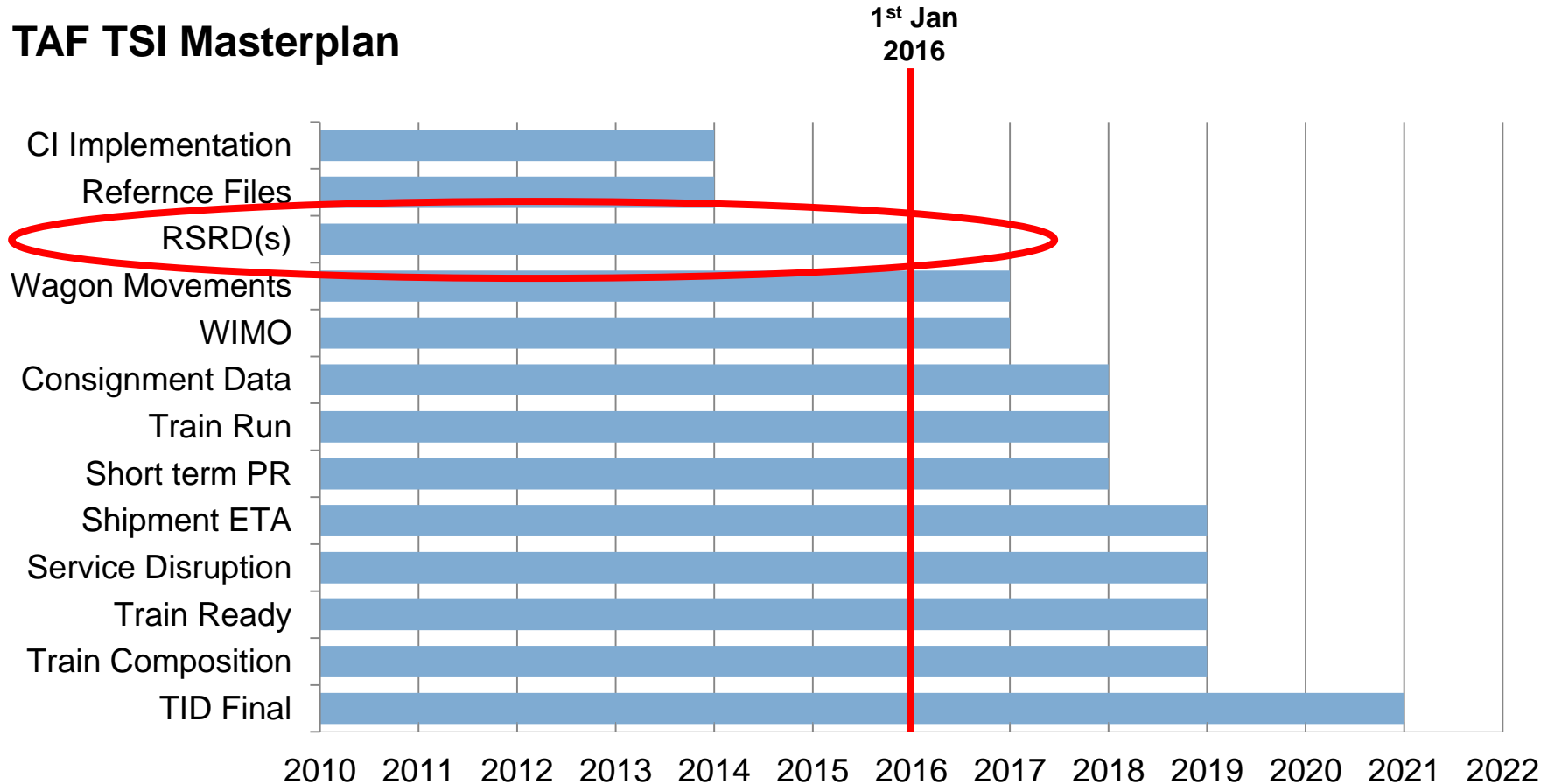


Keeper

# All European wagon keepers are obliged to provide a TAF TSI compliant RSRD database since 1<sup>st</sup> January 2016



## TAF TSI Masterplan



## Benefits of the RSRD<sup>2</sup> system



- Comply fully with TAF TSI requirements (formats, interfaces, service levels etc.)
- No additional cost, e.g. license fees for Common Interface
- Manual or system interface data input and data query
- No reporting to European Railway Agency about TAF TSI implementation status required
- Automatic GCU update daily (consistent data)
- Very economic solution
- High standardization and automation level
- Central interface for mileage data delivered by RUs