



RAEA
RAILWAY ADMINISTRATION
EXECUTIVE AGENCY



THE RAILWAY ADMINISTRATION EXECUTIVE AGENCY NATIONAL CONTACT POINT FOR TSI TAF OF THE REPUBLIC OF BULGARIA

7th Regional TAF TSI Workshop

7-8 March 2018

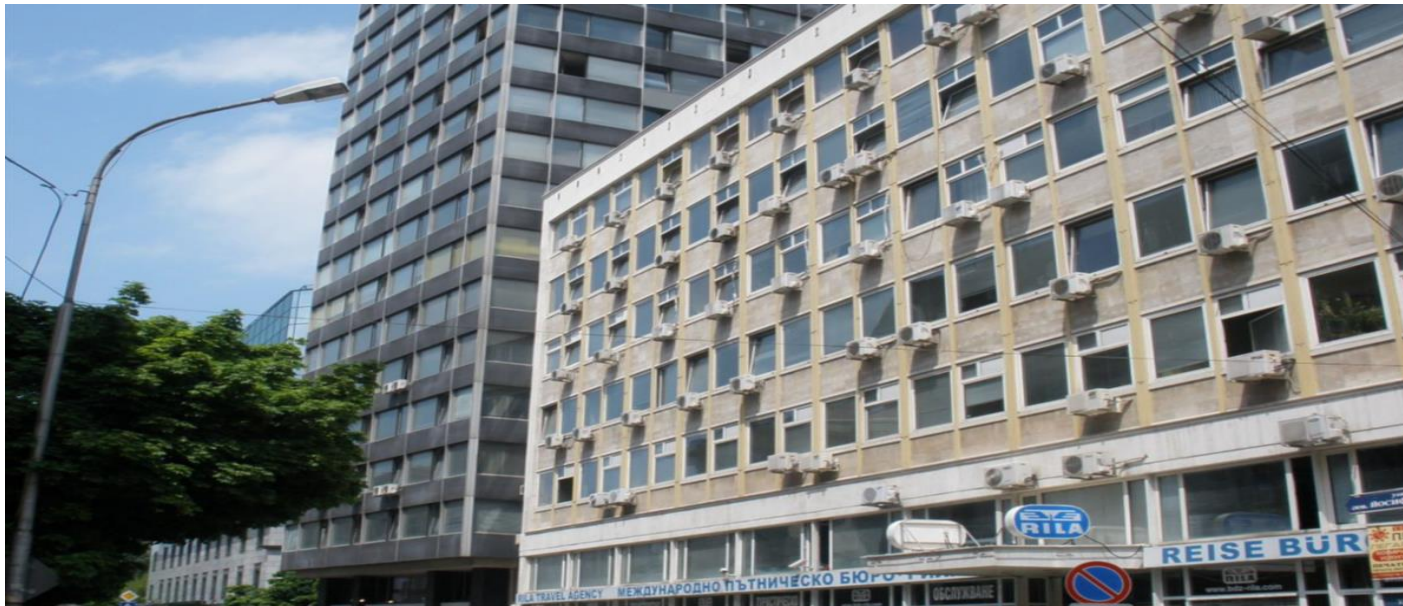
Bucharest, Romania



RAEA
RAILWAY ADMINISTRATION
EXECUTIVE AGENCY



The Railway Administration Executive Agency (RAEA) was established by Decree No 167 of the Council of Ministers from 2001 in implementation of the requirements of the Railway Transport Act (RTA). RAEA is a legal entity on budget expenditure with a head office in Sofia and with three territorial units – regional railway inspectorates.

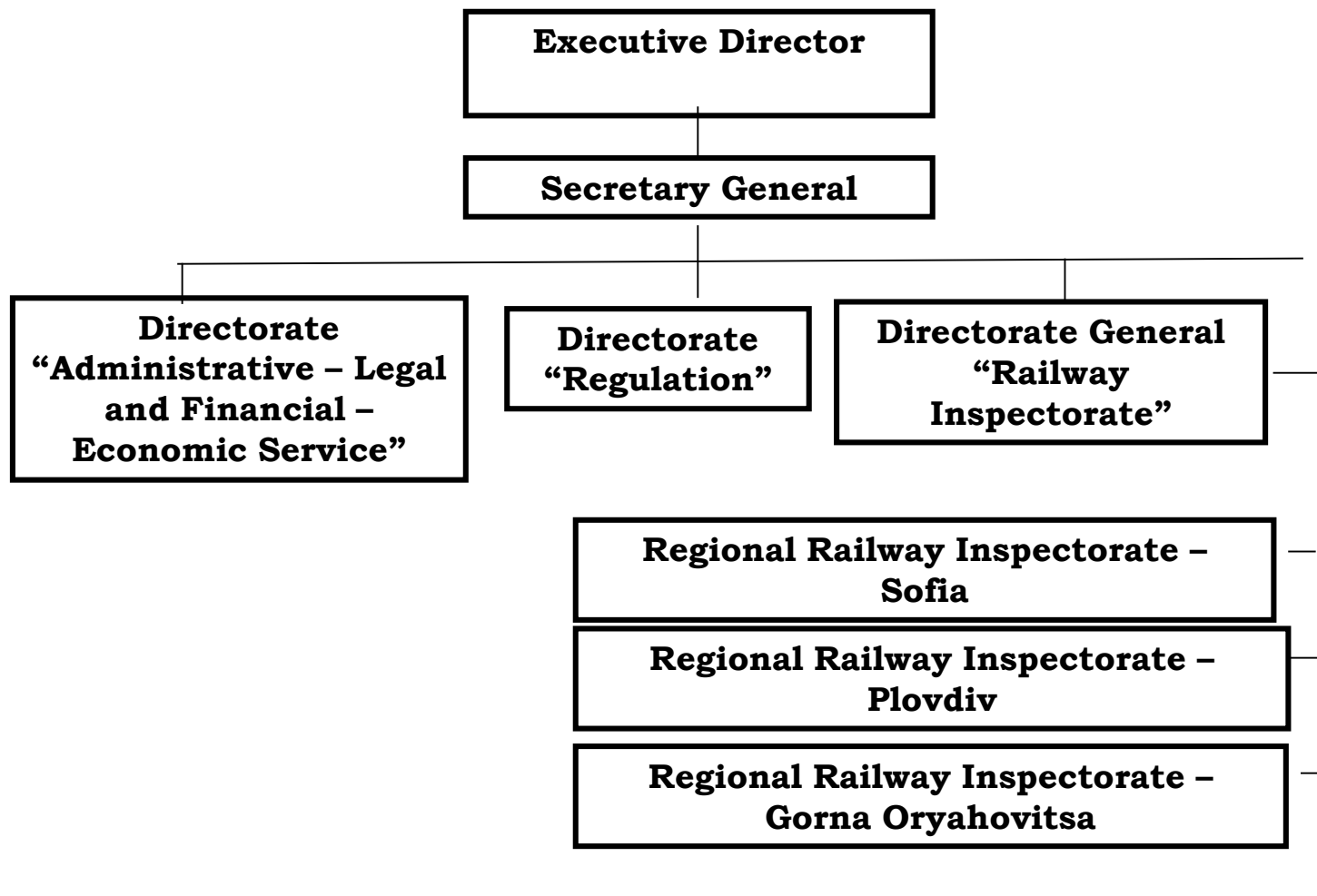




RAILWAY ADMINISTRATION
EXECUTIVE AGENCY



Structure of RAEA





RAILWAY ADMINISTRATION
EXECUTIVE AGENCY



Organization of RAEA

Pursuant to the RTA, RAEA carries out coordination and control of activities in the field of rail transport.

- RAEA is Regulatory Body for railway transport.
- RAEA is National Safety Authority
- RAEA is Enforcement Body of Regulation (EC) No 1371/2007 of the European Parliament and of the Council of 23 October 2007 on the rail passengers' rights and obligations.



RAILWAY ADMINISTRATION
EXECUTIVE AGENCY



Organization of RAEA

- Art. 6. para. 5 of RTA
- “RAEA is independent in the performance of its functions and in making decisions, including from any infrastructure managers, bodies imposing fees, allocation bodies and applicants. RAEA is functionally independent from any competent authority participating in the award of public service contracts in the field of rail transport.”



RAILWAY ADMINISTRATION
EXECUTIVE AGENCY



Organization of RAEA

- RAEA is managed and represented by Executive Director, who is:
 - a body of executive power;
 - carries out its powers in cooperation with the bodies of executive power for the implementation of the unified state policy;



RAILWAY ADMINISTRATION
EXECUTIVE AGENCY



Organization of RAEA

- The Executive Director issues individual administrative acts: orders, mandatory instructions/injunctions/penalty decisions.
- The Executive Director imposes fines and financial penalties.
- The administrative acts may be appealed before the Court.



RAILWAY ADMINISTRATION
EXECUTIVE AGENCY



RAEA as NCP
for TAF TSI
and TAP TSI

- RAEA acts as National Contact Point for TSI TAF (Commission Regulation (EU) No 1305/2014 and TSI TAP (Commission Regulation (EU) No 454/2011) on the basis of the RTA and the applicable national legislation.
- Through its notified representative RAEA participates in the ERA TAF TSI and TAP TSI Implementation Cooperation Groups.



RAILWAY ADMINISTRATION
EXECUTIVE AGENCY



RAEA as NCP for TAF TSI

- At the national level the NCP of Bulgaria leads a working group consisting of designated managers/ representatives of the infrastructure manager/ licensed railway undertakings/ wagon keepers, responsible for the implementation of TAF TSI.
- It disseminates information related to the reporting sessions, the results of the ERA TAF TSI Implementation Cooperation Group etc. – by email, in meetings, on the RAEA website, etc.



RAILWAY ADMINISTRATION
EXECUTIVE AGENCY



Development and structure of the rail transport of Bulgaria

The first railway line in Bulgaria was built in 1866 and the State Company “Bulgarian State Railways” was established in 1888. Until 2002, the National Company “Bulgarian State Railways” EAD (BDZ) was the largest railway operator in the country, which also maintained the major part of the railway infrastructure.

As of 1 January 2002, with the RTA, the National Company “Bulgarian State Railways” was divided into two separate companies:

- the incumbent railway operator “Bulgarian State Railways” EAD and the infrastructure manager – the State Enterprise “National Railway Infrastructure Company”.

Currently:

“Holding BDZ” EAD

“BDZ–Freight Services” Ltd.

– the incumbent
freight RU

“BDZ–Passenger Services”
Ltd.

– the incumbent
passenger RU

SE “National
Railway
Infrastructure
Company” (NRIC)



RAILWAY ADMINISTRATION
EXECUTIVE AGENCY



Structure of the railway transport of Bulgaria

- The national railway infrastructure is managed by the infrastructure manager SE NRIC.
- It is used by **licensed** railway undertakings having a **safety certificate** and **Annex No 1 to the license for financial coverage of civil liability**.
- In Bulgaria, 14 licensed railway undertakings for freight transport currently operate, 13 of which have a complete license for operation on the whole territory of the country and 1 has a limited license for operation on a regional line.



RAILWAY ADMINISTRATION
EXECUTIVE AGENCY



Licensed Freight Rus

LICENSED FREIGHT RAILWAY UNDERTAKINGS IN BULGARIA

- “BDZ – FREIGHT SERVICES” LTD.
- “BULGARIAN RAILWAY COMPANY” AD
- “RAIL CARGO CARRIER-BULGARIA” EOOD
- “DB CARGO BULGARIA” EOOD
- “BULMARKET RAIL CARGO” EOOD
- “EXPRESS SERVICE-OOD” LTD.
- STATE ENTERPRISE “TRANSPORT CONSTRUCTION AND RECONSTRUCTION”
- “CARGO TRANS WAGON BULGARIA” AD
- “PORT RAIL” LTD.
- “GASTRADE” AD
- “TBD CARGO” EAD
- “PIMK RAIL” EAD
- “DMV CARGO RAIL” EOOD
- “MINI MARITSA IZTOK” EAD



RAILWAY ADMINISTRATION
EXECUTIVE AGENCY



The freight railway market in Bulgaria

- The market leader is “BDZ – Freight services” LTD., followed by BRC AD, DB Cargo Bulgaria EOOD, Bulmarket Rail Cargo EOOD, Rail Cargo Carrier Bulgaria EOOD, TBD Cargo, etc.
- In recent years the market share of the incumbent freight railway carrier has been decreasing in favor of the private freight railway carriers – i.e. the competition is mainly internal for the mode.



RAEA
RAILWAY ADMINISTRATION
EXECUTIVE AGENCY



The railway infrastructure of Bulgaria

- The total extended length of the railway network is 6,475 km.
- The average density of the railway network is 58,9 km/1000 sq. km. territory.
- On the rail infrastructure of the SE NRIC there are:
 - railway lines with standard track gauge of 1,435 mm;
 - narrow-gauge railway lines with track gauge of 760 mm;
 - sidings in the pre-ferryboat park of the ferryboat complex in Varna with track gauge of 1,520 mm.



RAEA
RAILWAY ADMINISTRATION
EXECUTIVE AGENCY



Topology of the railway lines - Network Statement 2017-2018

Railway lines with normal track gauge 1,435 mm – 6,322 km,
including:

- Single railway lines with normal track gauge (1435 mm) – 3,904 km
- Double railway lines with normal track gauge 989 km;
- narrow-gauge railway lines (760 mm) – 125 km;
- station tracks with normal track gauge (1,435 mm) – 1,429 km;
- narrow-gauge station tracks (760 mm) – 13 km;
- station tracks with wide track gauge (1,520 mm) 15 km;
- 186 railway tunnels with a total length of 47.9 km;
- 1,003 railway bridges with a total length of 42.8 km;
- 758 level crossings



RAILWAY ADMINISTRATION
EXECUTIVE AGENCY



Trans-European railway network of Bulgaria - Regulation (EC) No 1315/2013





RAILWAY ADMINISTRATION
EXECUTIVE AGENCY

Freight Corridor No 7 on the territory of Bulgaria

Program for Development and Operation of the Railway Infrastructure 2017 – 2021 approved by the Minister of Transport

Rail Freight Corridor No 7 **Orient-East Mediterranean** crosses the territory of the Republic of Bulgaria, along the route:

Prague - Vienna/Bratislava - Budapest/Bucharest - Constanta/**Vidin - Sofia** - Thessaloniki - Athens.

In the course of the negotiations on the Trans-European Transport Network, the route of the corridor on our territory was supplemented with the direction **Sofia - Plovdiv - Burgas / Svilengrad - Turkish border**

From the beginning of 2015 there is an alternative route on our territory **Rousse-Sindel-Karnobat-Nova Zagora-Simeonovgrad-Svilengrad**, along which “corridor” trains run.



RAILWAY ADMINISTRATION
EXECUTIVE AGENCY

Integrated transport strategy in the period up to 2030

- The Integrated Transport Strategy of MTITC in the period up to 2030 has been approved by Decision No 336/23.06.2017 of the Council of Ministers.
- The framework of definition of the strategic objectives and priorities for the development of the transport system in the period up to 2030 is determined by the strategic objectives and the priorities laid down in the EU transport policy, the national transport policy and the relevant strategic and normative documents.



RAEA
RAILWAY ADMINISTRATION
EXECUTIVE AGENCY



Opportunities for Improvement of railway freight carriage according to the Integrated Transport Strategy until 2030

- Optimization of the rail network with provision of higher speeds;
- Improvement of the cross-border connections and links with ports and airports;
- Modernization of the infrastructure with minimum damages for the operators;
- Renewal of the railway rolling stock;
- Increasing the competitiveness and the quality of services through the implementation of IT solutions – **telematic applications for freight in accordance with the requirements of Regulation (EC) No 1305/2014;**



RAILWAY ADMINISTRATION
EXECUTIVE AGENCY



Thank you for your attention!

<http://www.iaja.government.bg/>

