

# TAF TSI and CEF funding including Real life experience in TAF TSI implementation with EU funding | Innovative Railway Software Solutions

Kamila Mestická  
Project Coordinator

7<sup>th</sup> Regional TAF TSI Workshop  
Bucharest | Romania | 7 – 8 March 2018

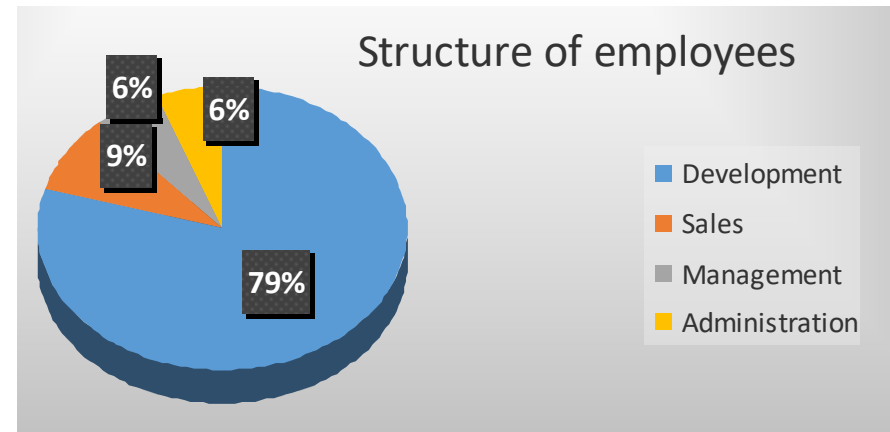




OLTIS Group Profile

# OLTIS Group | Profile

- A Czech private group of specialized **software companies**
- Close and effective cooperation since **1993**
- The main development background is based in **Czech Republic**
- Own **subsidiaries** in Slovakia, Poland and Hungary
- ISO **certified**, Microsoft and Oracle **Gold partner**
- State of the art **Datacentre**
- **Membership**: UNIFE, OSJD, CCTT, IBS; UIC, CIT, OTIF
- **Projects**: Eureka, FP7, Horizon 2020, Shift2Rail, CEF



## IT Systems for Transport and Logistics

**RAIL FREIGHT  
TRANSPORT**



**INFRASTRUCTURE  
MANAGER**



**PASSENGER  
TRANSPORT**



**LOGISTICS**



Innovative Software Solutions  
TAF/TAP TSI compliant or ready

[www.oltisgroup.com](http://www.oltisgroup.com)

# OLTIS Group | References

Infrastructure Managers; Railway Undertakings; Railway freight forwarders and operators; Wagon keepers; Production plants and cargo shippers; Road carriers and forwarders, Terminals and Warehouse operators; Universities; Associations



# OLTIS Group | Solution for IM

## Comprehensive platform of specialized IT tools

- National register of infrastructure
- Infrastructure restrictions management (temporary route closures)
- Railway route capacity selling and ordering; Ad hoc train path timetabling
- Dispatching control and traffic management over the whole network
- Exceptional consignments planning and management
- Personnel planning and performance management
- Railway network access fee calculation

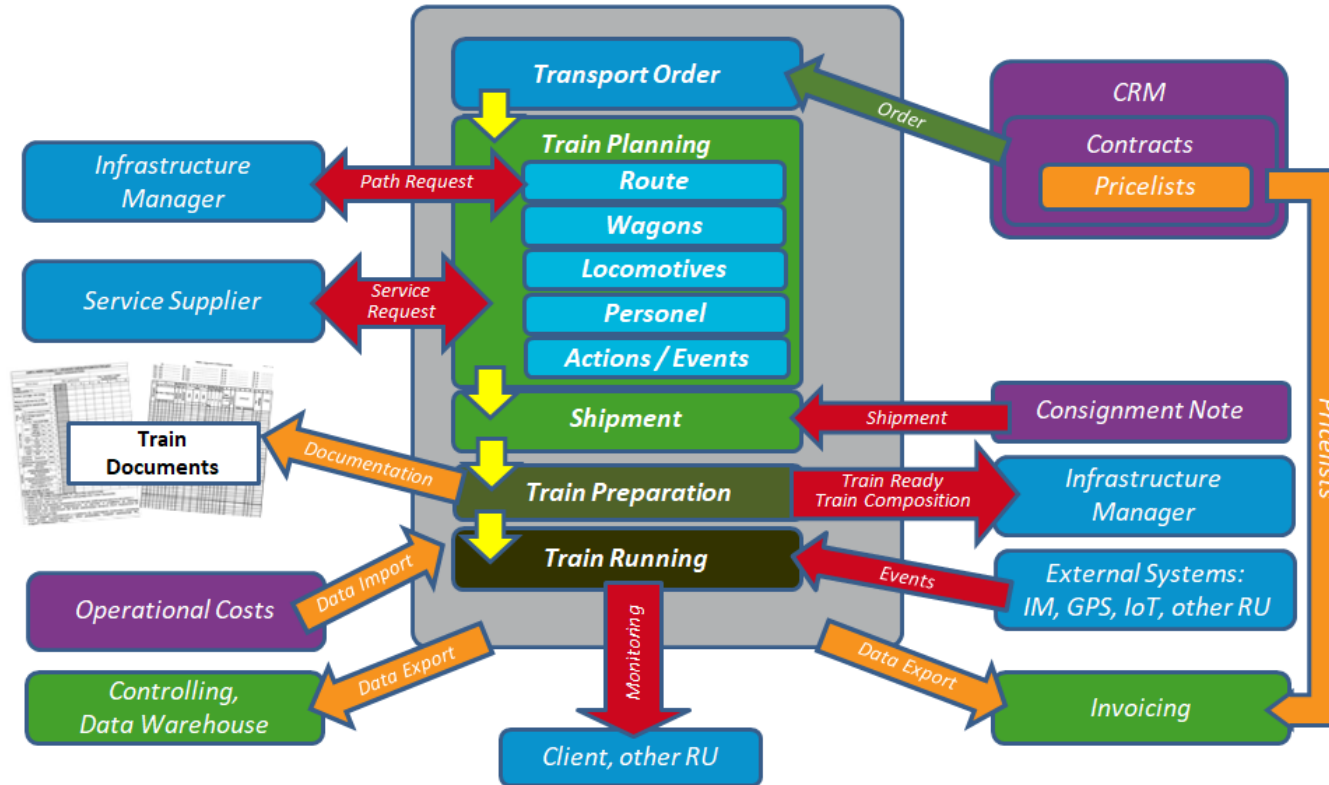


## TAF TSI

- RSRD
- Path Request
- Train Composition
- Train Ready
- Train Running



## Planning – Operations – Evaluation



### TAF TSI

- Path Request
- Train Composition
- Train Ready
- Train Running

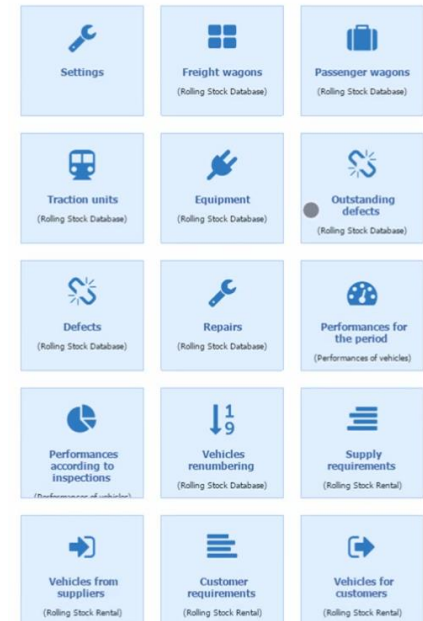
## Rail Vehicle Register of freight cars, passenger cars and locomotives

- Technical data of the vehicle and the detachable equipment
- Regular maintenance checks planning; maintenance alerts
- Defects (AVV classifications) registration, repairs planning
- Rental and lease contracts
- Accounting/controlling data pre-processing
- Mobile application for tablets/smartphones
- Ready for integration with positioning, mileage calculation



### TAF TSI

- RSRD ready







TAF/TAP TSI CEF Projects

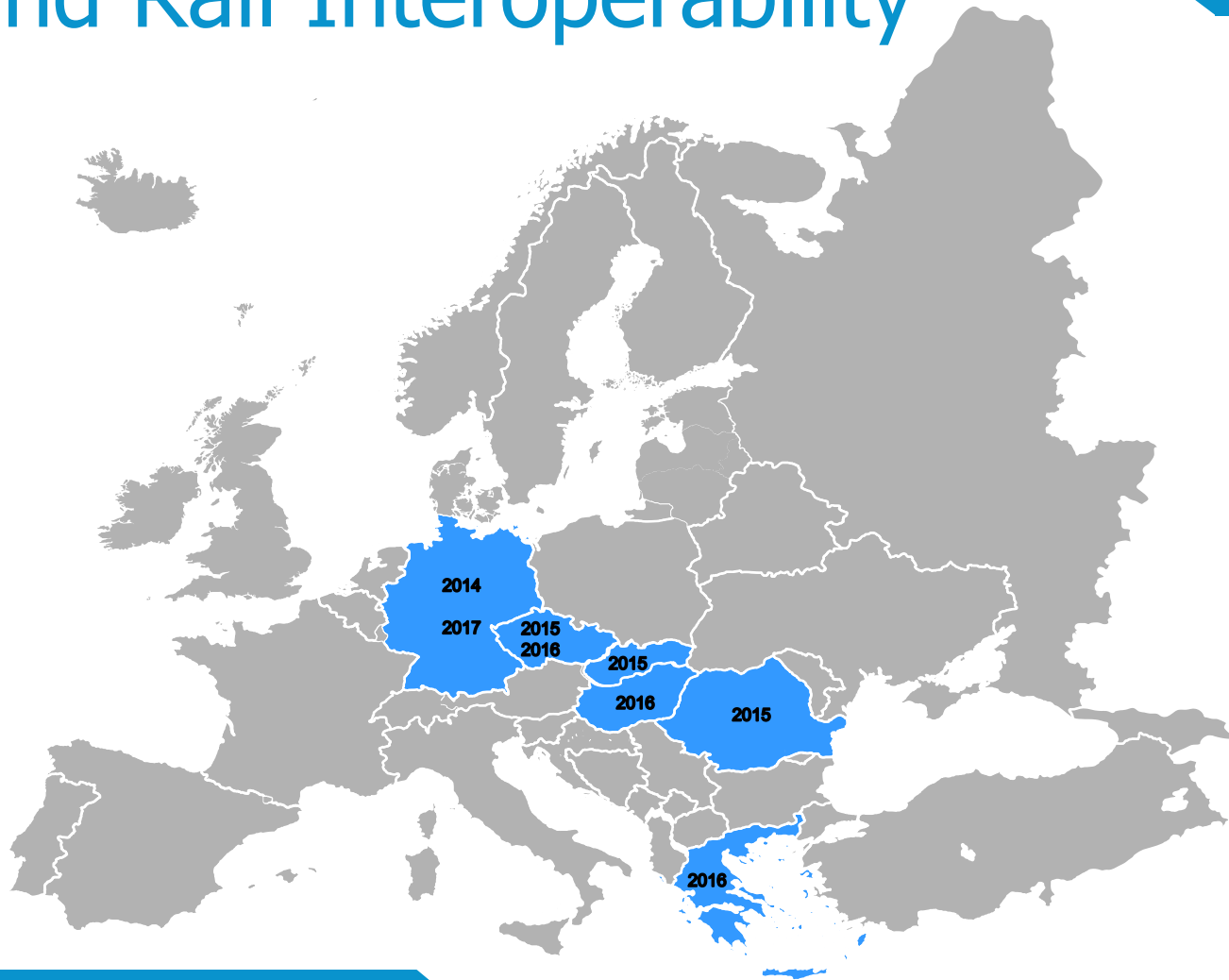
# CEF General Information

## Connecting Europe Facility

- Contributes to the realization of the Trans-European Transport Network (TEN-T) by financing key projects to upgrade infrastructure and remove existing bottlenecks whilst also promoting sustainable and innovative mobility solutions
- CEF Transport budget is implemented in the forms of grants
- Previously - advantageous conditions for cohesion countries



# CEF and Rail Interoperability



# CEF Transport Projects with OLTIS Participation

## CEF Transport 2015

### Implementation of TAF TSI at private railway undertakings

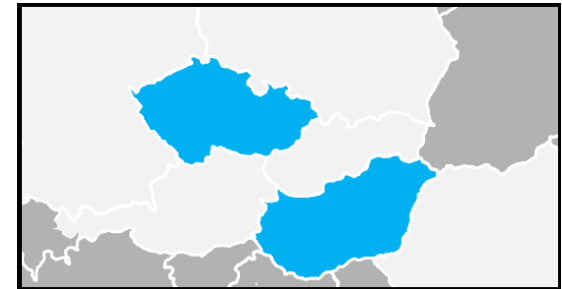
2017–2019 | 1 MEur | 11 companies involved | Leader: oltis group



## CEF Transport 2016

### Implementation of TAF TSI at Hungarian private railway undertakings

2018–2020 | 1,25 MEur | 3 partners | Leader: oltis group



# Implemented TAF TSI Messages

## **TAF TSI implementation Phase 1:**

Common Interface, Reference Files,  
Rolling Stock Reference Database

## **TAF TSI implementation Phase 2:**

Consignment Note Data, Wagon  
Movement, Operating Rolling Stock Data/  
WIMO (Wagon and Intermodal Unit  
Operating Database)

## **TAF TSI implementation Phase 3:**

Path Request, Train Composition  
Message, Train Running

## **TAF TSI implementation Phase 4:**

Service Disruption Information, Train  
Ready Message, Shipment ETA  
(Estimated Time of Arrival) / ETI  
(Estimated Time of Interchange)

# TAF/TAP TSI Implementations <sup>1/2</sup>

## Railway Organisations

Railway organisation	Product	RSRD	Path Request		Path Details		Train Composition			Train Ready		Train Running		
			CZ	HU	CZ	HU	CZ	SK	HU	CZ	HU	CZ	SK	HU
BF Logistics; ODOS; Unipetrol RPA; SD - Kolejová doprava; AWT (Advanced World Transport); SPCHV; IDS Cargo; Express Group; Prvá Slovenská Železničná; Railtrans International; Petrolsped; Carbo Rail; MMV; Floyd	EVAL; KLWP; IS OLTIS	✓	✓	✓	✓	✓	✓	✓	✓	✓	✓	✓	✓	✓
		✓ implemented			✓ in progress									



# TAF/TAP TSI Implementations <sup>2/2</sup>

## Railway Organisations

Railway organisation	Product	Company Reference Files	Location Reference Files	RSRD	Path Request	Train Identifiers	Infrastructure Reference Notice Database	Train Composition	Train Ready	Train Running
SŽDC (Czech IM)	KAFR; REVOZ; KADR; DOMIN; CDS; GRAPP; APORT; KAPO; DW; ETD	✓	✓	✓	✓	✓	✓	✓	✓	✓
ČD Cargo (Czech „national“ freight RU)	EMAN; DISK OŘ; KASO; APS	✓	✓		✓	✓	✓	✓	✓	✓
ČD (Czech „national“ passenger RU)	APS	✓	✓		✓	✓		✓	✓	
HitRail	HEROS				✓			✓		

# EUAR TAF/TAP TSI Verification

- OG products using TAF TSI have been or are being verified by EUAR with regard to the compliance with the TAF TSI Regulation No. 1305/2014 and its Technical Documents.
- The verification process encompasses products dedicated both for the RUs and IMs.

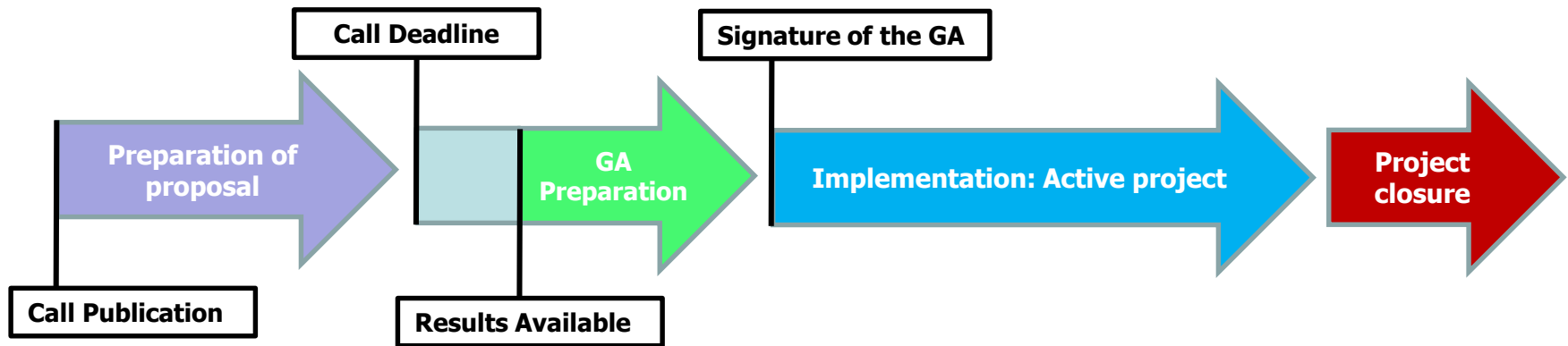


## OG - RNE Cooperation Contract

- OG and RNE has signed the Common Components System Supplier License and Service Agreement.
- OG takes over responsibility for installation, operation and support with regard to the CI.
- The implication of the Agreement brings both the technical and economic synergies for the companies using OG products.



# Project Life-cycle



# OLTIS CEF Experience

## Benefits

- Possibility to co-finance the implementation process
- Clear guidance and established boundaries during the preparation phase of the proposal
- Very good communication with INEA's Project Officers
- Simpler administration and legal processes compared to other funding programmes (amendments, budget transfers, etc. )



# OLTIS CEF Experience

## Lessons Learned

- Proposal preparation is time and cost consuming and not all proposals are successful
- Finding potential for synergies with other funding programmes
- Setting up minimum-size project thresholds may demotivate SMEs (and smaller private operators)



# Thank you for your kind attention

oltis group



Co-financed by the European Union  
Connecting Europe Facility

**Contact information:**

Kamila MESTICKÁ

Project Coordinator

[kamila.mesticka@oltisgroup.cz](mailto:kamila.mesticka@oltisgroup.cz)