

7th ERA TAF TSI Regional Workshop  
(Romania, Bulgaria, Greece)

## **Content of the TAF TSI: Functions and legal provisions for the Wagon Keepers**



**ERA Telematics Team**

**Bucharest, 7-8 March 2018**

# TAF TSI Regulation - Wagon Keepers Functions



## TAF TSI Regional **W**orkshop

## Technical Specification for Interoperability relating to the Telematics Applications for Freight subsystem of the rail system in the European Union of 11 December 2014



7th ERA TAF TSI Regional Workshop (Romania, Bulgaria, Greece)

Planning...

Operation...

After...

Consignment  
Note

Wagon  
trip plan

Path  
Allocation

Train  
Preparation

Train  
Running  
Forecast

Wagon  
Movement

Post  
Trip

- Wagon loads
- Release time of the wagons

- Services in terms of price and transit times
- Location, status and the wagon / Intermodal unit related estimated time of arrival "ETA")

- Open Access
- One Stop Shop

- Train Composition

- Train Running Information
- Service Disruption Information

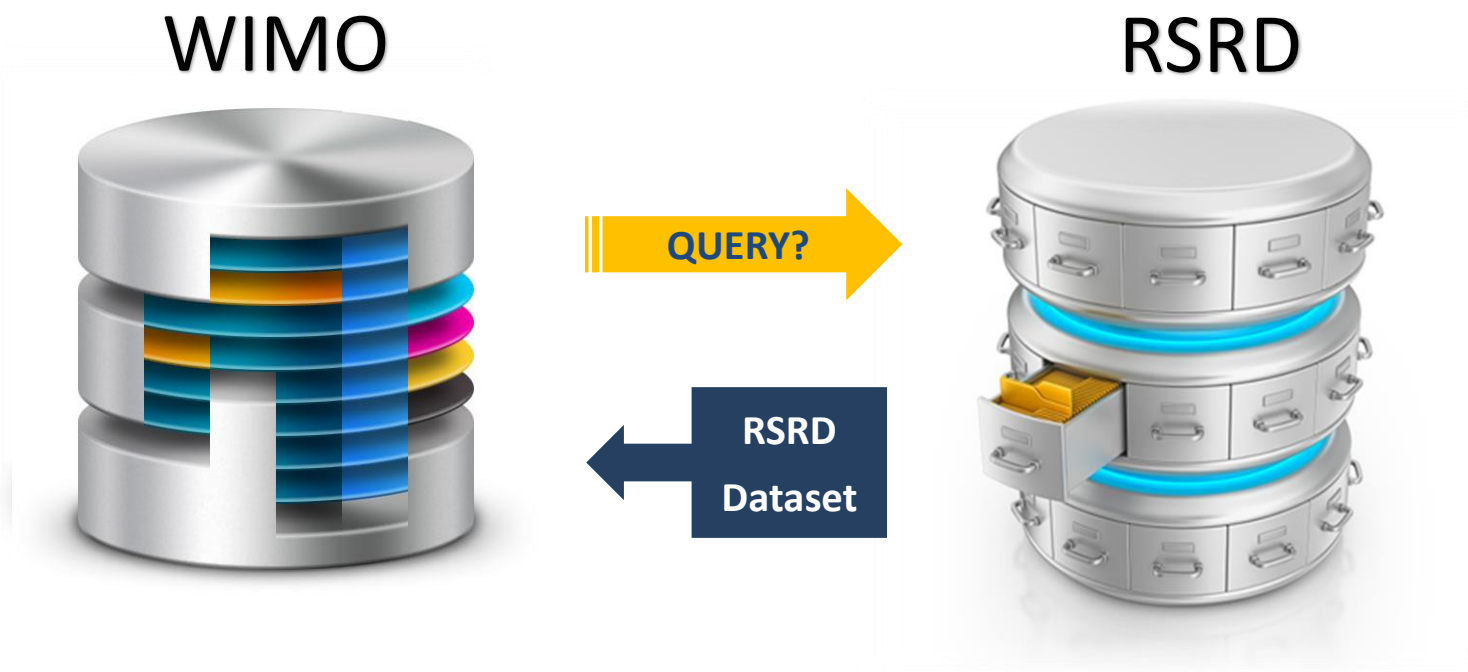
- Estimated Time of Arrival (ETA) and interchange (ETI)
- Wagon events

- To improve the quality of the transport service and productivity

- Wagon Keepers and Intermodal Unit Operators



- Wagon Keepers have to exchange their administrative and technical Rolling Stock data with the RUs. This exchange is performed via the Rolling Stock Reference Database (abbreviated as „RSRD“).



## › Rolling Stock Reference Database

Content must be available to all Service Providers (IM, (L)RU, Logistics Provider and Fleet Managers)



- › **Administrative data:** regarding certification and authorisation aspects such as
  - EC certification,
  - Registration in the 'home' State,
  - Date put into service in the state of registration,
  - Registration in other countries for the use on their national network,
  - etc
  
- › **Design data:** which shall include all constitutive (physical) elements of the rolling stock, including characteristics related to the environment, and all information that is expected to remain valid throughout the life of the rolling stock



## Expected benefits for Railway Companies:

- **Standardized wagon data** information content can be easily exchanged with business partners.
- Data in line **with ERA - OTIF** registries: harmonization of dataset of OTIF and ERA datasets (XSD).



**Thank you very much for your kind attention!**

**Your ERA TELEMATICS TEAM**

[kornel.nagy@era.europa.eu](mailto:kornel.nagy@era.europa.eu)

[mickael.varga@era.europa.eu](mailto:mickael.varga@era.europa.eu)





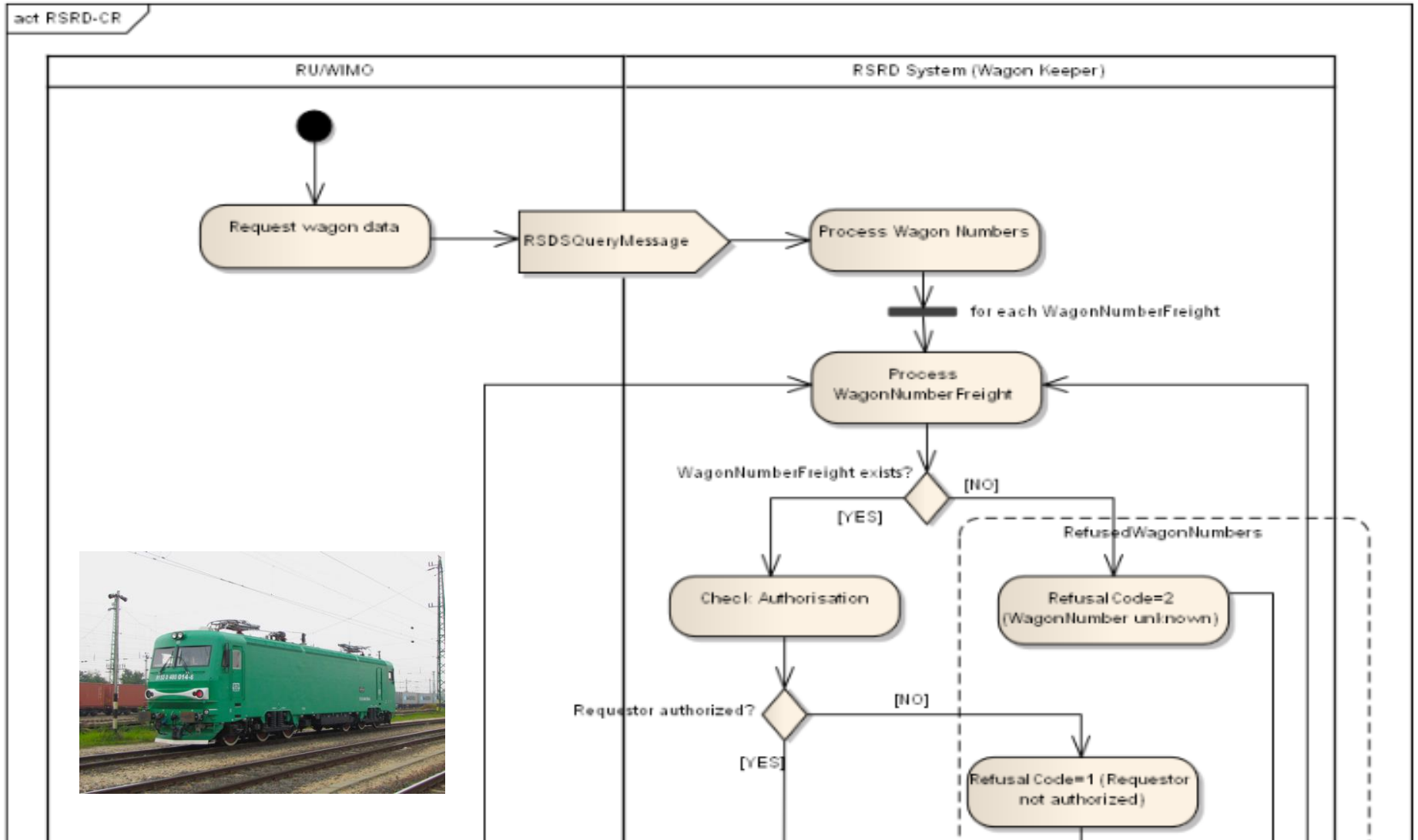
Making the railway system work better for society.

Follow us on Twitter: [@ERA\\_railways](https://twitter.com/ERA_railways)



# TAF TSI R regional W workshop

**Back – Up Slides**



# Data exchange between RSRD and WIMO (II)

