

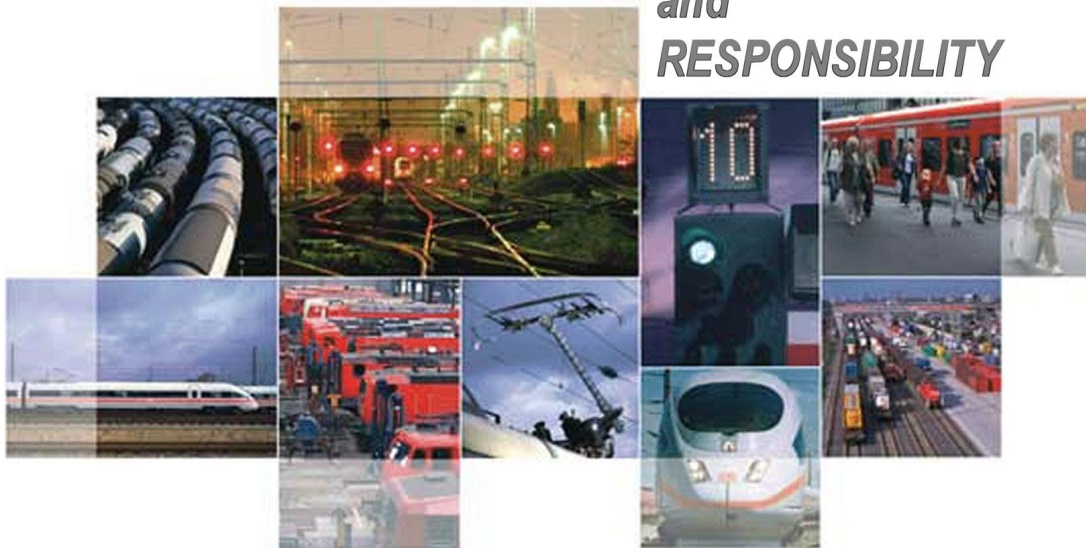


Eisenbahn-Bundesamt
Federal Railway Authority

Federal Railway Authority Report

pursuant to Article 18 of the Directive on safety on the
Community's railways
(Directive 2004/49/EC, 'Safety Directive')
on the activities of the safety authority

***COMPETENCE
and
RESPONSIBILITY***



Report Year 2006



Eisenbahn-Bundesamt
Federal Railway Authority

Published by:

Federal Railway Authority

Vorgebirgsstraße 49

53119 Bonn

Germany

www.eisenbahn-bundesamt.de

As at: September 2007



Contents:

	Page
A.1. Scope of the report	4
A.2. Summary	5
B. Introduction.....	6
C. Organisation	7
D. Development of railway safety.....	9
1. Initiatives	9
Table D.1.1. Safety measures triggered by accidents / precursors to accidents.....	9
Table D.1.2. Safety measures triggered by other factors	11
2. Detailed analysis of trends	14
E. Important changes to legal and regulatory provisions.....	15
F. Development of the safety certificate and safety licence	16
G. Inspection of rail transport undertakings and infrastructure operators.....	17
H. Decisions – Priorities – Safety recommendations.....	22

Annexes:

Annex A – Information on the structure of the railways.....	24
Annex B – Organisational diagram.....	34
Annex C – CSI	37
Annex D – Important changes to legal and regulatory provisions	43
Annex E – Drawing up safety certificates and safety licences	44



A.1. Scope of the report

The Federal Railway Authority (Eisenbahn-Bundesamt, EBA) is the safety authority for railways in Germany and, as such, is responsible for carrying out all tasks resulting from the Directive on safety on the Community's railways (2004/49/EC, 'Safety Directive'):

- Issuing commissioning licences for subsystems in accordance with the interoperability guidelines for the trans-European high-speed rail system (pursuant to Directive 96/48/EC) and the conventional trans-European rail system (pursuant to Directive 2001/16/EC)
- Monitoring operation and maintenance of subsystems and compliance with basic requirements by the interoperability components
- Issuing commissioning licences for vehicles that have not yet been the subject of a Technical Specification for Interoperability (TSI)
- Issuing safety certificates for rail transport undertakings and safety licences for rail infrastructure undertakings
- Looking at and refining rail safety law, including national safety provisions
- Entering vehicles in the National Vehicle Register

The EBA performs these tasks for the entire German rail network, apart from what are referred to as 'Regional transport networks' and 'Regional railways'. This report covers the activities of the EBA in carrying out the tasks of a safety authority pursuant to the Safety Directive. However, it does not include all of the additional tasks that the EBA performs, such as planning for operational equipment for the State railways, helping to finance construction work in accordance with the Federal Railway Development Act (BSchwAG) or planning, approving and monitoring magnetic levitation railways.



A.2. Summary

The overall purpose of this report is to convey information on the performance of the Eisenbahn-Bundesamt (EBA), acting as the National Safety Authority pursuant to the Directive on safety on the Community's railways (2004/49/EC, 'Safety Directive'). This report is aimed at stakeholders in the German and European railway market and the interested public.

The EBA was founded in 1994 during the reform of German railways as one element of this reform. When transforming the former state railways Deutsche Bundesbahn and Deutsche Reichsbahn into the private undertaking Deutsche Bahn AG, sovereign tasks like e.g. the homologation of vehicles and track or public financing of investments were assigned to the EBA. Since 1994 the EBA has acted as an independent authority within the scope of the German Federal Ministry of Transport, Building and Urban Affairs. Its headquarters are located in Bonn, while most of the approximately 1.300 employees work in twelve branch offices at fifteen locations throughout Germany.

Building on the EBA's experience since 1994, it was a logical step to officially assign the tasks of a National Safety Authority pursuant to Article 16 of the Safety Directive to the EBA as well. This step was taken in April 2007 when the '*Fünftes Gesetz zur Änderung eisenbahnrechtlicher Vorschriften*' [the Fifth law amending railway regulations] entered into force and completed the implementation of the provisions of the Safety Directive into German law.

Parts A, B and C of this report and the related annexes contain global information on the railway system in Germany as well as details concerning the legal background, tasks and organisation of the EBA. Parts D to G focus on safety related issues:

- Chapter D enumerates important safety measures taken by the EBA in 2006, separated into measures resulting from an accident or precursors and measures with other triggers. Annex C contains a table of some CSI for 2006. A trend analysis will follow in 2007, as 2006 is the first issue of EBA's annual report.
- Part E of the report shows important changes in German railway legislation in the year 2006.
- Chapter F deals with safety certification and authorisation; annex E contains figures related to this topic. Due to the fact that the Safety Directive had not yet been implemented in 2006 this chapter only refers to safety certification pursuant to Directive 2001/14/EC.
- Chapter G outlines how supervision of Railway Undertakings and Infrastructure Managers was performed by the EBA in 2006. Again, as a result of the pending implementation of the Safety Directive in 2006, a clear line between audits and inspections pursuant to the Safety Directive cannot be drawn in the report for 2006.

The last part of this report (H) sums up the report and tries to give an outlook on the future activities and core topics for the EBA.



B. Introduction

General preamble

This annual report provides information on the activities carried out by the EBA as a safety authority pursuant to the Safety Directive in Germany. It is primarily aimed at the railway sector in Germany and Europe, but also at representatives from other areas of politics, business and the press and interested members of the general public.

The EBA is the monitoring and licensing authority for the State railways (EdB), magnetic levitational railways and rail transport undertakings (EVU) based abroad for the territory of the Federal Republic of Germany. It was founded as an independent, one-stop higher Federal authority within the Federal Ministry for Transport, Construction and Town Planning (BMVBS) when the railway system was restructured in 1994.

Information on the structure of the railways

On 31.12.2006, the rail network in Germany consisted of a total of about 38 000 kilometres of track, of which about 20 000 kilometres were connected up to Germany's standard mains system (15 kV, 16 2/3 Hz). This network of track is operated by a total of around 160 public rail infrastructure undertakings. Around 34 000 kilometres of track are operated by DB Netz AG alone, the largest infrastructure operator in Germany.

Over 350 public rail transport undertakings are licensed under Article 6 of the General Railway Act (AEG) to provide rail transport services on Germany's public rail network, this corresponding to a licence pursuant to Directive 95/18/EC on the licensing of rail transport undertakings. Foreign rail transport undertakings also operate in Germany on the basis of a licence acquired abroad in accordance with Directive 95/18/EC.

Annexes

A map of the rail network in Germany is attached to this report (**Annex A.1**). There is also a list of rail transport and rail infrastructure undertakings licensed in Germany (**Annex A.2**).



C. Organisation

The EBA is, as already mentioned in the introduction, in accordance with Article 2(1) of the State Rail Transport Management Act (BEVVG), an independent, one-stop higher Federal authority within the Federal Ministry for Transport, Construction and Town Planning (BMVBS). It is managed by its president.

The specific tasks of the EBA are defined in Article 3 of the State Rail Transport Management Act. Accordingly, the EBA is responsible for the following:

1. Planning for operational equipment for the State railways,
2. Inspecting the railways,
3. Inspecting construction of operational equipment for the State railways,
4. Issuing and revoking operational licences,
5. Exercising its own authority and inspection and participation rights pursuant to other laws and regulations,
6. Preparing and carrying out agreements pursuant to Article 9 of the Federal Railway Development Act,
7. In accordance with Article 5(1)(g) of the General Railway Act, carrying out expert investigation into dangerous rail incidents,
8. Appropriating State funds to promote rail transport and to promote the combination of rail transport with other means of transport.

For the purposes of carrying out its tasks pursuant to Article 3 of the State Rail Transport Management Act, the EBA is divided into a head office in Bonn and 12 sub-offices in 15 locations throughout Germany. The EBA's head office has four departments (Head Office Services, Infrastructure, Vehicles/Operation and Finance), each with subsidiary sections, which are at the same time responsible for the five specific areas in the sub-offices. In 2006, the EBA employed a total of 1,335 staff. An organisational diagram of the EBA and an overview of the locations of the sub-offices is given in **Annex B.1**.

The EBA has been set up as the higher Federal authority within the Federal Ministry for Transport, Construction and Town Planning and is therefore answerable to the Federal Ministry for Transport, Construction and Town Planning. Alongside the EBA, two other bodies have responsibilities in the railway sector in Germany:

Eisenbahn-Cert (EBC), as the Named Interoperability Office for the conventional and the high-speed rail system sector pursuant to Directives 96/48/EC and 2001/16/EC, checks and certifies compliance with European rules by interoperability components and subsystems of the rail system.

The **Federal Network Agency (Bundesnetzagentur, BNetzA)**, as a regulatory office pursuant to EC Directive 2001/14, monitors non-discriminatory network access in Germany. The Federal Network Agency also regulates the electricity, gas, post and telecommunications markets and is therefore organisationally answerable to the Federal Ministry for the Economy and Technology. However, specialist monitoring in



the rail regulation sector is carried out by the Federal Ministry for Transport, Construction and Town Planning.

An illustrative representation of the situation on 31.12.2006 is attached to this annual report in **Annex B.2**. An overview of the cooperation between the Named Office and the EBA for issuing commissioning licences for structural subsystems is given in **Annex B.3**.

Changes after the reporting period:

When the fifth law amending the railway regulations came into force, another independent office was set up in the Federal Ministry for Transport, Construction and Town Planning with the creation of a body responsible for investigating accidents, this body managing and being responsible for investigating accidents in accordance with Chapter V of the Safety Directive.



D. The development of rail safety

1. Initiatives to maintain/improve safety

This section contains a list of the measures decided on and taken by the EBA in 2006 to maintain or improve safety on the railways. EBA measures based on specific events such as accidents are shown in Table D.1.1., while EBA measures triggered by other factors (such as findings during inspections) are shown in Table D.1.2.

Table D.1.1. Safety measures triggered by accidents/precursors to accidents

Safety measure decided on	Accidents/Precursors triggering the measure		
	Date	Place	Description of the event
Brake shoes lacking dimensional stability			
<p>A larger number of similar brake shoes were immediately checked; this revealed that almost all lacked the required dimensional stability.</p> <p>As a result:</p> <ol style="list-style-type: none">1. The company selling them was requested to inform immediately those customers who had bought the brake shoes in question and to take appropriate remedial action.2. Vehicle owner and rail transport undertaking associations based in Germany were informed of the situation and asked to tell their members so that they could carry out corresponding checks on their vehicles.3. The national railway supervisory authority and the international safety authorities (members of the ILGGRI) were also informed.	04.07.2006	Düsseldorf	<p>On 04.07.2006, a tank wagon lost a brake shoe insert while travelling through Düsseldorf-Flughafen station. A traveller standing on the adjacent platform was hit and seriously injured by the flying brake shoe insert.</p> <p>Cause:</p> <p>The brake shoe used was not dimensionally stable. The key used for fixing the brake shoe insert in the brake shoe could only be inserted with considerable force. The resulting force of the key on the key slot bridge of the brake shoe insert caused the latter to come off.</p> <p>Owing to the retaining and guiding cams formed on the brake shoe insert, it was held in position despite the fact that the key slot bridge between the brake shoe and the running surface of the wheel had come off. Only after wear and tear of the brake shoe insert had over time increased the distance (brake shoe clearance) from the running surface of the wheel could it work loose sideways and fly off out of the brake shoe owing to the vibrations produced when the train was moving.</p>



Unintentional opening of unloading traps			
Vehicle owners have been told that they may only operate these vehicles, before they have been refitted with an overriding safety feature, if closure of the control valve is guaranteed through additional mechanical locking means.	19.08.2004; 04.01.2006; 21.11.2006	Meggen; Treis-Karden and Bullay; Roten- burg/Wümme	<p>On a number of Falns 180 goods wagons, the hydraulically operating unloading traps were opening unintentionally while the train was in motion. This has caused considerable damage when trains have been colliding with the edge of the platform. Nobody has been injured.</p> <p>Cause: Owing to stiffness in the operating shafts and the lever connectors and faulty spring devices, the slides in the hydraulic control valves were no longer returning exactly to the middle setting after the last closure order. As these vehicles did not have an overriding safety feature (preventing an unwanted build-up of pressure at the control valve inlet), pressure could gradually build up in the operating cylinders owing to leakages into the control valves, which caused the traps to open.</p>
Cracks in axles			
<p>As an immediate measure, based on an investigation into the cracks, ultrasound testing periods of less than 10,000 km were ordered. The following two long-term solutions have been pursued:</p> <ol style="list-style-type: none"> 1. Rejection of the understanding of the fatigue strength for axles made of the material A5T and 2. Calculation of operating strength. I.e. replacing axles after a certain load (time or distance). <p>However, the operator decided to replace them with axles made of a better-known material, retaining the fatigue strength estimate.</p>	July 2004	Finding at the factory, EBA notification on 09.08.2004	<p>After only travelling about 470,000 km, cracks were found in the axle of a VT 612 during a scheduled ultrasound check. Subsequently, other cracks were found in VT 611/612 vehicles, bringing into question the fatigue strength of these axles.</p> <p>Cause: Insufficient knowledge of the strength characteristics of the A5T axle material used.</p>



Table D.1.2. Safety measures triggered by other factors

Safety measure decided on	Description of the factor triggering the measure
Traces of abrasion on axles	
<p>Together with the owners of vehicles and the manufacturer of the bogie, an upgrade plan was drawn up for the vehicles in question. The z3 measure is being corrected therein and the brake lever connectors are being replaced with geometrically modified connectors. In addition, the axles are being brought up to standard (smooth surface and protection against corrosion). Owing to the large number of vehicles affected, this plan is to be carried out during regular checks so that all vehicles are upgraded within at least 4 years.</p> <p>In order that all vehicles can nevertheless still operate, a fault tolerance plan has been drawn up by experts for the period until upgrade.</p>	<p>During vehicle inspections carried out in the middle of 2005, a number of tank wagons were found to be showing traces of abrasion in the middle of their axles. This is not allowed in accordance with the technical rules because it damages the protection against corrosion of the axles. The resultant corrosion reduces the strength of the axle in exactly the same way as the stressing effect during abrasion.</p> <p>Cause: Fault during the manufacture of the bogie.</p>
Fitting sections of track with train radio	
<p>Instructions to continue the GSM-R fitting programme:</p> <p>In accordance with Article 16(4) of the Railway Construction and Operation Order (EBO), sections of track used by passenger trains should be fitted with train radio. The following must be fitted with train radio equipment:</p> <ol style="list-style-type: none"> 1. Sections of track along which trains are allowed to travel at more than 160 km/h, 2. Sections of track without section blocking equipment used by <ol style="list-style-type: none"> a) Passenger trains or b) Trains travelling at more than 60 km/h. <p>In order to ensure implementation of this Railway Construction and Operation Order provision, a legally binding schedule for fitting sections of track with an approved train radio system has been drawn up for the remaining long-distance and local network not yet fitted with radio equipment.</p>	<p>The Federal Railway Authority's regular request for information revealed that many relevant sections of track had, at the beginning of 2006, still not been fitted with an approved train radio system.</p>



Growth of vegetation	
<p>Releasing electric cables to improve visibility of signals and maintain normal clearance:</p> <p>In accordance with Article 9 of the Railway Construction and Operation Order in conjunction with Annex 1 of the Railway Construction and Operation Order, normal clearance has to be maintained.</p> <p>During the railway inspection, breaches of Article 9 of the Railway Construction and Operation Order were discovered and immediate remedial action ordered.</p> <p>Furthermore, following the discovery that minimum signal visibility had not been achieved owing to the growth of vegetation, the immediate removal thereof was ensured through administrative law provisions.</p> <p>.</p>	<p>During specific and general railway inspections, growth of vegetation around electrical cables and growth preventing achievement of the prescribed minimum signal visibility or encroaching into the normal clearance was discovered.</p>
Observing of trains by rail staff on departure	
<p>The staff of a rail undertaking operating trains having foreign passenger carriages should not only observe activities on the train during departure through the window of the closed door (but instead, where possible, through the open door or open window), if the closing devices on the doors of the passenger carriages have not activated before the train pulls away.</p>	<p>When a train was departing, one of the doors was left open and someone was injured. After the doors were closed as normal, it was checked whether they were all shut and nobody was trapped. After this was verified, the departure signal was given as prescribed. As the doors on the foreign carriages in question were unlocked for up to 5 km/h, the door could then be opened prior to or on departure. Rail staff failed to notice this in time because of the limited observation of activities on the train.</p> <p>In accordance with German standards, in passenger trains the doors are already locked after having been closed by the central control unit and can no longer be opened. As a result, observation of activities on the train on departure could be reduced (only through closed window). However, in foreign carriages without the corresponding locking device, this limited observation of activities on the train on departure is inadequate.</p>



Instructions to foreign rail staff; changing staff during the journey	
<p>1. A rail transport undertaking was told that, when using staff of another rail transport undertaking on its trains, it was itself responsible for issuing any instructions to these members of staff in relation to all duties.</p> <p>2. The rail transport undertaking was also told that changes of train drivers during the journey should only take place on the open track and not in stations.</p>	<p>A rail transport undertaking using staff of another undertaking referred to the fact that requirements in relation to the applicable rules were being met by the other undertaking.</p> <p>As a result, a requirement when changing train drivers during the journey was not being met. If a change of staff during the journey is unavoidable (in long journeys without stops), this change has to take place under undemanding operating conditions and therefore on the open track.</p>



2. Detailed analysis of trends

Annex I of the Safety Directive sets out Common Safety Indicators (CSIs) that the safety authorities give details of in their annual reports. The various categories of the CSI include:

- Number of accidents;
- Number of fatalities;
- Number of people injured;
- Number of precursors (forerunners) to accidents;
- Costs of all accidents, time spent on safety and
- Technical safety of the infrastructure and its implementation and safety management.

The state of rail safety should be monitored and assessed by monitoring changes in the safety indicators. The safety authority should account for recognised CSI trends and – if safety of the rail system is impaired – take the necessary measures to reverse these trends. The 2006 annual report contains the first CSI figures and hence no analysis of trends at this stage. An analysis of trends will be carried out for the first time in the 2007 annual report.

Data on the individual CSIs for report year 2006 and the definitions used by the EBA are given in **Annex C** of this report.



E. Important changes to legal and regulatory provisions

During the reporting period, the following important changes were made to railway law in Germany:

Acceleration of Infrastructure Planning Procedures Act

The Acceleration of Infrastructure Planning Procedures Act of 9.12.2006, relating to various sectors, contains provisions on road, waterway and energy law in addition to railway regulations. The most important change in railway law is the revision of the railway infrastructure planning procedure as a result of the new Articles 18 to 18(e) of the General Railway Act. A number of provisions have also been amended. For example, the Federal Administrative Court has been given jurisdiction in respect of certain procedures at first instance.

First law amending the General Railway Act (AEG)

The first law amending the General Railway Act of 13.12.2006 contains the following provisions implementing the Directive amending the interoperability Directives (Directive 2004/50/EC):

- The EBA is responsible for keeping the National Vehicle Register in Germany (implementing the requirements under Article 14(4) of interoperability Directives 96/48/EC and 2001/16/EC in Member States to ensure that each vehicle is given an alphanumeric identification code that is entered in a national register).
- Performing the tasks of a Named Office for both conventional and high-speed rail transport using the Eisenbahn-Cert (EBC) (implementing Article 20 of interoperability Directives 96/48/EC and 2001/16/EC).
- Conditions for the transfer of responsibilities of a Named Office to private undertakings by the EBA (implementation of Article 20(2) in conjunction with Annex VII of interoperability Directives 96/48/EC and 2001/16/EC).

Annex D contains a table giving an overview of the main details of the legal and regulatory changes occurring during the reporting year.



F. Development of the safety certificate and safety licence

1. National law – Starting date - Availability

During the reporting period, the EBA has not yet issued any safety certificates to rail transport undertakings or safety licences to track operators pursuant to the Safety Directive. The Safety Directive was only incorporated into national law in 2007. This report therefore does not yet contain any data on these certificates to be issued pursuant to the Safety Directive. During the reporting period, the EBA has issued safety certificates pursuant to Directive 2001/14/EC.

As national safety regulations, the provisions are applicable in accordance with the communication from the government of the Federal Republic of Germany to the European Commission of 28 April 2006 on relevant national safety provisions for the rail system in Germany pursuant to Article 8(2) of Directive 2004/49/EC. This communication also lists the sources of the individual provisions.

2. Figures

Annex E contains a summary of various figures on safety certificates and safety licences. For the reasons already given in the previous paragraph, information is only provided on the safety certificates issued during the reporting year pursuant to Directive 2001/14/EC. Future annual reports will contain all necessary details on safety certificates and safety licences issued pursuant to the provisions of the Safety Directive.

3. Aspects of procedural law

As soon as the EBA issues safety certificates and safety licences pursuant to the Safety Directive, information on the procedure per se and any problems encountered will then be provided.



G. Inspection of rail transport undertakings and infrastructure operators

The Safety Directive had not yet been implemented in the reporting period. As a result, no details can yet be given on audits and inspections pursuant to the provisions of this Directive. The following section explains how rail transport undertakings and infrastructure operators in Germany were inspected by the Federal Railway Authority in 2006. In 2006, there were about 150 staff available to the Federal Railway Authority for carrying out inspections in the areas described below.

Inspection of permanent-way, structural and other engineering equipment and machinery (Section 21)

Monitoring of track operators to ensure that equipment meets prescribed standards and complies with rules for the inspection and servicing of equipment is carried out by Section 21 of the Federal Railway Authority during inspections of permanent-way, structural and other engineering equipment and machinery (IOHM).

Railway inspections ensure that the General Railway Act and the legal regulations based thereon and accepted rules of engineering are being complied with even when approved equipment is being used. The main cornerstone of the railway inspection is checking that the rail transport undertaking is meeting the safety obligations laid down in Article 4(1) of the General Railway Act. General monitoring during the railway inspection is basically limited to samples.

In this respect, the Federal Railway Authority distinguishes between three kinds of monitoring in accordance with the Administrative provisions on the inspection of structural and mechanical rail equipment and performance of the technical inspections of safety in the workplace ('VV TAU', view or download it on www.eisenbahn-bundesamt.de/service/ref21/s_21.htm):

- a) Monitoring of undertakings (UbÜ)
- b) Monitoring of installations (ObÜ)
- c) Special monitoring (SÜ)

This division into three areas is aimed at achieving the most flexible and reliable assessment of maintenance activities carried out by the State railways (EdB). The following applies in relation to the individual kinds of monitoring:

- a) The monitoring of undertakings (audit) is used to assess the maintenance organisation of the operator's offices responsible for equipment. This kind of monitoring is usually carried out pursuant to Annex 6 of the Administrative provisions on the inspection of structural and mechanical rail equipment and performance of the technical inspections of safety in the workplace. It is basically an audit of the maintenance organisation in which compliance with rules, including internal rules, for carrying out maintenance in accordance with DIN 30541 (servicing, inspection, repair) is checked.



- b) The monitoring of installations (inspection) means an estimate can be made of the condition of equipment on site and the staff responsible for maintenance can be monitored. Monitoring of this kind is also often carried out in respect of the different kinds of work. An overview of the frequency of checks and the activities monitored is given in Annex 6 of the Administrative provisions on the inspection of structural and mechanical rail equipment and performance of the technical inspections of safety in the workplace – a description is not given here.
- c) Special monitoring is used to build up a full picture of the technical condition of equipment from the perspective of stability, operational safety, railworthiness, fire resistance, environmental protection and, if applicable, also maintenance organisation. The EBA reserves the right to carry out special monitoring in cases in which the monitoring of undertakings and/or the monitoring of objects are unable to produce a clear assessment of equipment. Special monitoring can also be carried out, inter alia, after accidents or unusual events.

The process carried out by the inspection authorities is described in Annex 2 of the Administrative provisions on the inspection of structural and mechanical rail equipment and performance of the technical inspections of safety in the workplace.

Table G.1. Frequency of checks carried out in 2006

	Monitoring of undertakings	Monitoring of objects	Special monitoring
Carried out	830	2884	408

The monitoring of the State railways carried out in 2006 essentially revealed no serious safety issues. Where faults were discovered during monitoring, instructions were occasionally (in about 3% of the audits and inspections) given to improve safety and order in relation to the rail equipment. Faults were found in relation to:

- Vegetation
- Documentation on the condition of equipment and assessments carried out

Inspection of signalling, telecommunication and electrical equipment (Section 22)

Section 22 of the Federal Railway Authority is responsible for inspecting signalling, telecommunication and electrical equipment (STE). The inspection is carried out in accordance with the principles laid down in the Administrative regulations for the inspection of railway signalling, telecommunication and electrical equipment 'VV TAU-STE'. These Administrative regulations can be viewed and downloaded from the Federal Railway Authority website:

http://www.eba.bund.de/Service/ref22/s_22.htm



A distinction is also made here in relation to signalling, telecommunication and electrical equipment regarding monitoring of undertakings and monitoring of installations in accordance with the Administrative regulations for the inspection of railway signalling, telecommunication and electrical equipment. Signalling, telecommunication and electrical equipment with safety functions is distinguished from equipment without safety functions.

The railway inspection carried out alongside general monitoring is basically limited to samples. On the other hand, monitoring may also be required as a result of the particular threat to public safety and order and the operation of the railways (e.g. for signalling installations and electrical equipment) during compulsory audits.

Table G.2. Frequency of checks carried out in 2006

	Signalling	Telecommuni- cation	Electrical equipment
Carried out	2782	1010	566

Monitoring activities relating to signalling, telecommunication and electrical equipment focused, inter alia, on hot box detectors, cutting back vegetation around railway equipment, fitting linearly operating strike-out devices on level crossings and fitting out stretches of track with an approved train radio system.

The monitoring of the State railways carried out in 2006 essentially showed no serious safety faults. Where faults were discovered that had safety implications, instructions were given to improve safety and order in relation to the rail equipment.

Operational railway inspection (Section 34)

Section 34 of the Federal Railway Authority is responsible for carrying out the operational railway inspection. It is an examination of an undertaking's systems or of specific installations.

The examination of an undertaking's systems includes an examination of the

1. Organisation and documentation of safety management systems,
2. Organisation and delegation of functions involving safety responsibilities,
3. Key components of safety organisation/safety order and
4. Instructions to railway operation managers.

The examination of an undertaking's systems is usually carried out in cooperation with other EBA departments by special agreement.

The examination of specific installations includes the following:



1. Organisational units of rail infrastructure undertakings and rail transport undertakings responsible for planning, controlling and monitoring with implications for operational safety,
2. Organisational units of rail infrastructure undertakings and rail transport undertakings responsible for staff management and planning with implications for operational safety,
3. Organisational units of the railway operation managers of rail infrastructure undertakings and rail transport undertakings,
4. Organisational units charged with monitoring disruption in rail services,
5. Locally manned offices for the operation of signalling equipment and installations (e.g. signal box, gatekeeper post),
6. Offices responsible for train formation, handling and preparation,
7. Visiting sites and travelling along sections of track on inspection journeys,
8. Visual inspections of standard and auxiliary vehicles and their loads,
9. Travelling up front with the driver of tractive units, driving trailers and auxiliary vehicles,
10. Travelling in passenger trains monitoring safety devices, external doors and the departure procedure,
11. Jobs within the risk area of the track relating to operational management and protection against threats to rail services.

After faults were discovered during inspections in the following areas:

- Monitoring rail operation in operational offices,
- Track inspection journeys,
- Monitoring tractive unit and train staff,
- Monitoring vehicles,

instructions were issued to rail transport undertakings in 378 cases, these instructions mostly relating to the remedying of faults contravening rules, or relating to compliance with existing safety rules. Special safety measures that have been taken in addition to existing rules are mentioned in Section D, Point 1.

Inspection of railway vehicles (Section 35)

Section 35 of the Federal Railway Authority is responsible for inspecting railway vehicles in accordance with the Administrative regulations for inspecting rail vehicles 'VV-EbAu (F)'. These Administrative regulations can be viewed and downloaded from the Federal Railway Authority website:

http://www.eba.bund.de/Service/ref35/s_35.htm

The extent and methods of monitoring are characterised by the need, as the supervisory authority, to build up a reliable picture of the quality and extent of compliance with all technical and legal obligations by rail transport undertakings. In order to determine the extent to which rail transport undertakings are meeting their legal obligations under Article 4(1) of the General Railway Act in relation to safe constructions and safe vehicles, the EBA uses a system-based approach and carries out:

- Systematic examinations of organisations and undertakings,



- Systematic examinations of construction types and models, and
- Examinations of specific installations.

In the systematic examination of organisations, the procedures, responsibilities and structures set out by the State railways, applied by them and ensuring the safety of vehicles are examined in relation to their likely effectiveness. When carrying out systematic examinations of construction types and models, examinations differ according to type and model.

The aim of examining specific installations is to compare the actual and desired condition of vehicles in accordance with the relevant legal provisions and recognised rules of engineering (depending on the vehicle) and the examination of process-related factors like the existence of evidence, the implementation of safety management systems in relation to the vehicle, etc.

Furthermore, specific monitoring, investigations of serious accidents at the request of the accident investigation office and investigations of other dangerous incidents are carried out and measures are taken to avert the threat.

A detailed description of the process is given in the 'Administrative regulations for inspecting rail vehicles -EbAu(F)-'.



H. Decisions – Priorities – Results of safety recommendations

The monitoring and examinations of the rail transport undertakings and infrastructure operators carried out by the Federal Railway Authority in 2006 showed no serious safety issues. Where faults were discovered that had safety implications, the Federal Railway Authority issued instructions for the proper maintenance of railway equipment and vehicles and for the safe running of operations pursuant to Article 2(4) of the Railway Construction and Operation Order.

No safety recommendations were made in 2006. The main initiatives and measures taken by the Federal Railway Authority to maintain and improve safety standards are summarised in Section D, Part 1.

Based on the findings in 2006, no specific examinations were ordered in addition to regular monitoring.



Eisenbahn-Bundesamt
Federal Railway Authority

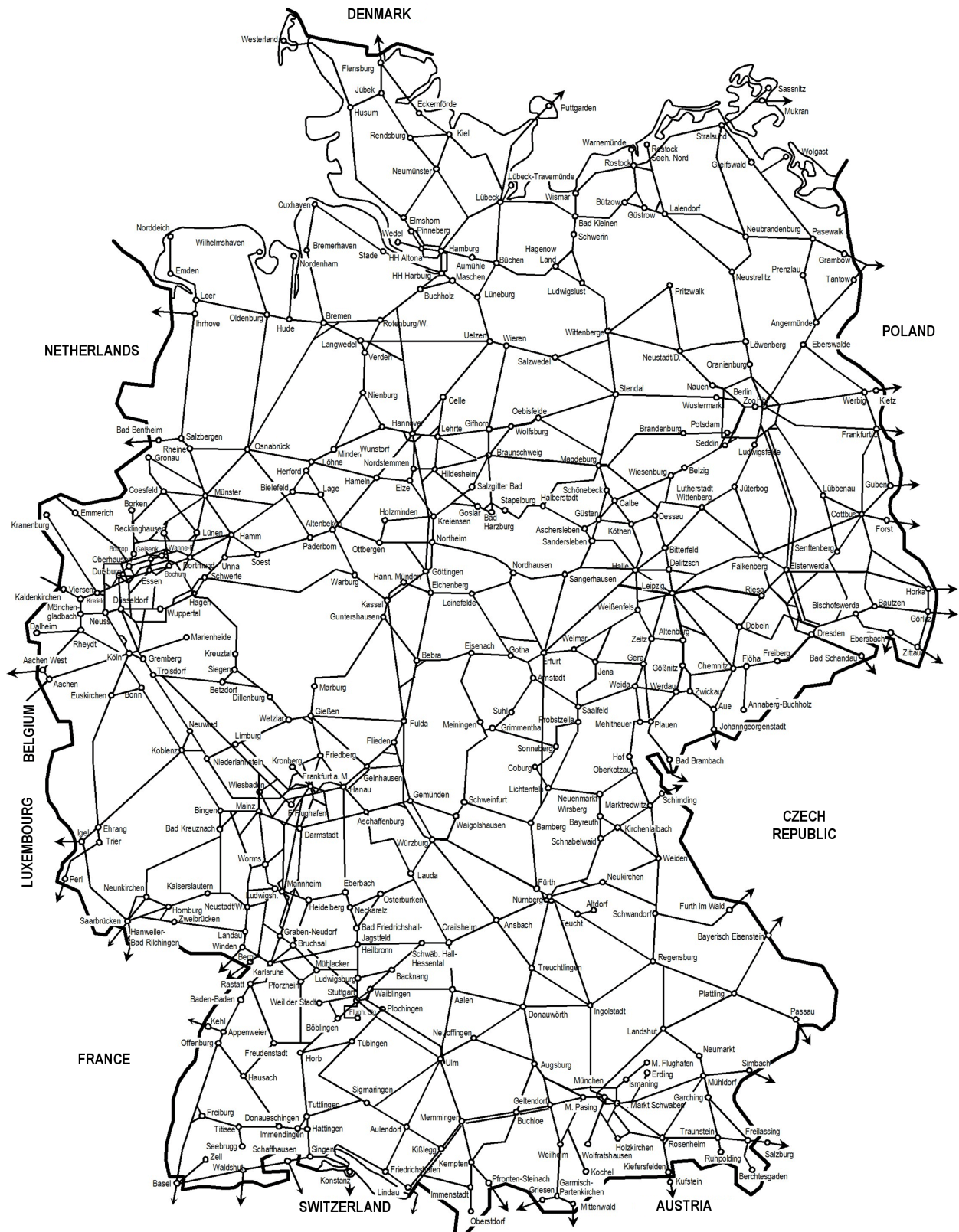
I. Annexes

- ANNEX A: Information on the structure of the railways
- ANNEX B: Organisational diagram of the National Safety Authority
- ANNEX C: CSI data – definitions used
- ANNEX D: Important changes to legal and regulatory provisions
- ANNEX E: Development of the safety certificate and safety licence – Figures



ANNEX A: Information on the structure of the railways

A.1. Map of the rail network





A.2. List of rail transport undertakings and infrastructure operators

Up-to-date lists of public rail transport undertakings and rail infrastructure undertakings - as well as plenty of other information - can be found on the Federal Railway Authority website:

http://www.eba.bund.de/Service/ref11/s_11_evub.htm

A.2.1. List of public rail infrastructure undertakings in Germany

Undertaking	Street	Code	Town	Infrastructure
Ablachtalbahnhof GmbH	Bleicherstr. 14	78467	Konstanz	Stockach - Mengen
AKN Eisenbahn AG	Rudolf-Diesel-Straße 2	24568	Kaltenkirchen	Neumünster Süd - Kaltenkirchen - HH-Eidelstedt; Elmshorn - Barmstedt - Ulzburg; HH-Bergedorf - Geesthacht - Krümmel
Albtal-Verkehrs-Gesellschaft mbH (AVG)	Tullastraße 71	76131	Karlsruhe	Rastatt - Freudenstadt; Karlsruhe - Bad Herrenalb; Ittersbach; Pforzheim - Bad Wildbad; Heilbronn - Grötzingen; Ubstadt - Menzingen/ Odenheim
Ankum - Bersenbrücker Eisenbahn GmbH	Bersenbrücker Str. 6	49577	Ankum	Ankum - Bersenbrück
Augsburger Localbahn GmbH	Friedberger Straße 43	86161	Augsburg	Augsburg circle line, links to Lechhausen, Pfersee, Haunstetten
Bahnbetriebsgesellschaft Mainschleifenbahn	Industriestr. 3	97332	Volkach	Seligenstadt - Volkach (Main)
Bahnbetriebsgesellschaft Stauden mbH	Oberer Schleisweg 11	86156	Augsburg	Gessertshausen - Markt Wald; Türkheim -
Bahnen der Stadt Monheim GmbH	Daimlerstraße 10	40789	Monheim am	Langenfeld (Rhld) - Monheim Blee/ Monheim Nord
Bayer Industry Service GmbH & Co. OHG	Gebäude L. 7	51368	Leverkusen	Köln-Mülheim - Berliner Str. - Leverkusen Bayer
Bayerische Regionaleisenbahn GmbH	Ludwigstr. 6	96052	Bamberg	Kitzingen-Etzwashausen - Gochsheim (Lower Fr.); Strullendorf - Schlüsselfeld
Bayerische Zugspitzbahn Bergbahn AG	Olympiastraße 27	82467	Garmisch-Partenkirchen	Garmisch-Partenkirchen - Zugspitze; 1000 mm, rack railway, 1650 V =
BayernBahn Betriebsgesellschaft mbH	Am Hohen Weg 30	86720	Nördlingen	Nördlingen - Dombühl; Nördlingen - Gunzenhausen; Landshut - Neuhausen
Bentheimer Eisenbahn AG	Otto-Hahn-Straße 1	48529	Nordhorn	Ochtrup-Brecht - Bad Bentheim - Nordhorn - Laarwald Grenze
Bergbahnen im Siebengebirge AG	Drachenfelsstraße 53	53639	Königswinter	Königswinter - Drachenfels, rack railway 1000 mm, 750 V=
Borkumer Kleinbahn- und Dampfschiffahrt	Georg-Schütte-Platz 8	26757	Borkum	Borkum island railway, 900 mm
Bremen-Thedinghauser Eisenbahn GmbH	Leester Str. 88	28844	Weyhe - Leeste	Bremen-Huchting - Kirchweyhe - Thedinghausen
Brohltal Eisenbahn GmbH	Kapellenstraße 12	56651	Niederzissen	Brohl - Engeln, 1000 mm
Chiemsee- Schifffahrt Ludwig Feßler	Seestraße 108	83209	Prien	Prien (Chiemsee) - Stock; 1000 mm
Dampfbahn Fränkische Schweiz e.V.	Pretzfelderstraße 21	91316	Ebermannstadt	Ebermannstadt - Behringsmühle
DB Netz AG	Theodor-Heuss-Allee 7	60486	Frankfurt am	National rail network
DB RegioNetz Infrastruktur GmbH	Stephensonstraße 1	60326	Frankfurt am	South-East Bavaria, Erzgebirge, Kurhessen, Westfranken, Oberweißbach
DB Station&Service AG	Köthener Straße 2-3	10963	Berlin	Only platforms (see separate list)
DE Infrastruktur GmbH	Speicherstr. 23	44147	Dortmund	Dortmund Gbf - Do- Remberg - Do-Hörde; Do-Nord - Do-Schüren
Delmenhorst - Harpstedter Eisenbahn GmbH	Am Bahnhof 3	27243	Harpstedt	Delmenhorst - Harpstedt; Werkstatt Harpstedt; Delmenhorst - Lemwerder
Dessauer Verkehrs- und Eisenbahngesellschaft mbH (DVG)	Albrechtstr. 48	06844	Dessau	Dessau - Wörlitz
Deutsche Museumseisenbahn GmbH	Steinstraße 7	64291	Darmstadt	Darmstadt Hbf - Bessunger Forsthaus (museum railway)
Deutsche Regionaleisenbahn GmbH (DRE)	Rudolf-Breitscheid-Straße 203	14482	Potsdam	Lüchow - Dannenberg Ost; Eilenburg Ost - Bad Schmiedeberg; Herzberg - Groß Leuthen; Forst - Simmersdorf
Deutsche Steinkohle AG (DSK)	Shamrockring 1	44623	Herne	Werne - Bockum-Hövel
Döllnitzbahn GmbH	Bahnhofstraße 2	04769	Mügeln	Oschatz - Kemmlitz und Nebitzschen - Glossen, 750 mm
Donnersberg-Touristik-Verband e.V. (DTV)	Uhlandstr. 2	67292	Kirchheimboland	Langmeil - Monsheim
Eifelbahn Verkehrsgesellschaft mbH	Rheinhöller 3	53545	Linz am Rhein	Linz - Kalenborn
Eisenbahn Logistik und Service GmbH (ELS)	Gewerbepark Ost 14	17235	Neustrelitz	Buschhof - Thurow
Eisenbahnen und Verkehrsbetriebe Elbe-Weser GmbH	Bahnhofstr. 67	27404	Zeven	Bremervoerde - Osterholz-Scharmbeck; Bremerhaven - Buxtehude; Bremervoerde - Rotenburg (Wümme); Tostedt - Wilstedt
Eisenbahnfreunde Wetterau e.V.	Postfach 12 12	61212	Bad Nauheim	Bad Nauheim - Münzenberg
EKO-Transportgesellschaft mbH (EKO-Trans)	Werkstraße 1	15890	Eisenhüttenstadt	Wiesenu - Eisenhüttenstadt
ekr Bahnlogistik & Bauüberwachung GmbH	Warener Straße 5	12638	Berlin	Staßfurt - Egeln
Emsländische Eisenbahn GmbH	Bahnhofstr. 41	49716	Meppen	Meppen - Emshafen; Meppen - Haselünne - Essen; Lathen - Werlte, Ocholt - Sedelsberg



Energiewerke Nord GmbH	Latzower Straße 1	17509	Rubenow	Schönwalde - Lubmin (ex KKW)
ESWE Verkehrsgesellschaft mbH	Gartenfeldstr.18	65189	Wiesbaden	Wiesbaden-Dotzheim - Dietz
EVS EUREGIO-Verkehrsschienenetz GmbH	Rüst 30	52224	Stolberg	Stolberg - Zurmühlen; Eschweiler - Frenz
Farge-Vegesacker Eisenbahn GmbH	Rödelheimer Bahnweg	60489	Frankfurt am	Bremen-Farge - Bremen-Vegesack
Feld- und Kleinbahn Betriebsgesellschaft gGmbH	Am Walde 22	23714	Bad Malente Gremsmühlen	Süderbarup - Kappeln
Fels Netz GmbH	Kalkwerk Hornberg	38875	Elbingerode	Blankenburg (Harz) - Königshütte (Harz), 25,000 V ~, 50 Hz
Flecken Bruchhausen-Vilsen	Lange Str. 11	27305	Bruchhausen- Vilsen	Bruchhausen-Vilsen - Asendorf, (museum railway), 1000 mm
Friesoyther Eisenbahninfrastruktur- Gesellschaft mbH	Mühlenstr. 12	26169	Friesoythe	Cloppenburg - Friesoythe
Gemeinde Dornum	Schatthäuser Str. 9	26553	Dornum	Norden - Dornum (museum railway)
Gemeinde Losheim am See	Merziger Str. 3	66679	Losheim am See	Merzig Ost - Losheim
Georgsmarienhütte Eisenbahn und Transport GmbH	Postfach 12 80	49110	Georgsmarienhü- te	Hasbergen - Georgsmarienhütte
Gesellschaft der Förderer der Museumseisenbahn Hamm e. V.	Schumannstraße 35	59065	Hamm	Welter Ramesohl - Lippborg-Heintrop (museum railway)
Gesellschaft zur Betreibung der Waldeisenbahn Muskau mbH (WEM)	Jahnstr. 53 (Haus A)	02943	Weißwasser	Bad Muskau - Weißwasser - Kromlau - Mühlrose, 600 mm
Görlitzer Oldtimer Parkeisenbahn e. V.	An der	02826	Görlitz	Parkeisenbahn Görlitz, 600 mm
Groß-Bieberau-Reinheimer Eisenbahn GmbH	Wersauer Weg 100	64401	Groß Biberau	Reinheim (Odenw) - Groß Bieberau
Hafen- und Bahnbetriebe der Stadt Krefeld	Oberstraße 13	47829	Krefeld	Krefeld - Bäckerpfad; Krefeld - Hafen
Häfen und Güterverkehr Köln AG (HGK)	Bayenstraße 2	50678	Köln	Hürth Fischenich - Berrenrath; Cologne Niehl - Benzelrath; Bonn - Cologne (Rhine railway), Bonn - Cologne (foothill railway); Merkenich - Cologne port
Härtsfeld-Museumsbahn e.V.	Dischinger Straße 11	73450	Neresheim	Neresheim - Sägmühle (museum railway), 1000 mm
Harzer Schmalspurbahnen GmbH	Friedrichstraße 151	38855	Wernigerode	Wernigerode - Drei Annen Hohne - Brocken; Nordhausen - Hasselfelde; Quedlinburg - Stiege; Drei Annen Hohne Eisfelder Talmühle; 1000 mm
Hellertalbahn GmbH	Bahnhofstr. 1	57518	Betzdorf/Sieg	Betzdorf - Haiger
Hersfelder-Eisenbahn AG (HEG)	Heinrich-Börner-Str. 10	36251	Bad Hersfeld	Phillipstal - Nippe
Hohenzollerische Landesbahn AG (HzL)	Bahnhofstraße 21	72379	Hechingen	Gammertingen - Kleinengstingen; Eyach - Hechingen - Sigmaringen
Hörseltalbahn GmbH	Adam-Opel-Straße 100	99817	Eisenach	Eisenach-Stadtfeld - Eisenach Opel
Hunsrückbahn e.V.	Bahnhofstr. 14	54411	Hermeskeil	Hermeskeil - Türkismühle
Ilmebahn GmbH	Dr.-Friedrich-Uhde-Str. 24	37574	Einbeck	Göttingen - Einbeck - Markoldendorf
Kahlgrund-Verkehrs-GmbH	Am Bahnhof 1	63825	Schöllkrippen	Schöllkrippen - Kahl (Main)
Kassel-Naumburger Eisenbahn AG	Wilhelmshöher Allee 252	34119	Kassel	Kassel Wilhelmshöhe Süd - Baunatal - Naumburg
Keolis Deutschland GmbH & Co. KG	Rheinstraße 4E	55116	Mainz	Alzey - Kirchheimbolanden; Bielefeld Ost - Hillegossen; Service equipment in Bielefeld-
Kommunalunternehmen Stadtwerke	Postfach 12 52	97196	Ochsenfurt	Ochsenfurt - O.-Mainlande
Kreisbahn Mansfelder Land GmbH	Ahlsdorfer Weg 10	06311	Helbra	Parkeisenbahn Vatterode; 500 mm
Kreisbahn Siegen-Wittgenstein GmbH (KSW)	Friedrichstraße 47	57072	Siegen	Siegen - Dreis Tiefenbach; Herdorf - Pfannenber
Kreisverkehrs- und Infrastrukturbetrieb St.	Mommstraße 21-27	66606	St. Wendel	Ottweiler (Saarl.) - Schwarzerden
Kuckucks-Bähnel Bahnbetriebs GmbH	Sommerbergstraße 3	67466	Lambrecht	Hinterweidenthal Ost - Bundenthal-Rumbach; Lambrecht - Elmstein
Landkreis Cuxhaven	Postfach	27470	Cuxhaven	Bremerhaven - Bad Bederkesa (museum railway)
Landkreis Konstanz	Benediktinerplatz 1	78467	Konstanz	Stahringen - Stockach
Lappwaldbahn GmbH	Am Bahnhof 4	39356	Weferlingen	Haldensleben - Weferlingen
Lüchow-Schmarsauer Eisenbahn GmbH	Königsberger Str. 10	29439	Lüchow	Lüchow-Süd - Schmarsau
Mansfelder Bergwerksbahn e.V.	Postfach 1155	06305	Klostermansfeld	Klostermansfeld - Hettstedt (museum railway), 750
Märkische Eisenbahngesellschaft mbH	Wehberger Straße 80	58507	Lüdenscheid	Plettenberg - Plettenberg Mitte
Märkische Museums-Eisenbahn e.V. (MME)	Postf 13 46	58813	Plettenberg	Köbbinghausen Hammer - Hünghausen (museum railway), 1000 mm
Mecklenburgische Bäderbahn Molli GmbH & Co	Am Bahnhof	18209	Bad Doberan	Kühlungsborn - Bad Doberan (museum railway), 900 mm
Mecklenburg-Pommersche Schmalspurbahn- Freunde e.V.	Dorfstraße 6b	17099	Schwichtenberg	Schwichtenberg - Uhlenhorst, 600 mm
Mindener Kreisbahnen GmbH	Karlstraße 48	32423	Minden	Minden - Hille Hafen; Minden - Kleinenbremen
Museumsbahn Schönheide e.V. (Gemeindeverwaltung Schönheide)	Hauptstraße 43	08304	Schönheide	Schönheide - Carlsfeld - Neuheide (museum railway) 750 mm
MVV OEG AG	Luisenring 49	68159	Mannheim	Weinheim - HD-Dossenheim; Weinheim - Mannheim-Käfertal - Heddesheim, Mannheim - Heidelberg; 1000 mm, 750 V =
NEB Niederbarnimer Eisenbahn AG	Georgenstraße 22	10117	Berlin	Berlin-Karow - Schmachtenhagen; Basdorf - Groß- Schönebeck; Abzw Schönwalde - Fa. Stadler
neg Niebüll GmbH	Bahnhofstraße 6	25899	Niebüll	Niebüll - Dagebüll, Niebüll - Süderlügum, Tornesch - Uetersen; Werkstatt Niebüll; Service equipment in Neumünster;
Neukölln-Mittenwalder Eisenbahn AG (NME)	Gottlieb-Dunkel-Straße 47/48	12099	Berlin	B-Neukölln - B-Rudow Nord - Teltowkanal;
Niederlausitzer Museumseisenbahn e.V.	Holsteiner Straße 37	03238	Finsterwalde	Finsterwalde - Crinitz (museum railway)



Niederrheinische Verkehrsbetriebe AG (NIAG)	Hornbergerstraße 113	47441	Moers	Moers - Rheinberg; Moers - Vluyn;
Norddeutsche Naturstein Rail GmbH (NNRail)	Altenhäuser Str. 41	39345	Flechtingen	Süpplingen - Dönstedt
Öchsle-Bahn AG	Postfach 16 62	88396	Biberach/ Riss	Ochsenhausen - Warthausen (museum railway), 750 mm
Osthannoversche Eisenbahnen AG (OHE)	Biermannstr. 33	29221	Celle	Soltau Süd - Döhle; Celle - Wittingen; Celle - Munster; Soltau - Lüneburg - Bleckede; Hützel - Winsen (Luhe) - Niedermarschacht; Wunstorf - Bokeloh; Werkstatt Uelzen
Osthavelländische Eisenbahn AG (OHE)	Schönwalder Allee 51	13587	Berlin	B-Spandau West - B-Spandau Johannesstift
Parkeisenbahn Chemnitz gGmbH	Küchenwaldring 24	09113	Chemnitz	Chemnitz park railway, circular route, 600 mm
Syratal park railway	Hainstr. 10	08523	Plauen	Plauen park railway, 600 mm, 220 V =
Planungs- und Entwicklungsgesellschaft Güterverkehrszentrum Emscher mbH	Am Westhafen 27	44653	Herne	GVZ Emscher - Wanne Westhafen
Prignitzer Eisenbahn GmbH (PEG)	Pritzwalker Straße 2	16949	Putlitz	Pritzwalk - Karow; Pritzwalk - Putlitz; Blankenberg (Meckl) - Dabel
Prignitzer Kleinbahnmuseum Lindenberg e.V.	Hauptstraße 7	16928	Lindenberg	Lindenberg - Vettin - Mesendorf, (museum railway) 750 mm
Regentalbahn AG (RBG)	Postfach 13 20	94234	Viechtach	Gotteszell - Viechtach; Kötzing - Lam
Regio Infra Service Sachsen GmbH	Carl-von-Ossietzky-Straße 186	09127	Chemnitz	Stollberg (Saxony) - St. Egidien; Neuoelesnitz - Lugau; Niederwiesa - Hainichen; Chemnitz - Stollberg (Saxony); Nossen - Freiberg
Regionalbahn Kassel GmbH	Wilhelmshöher Allee 25	34119	Kassel	Kaufungen (paper factory) - Helsa
Regionale Bahngesellschaft Kaarst - Neuss - Düsseldorf - Erkrath - Mettmann - Wuppertal mbH (Regional railway)	An der Regiobahn 15	40822	Mettmann	Neuss - Kaarster See; DD-Gerresheim - Dornap-Hahnenfurt
Regionalverkehr Münsterland GmbH	Krögerweg 11	48155	Münster	Rheine - Spelle; Altenrheine - Osnabrück
Regionalverkehr Ruhr-Lippe GmbH	Am Bahnhof 10	59494	Soest	Hamm - Welfer Ramesohl; Neheim-Hüsten - Sundern; Neheim-Hüsten - Arnsberg Süd
Rennsteig Bahn GmbH & Co. KG	Bahnhof Rennsteig	98711	Schmiedefeld	Ilmenau - Themar
Rhein-Haardtahn GmbH	Mannheimer Straße 53	67098	Bad Dürkheim	Bad Dürkheim - Ludwigshafen-Oggersheim; 1000 mm, 750 V =
Rhein-Sieg-Verkehrsgesellschaft mbH	Steinstraße 31	53844	Troisdorf	Troisdorf - Lülldorf (Hüls)
Rinteln-Stadthagener Verkehrs GmbH	Biermannstr. 33	29221	Celle	Rinteln - Stadthagen
RP Eisenbahn GmbH	Schweitzinger Straße 2	67157	Wachenheim	Heimbach - Baumholder; Freiberg (S) - Holzhau
RSE Rhein-Sieg-Eisenbahn GmbH	Siebenbergstraße 152	53229	Bonn	Rahden - Uchte (museum railway), Beuel - Hangelar, Osberghausen - Waldbröl, Eggmühl -
Rügensche Kleinbahn GmbH & Co	Binzer Straße 12	18581	Putbus	Putbus - Göhren (Rügen), 750 mm; Werkstatt Putbus
Rurtalbahn GmbH	Kölner Landstraße 271	52351	Düren	Heimbach - Düren - Linnich; Zülpich - Düren
Sächsisch-Oberlausitzer Eisenbahngesellschaft mbH (SOEG)	Bahnhofstraße 41	02763	Zittau	Zittau - Kurort Oybin/ Kurort Jonsdorf, 750 mm
Langeoog island community boat trip	Hauptstr. 28	26465	Langeoog	Langeoog island railway, 1000 mm
Schleifkottenbahn GmbH	Staklenberg 1	58553	Halver	Oberbrügge - Halver
Stately homes and gardens in Dresden - Dresden park railway -	Hauptallee 5	01219	Dresden	Dresden park railway, circular route 381 mm
Schwäbische-Wald-Bahn GmbH	Kirchplatz 3	73642	Welzheim	Rudersberg - Welzheim (museum railway)
SDG Sächsische Dampfeisenbahngesellschaft mbH	Geyersdorfer Str. 32	09456	Annaberg-Buchholz	Radebeul - Radeburg, 750 mm
Seehafen Kiel GmbH & Co. KG	Bollhörn Kai 1	24103	Kiel	Neuwittenbeck - Vossbrook; Kiel - Seefischmarkt; Suchsdorf - Kiel-Scheerhafen
SRS Rail Service GmbH	Neuoffingen 3	89362	Offingen	Industriegleis Offingen - KKW Grundremmingen
Arneburg town	Breite Straße 14a	39596	Arneburg	Hassel - Niedergörne
Bitburg town	Rathausplatz 3 - 4	54634	Bitburg	Bitburg-Erdorf - Bitburg
Blumberg town - Wutachtalbahn	Hauptstraße 97	78176	Blumberg	Immendingen - Blumberg Zollhaus - Weizen - Lauchringen (museum railway)
Jöhstadt town -Preßnitzalbahn-	Markt 185	09475	Jöhstadt	Steinbach - Jöhstadt, 750 mm
Stadtbahn Saar GmbH	Hohenzollernstraße 104/106	66117	Saarbrücken	Sarreguemines - Riegelsberg Süd
Bad Wurzach town council	Postfach 12 80	88405	Bad Wurzach	Rosshagen - Bad Wurzach
Stadtwerke Trossingen GmbH	Bahnhofstraße 9	78647	Trossingen	Rottweil - Trossingen Stadt
Südwestdeutsche Verkehrs-AG (SWEG)	Rheinstraße 8	77933	Lahr	Achern - Ottenhöfen; Bühl (Baden) - Schwarzach - Dow Chemicals
SWK Mobil GmbH	St. Töniser Straße 124	47804	Krefeld	Krefeld Süd - St. Tönis; Krefeld - Hülserberg
Talbahn GmbH	Mühlenstr. 38	58285	Gevelsberg	Hagen Haspe - Ennepetal-Altenvoerde
Tegernsee-Bahn Betriebsgesellschaft mbH	Bahnhofplatz 5	83684	Tegernsee	Schäftlach - Tegernsee
Thüringer Eisenbahn GmbH	Schollerstraße 47	99096	Erfurt	Großheringen - Straußfurt
TME Torsten Meincke Eisenbahn GmbH				Hagenow Land - Zarrentin; Werkstatt Schwerin
Tourismus und Wametalbahn GmbH	Bahnhofstraße 11	38300	Wolfenbüttel	Börßum - Salzgitter Bad
Touristik Eisenbahn Ruhrgebiet GmbH	Kronprinzenstr. 35	45128	Dortmund	Essen, Zeche Zollverein - Schurenbach; Hattingen - Wengern Ost (museum railway)
UEF Eisenbahnverkehrsgesellschaft mbH	Im Schießgärtle 3	70567	Stuttgart	Amstetten - Gerstetten; Amstetten - Oppingen 1000 mm (museum railway); Werkstatt Heilbronn
Usedomer Bäderbahn GmbH	Am Bahnhof 1	17424	Seebad Heringsdorf	Züssow - Ahlbeck Gr., Peenemünde - Zinnowitz, Velgast - Barth
Verden-Walsroder Eisenbahn GmbH	Moorstraße 2a	27283	Verden	Verden (Aller) - Stemmen; Böhme - Walsrode



Verein Parkeisenbahn Auensee e. V.	Gustav-Esche-Str. 8	04159	Leipzig	Leipzig Auensee park railway, circular route, 381
Verkehrsbetriebe Extertal - Extertalbahn GmbH	Am Bahnhof 1	32699	Extertal	Rinteln Süd - Bartrup, 1500 V =,
Verkehrsbetriebe Grafschaft Hoya GmbH	Am Bahnhof 1	27318	Hoya	Eystrup - Hoya - Bruchhausen-Vilsen -
Verkehrsbetriebe Peine - Salzgitter GmbH	Am Hillenholz 28	38229	Salzgitter	Salzgitter Bad - Salzgitter AG - Peine
Verkehrsgesellschaft Landkreis Osnabrück GmbH	Bremer Str. 11	49163	Bohmte	Preuß. Oldendorf - Bohmte; Osnabrück-Hörne - Dissen-Bad Rothenfelde
Verkehrsgesellschaft Norderstedt mbH (VGN)	Heidbergstraße 101-111	22846	Norderstedt	Norderstedt - Ulzburg Süd
Verkehrsverband Hochtaunus -Zweckverband (VHT)	Ludwig-Erhard-Anlage 14	61352	Bad Homburg	Friedrichsdorf - Brandoberndorf
Vorwohle-Emmerthaler Verkehrsbetriebe	Am Bahnhof 1	37619	Bodenwerder	Emmerthal - Grohnde/KKW
Vulkan-Eifel-Bahn Betriebsgesellschaft mbH	Kasselburger Weg 16	54568	Gerolstein	Gerolstein - Kaisersesch and Werkstatt Gerolstein
VVM Verein Verkehrsamateure und Museumsbahnen e. V.	Billhorner Deich 79	20537	Hamburg	Kiel Süd - Schönberg (Holst.) - Schönberger Strand (museum railway)
Wanne-Herner Eisenbahn und Hafen GmbH (WHE)	Am Westhafen 27	44653	Herne	Wanne-Eickel Hafen - Wanne Eickel - Wanne Herzogstr/ Hüls works
Wendelsteinbahn GmbH	Kerschelweg 30	83098	Brannenburg	Brannenburg - Wendelstein; 1000 mm, rack railway, 1500 V =
WestEnergie und Verkehr GmbH	Haihover Straße 19	52511	Geilenkirchen	Industriebahn Geilenkirchen and Gillrath - Schierwaldenrath (museum railway) 1000 mm
Westerwaldbahn GmbH	Rosenheimer Straße 1	57520	Steinebach	Betzdorf - Daaden; Scheuerfeld - Welefeld and service equipment in Betzdorf
Westfälische Almetalbahn GmbH	Obere Sage	33184	Altenbeken	Helmstedt - Grasleben
Westfälische Landes-Eisenbahn GmbH (WLE)	Beckumer Straße 70	59555	Lippstadt	Münster - Neubeckum - Zementwerk Anneliese; Beckum - Lippstadt - Warstein; Belecke - Rüthen; Soest - S-Thomätor
Württembergische Eisenbahn-Gesellschaft mbH	Seewiesenstraße 19	71334	Waiblingen	Korntal - Weißach; Nürtingen - Neuffen; Gaildorf-West - Untergröningen
Joint Board of the Brandenburg Museum for Small and Private Railways	Am Bahnhof 3	17291	Gramzow	Gramzow - Damme - Eickstedt (museum railway)
Joint Board of the Franconian Freiland Museum, Fladungen	Silcherstraße 5	97074	Würzburg	Fladungen - Mellrichstadt (museum railway)
Joint Board of Kandertal railway	Postfach 1128	79400	Kandern	Haltingen - Kandern (museum railway)
Joint Board of the ÖPNV in Ammertal	Wilhelm-Keil-Straße 50	72072	Tübingen	Tübingen - Herrenberg
Joint Board Schönbuch railway (ZÖA)	Postfach 16 40	71006	Böblingen	Böblingen - Dettenhausen
Joint Board of the Transport Association	Alter Postplatz 10	71332	Waiblingen	Schorndorf - Rudersberg



A.2.2. List of public rail transport undertakings in Germany

Undertaking	Street	Code	Town	Gen_Date	PV	GV
A.V.G. Mirko Mokry e.K. Ascherslebener Verkehrsgesellschaft	Herrenbreite 24	06449	Aschersleben	28.09.2005	No	Yes
Abellio Rail NRW GmbH	Bredeneyer Straße 2	45133	Essen	11.12.2005	Yes	No
Ahaus-Alstätter Eisenbahn GmbH	Gronauer Straße 26	48683	Ahaus-Alstätte	10.11.1989	No	Yes
AHG Handel & Logistik GmbH & Co. KG	Am Seegraben 16	03058	Groß Gaglow	11.07.2000	Yes	Yes
AKN Eisenbahn AG	Rudolf-Diesel-Straße 2	24568	Kaltenkirchen	15.12.1997	Yes	Yes
Albtal-Verkehrs-Gesellschaft mbH (AVG)	Tullastraße 71	76131	Karlsruhe	10.05.1995	Yes	Yes
AmE Raillogistik GmbH	Bernard-Remy-Str. 6	19322	Wittenberge	04.03.2002	Yes	Yes
Anhaltische Bahn Gesellschaft mbH	Zur großen Halle 11+13	06844	Dessau	16.02.2000	Yes	Yes
Ankum - Bersenbrücker Eisenbahn GmbH	Bersenbrücker Str. 6	49577	Ankum	26.10.1995	Yes	Yes
Arco Transportation GmbH	Dr. Fischer Straße 1	06729	Tröglitz	02.03.2005	Yes	Yes
Augsburger Localbahn GmbH	Friedberger Straße 43	86161	Augsburg	04.08.1995	Yes	Yes
Bahnbetriebsgesellschaft Stauden mbH	Oberer Schleisweg 11	86156	Augsburg	03.09.2002	Yes	Yes
Bahnen der Stadt Monheim GmbH	Daimlerstraße 10	40789	Monheim am Rhein	11.10.1995	Yes	Yes
BahnLog Bahnlogistik und Service GmbH	Rathausstraße 5	66571	Eppelborn	14.11.2003	Yes	Yes
BASF AG Service Center Railway	GLL/R-B 818	67056	Ludwigshafen	02.07.1996	Yes	Yes
BASF Schwarzheide GmbH	Schipkauer Straße 1	01986	Schwarzheide	29.03.2000	No	Yes
Bayerische Cargo Bahn GmbH	Edisonallee 5	89231	Neu Ulm	14.03.2002	Yes	Yes
Bayerische Oberlandbahn GmbH	Bahnhofplatz 1	83607	Holzkirchen	10.03.1998	Yes	No
Bayerische Regiobahn GmbH	Bahnhofplatz 1	83607	Holzkirchen	05.05.2003	Yes	Yes
Bayerische Zugspitzbahn Bergbahn AG	Olympiastraße 27	82467	Garmisch-Partenkirchen	04.08.1995	Yes	Yes
BayernBahn Betriebsgesellschaft mbH	Am Hohen Weg 30	86720	Nördlingen	04.04.1995	Yes	Yes
BBL Logistik GmbH	Zeppelinstraße 21	21337	Lüneburg	17.02.2006	No	Yes
Bentheimer Eisenbahn AG	Otto-Hahn-Straße 1	48529	Nordhorn	26.10.1995	Yes	Yes
Bergbahnen im Siebengebirge AG	Drachenfelsstraße 53	53639	Königswinter	10.05.1994	Yes	No
Berlin-Brandenburgische Eisenbahn GmbH	Andreasstraße 66	10243	Berlin	27.01.2004	Yes	Yes
BGE Eisenbahn Güterverkehr Gesellschaft mbH	Sennefelder Straße 15	51469	Bergisch Gladbach	03.11.1997	No	Yes
BLP Wiebe Logistik GmbH	Im Finigen 8	28832	Achim	02.06.2005	No	Yes
Bocholter Eisenbahngesellschaft mbH	Hindenburgstraße 5	46395	Bocholt	16.02.2005	Yes	Yes
Bodensee-Oberschwaben-Bahn GmbH	Kornblumenstraße 7/1	88046	Friedrichshafen	16.05.1995	Yes	No
Borkumer Kleinbahn- und Dampfschiffahrt GmbH	Georg-Schütte-Platz 8	26757	Borkum	24.01.1996	Yes	Yes
BoxXpress.de GmbH	Köhlfließdamm 5	21129	Hamburg	07.05.2003	No	Yes
Bräunert Eisenbahnverkehr GmbH & Co. KG	Obere Bahnhofstraße 30	67308	Albisheim	05.12.2006	Yes	Yes
Breisgau-S-Bahn GmbH	Besanconallee 99	79111	Freiburg	24.01.1996	Yes	No
Bremen-Thedinghauser Eisenbahn GmbH	Leester Str. 88	28844	Weyhe - Leeste	03.03.2000	Yes	Yes
Bremer Straßenbahn AG	Flughafendamm 12	28199	Bremen	04.11.1997	Yes	No
Brohthal Schmalspurenbahn Betriebs GmbH		56654	Brohl-Lützing	31.08.1996	Yes	Yes
BSB - Saugbagger und Zweigegetechnik Stefan Mattes GmbH & Co. KG	Vulkanstraße 13	10367	Berlin	06.10.2006	No	Yes
BSL GmbH Betrieb-Service-Logistik	Am Kanal 59	15749	Mittenwalde	02.07.2003	Yes	Yes
BT Berlin Transport GmbH	Torstraße 49	10119	Berlin	25.05.2005	Yes	Yes
BTS Bahn Tec GmbH	Tannenweg 39	54293	Trier-Ehrang	06.01.2003	Yes	Yes
Burgenlandbahn GmbH	Baenschstraße 5	06712	Zeitz	22.12.1998	Yes	No
BVG Berliner Verkehrsbetriebe	Potsdamer Straße 188	10783	Berlin	14.03.2002	Yes	Yes
cantus Verkehrsgesellschaft mbH	Wilhelmshöher Allee 252	34119	Kassel	13.07.2006	Yes	No
Cargo Rail GmbH	Werkstraße 1	66763	Dillingen /Saar	02.07.1999	No	Yes
Chemion Logistik GmbH		51368	Leverkusen	22.02.2002	No	Yes
Chiemsee- Schifffahrt Ludwig Feßler	Seestraße 108	83209	Prien	04.08.1995	Yes	Yes
City-Bahn Chemnitz GmbH	Carl-von-Ossietzky-Straße 186	09127	Chemnitz	04.12.1997	Yes	No
Connex Sachsen GmbH	Zittauer Straße 71/73	02826	Görlitz	31.07.2002	Yes	Yes
CTL Rail GmbH	Heidenkampsweg 73	20097	Hamburg	28.06.2006	Yes	Yes
D & D Eisenbahn GmbH	Friedrich-List-Straße 13	19230	Hagenow-Land	10.02.2000	Yes	Yes
Dampfbahn Fränkische Schweiz e.V.	Pretzfelderstraße 21	91316	Ebermannstadt	01.08.1995	Yes	Yes
Dampfzug-Betriebsgemeinschaft e. V.	Chausseestraße 4a	39279	Loburg	11.02.1999	Yes	Yes
DB AutoZug GmbH	Königswall 21	44137	Dortmund	17.10.2000	Yes	Yes
DB Fahrzeuginstandhaltung GmbH	Weilburger Str. 22	60326	Frankfurt am Main	21.01.2004	Yes	Yes
DB Fernverkehr AG	Stephensonstraße 1	60326	Frankfurt am Main	15.10.1998	Yes	Yes
DB Heidekrautbahn GmbH	Babelsberger Straße 18	14473	Potsdam	17.09.2003	Yes	Yes
DB Regio AG	Stephensonstraße 1	60326	Frankfurt am Main	15.10.1998	Yes	Yes
DB Regio NRW GmbH	Willi-Becker-Allee 11	40227	Düsseldorf	15.04.2004	Yes	No
DB RegioNetz Verkehrs GmbH	Stephensonstraße 1	60326	Frankfurt am Main	10.07.2001	Yes	Yes
DB Services Nord GmbH	Museumstraße 39	22765	Hamburg	26.04.2001	Yes	Yes
DB Services Nordost GmbH	Köthener Straße 2-3	10963	Berlin	26.02.1999	Yes	Yes
DB Services Süd GmbH	Bahnhofplatz 2	80335	München	08.01.2001	Yes	Yes
DB Services Südost GmbH	Richard-Wagner Straße 3	04109	Leipzig	30.11.1998	Yes	Yes
DB Services Südwest GmbH	Karlstraße 6	60329	Frankfurt am Main	13.12.2000	Yes	Yes
DB Services West GmbH	Gereonstraße 5 - 11	50670	Köln	10.06.1999	Yes	Yes
Delmenhorst - Harpstedter Eisenbahn GmbH	Am Bahnhof 3	27243	Harpstedt	26.10.1995	Yes	Yes
DeltaRail GmbH	Nussweg 5	15232	Frankfurt (Oder)	07.04.2005	No	Yes
Deutsche Bahn AG	Potsdamer Platz 2	10785	Berlin	03.01.1994	Yes	Yes
Deutsche Bahn Gleisbau GmbH	Masurenallee 427	47279	Duisburg	27.10.1999	Yes	Yes



Eisenbahn-Bundesamt
Federal Railway Authority

Deutsche Gleisbau Material Transport GmbH	Spinnereistraße 13	04179	Leipzig	09.12.1998	No	Yes
Deutsche Museumseisenbahn GmbH	Steinstraße 7	64291	Darmstadt	26.03.1997	Yes	Yes
Deutsche Regionaleisenbahn GmbH (DRE)	Rudolf-Breitscheid-Straße 203	14482	Potsdam	22.10.2003	No	No
DGEG Bahnen & Reisen Bochum AG	Dr.-C. Otto-Straße 191	44879	Bochum	29.12.1995	Yes	No
Die-Lei GmbH	Ochshäuser Straße 9	34123	Kassel	29.11.2005	Yes	Yes
Dipl.-Ing. Günter Müller	Kreherstraße 104	09127	Chemnitz	11.12.1997	Yes	Yes
Dispolok GmbH	Krauss-Maffei-Straße 2	80997	München	05.07.2002	Yes	Yes
Döllnitzbahn GmbH	Bahnhofstraße 2	04769	Mügeln	17.12.1993	Yes	Yes
Dortmunder Eisenbahn GmbH	Speicherstraße 23	44147	Dortmund	29.04.2005	No	Yes
Dresdner Verkehrsbetriebe AG	Trachenberger Straße 40	01142	Dresden	07.09.2000	Yes	Yes
Dresdner Verkehrsservicegesellschaft mbH	Trachenberger Straße 40	01129	Dresden	05.10.2000	Yes	Yes
Duisport Rail GmbH	Bliersheimer Straße 83	47229	Duisburg	18.01.2001	No	Yes
DUOMobile GmbH	Am Containerbahnhof 1	91605	Gallmersgarten	30.08.2006	No	Yes
DWK GmbH & Co. KG	Diedrichstraße 5	24143	Kiel	10.10.2006	No	Yes
EBG Eisenbahn-Betriebs-Gesellschaft mbH	Bahnhofstraße 34	18528	Bergen auf Rügen	31.07.1998	Yes	Yes
EBW Eisenbahn-Bewachungs-GmbH	Bahnhofplatz 3	85221	Dachau	31.03.2003	No	Yes
EFV-Verkehrsgesellschaft mbH	Hauptstraße 15-17	50226	Frechen	29.06.2001	Yes	Yes
EH Güterverkehr GmbH	Franz-Lenze-Straße 15	47166	Duisburg	17.11.1998	No	Yes
Ei. L. T. GmbH Eisenbahn, Logistik und Transporte	Parktasse 4	14513	Teltow	01.03.2005	No	Yes
Eifelbahn Verkehrsgesellschaft mbH	Rheinhöller 3	53545	Linz am Rhein	18.12.1997	Yes	Yes
Eisenbahn Logistik Leipzig GmbH	Vierackerwiesen 4	04179	Leipzig	19.07.2005	Yes	Yes
Eisenbahn Logistik und Service GmbH (ELS)	Gewerbepark Ost 14	17235	Neustrelitz	24.03.2005	No	Yes
Eisenbahn und Sonderwagen-Betriebsgesellschaft mbH	Oberer Schleisweg 11	86156	Augsburg	24.09.1997	Yes	No
Eisenbahn-Bau- und Betriebsgesellschaft Pressnitztalbahn mbH	Am Bahnhof 78	09477	Jöhstadt	07.06.2000	Yes	Yes
Eisenbahnbetriebe Mittlerer Neckar GmbH	Bolzstraße 126	70806	Kornwestheim	05.11.1996	Yes	Yes
Eisenbahnen und Verkehrsbetriebe Elbe-Weser GmbH	Bahnhofstr. 67	27404	Zeven	28.12.1995	Yes	Yes
Eisenbahnfreunde Schwalm-Knüll e. V.	Fliederstraße 4a	34621	Frielendorf	10.04.1997	Yes	No
Eisenbahngesellschaft Ostfriesland - Oldenburg mbH	Zobtenstraße 9	26603	Aurich		No	No
Eisenbahngesellschaft Potsdam mbH	Drewitzer Straße 41	14478	Potsdam	11.04.2005	Yes	Yes
Eisenbahn-Service-Gesellschaft mbH	Alemannenstraße 19	71665	Vaihingen/Enz	24.03.2004	Yes	Yes
EKO-Transportgesellschaft mbH (EKO-Trans)	Werkstraße 1	15890	Eisenhüttenstadt	21.10.2003	Yes	Yes
ekr Bahnlogistik & Bauüberwachung GmbH	Warener Straße 5	12638	Berlin	15.12.2004	No	Yes
ELBA Logistik GmbH	Postfach 1764	71507	Backnang	18.10.2005	No	Yes
Elbe-Saale-Bahn GmbH	Bahnhofstraße 69	39104	Magdeburg	28.04.2004	Yes	Yes
Elektrische Bahnen der Stadt Bonn und des Rhein-Sieg-Kreises	Theaterstraße 24	53111	Bonn	30.09.1997	Yes	No
ELP - Eurolokpool GmbH	Straße der Einheit 25	06638	Karsdorf	18.10.2006	Yes	Yes
Elsenztalbahn GmbH	Postfach 1256	74872	Sinsheim	14.07.1995	Yes	No
Emsländische Eisenbahn GmbH	Bahnhofstr. 41	49716	Meppen	11.09.1998	Yes	Yes
Energy Rail GmbH	Nordparkstraße 30	03044	Cottbus	07.02.2006	Yes	Yes
EPB GmbH	Okenstraße 52	77652	Offenburg	31.07.2006	No	Yes
Erfurter Industriebahn GmbH (EIB)	Am Rasenrain 16	99089	Erfurt	15.09.1997	Yes	Yes
ERS Railways GmbH	Baseler Straße 35-37	60329	Frankfurt am Main	15.03.2006	No	Yes
EVS EUREGIO-Verkehrsschienenetz GmbH	Rüst 30	52224	Stolberg	15.05.2001	Yes	Yes
Farge-Vegesacker Eisenbahn GmbH	Rödelheimer Bahnweg 31	60489	Frankfurt am Main	19.12.1994	No	Yes
Ferropolis Bergbau- und Erlebnisbahn e. V.	Schlossstraße 1	06773	Gräfenhainichen	20.04.1999	Yes	Yes
Flecken Bruchhausen-Vilsen	Lange Str. 11	27305	Bruchhausen-Vilsen	22.11.1995	Yes	No
Frankenbahn GmbH	Am Plärrer 43	90338	Nürnberg	14.11.1996	Yes	Yes
Fränkische Museums Eisenbahn e.V.	Klingenhofstraße 70	90411	Nürnberg	17.01.1996	Yes	Yes
Freiberger Eisenbahngesellschaft mbH	Carl-Schiffner-Str. 26	09599	Freiberg	10.01.2001	Yes	Yes
Freunde des Schienenverkehrs Flensburg e.V.	Postfach 1617	24906	Flensburg	11.07.2005	Yes	No
Gemeinde Dornum	Schatthäuser Str. 9	26553	Dornum	04.05.1995	Yes	No
Georg Verkehrsorganisation GmbH (GVG)	Savignystraße 80	60325	Frankfurt am Main	31.03.1995	Yes	No
Georgsmarienhütte Eisenbahn und Transport GmbH	Postfach 12 80	49110	Georgsmarienhütte	14.01.1997	Yes	Yes
Gesellschaft der Förderer der Museumseisenbahn Hamm e. V.	Schumannstraße 35	59065	Hamm	12.12.1995	Yes	Yes
GfE Gesellschaft für Eisenbahnbetrieb GmbH	Hofäckerstraße 9	88677	Markdorf	09.05.1998	Yes	Yes
Gleis- und Verkehrslogistik GmbH	Lange Wand 1	27753	Delmenhorst	28.04.2000	No	Yes
GLV Gesellschaft für Logistik- und Vegetationsdienste mbH	Erzbergerstraße 106	67063	Ludwigshafen	31.08.2006	Yes	Yes
GoTrain Eisenbahnverkehre GmbH	Am Holzkamp 8	27283	Verden	14.01.2003	No	Yes
Groß-Bieberau-Reinheimer Eisenbahn GmbH	Wersauer Weg 100	64401	Groß Biberau	08.10.1996	No	Yes
H.F. Wiebe GmbH & Co. KG	Im Finigen 8	28832	Achim	27.10.1998	No	Yes
Hafen- und Bahnbetriebe der Stadt Krefeld	Oberstraße 13	47829	Krefeld	18.01.1996	Yes	Yes
Häfen und Güterverkehr Köln AG (HGK)	Bayenstraße 2	50678	Köln	13.12.2004	No	Yes
Hafenbetriebsgesellschaft Hildesheim mbH	Hafenstraße 20	31137	Hildesheim	08.03.2006	No	Yes
Hafendienste Wilhelmshaven GmbH	Virchowstr. 21	26382	Wilhelmshaven	06.02.1996	No	Yes
Hamburger Hochbahn AG (HHA)	Steinstraße 20	20095	Hamburg	13.09.2001	Yes	No
Hanseatic Rail AG	Ötztaler Straße 5	13187	Berlin	08.01.2004	Yes	Yes
Härtsfeld Betriebs GmbH	Dschinger Straße 11	73450	Neresheim	20.06.1996	Yes	Yes
Harzer Schmalspurbahnen GmbH	Friedrichstraße 151	38855	Wernigerode	24.05.1995	Yes	Yes
Havelländische Eisenbahn AG	Schönwalder Allee 51	13587	Berlin	27.02.2002	Yes	Yes
Heavy Haul Power International GmbH	Löberwallgraben 5	99096	Erfurt	09.05.2000	No	Yes
Hellertalbahn GmbH	Bahnhofstr. 1	57518	Betzdorf/Sieg	13.10.1999	Yes	Yes
Hersfelder Eisenbahn GmbH	Wilhelmshöher Allee 252	34119	Kassel	22.11.1999	Yes	Yes



Hessische Landesbahn GmbH (HLB)	Mannheimer Straße 15	60329	Frankfurt am Main	02.04.2004	Yes	Yes
HGB Hessische Güterbahn GmbH	Alter Weg 28	35418	Buseck-Trohe	24.05.2006	No	Yes
HLB Hessenbahn GmbH	Mannheimer Straße 15	60329	Frankfurt am Main	13.06.2005	Yes	Yes
Hohenzollerische Landesbahn AG (HzL)	Bahnhofstraße 21	72379	Hechingen	24.02.1995	Yes	Yes
Hörseltalbahn GmbH	Adam-Opel-Straße 100	99817	Eisenach	03.06.1999	Yes	Yes
HSL Logistik GmbH	Grusonstraße 46	22113	Hamburg	19.12.2003	Yes	Yes
Hupac Transportgesellschaft mbH	Zum Umschlagbahnhof 2	78224	Singen	29.06.1999	No	Yes
HWB Verkehrsgesellschaft mbH	Bahnhofstraße 16a	54411	Hermeskeil	01.07.2005	Yes	Yes
IGE Bahntouristik GmbH & Co. KG	Am Bahngelände 2	91217	Hersbruck	31.07.2003	Yes	Yes
IGT Inbetriebnahmegesellschaft Transporttechnik mbH	Am Schmiedeberg 12a	38274	Klein Elbe	25.11.2005	Yes	Yes
Ilmebahn GmbH	Dr.-Friedrich-Uhde-Str. 24	37574	Einbeck	26.10.1995	Yes	Yes
Industrietransportgesellschaft mbH Brandenburg (ITB)	Friedrich-Franz-Straße 11	14770	Brandenburg	29.12.1995	No	Yes
INFRALEUNA Infrastruktur und Service GmbH	Am Haupttor/Gebäude 4310	06237	Leuna	04.05.2000	Yes	Yes
intalliance rail GmbH	Am Hohen Ufer 6	30159	Hannover	29.11.2004	Yes	No
ITL (Import-Transport-Logistik)-Cargo GmbH	Magdeburger Straße 58	01067	Dresden	18.08.2004	Yes	Yes
ITL-Eisenbahngesellschaft mbH	Magdeburger Straße 58	01067	Dresden	08.12.1998	Yes	Yes
Kahlgrund-Verkehrs-GmbH	Am Bahnhof 1	63825	Schöllkrippen	04.08.1995	Yes	Yes
Kölnener Verkehrs-Betriebe AG	Scheidtweiler Straße 38	50933	Köln	03.07.2001	Yes	No
Kombiverkehr Deutsche Gesellschaft für kombinierten Güterverkehr mbH & Co. KG	Ludwig-Landmann-Straße 405	60486	Frankfurt am Main	17.11.1999	No	Yes
Kompetenz für Schienengebundene Verkehre GmbH	Ludwig-Erhard-Straße 55a	04103	Leipzig	22.03.2006	Yes	Yes
Kreisbahn Mansfelder Land GmbH	Ahlsdorfer Weg 10	06311	Helbra	24.11.1995	Yes	Yes
Kreisbahn Siegen-Wittgenstein GmbH (KSW)	Friedrichstraße 47	57072	Siegen	10.10.1995	Yes	Yes
Kreisverkehrs- und Infrastrukturbetrieb St. Wendel	Mommstraße 21-27	66606	St. Wendel	01.05.2001	Yes	No
Kuckucks-Bähnel Bahnbetriebs GmbH	Sommerbergstraße 3	67466	Lambrecht	24.04.1996	Yes	Yes
Laeger & Wöstenhöfer GmbH & Co. KG	Jahnstraße 29	12347	Berlin	23.02.2005	Yes	Yes
Landkreis Cuxhaven	Postfach	27470	Cuxhaven	02.10.2003	Yes	No
Landkreis Konstanz	Benediktinerplatz 1	78467	Konstanz	22.11.2006	Yes	No
Lappwaldbahn GmbH	Am Bahnhof 4	39356	Weferlingen	03.11.1997	Yes	Yes
Lausitzer Dampfloz Club e.V.	Am Stellwerk 552	03185	Teichland-Neuendorf	22.09.1998	Yes	No
LDS GmbH Logistik, Dienstleistungen & Service	Röntgenstraße 1-3	23701	Eutin	28.09.2004	Yes	Yes
LEG Leipziger Eisenbahnverkehrsgesellschaft mbH	Nonnenstraße 39	04229	Leipzig	10.10.2003	Yes	Yes
Leonhard Weiss GmbH & Co. KG	Leonhard-Weiss-Straße 22	73037	Göppingen	09.05.1996	No	Yes
LOCON Logistik & Consulting AG	Dorfstraße 23	17291	Oberuckersee	02.07.2003	Yes	Yes
Lokomotion Gesellschaft für Schienentraktion mbH	Hofbräuallee 11	81829	München	28.05.2004	Yes	Yes
LTE Lightrail Transit Enterprises GmbH	Am Rohrbach 2	69126	Heidelberg	13.02.2001	Yes	Yes
Lüchow-Schmarsauer Eisenbahn GmbH	Königsberger Str. 10	29439	Lüchow	26.10.1995	Yes	Yes
Lutra GmbH	Postf 1124	15701	Königs Wusterhausen	30.01.2001	No	Yes
Mansfelder Bergwerksbahn e.V.	Postfach 1155	06305	Klostermansfeld	30.09.1999	Yes	Yes
Märkische Eisenbahngesellschaft mbH	Wehberger Straße 80	58507	Lüdenscheid	16.11.1995	No	Yes
Märkische Museums-Eisenbahn e.V. (MME)	Postf 13 46	58813	Plettenberg	03.03.1999	Yes	No
MEB-Bahndienstleistungen GmbH	Schanzenweg 3	39104	Magdeburg	22.06.2004	No	Yes
Mecklenburgische Bäderbahn Molli GmbH & Co	Am Bahnhof	18209	Bad Doberan	28.09.1995	Yes	Yes
metronom Eisenbahngesellschaft mbH	St. Viti-Straße 15	29525	Uelzen	22.08.2002	Yes	No
MEV Eisenbahn Verkehrsgesellschaft mbH	Am Viktoria-Turm 2	68163	Mannheim	14.11.2000	Yes	Yes
Mindener Kreisbahnen GmbH	Karlstraße 48	32423	Minden	18.06.1996	Yes	Yes
Mitteldeutsche Eisenbahn GmbH	Bau A 103 bei Dow Olefinverbund GmbH	06258	Schkopau	16.08.1999	Yes	Yes
Mittelweserbahn GmbH	Bahnhofstraße 2	27305	Bruchhausen-Vilsen	18.10.1999	Yes	Yes
Muldental-Eisenbahnverkehrsgesellschaft mbH	Schwanefelder Straße 1b	08393	Meerane	19.01.2001	Yes	Yes
Mülheimer Verkehrs Gesellschaft mbH	Duisburger Straße 78	45479	Mülheim an der Ruhr	05.11.2003	No	Yes
Museumsbahn Schöneheide e.V. (Gemeindeverwaltung Schöneheide)	Hauptstraße 43	08304	Schöneheide	18.09.1995	Yes	Yes
Museums-Eisenbahn-Club Losheim (MECL)	Vierherrenwald 35	66679	Losheim am See	02.05.1995	Yes	No
Museums-Eisenbahn-Gemeinschaft Wachtl e. V.	Pendingstraße 6	83088	Kiefersfelden	04.08.1995	Yes	No
MVV OEG AG	Luisenring 49	68159	Mannheim	03.08.2000	Yes	No
NBE nordbahn Eisenbahngesellschaft mbH	Rudolf-Diesel-Straße 2	24568	Kaltenkirchen	10.12.2002	Yes	No
NEB Betriebsgesellschaft mbH	Georgenstraße 22	10117	Berlin	24.03.2005	Yes	Yes
NEB Niederbarnimer Eisenbahn AG	Georgenstraße 22	10117	Berlin	24.11.2000	Yes	Yes
neg Niebüll GmbH	Bahnhofstraße 6	25899	Niebüll	12.03.2004	Yes	Yes
NeSA Eisenbahn- Betriebsgesellschaft Neckar-Schwarzwald-Alb mbH	Postfach 1127	72001	Tübingen	29.04.1999	Yes	Yes
Neukölln-Mittenwalder Eisenbahn AG (NME)	Gottlieb-Dunkel-Straße 47/48	12099	Berlin	25.09.1990	Yes	Yes
Neuss-Düsseldorfer Häfen GmbH & Co. KG □ - Neusser Eisenbahn -	Hammer Landstraße 3	41460	Neuss	11.03.2004	No	Yes
Niederlausitzer Museumseisenbahn e.V.	Holsteiner Straße 37	03238	Finsterwalde	05.04.2002	Yes	No
Niederrheinische Verkehrsbetriebe AG (NIAG)	Hornbergerstraße 113	47441	Moers	17.11.1995	Yes	Yes
NiedersachsenBahn GmbH	Biermannstraße 33	29221	Celle	21.08.2002	Yes	No
Nordbayerische Eisenbahngesellschaft mbH	Hafenbahnhofstraße 25	63741	Aschaffenburg	15.07.2002	Yes	Yes



Nordic Rail Service GmbH	Hafenstraße 1b	23568	Lübeck	19.07.2004	No	Yes
Nord-Ostsee-Bahn GmbH (NOB)	Raiffeisenstraße 1	24103	Kiel	19.04.2002	Yes	Yes
NordWestBahn GmbH	Alte Poststr. 9	49074	Osnabrück	10.12.1999	Yes	Yes
Öchsle-Bahn-Betriebs-GmbH	Laubacher Weg 43	88416	Ochsenhausen	30.04.2004	Yes	No
Ortenau-S-Bahn GmbH	Hauptstraße 26	77652	Offenburg	19.11.1997	Yes	No
Ostdeutsche Eisenbahngesellschaft mbH (ODEG)	Bahnhof 1	19370	Parchim	02.12.2002	Yes	Yes
Osthannoversche Eisenbahnen AG (OHE)	Biermannstr. 33	29221	Celle	23.10.1995	Yes	Yes
Ostseeland Verkehr GmbH (OLA)	Ludwigsluster Chaussee 72	19061	Schwerin	21.12.2005	Yes	Yes
PBSV-Verkehrs-GmbH	An der Halberstädter Chaussee 10	39116	Magdeburg	28.07.1997	Yes	Yes
PCT Private Car Train GmbH	Feierabendmühle 2	85283	Wolnzach	08.08.2002	No	Yes
Pfalzbahn Eisenbahnbetriebsgesellschaft mbH	Dürkheimer Straße 109	67227	Frankenthal	24.04.1996	Yes	Yes
Prignitzer Eisenbahn GmbH (PEG)	Pritzwalker Straße 2	16949	Putlitz	05.11.2003	Yes	Yes
Prignitzer Kleinbahnmuseum Lindenberg e.V.	Hauptstraße 7	16928	Lindenberg	11.04.2002	Yes	No
Prüfcenter Wegberg-Wildenrath der Siemens AG Verkehrstechnik	Friedrich-List-Allee 1	41844	Wegberg-Wildenrath	06.11.1999	No	Yes
Rail Technologie & Logistics GmbH	Am Fuchsberg 6d	39112	Magdeburg	14.07.2006	No	Yes
RAIL4CHEM Eisenbahnverkehrsgesellschaft mbH	Schützenbahn 60	45127	Essen	31.10.2001	Yes	Yes
Railion Deutschland AG	Rheinstraße 2	55116	Mainz	15.10.1998	Yes	Yes
Raillogic GmbH	Kölner Landstr. 271	52351	Düren	15.07.2002	Yes	Yes
RBH Logistics GmbH	Talstraße 7	45966	Gladbeck	03.05.2001	Yes	Yes
RCB rail center Bützow GmbH & Co. KG	Tarnower Chaussee	18246	Bützow	11.11.2003	No	Yes
RCN Logistik GmbH	Katzwanger Straße 175	90461	Nürnberg	20.11.2002	No	Yes
Regental Bahnbetriebsgesellschaft mbH	Bahnhofplatz 1	94234	Viechtach	22.12.1994	Yes	Yes
Regio Infra Service Sachsen GmbH	Carl-von-Ossietzky-Straße 186	09127	Chemnitz	06.12.2006	Yes	Yes
Regiobahn Bitterfeld Berlin GmbH	Straße am Landgraben 5	06749	Bitterfeld	25.04.1996	Yes	Yes
Regiobahn Fahrbetriebsgesellschaft mbH	An der Regiobahn 15	40822	Mettmann	01.02.2006	Yes	No
RegioBus Hannover GmbH, (Betrieb Steinhuder Meer-Bahn)	Hindenburgstr. 43-45	31515	Wunstorf	11.09.1998	Yes	Yes
Regional- und Stadtverkehr Bayern GmbH	Nelson-Mandela-Platz 18	90459	Nürnberg	27.03.2003	Yes	Yes
Regionalbahn Kassel GmbH	Wilhelmshöher Allee 252	34119	Kassel	26.02.1998	Yes	No
Regionale Bahngesellschaft Kaarst - Neuss - Düsseldorf - Erkrath - Mettmann - Wuppertal mbH (Regio-Bahn)	An der Regiobahn 15	40822	Mettmann	13.05.1997	Yes	No
Regionalverkehr Münsterland GmbH	Krögerweg 11	48155	Münster	16.12.1986	No	Yes
Regionalverkehr Ruhr-Lippe GmbH	Am Bahnhof 10	59494	Soest	31.12.1987	No	Yes
Rennsteig Bahn GmbH & Co. KG	Bahnhof Rennsteig	98711	Schmiedefeld	17.11.2003	Yes	Yes
Rhein-Haardtahn GmbH	Mannheimer Straße 53	67098	Bad Dürkheim	19.09.1996	Yes	Yes
Rhein Hessische Eisenbahn GmbH	In der Silz 3A	67098	Bad Dürkheim	08.09.2006	Yes	Yes
Rhein-Neckar-Verkehr GmbH (RNV)	Luisenring 49	68159	Mannheim	17.02.2005	Yes	No
Rhein-Sieg-Verkehrsgesellschaft mbH	Steinstraße 31	53844	Troisdorf	29.02.1996	Yes	Yes
Rhenus Rail Logistics GmbH	August-Hirsch-Straße 3	47119	Duisburg-Ruhrort	22.11.2006	No	Yes
Rinteln-Stadthagener Verkehrs GmbH	Biermannstr. 33	29221	Celle	04.10.1995	Yes	Yes
Röbel/Müritz Eisenbahn GmbH	Am Bahnhof 4	17207	Röbel (Müritz)	23.05.2002	Yes	Yes
RSE Rhein-Sieg-Eisenbahn GmbH	Siebengebirgsstraße 152	53229	Bonn	01.07.2005	Yes	Yes
RST Rangier-Service und Transportgesellschaft mbH	Am Güterbahnhof 11	66386	St. Ingbert	22.12.1995	No	Yes
RTS Rail Transport Service Germany GmbH	Landsberger Straße 480	81241	München	14.06.2006	No	Yes
Rügensch Kleinbahn GmbH & Co	Binzer Straße 12	18581	Putbus	21.12.1995	Yes	Yes
Rurtalbahn GmbH	Kölner Landstraße 271	52351	Düren	23.10.2003	Yes	Yes
Saarbahn GmbH	Hohenzollernstraße 104-106	66117	Saarbrücken	01.08.1997	Yes	No
Sächsisch-Oberlausitzer Eisenbahngesellschaft mbH (SOEG)	Bahnhofstraße 41	02763	Zittau	15.11.1996	Yes	Yes
S-Bahn Berlin GmbH	Invalidenstraße 19	10115	Berlin	29.12.1994	Yes	Yes
S-Bahn Hamburg GmbH	Museumstraße 39	22765	Hamburg	11.03.1997	Yes	No
SBB Cargo Deutschland GmbH	Schifferstraße 200	47059	Duisburg	17.07.2002	No	Yes
SBB GmbH	Hafenstrasse 10	78462	Konstanz	28.03.2003	Yes	No
Schienenverkehrsgesellschaft mbH	Marienbaderstraße 48	70372	Stuttgart	17.10.1996	Yes	Yes
Schiffahrt der Inselgemeinde Langeoog (Inselbahn)	Hauptstr. 28	26465	Langeoog	24.01.1996	Yes	Yes
Schleifkottenbahn GmbH	Staklenberg 1	58553	Halver	19.12.2000	No	Yes
Schleswig-Holstein-Bahn GmbH (SHB)	Rudolf-Diesel-Straße 2	24568	Kaltenkirchen	08.12.2003	Yes	No
Schneider & Schneider GmbH	Bundesstraße 19	21423	Winsen/Rottorf	07.04.2004	No	Yes
SDG Sächsische Dampfeisenbahngesellschaft mbH	Geyersdorfer Str. 32	09456	Annaberg-Buchholz	23.02.1998	Yes	Yes
Seehafen Kiel GmbH & Co. KG	Bollhörnkai 1	24103	Kiel	28.11.1973	No	Yes
SIBA Bahn- und Gleissicherheit GmbH	Postfach 5549	76037	Karlsruhe	04.09.2000	Yes	Yes
SKL Umschlagservice GmbH	Alt Salbke 6-10	39122	Magdeburg	07.08.2001	No	Yes
SLG Spitzeke Logistik GmbH	Warmensteinacher Straße 60	12349	Berlin	17.04.2000	No	Yes
SMB Spedition GmbH	Wiener Straße 20	93055	Regensburg	08.09.2003	No	Yes
SRS Rail Service GmbH	Neuoffingen 3	89362	Offingen	26.02.2002	Yes	Yes
SSG Saar-Service GmbH	Mainzer Straße 159a	66121	Saarbrücken	01.03.2002	Yes	Yes
Stadt Blumberg - Wutachtalbahn	Hauptstraße 97	78176	Blumberg	26.11.1996	Yes	Yes
Stadtbahn Saar GmbH	Hohenzollernstraße 104-106	66117	Saarbrücken	17.04.1996	Yes	No
Stadtwerke Trossingen GmbH	Bahnhofstraße 9	78647	Trossingen	17.10.2005	Yes	No

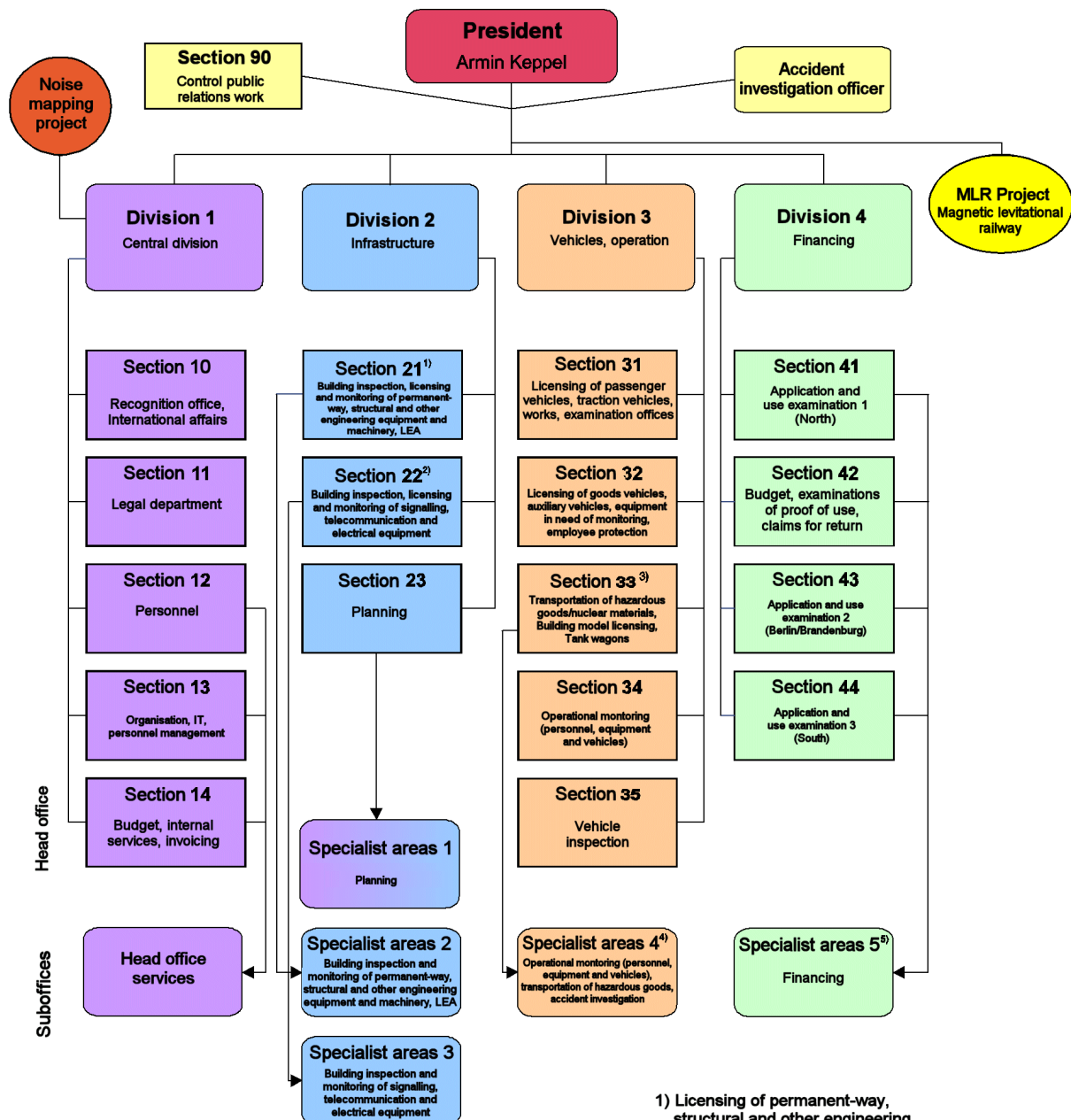


Stadtwerke Verkehrsgesellschaft Frankfurt am Main mbH (VGF)	Kurt-Schumacher-Straße 10	60311	Frankfurt am Main	26.04.2004	Yes	Yes
Stahlwerk Thüringen GmbH	Kronacher Straße 6	07333	Unterwellenborn	30.01.2001	No	Yes
Stauden Verkehrs Gesellschaft mbH	Oberer Schleisweg 11	86156	Augsburg	19.02.2004	Yes	Yes
Stock -Transport-	Hans-Zöller-Straße 24k	55130	Mainz	12.05.2004	No	Yes
Süd/Ost-Hessen Plan GmbH □	Daimlerstraße 5	63450	Hanau	23.03.2004	Yes	Yes
Verkehrs- und Bau-Consulting						
Süd-Thüringen-Bahn (STB)	Am Rasenrain 16	99086	Erfurt	04.02.2000	Yes	No
Südwestdeutsche Verkehrs-AG (SWEG)	Rheinstraße 8	77933	Lahr	21.05.2003	Yes	Yes
SWK Mobil GmbH	St. Töniser Straße 124	47804	Krefeld	03.08.1995	No	Yes
Talgo (Deutschland) GmbH	Revaler Straße 99	10245	Berlin	20.03.2002	Yes	No
Tegernsee-Bahn Betriebsgesellschaft mbH	Bahnhofplatz 5	83684	Tegernsee	22.12.1994	Yes	Yes
TGP Terminalgesellschaft Pfullendorf mbH	Hessenbühl 20	88630	Pfullendorf	04.07.2001	No	Yes
Thüringer Eisenbahn GmbH	Schollerstraße 47	99096	Erfurt	30.01.2004	Yes	Yes
TIM Rail Eisenbahnbetriebsgesellschaft mbH	Schwetzingen Straße 2	67157	Wachenheim	08.08.2003	Yes	Yes
Tourismus und Warnetalbahn GmbH	Bahnhofstraße 11	38300	Wolfenbüttel	23.10.1995	Yes	No
Touristenbahnen im Rheinland GmbH (TBR)	Am Bahnhof 13a	52538	Gangelt	30.04.1996	Yes	Ja
Touristik-Eisenbahn Lüneburger Heide GmbH	Lüner Damm 26	21337	Lüneburg	16.09.1998	Yes	No
Traditionsbahn Radebeul e.V.	Am Alten Güterboden 4 k	01445	Radebeul	14.05.2003	Yes	No
Trans Regio Deutsche Regionalbahn GmbH	Eisenbahnstraße 73	67655	Kaiserslautern	07.12.1999	Yes	Yes
Transport-Schienen-Dienst GmbH	Dießemer Straße 18	47799	Krefeld	12.08.2005	Yes	Yes
TWE Bahnbetriebs GmbH	Am Grubenhof 2	33330	Gütersloh	10.12.2002	Yes	Yes
TX Logistik AG	Rhöndorfer Straße 85	53604	Bad Honnef	06.12.2001	Yes	Yes
UEF Eisenbahnverkehrsgesellschaft mbH	Im Schießgärtle 3	70567	Stuttgart	14.10.1997	Yes	Yes
Usedomer Bäderbahn GmbH	Am Bahnhof 1	17424	Seebad Heringsdorf	13.12.1994	Yes	Yes
UTL Umwelt- und Transportlogistik GmbH	Seehang 28	78465	Konstanz	20.10.2005	Yes	Yes
Uwe Adam Eisenbahnverkehrsunternehmen GmbH	Sondraer Straße 164	99848	Sättelstädt	02.04.2002	No	Yes
Vattenfall Europe Mining AG □	Schwarze Pumpe - An der Heide	03130	Spremberg	01.09.2006	No	Yes
Eisenbahnbetrieb						
vectus Verkehrsgesellschaft mbH	Bahnhofplatz 2	65549	Limburg	05.04.2004	Yes	No
Veolia Verkehr Rheinland GmbH	Neuköllner Straße 10	52068	Aachen	22.11.2006	Yes	No
Veolia Verkehr Sachsen-Anhalt GmbH	Magdeburger Straße 29	38820	Halberstadt	08.04.2005	Yes	No
Verden-Walsroder Eisenbahn GmbH	Moorstraße 2a	27283	Verden	26.10.1995	Yes	Yes
Verein Sächsischer Eisenbahnfreunde e. V. (VSE)	Schneeberger Straße 60	08340	Schwarzenberg	11.01.2000	Yes	Yes
Verein zur Erhaltung der Hespertalbahn e.V.	Postfach 150223	45242	Essen	06.09.2006	Yes	Yes
Verkehrsbetriebe Extertal - Extertalbahn GmbH	Am Bahnhof 1	32699	Extertal	30.04.1996	Yes	Yes
Verkehrsbetriebe Grafschaft Hoya GmbH	Am Bahnhof 1	27318	Hoya	09.11.1995	Yes	Yes
Verkehrsbetriebe Peine - Salzgitter GmbH	Am Hillenholz 28	38229	Salzgitter	24.01.1996	Yes	Yes
Verkehrsgesellschaft Görlitz GmbH	Zittauer Straße 71/73	02828	Görlitz	19.12.2000	Yes	Yes
Verkehrsgesellschaft Landkreis Osnabrück GmbH	Bremer Str. 11	49163	Bohmte	09.07.1996	Yes	Yes
Verkehrsgesellschaft Norderstedt mbH (VGN)	Heidbergstraße 101-111	22846	Norderstedt	25.09.1996	Yes	No
Vetter GmbH Busunternehmen	Hinsdorfer Weg 1	06779	Salzfurkapelle	30.01.2002	Yes	Yes
VIAS GmbH	Kurt-Schumacher-Straße 10	60311	Frankfurt am Main	21.09.2005	Yes	Yes
Vogtlandbahn GmbH	Ohmstraße 2	08496	Neumark	18.03.1998	Yes	Yes
Vorbereitungsgesellschaft Transporttechnik mbH (VGT)	Linke-Hoffmann-Busch-Straße 1	38239	Salzgitter	19.02.2003	Yes	Yes
Vorwohle-Emmerthaler Verkehrsbetriebe GmbH	Am Bahnhof 1	37619	Bodenwerder	26.10.1995	Yes	Yes
Vossloh Locomotives GmbH	Falckensteiner Straße 2	24159	Kiel	30.01.2001	Yes	Yes
Vulkan-Eifel-Bahn Betriebsgesellschaft mbH	Kasselburger Weg 16	54568	Gerolstein	13.03.2002	Yes	Yes
VVM Verein Verkehrsamateure und Museumsbahnen e. V.	Billhorner Deich 79	20537	Hamburg	19.02.1996	Yes	Yes
Wanne-Herner Eisenbahn und Hafen GmbH (WHE)	Am Westhafen 27	44653	Herne	21.12.1995	No	Yes
Wendelsteinbahn GmbH	Kerschelweg 30	83098	Brannenburg	04.08.1995	Yes	Yes
Werra Eisenbahnverkehrsgesellschaft mbH	Rittergasse 3	99817	Eisenach	15.11.2006	Yes	Yes
Weserbahn GmbH (WBG)	Flughafendamm 12	28199	Bremen	27.06.2000	Yes	Yes
WestEnergie und Verkehr GmbH	Haihover Straße 19	52511	Geilenkirchen	30.04.1996	Yes	Yes
Westerbaldbahn GmbH	Rosenheimer Straße 1	57520	Steinebach	26.10.1994	Yes	Yes
WestfalenBahn GmbH	Otto-Brenner-Straße 242	33604	Bielefeld	10.03.2006	Yes	Yes
Westfälische Almetalbahn GmbH	Obere Sage	33184	Altenbeken	31.07.1998	Yes	Yes
Westfälische Landes-Eisenbahn GmbH (WLE)	Beckumer Straße 70	59555	Lippstadt	29.11.1995	Yes	Yes
Westigo GmbH	Scheidtweiler Straße 38	50933	Köln	18.10.2006	Yes	No
Westmecklenburgische Eisenbahngesellschaft mbH	Zum Bahnhof 3	19246	Bantlin		Yes	Yes
Westsächsische Eisenbahntransport Gesellschaft mbH	Am Schafteich 1	08371	Glauchau	13.07.2005	No	Yes
Wincanton Rail GmbH	Kaiserstraße 170-174	66386	St. Ingbert	04.12.1996	Yes	Yes
Würtemburgische Eisenbahn-Gesellschaft mbH	Seewiesenstraße 19	71334	Waiblingen	03.08.1995	Yes	Yes
ZugBus Regionalverkehr Alb-Bodensee GmbH	Karlstraße 31-33	89073	Ulm	08.03.1996	Yes	No
Zweckverband Brandenburgisches Museum für Klein- und Privatbahnen	Am Bahnhof 3	17291	Gramzow	31.01.1998	Yes	No
Zweckverband Fränkisches Freilandmuseum Fladungen	Silcherstraße 5	97074	Würzburg	23.10.2000	Yes	No
Zweckverband Kandertalbahn	Postfach 1128	79400	Kandern	24.07.1995	Yes	Yes
Zweckverband ÖPNV im Ammertal	Wilhelm-Keil-Straße 50	72072	Tübingen	21.07.1999	Yes	No
Zweckverband Ringzug Schwarzwald-Baar-Heuberg	Johannesstraße 27	78056	Villingen-Schwenningen	22.12.2004	Yes	No



ANNEX B: Organisational diagram of the National Safety Authority

B.1.1. Diagram: Internal organisation (as at 2006)



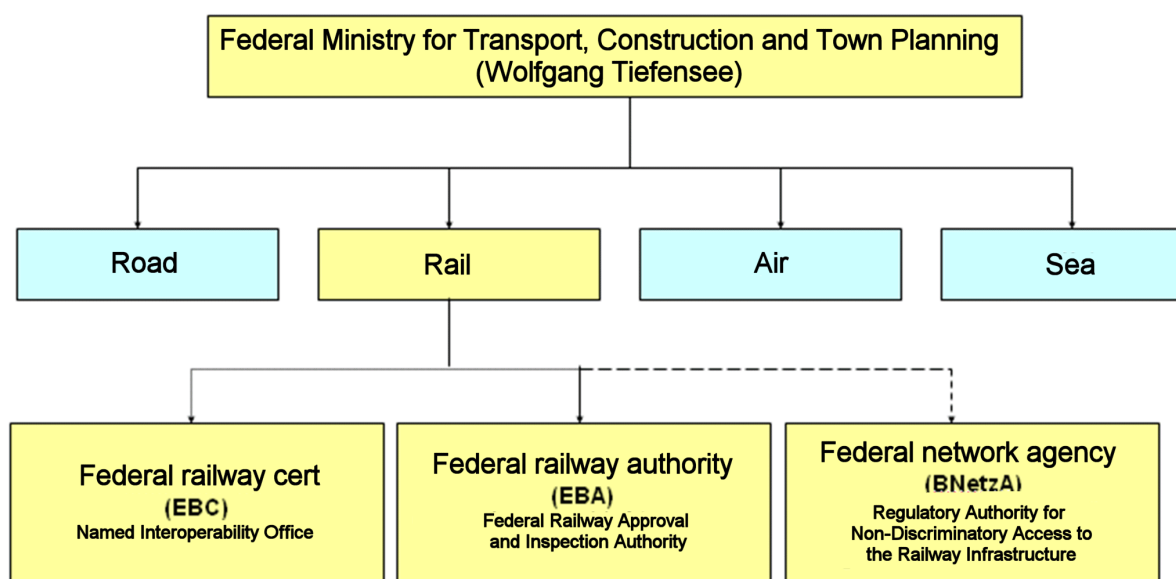
- 1) Licensing of permanent-way, structural and other engineering equipment and machinery, Munich office
- 2) Licensing of signalling, telecommunication and electrical equipment
Specialist area 224 (Berlin) and Specialist area 226 (Munich)
- 3) Inspection of compliance with nuclear energy law
- 4) Not at the Saarbrücken site
- 5) Only at sub-offices B, DD, EF, HAL, F, HH, KA, K/E, N and SN



B.1.2. Internal Organisation – Location of the sub-offices



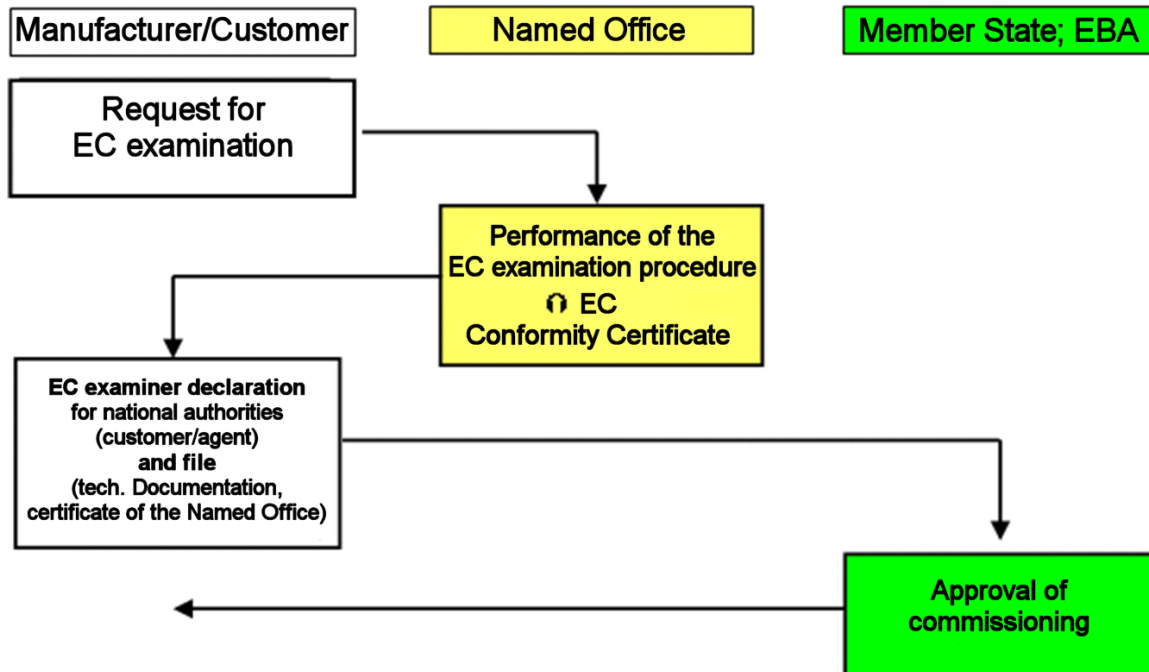
B.2. Diagram: Connection with other national authorities*



* As at 2006; the independent Accident Investigation Office was introduced in 2007



B.3. Diagram: Cooperation with Named Offices





ANNEX C: CSI data and applicable definitions

C.1. CSI data

Safety indicators pursuant to Annex 1 of the Safety Directive 2004/49/EC¹⁾

1. Accident-related indicators

1.1 Total number of accidents and average number of accidents (based on millions of kilometres travelled), broken down according to accident type

	<i>All accident types</i>	Train collisions, including collisions with obstacles within the clearance profile	Derailments	Accidents on level crossings, including those shared with pedestrians	Accidents resulting in personal injury caused by moving railway vehicles, not including suicides	Vehicle fires	Other accidents
Total	983	422	52	181	216	98	14
Average	0.97	0.42	0.05	0.18	0.21	0.10	0.01

1.2 Total number and average number of seriously injured persons and fatalities depending on the type of accident (based on millions of kilometres travelled), broken down into the following categories

1.2.1. Seriously injured persons

	<i>All accident types</i>	Train collisions, including collisions with obstacles within the clearance profile	Derailments	Accidents on level crossings, including those shared with pedestrians	Accidents resulting in personal injury caused by moving railway vehicles, not including suicides	Vehicle fires	Other accidents
Total number of seriously injured persons	149	10	0	45	39	0	55
Average number of seriously injured persons	0.147	0.010	0	0.044	0.038	0	0.054
OF which:							
Passengers	65	2	0	1	14	0	48
Average number of seriously injured passengers	0.064	0.002	0	0.001	0.014	0	0.047
Average number of seriously injured passengers per thousand million passenger km	0.836	0.026	0	0.013	0.180	0	0.617
Staff	18	8	0	4	5	0	1
Average number of seriously injured staff	0.018	0.008	0	0.004	0.005	0	0.001
Users of level crossings	39	0	0	39	0	0	0
Average number of seriously injured users of level crossings	0.038	0	0	0.038	0	0	0
Trespassers on railway property	27	0	0	1	20	0	6
Average number of seriously injured trespassers on railway property	0.027	0	0	0.001	0.020	0	0.006
Other persons	0	0	0	0	0	0	0
Average number of other seriously injured persons	0	0	0	0	0	0	0



1.2.2. Fatalities

	<i>All accident types</i>	Train collisions, including collisions with obstacles within the clearance profile	Derailments	Accidents on level crossings, including those shared with pedestrians	Accidents resulting in personal injury caused by moving railway vehicles, not including suicides	Vehicle fires	Other accidents
Total number of fatalities	192	10	0	50	142	0	0
Average number of fatalities	0.189	0	0	0.049	0.140	0	0
Of which:							
Passengers	18	0	0	0	18	0	0
Average number of passengers killed	0.018	0	0	0	0.018	0	0
Average number of passengers killed per thousand million passenger km	0.231	0	0	0	0.231	0	0
Staff	6	0	0	0	6	0	0
Average number of staff killed	0.006	0	0	0	0.006	0	0
Users of level crossings	50	0	0	50	0	0	0
Average number of users of level crossings killed	0.049	0	0	0.049	0.000	0	0
Trespassers on railway property	118	0	0	0	118	0	0
Average number of trespassers on railway property killed	0.116	0	0	0	0.116	0	0
Other persons	0	0	0	0	0	0	0
Average number of other persons killed	0	0	0	0	0.000	0	0



2. Indicators relating to disruptions and near misses

Total number and average number of disruptions and near misses (based on millions of kilometres travelled), broken down into the following categories

	All disruptions and near misses	Cracks on the rails	Bowing of the rails	Signalling faults	Dangerous ignoring of a stop signal	Wheel cracks	Axle cracks
Total	207	124	72	0	568 ²⁾	2	9
Average	0.204	0.122	0.071	0.000	0.559	0.002	0.009

3. Indicators relating to the consequences of accidents

Costs and hours spent were not recorded in the reporting year.

4. Indicators relating to the technical safety of the infrastructure and its implementation

Percentage share of sections with automatic train safety	<i>Not available</i>
Percentage share of train kilometres travelled using operational train safety systems	Not available
Number of level crossings	20317
Number of level crossings per kilometre	0.59
Percentage share of automatically or manually protected level crossings	54%

5. Indicators relating to the safety management system

The Safety Directive had not yet been implemented in the reporting year.

¹⁾ Data source is the database of dangerous incidents reported to the EBA; for definitions used, see Part C.2.

²⁾ Not included in the total, cf. definition in Part C.2



C.2. Definitions used in the annual report

C.2.1. Applicable definitions pursuant to Regulation 91/03:

Fatalities

Anyone who dies either immediately after an accident or within 30 days as a result of injuries sustained in accident - apart from people committing suicide;

Seriously injured persons

Any injured person spending more than 24 hours in hospital after an accident, apart from people committing suicide;

Passenger kilometres

The unit of measurement for the transportation of a passenger by rail over a distance of one kilometre. Only the distance covered in the territory of the reporting country is taken into account;

Passenger

A person travelling by rail who is not a member of staff. For the purposes of the accident statistics, passengers who try to jump on or off a moving train are included;

Suicide

An act of deliberate self-harm resulting in death, as registered and classified by the relevant national authority;

Significant accident

Any accident involving at least one moving railway vehicle in which at least one person is seriously injured or killed or which results in extensive damage to the vehicle, the tracks, other equipment or the surrounding area or considerable disruption to services. Accidents that occur in workshops and stores and at operational sites are excluded;

Train

One or more railway vehicles pulled by one or more locomotives or railway vehicles, or a single moving railway vehicle travelling under a specific number or a separate designation from a fixed starting point to a fixed finishing point. Empty locomotives (locomotives running on their own) are not counted as trains;

Train kilometres

The unit of measurement for the movement of a train over a distance of one kilometre. The distance taken into account is - where known - the distance actually travelled; otherwise, the standard network distance between the start and end point is used. Only the distance covered in the territory of the reporting country is measured;



C.2.2 National provisions

The CSIs are determined on the basis of the following national provisions, which are used in reports given by the rail transport undertakings involved:

a) Supplements to Regulation 91/03

Passenger ('person travelling')

User of railway vehicles or platform facilities (including entrances and exits), apart from staff of rail transport undertakings when on duty.

Seriously injured persons

People who are incapable of working for more than three days as a result of injuries sustained in a rail accident.

b) National definitions

Train collision

The running of one railway vehicle into another.

Collision with obstacles within the clearance profile

Hitting an obstacle in the normal clearance, but not another railway vehicle. This does not affect industrial accidents.

Derailment

The slipping or raising of a railway vehicle off the track, even if it corrects itself, or the running of a railway vehicle on two tracks.

Accident on a level crossing ('collision')

The collision of a railway vehicle and a road user on a level crossing.

Accident involving people ('collision with people')

Hitting people (not passengers) in the standard clearance. This does not affect industrial accidents.

Vehicle fire

Open fire in or on a railway vehicle.

Other accident

Any accident that does not fall into any of the other categories.



Dangerous ignoring of a stop signal ('missing a signal')

In Germany, a missed signal is currently recorded every time a stop signal is ignored, irrespective of whether there was a danger or not. No distinction can currently be made between 'safe' and 'dangerous'. As a result, this category only includes missed signals caused by a mistake by the traction vehicle driver. The proportion of dangerous incidents here is about 1 %, so the number of incidents that were actually dangerous is well below the stated number of 568 cases.

Wheel crack ('defect in / damage to wheel disc')

Broken wheel disc or loose wheel tyre.

Axle breakage ('defect in / damage to axle')

Breakage of the axle.

User of level crossings

Any road user who uses a level crossing in a vehicle or on foot.

Staff

Personnel of a rail transport undertaking, either on duty or on the way to or from work.

Trespassers on railway property

People who gain access to or use a railway facility or a vehicle without official permission in that they are not making general use of the transport service provided and have no special right to use it.



Eisenbahn-Bundesamt
Federal Railway Authority

C.3. Abbreviations

CSI	Common Safety Indicator
ERA	European Railway Agency
BÜ	Level crossing
Million	10^6
Thousand million	10^9



ANNEX D: Important legal and regulatory changes

	Law	Date on which the law came into force	Reason for the introduction (give details of the new law or change to the existing law)	Description
General national law on railway safety				
Legislation on the national safety authority	First law amending the General Railway Act of 13.12.2006 (Federal Law Gazette I-2919)	19.12.2006	Amendment of the General Railway Act implementing Directives 96/48/EC and 2001/16/EC, last amended by Directive 2004/50/EC, in national law	<ul style="list-style-type: none"> Competence of the EBA for keeping the National Vehicle Register
Legislation on the Named Offices, experts, third offices for registration, examination, etc.	First law amending the General Railway Act of 13.12.2006 (Federal Law Gazette I-2919)	19.12.2006	Amendment of the General Railway Act implementing Directives 96/48/EC and 2001/16/EC, last amended by Directive 2004/50/EC, in national law	<ul style="list-style-type: none"> Performance of the tasks of a Named Office pursuant to Directives 96/48/EC and 2001/16/EC by EBC Conditions for the transfer of tasks of a Named Office to private undertakings
National provisions on rail safety				
Provisions on the requirements for the approval of commissioning of infrastructure (sections of track, bridges, tunnels, power, ATC, radio, signals, level crossings, platforms, etc.)	Acceleration of Infrastructure Planning Procedures Act of 9.12.2006 (Federal Law Gazette I-2833)	17.12.2006	Cross-sector acceleration of infrastructure planning procedures (rail, road, waterways, energy)	In particular, replacement of the old Article 18 of the General Railway Act with new Articles 18 to 18e of the General Railway Act: detailed revision of planning law for railway infrastructures.



ANNEX E: Drawing up safety certificates and safety licences – Figures

E.1. Safety Certificates pursuant to Directive 2001/14/EC

Number of Safety Certificates issued pursuant to Directive 2001/14/EC, received by licensed rail transport undertakings in 2006	in Germany	201
	in another Member State	6

Annex E will in future contain other tables providing various data on safety certificates and safety licences in accordance with the Safety Directive. This part only becomes relevant in the next annual report (introduction of the Safety Directive in Germany, cf. Chapter F).