

DŘÁŽNÍ ÚŘAD (RAIL AUTHORITY)

Wilsonova 300/8

121 06 Praha 2 - Vinohrady

Czech Republic

ANNUAL REPORT

on activities of the Rail Authority for year of 2006

Prague, 25 September 2007

A.1. Scope of the report:

A.1. Scope of the report:	2
A.2. Summary:	3
B. Introductory Section	3
1. Introduction to the report	3
2. Railway Structure Information	3
3. Summary – General Trend Analysis.....	4
4. The Safety Directive - Stage of implementation	5
C. Organisation	5
1. Introduction to the organisation	5
2. Organisational flow – relationship.....	6
D. The development of railway safety	7
1. Initiatives to maintain/improve safety performances	7
2. Detailed data trend analysis	7
E. Important changes in legislation and regulation on railway safety in 2006	8
F. The development of safety certification and authorisation.....	8
G. Supervision of Railway Undertakings and Infrastructure Managers.....	8
H. Conclusions – Priorities – Results of safety recommendations.....	11
I. Annexes	12
Abbreviations.....	12

A.2. Summary:

The Annual report on activities of the Rail Authority generally evaluates the results of provision of railway operation safety and of railway operations in the Czech Republic for year of 2006. It provides a review and information on the railway structure, and at the same time, it shows conditions of gradual performance and implementation of Safety Directive to the national legal regulations. In compliance with the proposed template, it provides the informative Organization chart of the Rail Authority in relation to the function of the safety authority. It analyzes development of railway safety in 2006, and results and experiences concerning supervision of infrastructure managers and railway undertakings. The Report is supplemented with Annexes, which contain a map of the railway network in the Czech Republic, information on infrastructure managers and railway undertakings, who participate in the operation. The registration review on incidents forms another Annex.

B. Introductory Section

1. Introduction to the report

The Rail Authority prepared the Annual report on its activities, which contains the following information:

- a) development of railway safety, including CSI summary at the level of the Czech Republic,
- b) important changes in legislation and regulations concerning railway safety,
- c) development of granting the safety certification and authorisation,
- d) results and experiences concerning supervision of infrastructure managers and railway undertakings.

The Report is designed for infrastructure managers, railway undertakings, other national safety authorities, EU authorities, and all present and future undertakers in the area of railway transport.

2. Railway Structure Information

Railway network in the Czech Republic is formed of nationwide railway and regional railways, mostly State owned, and in administration of the Railway Infrastructure Administration, state organization.

The length of the railway network of the Czech Republic amounted 9,593 km as to 31 December 2006, out of it 7,742 km single-track lines, 1,812 km double-track lines, and 39 km multiple track lines. Out of the total length of the network, 9,492 km were standard gauge lines, and 101 km narrow-gauge lines. The share of electrified tracks was on the whole 3,038 km, out of it 1,288 km single-track lines, and 1,750 km double-track and multiple track lines. According to energy-supply systems, 1,731 km of tracks were electrified with DC voltage (3,000 V DC, or 1,500 V DC), and 1,307 km

with AC voltage (25 kV/50 Hz). The total construction length of tracks was 15,476 km. In the railway network of the Czech Republic, there were 6,691 bridges in total length over 147 km, 154 tunnels in total length over 38 km, and 8 576 level crossings.

No high-speed lines are constructed in the territory of the Czech Republic.

The national railway and a major part of the regional railways are operated by the Czech Railways, j.s.c. (*České dráhy a.s.*)

A map of the network is shown in Annex A.1.1 with marked Trans-European Railway Network in the Czech Republic, and in Annex A.1.2 with marked lines according to the number of tracks, electric traction, etc.

The rail transport in the Czech Republic is operated for the purpose of public transport of persons and goods. A special rail transport is then operated with the view of transport of special vehicles for maintenance work on infrastructure, measuring infrastructure, rides of so-called historical and nostalgic trains, and for tests of vehicles under operational conditions. The Czech Railways, j.s.c. are the decisive railway undertaking (operator) operating the rail transport on the railway network of the Czech Republic.

The list of individual infrastructure operators is given in Annex A.2.1.

The list of individual railway undertakings (operators) is given in Annex A.2.2.

Note: If vehicles, numbers of employees, etc., are not specified with the operator in the list, he provides these resources by contracts with other operators.

3. Summary – General Trend Analysis

D Development of railway safety

Development of safety was standard in 2006, and it is impossible to compare it with previous years. The Rail Authority draws up a report of this content for the first time. In comparison with previous periods, suicides are exempted from the statistics. However, it is necessary to draw attention to the fact that it is difficult to distinguish, which fatal accident is a suicide.

Safety measures were not issued in 2006. Otherwise the obligation appertains to an inspection authority, which in the Czech Republic is the Rail Safety Inspection.

E Important changes in legislation and regulations

In the Czech Republic, amendments were carried out in Act on rail systems and implementing regulations, which transposed the rules of the 2nd railway package.

F Development of safety certification and authorisation

No new safety certificates were issued in 2006. So far issued certificates to Directive 2001/14/EC are in force till now.

G Supervision of railway undertakings and infrastructure managers

The Rail Authority executes the State supervision of railway operations, operations of railway transport, and over maintenance execution.

4. The Safety Directive - Stage of implementation

Directive 2004/49/EC of the European Parliament and of the Council has been implemented into national law by the act (Act No. 181/2006 Coll.) amending the Act No. 266/1994 Coll., on rail systems, as amended, and by an implementing regulation – Regulation No. 376/2006 Coll., on the safety system of operation of rail and rail transport, which came into force on 1 July 2006. The relationship of the Rail Authority with other National Bodies is stated in Annex B.2. The Rail Authority exercised some of the functions of the national safety authority already before implementation. In preparation of the Annual Report, the Rail Authority started from recommendation of ERA - Proposed Draft Template Version 10 of 8 March 2007, Proposed Draft Guidelines Version 5, and further from data acquired from reports of the infrastructure managers and railway undertakings, and from its own findings. The Rail Authority did not carry out revision of the presented data, since it was not feasible within the frame of its capacities.

Within the frame of increasing safety on tracks in the Czech Republic, implementation of the following measures took place in 2006:

- | | |
|---|----------------|
| — fitting the tracks with an automatic block system: | + 18 km |
| — fitting the tracks with semi-automatic relay block system | + 82 km |
| — fitting the railway stations with electronic train control system | + 28 stations |
| — fitting the railway crossings with a new train control system | + 17 crossings |
| — railway crossings were cancelled in a number of | + 31 |

Note: The automatic block system operates on the line system LS and provides transmission of signals to the post of the driver. However, if attendance of the "vigilance button" occurs on the vehicle, the system is already unable to guarantee stopping the train at stop signal (no movement authority).

C. Organisation

1. Introduction to the organisation

The Rail Authority is a rail administrative authority established by Act No. 266/1994 Coll. on rail systems, as amended, (hereinafter the "Act on rail systems"), as the State administration body with a seat in Prague; it is subordinated to the Ministry of Transport.

Organization chart of the Rail Authority is given in Annex B.1.

The Rail Authority performs the following functions:

- | | |
|--|--------------|
| • regulatory authority in the sense of Act on rail systems | 7 employees |
| • national safety authority in the sense of Directive 2004/49/EC | 50 employees |
| • authority for RID (carriage of dangerous goods) | 6 employees |
| • it fulfils other tasks of national legislation | 57 employees |
| • the special Building authority in the sense of Act on rail systems | |

- supervision of products in the sense of Act No. 22/1997 Coll.
- approval of professional competence of persons authorized to drive rail vehicles, persons performing revisions, inspections and tests of the facilities
- hearing of administrative infractions and administrative torts in the sense of Act on rail systems
- State supervision according to Act on rail systems
- approval of vehicles and structures on railway sidings, municipal tracks, approval of trolleybus systems and cableway installations, and drag lifts.

2. Organisational flow – relationship

Organisation chart of the Rail Authority is given in Annex B.1.

The following can be mentioned to the individual sections:

The Construction section executes the function of a special building authority for rail system construction and building structures on the rail system

- approves project documentations, issues building permits, and puts structures into operation
- assesses the railway infrastructure in the light of interoperability.

Technical section provides with its departments as follows:

- approves and sets down conditions for carriage of dangerous goods
- approves of electrical equipment of Energy sub-system and Control-Command and Signalling subsystem
- approves rail vehicles
- approves pressure, hoisting, transporting, and gas equipment
- assesses data for issuing safety certificates for the operational section
- processes data for approval of structures by the construction section

Operational section provides with its departments as follows:

- issues official permission for operation of the rail system
- issues certificates on safe operation of the rail system
- grants licence for operation of rail transport
- issues safety certification of operators
- approves professional competence of persons authorized to drive rail vehicles.

Relationship of the Rail Authority with other National Bodies and other subjects is given in Annex B.2

D. The development of railway safety

1. Initiatives to maintain/improve safety performances

As already mentioned in part B.3, no safety measures were taken during 2006, about which the Czech Republic would make decisions. Particular measures were only taken to discovered defects, which were found during investigation of accident events. Further, measures were taken to remove defects found at execution of the State supervision.

Table D.1.1 - Safety measures triggered by accidents/precursors to these

Safety measure decided	Accidents		
	Date	Place	Description of the event
-	-	-	-

Table D.1.2 - Safety measures with other triggers

Safety measure decided	Description of the trigger of the measures
-	-

2. Detailed data trend analysis

Basic data in the area of accident rate:

- Number of accident 282
- Number of fatalities 52
- Total number of injures 231
- Total number of serious injuries 89
- Number of incidents 61
- Recorded costs for removing damages 3 015 498 €

Development of railway safety for year of 2006 is further given in Annex C.

E. Important changes in legislation and regulation on railway safety in 2006

Important changes in legislation and regulation on railway safety in 2006 are given in Annex D.

F. The development of safety certification and authorisation

Summary of development of safety certification is given in Annex E.

For issuing safety certificates (safety certification of railway undertakings) according to Article 10 of Directive 2004/49/EC, the date was fixed as of 1 August 2006.

For issuing safety authorisation (safety certification of infrastructure managers) according to Article 11 of Directive 2004/49/EC, the date was fixed as of 1 August 2006.

At present, the list of national safety regulations for railway undertakings and infrastructure managers is under revision of these regulations, and after its completion, the list will be made public on web pages of the Rail Authority.

According to the original provisions of Act on rail systems, two safety certificates of railway undertaking were issued in 2006. Since 1 July 2006, an amendment has been implemented into the Act on rail systems (including implementing regulations 376/2006 Coll.) in a link to Directive 2004/49/EC. Other applications from that date were settled only in 2007. For the sake of completeness, it is necessary to state that at present, submission of an application is required in compliance with Commission Regulation (EC) No. 653/2007.

Safety authorisations (safety certification of infrastructure managers) were not issued nor discussed in 2006.

Summary of totally issued safety certificates of railway undertaking since 2001 by the end of 2006 is given in Annex A.2.2 - part 2.

The date for submission of application for a new safety certificate of railway undertaking is fixed by the end of 2007.

Administrative fee for issuing the safety certificate is CZK 1000, i.e. ca. € 36.

G. Supervision of Railway Undertakings and Infrastructure Managers

1. Supervision of Railway Undertakings and Infrastructure Managers

In 2006, performance of the state supervision was focused by the Rail Authority on fulfilment of obligations given by the Act on rail systems and implementing regulations for infrastructure managers, and railway undertakings (operators).

The summary is given in the following table:

The state supervision focused on:	Number of supervision:	Number of shortcomings:
railway undertakings (operators)	191	47
infrastructure managers	539	160
Total	730	207
out of it on railway crossings	226	80

Character and type of individual faults is given in the following table:

Fault category	Total number of faults
Unmarked or unsecured railway crossing with ground-based roads at the rail level, or its marking and securing in conflict with conditions stipulated by the rail administration authority.	69
Not removed sources of imperilment of the rail system or disturbance of rail operation.	5
Unsecured maintenance and repairs of the rail systems within the scope necessary for its availability, and making connection of the rail system with other rail systems not possible.	54
Unsecured operation of the rail system, or making operation of the rail system by another authorized person not possible.	4
Operation of the rail systems in conflict with rules for the rail system operation and official permission.	1
Not issued internal ruling about rail system operation and about professional competence and qualification of persons providing operation of the rail system and a method of their verification, including the system of regular training, or incompleteness of its content.	1
Allowing performance of activities in operation of the rail systems to a person, who is not professionally competent or due to health reasons.	1
Unpublished timetables and their changes for public railway passenger transport.	5
Unmarked names of stations (stops), which he operates, by the rail system operator.	17
Operation of the rail transport in the national or regional rail systems without valid safety certificate of the transport operator.	1
Not issued internal ruling about professional competence and qualification of persons providing operation of the rail system and a method of their verification, including the system of regular training, or incompleteness of its content.	4
Not issued internal ruling about organizational provision of maintenance of rail vehicles.	1
Operation of rail vehicles without valid certificate of worthiness.	11
Operation of rail vehicles in the technical conditions, which do not correspond to the approved worthiness.	21
Violation of conditions of carriage stipulated for carriage of dangerous goods.	1
Operation of rail vehicle, technical worthiness of which was not evidenced by conformity with an approved type.	3
Failure to perform regular technical inspections of the rail vehicle.	3
Deficiencies in marking the rail system facilities.	2

Failure to perform regular inspections and measuring of the rail system structures in compliance with building regulations of the rail system.	3
Total	207

To remove deficiencies and detected defects, relevant corrective measures were always taken from the part of infrastructure managers and railway undertakings (operators), and their fulfilment was verified, if possible.

In the Rail Authority, 105 persons, i.e. 83% out of the total number of employees, are commissioned with execution of the State supervision. In light of financial costs, the execution of the State supervision is in an amount of CZK 320 thousand, i.e. 0.5% of the total costs of operation of the Rail Authority.

2. All annual reports on safety of all railway undertakings and infrastructure managers were submitted according to Article 9 of Safety Directive in the specified date.

		Issued Safety Certificates Part A	Issued Safety Certificates Part B	Issued Safety Authorisations	Other Activities
3. Number of inspections of RUs/IMs carried out in 2006	planned	0	0	0	0
	carried out	0	0	0	0

		Issued Safety Certificates Part A	Issued Safety Certificates Part B	Issued Safety Authorisations	Other Activities
4. Number of audits of RUs/IMs carried out in 2006	planned	0	0	0	0
	carried out	0	0	0	0

5. With respect to the fact that audits were not carried out in 2006, it is impossible to carry out their evaluation.

6. Complaints from the part of infrastructure managers against railway undertakings were not lodged in 2006.

7. Complaints from the part of railway undertakings against infrastructure managers were not also lodged in 2006.

H. Conclusions – Priorities – Results of safety recommendations

In the field of provision of tasks resulting from the function of the safety authority in the Czech Republic, the activities of the Rail Authority in 2006 were especially focused on provision of information in a link to the implementing regulation - Decree No. 376/2006 Coll., for issuing the safety authorisation of nation-wide or regional infrastructure managers, and for issuing safety certificate for operators on nation-wide or regional rail systems.

The execution of the State supervision was focused on railway undertakings and infrastructure managers, especially how they fulfilled responsibilities stipulated by legal regulations in the field of provision of railway operation safety.

The major attention was then aimed at application of issued TSIs, where there was a marked difference in their application by individual obliged subject.

For other activities, the Rail Authority, as a safety authority, will focus in the next period on consistent execution of safety audits of infrastructure managers and railway undertakings on nation-wide or regional rail systems. At the same time, it will aim at checks of fulfilment of safety measures proclaimed by the Rail Safety Inspection Office in 2007.

The Rail Authority prepares a change in the organizational chart so that it best matches the requirements posed both by EC legislation and national legislation.

I. Annexes

A. Railway Structure Information

- A.1. Network map
- A.2. Infrastructure managers
- A.2. Railway undertakings

B. Organisational flow – relationship

- B.1. Organization chart of the Rail Authority
- B.2. Relationship of the Railway Authority with other national bodies

C. CSI Data – Evidence summary of incidents

Annex D. Important changes to legislation and regulations

Annex E. The development of safety certification and authorisation – Numerical Data

Abbreviations

CSI	Common Safety Indicator
ERA	European Railway Agency
LC	Level Crossing
MLN	10 ⁶
BLN	10 ⁹
NSA	Network Safety Authorities
RS	Rolling Stock
RU/IM	Railway Undertaking and Infrastructure Manager

Annex A. Railway Structure Information

A.1.1 Network map

M02 Kategorie drah, provozovatelé drah a označení podle sešitového a nákrasného jízdního řádu
Category of railways, rail system operators and denomination pursuant to book timetables or graphical timetables

drahy celostátní / nation-wide rail system:

— tratě transevropské železniční sítě nákladní dopravy (TERFN)
line of TERFN
— ostatní dráhy celostátní
the other lines of TERFN

provozovatel drah celostátních / operator of nation-wide rail system:

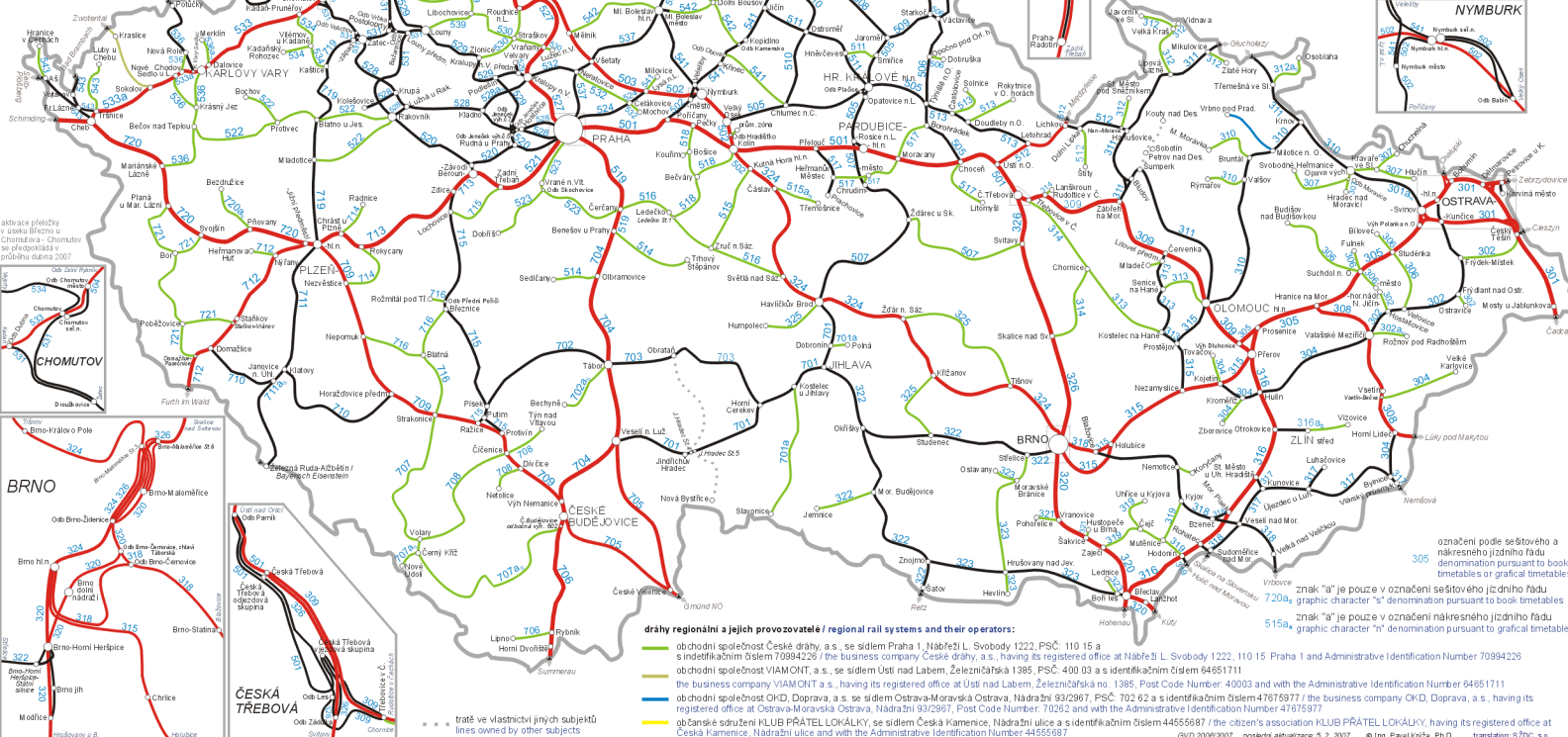
obchodní společnost České dráhy, a.s., se sídlem Praha 1, Nábřeží L. Svobody 1222, PSČ: 110 15 a.s. indetifikacním číslem 70994226
the business company České dráhy, a.s., having its registered office at Nábřeží L. Svobody 1222, 110 15, Praha 1 and Administrative Identification Number 70994226

obchodní společnost VÍAMONT, a.s., se sídlem Ústí nad Labem, Železnižská 1385, PSČ: 400 03 a.s. indetifikacním číslem 84851711
the business company VÍAMONT, a.s., having its registered office at Ústí nad Labem, Železnižská 1385, PSČ: 400 03 and with the Administrative Identification Number 84851711

obchodní společnost OKD, Doprava, a.s., se sídlem Ostrava-Moravská Ostrava, Nádražní 93/2967, PSČ: 702 62 a.s. indetifikacním číslem 47675977
the business company OKD, Doprava, a.s., having its registered office at Ostrava-Moravská Ostrava, Nádražní 93/2967, PSČ: 702 62 and with the Administrative Identification Number 47675977

občanské sdružení KLUB PRÁTEL LOKÁLKÝ, se sídlem Česká Kamenice, Nádražní ulice a.s. indetifikacním číslem 44555687
the citizen's association KLUB PRÁTEL LOKÁLKÝ, having its registered office at Česká Kamenice, Nádražní ulice and with the Administrative Identification Number 44555687

— tratě ve vlastnictví jiných subjektů
lines owned by other subjects



Annex A. Railway Structure Information

A.1.2 Network map

M05 Počty traťových kolejí, systémy trakčních proudových soustav a označení podle tabulek traťových poměrů
 Number of tracks, electrification systems and
 denomination pursuant to the table of line conditions

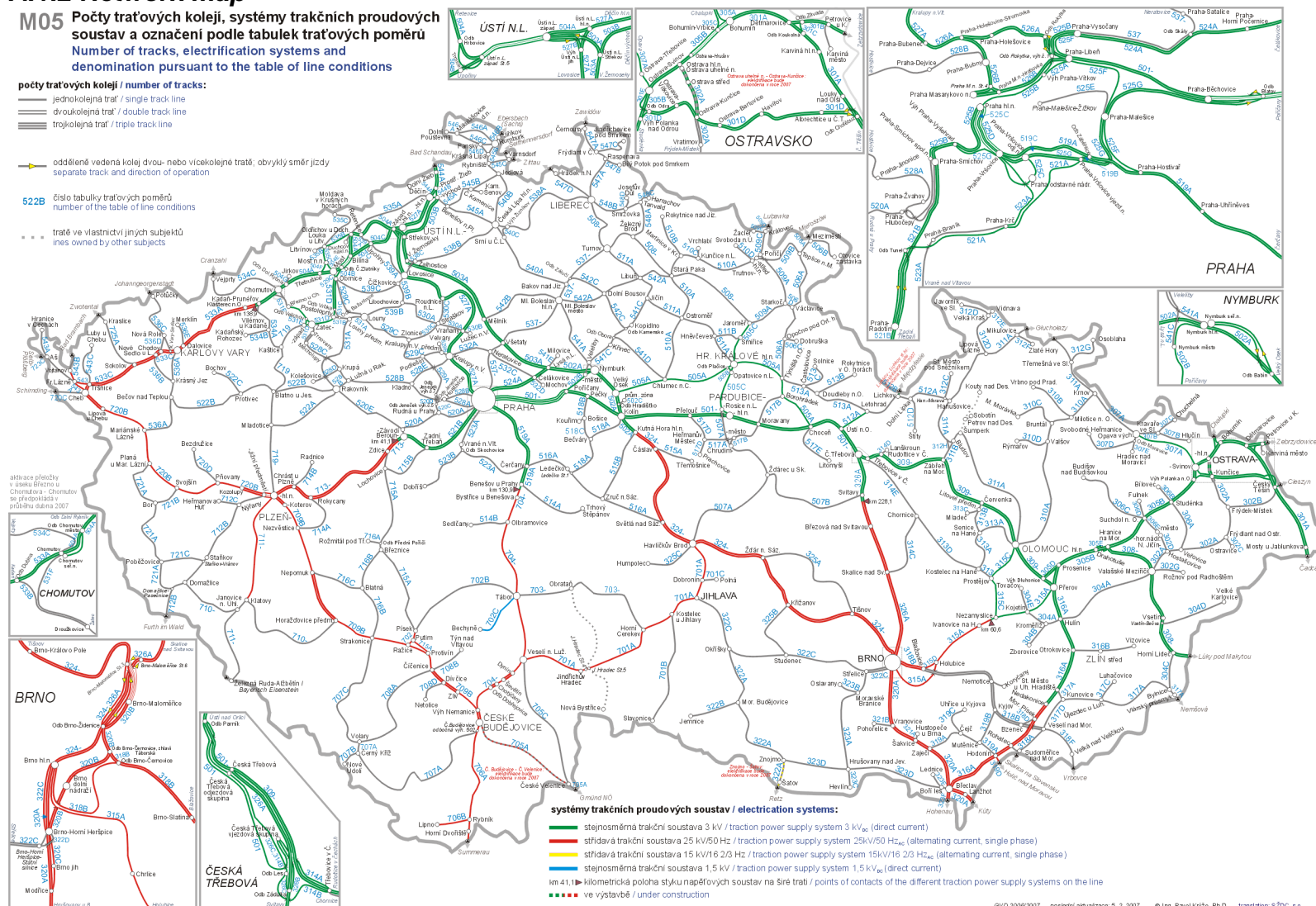
počty traťových kolejí / number of tracks:

— jednokolejná trať / single track line
 — dvoukolejná trať / double track line
 — trojkolejná trať / triple track line

— odděleně vedená kolej dvou- nebo vícekolejná tratě, obvyklý směr jízdy
 separate track and direction of operation

522B číslo tabulky traťových poměrů
 number of the table of line conditions

••• tratě ve vlastnictví jiných subjektů
 lines owned by other subjects



Annex A. Railway Structure Information
A.2.1. Infrastructure Manager(s)

Name	Safety Authorisation (Number/Date)	Start Date commercial activity	Total Track Length/Voltage	Electrified Track Length/Voltages	Total Double/Simple Track Length	ATP Equipment used (%)	Number of LC	Number of Signals
České dráhy, a.s.	UP/2003/9000 (17.9.2003)	1.11.2003	9430/1435	2994	7579/1851	16	8321	14748
Jindřichohradecké místní dráhy, a.s.	UP/1997/8001(6.6.1997)	14.6.1997	79/760	0	79/0	0	134	33
	UP/1997/8003 (10.10.1997)	1.11.1997						
KLUB PŘÁTEL LOKÁLKY	UP/1998/8011 (26.8.1998)	19.9.1998	5/1435	0	5/0	0	7	2
OKD, Doprava, akciová společnost	UP/1997/8005 (30.12.1997)	25.1.1998	20/1435	0	20/0	0	26	9
SART-stavby a rekonstrukce a.s.	UP/2005/8014 (23.3.2005)	15.4.2005	22/1435	0	22/0	0	53	10
VIAMONT a.s.	UP/1997/8002(10.12.1997)	12.12.1997	37/1435	0	37/0	0	35	16
	UP/1998/8007 (3.6.1998)	1.7.1998						

Annex A. Railway Structure Information
A.2.2. Railway Undertaking(s)- part 1

Name	Address	Website/Network
AŽD Praha s.r.o.	Praha 10, Žirovnická 2/3146, PSČ 10617	http://www.azd.cz/
Connex Česká Železniční, s.r.o.	Chrudim, Na Ostrově 177, PSČ 53701	
Connex Morava a.s.	Ostrava - Moravská Ostrava, Vítkovická 3056/2, PSČ 70200	http://www.connexmorava.cz
České dráhy, a.s.	Praha 1, Nábřeží L. Svobody 1223, PSČ 110 15	http://www.cd.cz/
České soukromé dráhy spol. s r.o.	Chomutov, Štefánikovo náměstí 1566, PSČ 43001	
ČMKS-Jihlavská lokomotivní společnost s.r.o.	CZ Logistick, s.r.o., Česká Třebová, Bezručovo náměstí 580, 560 02	www.cmks.cz
DBV-ITL, s.r.o.	Kolín IV, Polepská 867, PSČ 28002	http://www.dbv-itl.cz/
Elektrizace železnic Praha a. s.	Praha 4, Nusle, nám. Hrdinů 1693/4a, PSČ 14000	http://www.elzel.cz/
GJW Praha spol. s r.o.	Praha 9 - Hloubětín, Mezitřaťová 137, 198 00	http://www.gjw-pha.cz/
Chládek & Tintěra, a.s.	Litoměřice, Nerudova 16, PSČ 412 1	http://www.cht.cz/
IDS - Inženýrské a dopravní stavby Olomouc a.s.	Olomouc, Albertova 229/21, 779 00	www.ids-olomouc.cz
INSKY spol. s r.o.	Ústí nad Labem, Nový svět 100, PSČ 40007	www.insky.cz
JARO Česká Skalice, s.r.o.	Česká Skalice, Havlíčkova 610, okres Náchod, PSČ 55203	www.jarocs.cz
Jindřichohradecké místní dráhy, a.s.	Jindřichův Hradec, Nádražní 203/II., 377 01	http://www.jhmd.cz/
Klub přátel lokálky, občanské sdružení	Česká Kamenice, Nádražní ulice, 613 00	www.kpl.cz
KK - provoz a opravy lok. s.r.o.	Býškovice, č.p. 108, 753 53	
KŽC Doprava, s.r.o.	Praha 9, Koloděje, Meinlinova 336, PSČ 19016	http://www.kzc.cz/
Lokálka Group, sdružení občanů	Rokycany, Plzeňská 334, PSČ 33701	http://www.lokalkagroup.cz/
LOKO TRANS s.r.o.	Brno, Voříškova 2, 623 00	http://www.lokotrans.cz
Mostecká uhelná a.s.	Most, V.Řezáče 315, PSČ 43467	http://www.mus.cz
MTH Praha a.s.	Praha 8, Kandertova 1a/1131, 180 00	www.mth.cz
N & N – Konstrukce a dopravní stavby Litoměřice s.r.o.	Litoměřice, Masarykova 31, 412 01	http://www.nanlitomerice.cz/
OKD, Doprava, akciová společnost	Ostrava - Moravská Ostrava, Nádražní 93/2967, 702 62	www.okd-doprava.cz/indexcz.html
Ostravská dopravní společnost, a.s.	Ostrava 1, Poděbradova 843/28, PSČ 70200	
Posázavský Pacifik - doprava s.r.o.	Čerčany, Nádražní čp. 25, PSČ 25722	http://www.posazavsky-pacifik.cz/
Puš s. r. o.	Dvůr Králové, Bezručova 1665, PSČ 54402	http://www.zelpage.cz/spolek/pus-s-r-o

RAILTRANS s.r.o.	Sokolov, Spartakiádní 1979/4, 356 01	www.railtrans.info/
RM LINES, a.s.	Litoměřice, Kořenského 1474/3, PSČ 41201	http://www.rmlines.cz
RUTR spol. s r.o.	Praha 4, Chodovská 7, PSČ 14100	www.rutr.cz
SANRE, spol. s r.o.	Bohumín, Nový Bohumín, Lidická č.p. 219, PSČ 73581	www.sanre.cz
SART-stavby a rekonstrukce a.s.	Šumperk, Uničovská čp. 2944/1 B, PSČ 78701	http://www.sart.cz
SEŽEV-REKO, s.r.o.	Brno, Maloměřice, Jarní 898/50, PSČ 61400	http://www.sezev-reko.cz/
SGJW Hradec Králové spol. s r.o.	Hradec Králové, Na Důchodě čp. 1674, PSČ 50002	http://www.sgjw.cz
Skanska DS a.s.	Brno, Bohunická 133/50, PSČ 61900	www.skanska.cz
SLEZSKOMORAVSKÁ DRÁHA a.s.	Ostrava, Slezská Ostrava, Michálkovická ul.č.86/1942, 710 00	www.slezskomoravskadraha.cz
Sokolovská uhelná, právní nástupce, a.s.	Sokolov, Staré náměstí 69, PSČ 35600	www.suas.cz
Společnost železniční výtopna Jaroměř	Jaroměř, Nádražní 227, 551 01	http://www.spolecnost-zeleznicni.cz/
Stavby silnic a železnic, a.s.	Praha 1, Národní třída 10, PSČ 11319	www.ssz.cz
Stavební firma CARDA-MÜLLER s.r.o.	Olomouc, Chválkovice, Chválkovická 332/17, 773 00	www.carda-muller.cz
STAVEBNÍ OBNOVA ŽELEZNIC a.s.	Olomouc, Mošnerova čp.1198/16, 772 00	www.soz.cz
TA Služby, a.s.	Plzeň, Tylova 1/57	www.tasluzby.cz
Teplický spolek železniční Ú.T.D.-sdruž.občanů	Teplice, Závodní 860, PSČ 41501	
TOMI - REMONT a.s.	Prostějov, Přemyslovka č.p. 2514/4, PSČ 79601	www.tomi-remont.cz
TORAMOS, s.r.o.	Český Těšín, ul. Tovární 1001/129, PSČ 73701	www.toramos.cz/
Trakce, a.s.	Ostrava-Moravská Ostrava a Přívoz, Hlávkova č. 428/3, PSČ 70200	www.trakce.cz
TRAMO RAIL, a.s.	Olomouc, Železniční 547/4, PSČ 77200	http://www.tramo-rail.cz
Traťová strojní společnost, a.s.	Pardubice, Hlaváčova 206, PSČ 53002	www.tssas.cz
UNIPETROL DOPRAVA, a.s.	Litvínov - Růžodol č.p. 4, 436 70 Litvínov	www.unipetrolodoprava.cz
VIAMONT a.s.	Ústí nad Labem, Železničářská čp.1385, PSČ 400 03	www.viamont.cz
Viamont DSP a.s.	Ústí nad Labem, Železničářská čp.1385, PSČ 400 03	http://www.viamont.cz/dsp/
VÍTKOVICE Doprava, a.s.	Ostrava-Vítkovice, Ruská 2887/101, PSČ 70602	http://doprava.vitkovice.cz/
ZABABA, s.r.o.	Praha 5, Pod Lipkami 1407/16, PSČ 15000	
Zubnická museální železnice, občanské sdruž.	Týniště 25, 403 23 Zubrnice	www.zmz.cz
ŽS Brno, a.s.	Brno-střed, Burešova 938/17, PSČ 66002	www.ohlzs.cz

A.2.2. Railway Undertaking(s)- part 2

Name	Safety Certificate 2001/14/EC (Number/Date)	Start date commercial activity	Traffic Type
AŽD Praha s.r.o.	OSD/2001/0039, (4.9.2001)	15.2.1996	T
Connex Česká Železniční, s.r.o.	OSD/2004/0074, (4.8.2004)	1.6.2004	OV
Connex Morava a.s.	OSD/2005/0082, (17.2.2005)	11.12.2005	OV
České dráhy, a.s.	OSD/2003/0069, (24.10.2003)	1.11.2003	OVLTNZ
České soukromé dráhy spol. s r.o.	OSD/2002/0042, 30.1.2002)	15.10.1996	NL
ČMKS-Jihlavská lokomotivní společnost s.r.o.	OSD/2001/0024, (12.4.2001)	20.11.1997	L
DBV-ITL, s.r.o.	OSD/2003/0066 (28.4.2003)	29.4.2003	VL
Elektrizace železnic Praha a. s.	OSD/2001/0029 (9.5.2001)	1.9.1996	T
GJW Praha spol. s r.o.	OSD/2001/0028, (13.7.2001)	15.10.1995	VT
Chládek & Tintěra, a.s.	OSD/2002/0056, (27.6.2002)	1.1.2002	OT
IDS - Inženýrské a dopravní stavby Olomouc a.s.	OSD/2002/0055, (19.2.2002)	20.8.2001	VT
INSKY spol. s r.o.	OSD/20001/0045, (1.10.2001)	1.1.1996	T
JARO Česká Skalice, s.r.o.	OSD/2002/0050, (9.7.2002)	23.4.2001	T
Jindřichohradecké místní dráhy, a.s.	OSD/2001/0016, (31.5.2001)	1.7.1997	NLT
Klub přátel lokálky, občanské sdružení	OSD/2000/0002 (24.11.2000)	1.11.1996	T
KK - provoz a opravy lok. s.r.o.	OSD/2003/0071, (8.12.2003)	15.12.2003	T
KŽC Doprava, s.r.o.	OSD/2006/0090,(13.6.2006)	15.3.2006	VONTL
Lokálka Group, sdružení občanů	OSD/2005/0083, (6.5.2005)	15.4.2005	OVN
LOKO TRANS s.r.o.	OSD/2001/0022, (31.5.2001)	29.5.1999	LTO
Mostecká uhelná a.s.	OSD/2005/0088, (5.10.2005)	8.8.2005	V
MTH Praha a.s.	OSD/2001/0043, (13.9.2001)	1.4.1996	LTO
N & N – Konstrukce a dopravní stavby Litoměřice s.r.o.	OSD/2001/0019, (13.7.2001)	13.7.1998	T
OKD, Doprava, akciová společnost	OSD/2001/0030, (20.6.2001)	1.5.1995	VN
Ostravská dopravní společnost, a.s.	OSD/2004/0079, (4.8.2004)	10.8.2004	VT
Posázavský Pacifik - doprava s.r.o.	OSD/2006/0077, (29.3.2006)	20.7.2004	OVT
Puš s. r. o.	OSD/2001/0040, (19.12.2001)	10.6.1995	VNO
RAILTRANS s.r.o.	OSD/2004/0070, (5.2.2004)	10.1.2004	NTVO

RM LINES, a.s.	OSD/2005/0089, (7.9.2005)	25.8.2005	V
RUTR spol. s r.o.	OSD/2001/0010, (20.7.2001)	1.1.2001	T
SANRE, spol. s r.o.	OSD/2001/0007, (19.4.2001)	15.8.1996	T
SART-stavby a rekonstrukce a.s.	OSD/2005/0085, (15.4.2005)	15.4.2005	T
SEŽEV-REKO, s.r.o.	OSD/2001/0009, (13.4.2001)	5.5.1997	T
SGJW Hradec Králové spol. s r.o.	OSD/2001/0023, (13.4.2001)	1.11.1995	T
Skanska DS a.s.	OSD/2003/0062, (11.2.2003)	1.9.2002	TV
SLEZSKOMORAVSKÁ DRÁHA a.s.	OSD/2001/0006, (2.2.2001)	20.3.1998	TV
Sokolovská uhelná, právní nástupce, a.s.	OSD/2001/0003, (30.3.2001)	15.6.1996	V
Společnost železniční výtopna Jaroměř	OSD/2002/0038, (4.1.2002)	1.11.1995	OVN
Stavby silnic a železnic, a.s.	OSD/2003/0067, (9.6.2003)	15.6.2003	T
Stavební firma CARDA-MÜLLER s.r.o.	OSD/2001/0054, (1.8.2001)	1.5.2001	T
STAVEBNÍ OBNOVA ŽELEZNIC a.s.	OSD/2001/0032, (23.10.2001)	1.3.1999	T
TA Služby, a.s.	OSD/2001/0017, (20.6.2001)	20.4.2001	L
Teplický spolek železniční Ú.T.D.-sdruž.občanů	OSD/2000/0004, (14.11.2000)	1.5.2000	N
TOMI - REMONT a.s.	OSD/2001/0036, (4.9.2001)	2.10.1995	T
TORAMOS, s.r.o.	OSD/2001/0025, (5.6.2001)	1.4.1996	T
Trakce, a.s.	OSD/2003/0063, (23.1.2003)	20.8.2002	T
TRAMO RAIL, a.s.	OSD/2001/0031, (19.4.2001)	31.3.2000	T
Traťová strojní společnost, a.s.	OSD/2005/0081, (7.3.2005)	1.2.2005	TV
UNIPETROL DOPRAVA, a.s.	OSD/2001/0037, (28.11.2001)	1.1.1996	V
VIAMONT a.s.	OSD/2001/0021, (14.5.2001)	2.10.1995	T
Viamont DSP a.s.	OSD/2002/0061, (21.8.2002)	10.11.2001	VT
VÍTKOVICE Doprava, a.s.	OSD/2004/0076, (30.8.2004)	10.6.2004	V
ZABABA, s.r.o.	OSD/2005/0075, (5.5.2005)	10.7.2004	VONTL
Zubnická museální železnice, občanské sdruž.	OSD/2001/0041, (8.8.2001)	3.3.1997	N
ŽS Brno, a.s.	OSD/2004/0080, (13.12.2004)	1.12.2004	V

Traffic Type:

O – passenger transport

V – freight transport

Z – transport of animals

T – transport track machinery

L – transport vehicles (locomotives) in connection with their repair and test

N – nostalgic driving

A.2.2. Railway Undertaking(s)- part 3

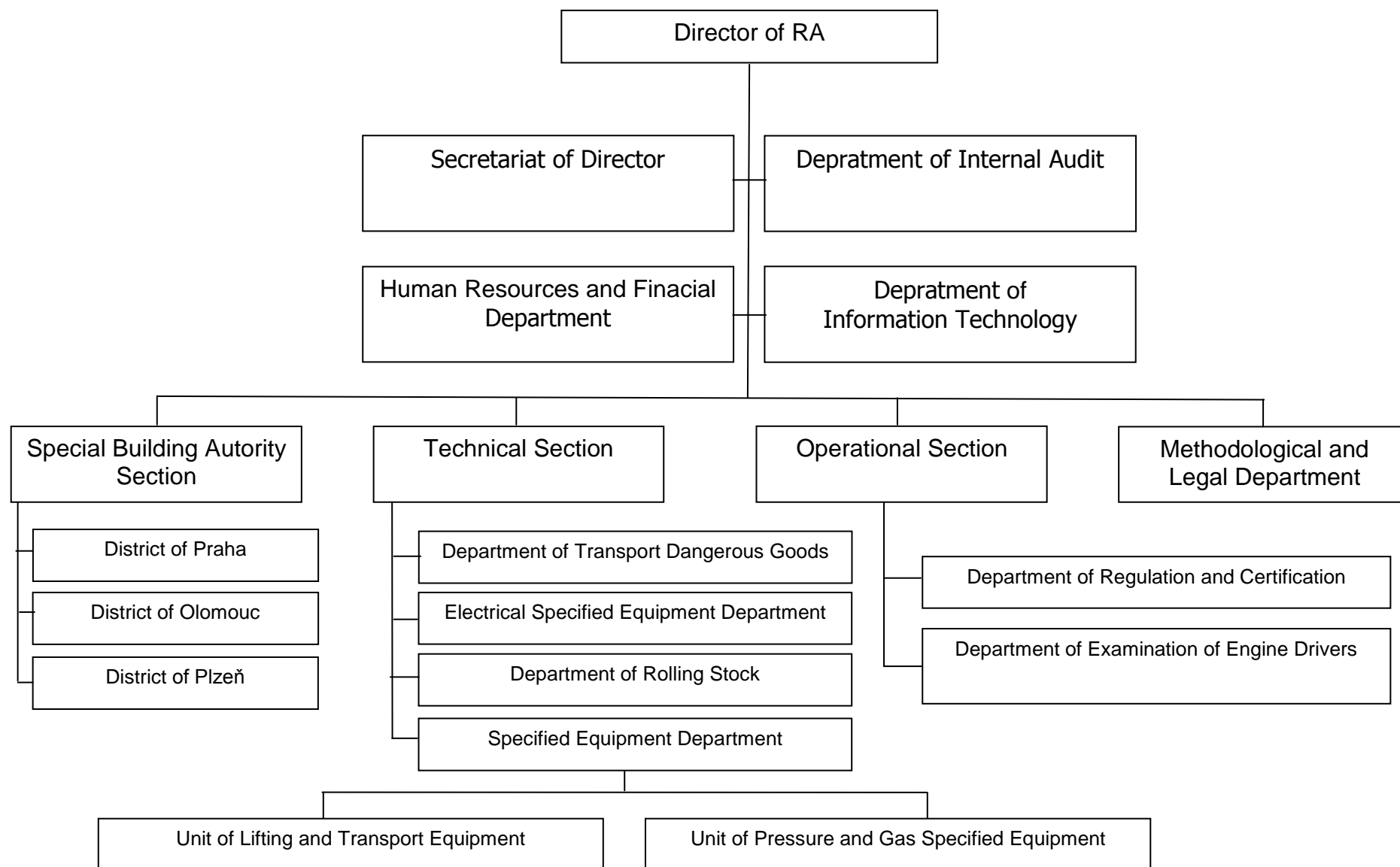
Name	Number of Locomotives	Number of Railcars/Multiple Unit-sets	Number of Coaches/Wagons	Number of train drivers/safety crew	Volume of passenger transport MLN. train km	Volume of freight transport MLN. train km
AŽD Praha s.r.o.	0	0	0/0	0/0	0	0,000444
Connex Česká Železniční, s.r.o.	0	0	0/0	1/1	0,004576	0
Connex Morava a.s.	4	0	3	9/9	0,003796	0
České dráhy, a.s.	1685	845	3507/32566	6530/3882	115,938298	39,80166
České soukromé dráhy spol. s r.o.	0	0	0/0	2/4	0,001807	0,00432
ČMKS-Jihlavská lokomotivní společnost s.r.o.	6	0	1/0	4/0	0	0,003822
DBV-ITL, s.r.o.	4	0	0/0	2/0	0	0,003677
Elektrizace železnic Praha a. s.	17	0	0/172	19/34	0	0,034322
GJW Praha spol. s r.o.	5	0	0/5	5/7	0	0,041761
Chládek & Tintěra, a.s.	3	0	0/6	3/0	0	0,029536
IDS - Inženýrské a dopravní stavby Olomouc a.s.	19	0	0/42	9/2	0	0,007683
INSKY spol. s r.o.	1	0	0/0	2/0	0	0
JARO Česká Skalice, s.r.o.	2	0	0/4	2/2	0	0,000477
Jindřichohradecké místní dráhy, a.s.	14	0	17/203	17/12	0,354	0
Klub přátel lokálky, občanské sdružení	2	1	20/0	10/0	0,0006	0
KK - provoz a opravy lok. s.r.o.	7	0	0/0	23/2	0	0,000451
KŽC Doprava, s.r.o.	0	0	0/0	0/0	0,005515	0,002641
Lokálka Group, sdružení občanů	3	0	0/1	4/4	0,004085	0
LOKO TRANS s.r.o.	7	0	0/0	10/0	0	0,024018
Mostecká uhelná a.s.	6	6	0/112	3/4	0	0,004601
MTH Praha a.s.	3	0	0/0	4/0	0	0,007759
N & N – Konstrukce a dopravní stavby Litoměřice s.r.o.	1	0	0/1	1/1	0	0,001182
OKD, Doprava, akciová společnost	108	0	2/2356	185/283	0,1651	0,639396
Ostravská dopravní společnost, a.s.	29	0	0/0	10/0	0	0,057914
Posázavský Pacifik - doprava s.r.o.	2	1	3/2	6/5	0,005005	0,001678

Puš s. r. o.	1	0	3/0	1/2	0,000394	0,001107
RAILTRANS s.r.o.	4	0	3/0	8/3	0,103356	0,020404
RM LINES, a.s.	0	0	0/0	0/0	0	0,00299
RUTR spol. s r.o.	0	0	0/0	0/0	0	0
SANRE, spol. s r.o.	0	0	0/0	0/0	0	0,000354
SART-stavby a rekonstrukce a.s.	1	0	0/0	2/0	0,242913	0,008165
SEŽEV-REKO, s.r.o.	6	6	0/6	9	0	0,006602
SGJW Hradec Králové spol. s r.o.	1	0	0/1	6/7	0	0,003607
Skanska DS a.s.	10	0	0/36	10/10	0	0,040536
SLEZSKOMORAVSKÁ DRÁHA a.s.	2	1	3/2	6/5	0	0,020663
Sokolovská uhelná, právní nástupce, a.s.	12	0	0/116	12/18	0	0,053209
Společnost železniční výtopna Jaroměř	3	0	5/3	1/0	0,014313	0,003488
Stavby silnic a železnic, a.s.	1	0	0/0	0/0	0	0,001883
Stavební firma CARDA-MÜLLER s.r.o.	1	0	0/0	1/0	0	0,00122
STAVEBNÍ OBNOVA ŽELEZNIC a.s.	0	0	0/0	0/0	0	0,000837
TA Služby, a.s.	0	0	0/0	0/0	0	0,000837
Teplický spolek železniční Ú.T.D.-sdruž.občanů	0	0	0/0	0/0	0,000008	0,000018
TOMI - REMONT a.s.	3	0	0/16	14/11	0	0,026844
TORAMOS, s.r.o.	2	0	2/1	0/0	0	0,000245
Trakce, a.s.	3	0	0/3	3/0	0	0,001144
TRAMO RAIL, a.s.	3	0	0/6	2/4	0	0,003335
Traťová strojní společnost, a.s.	94	0	0/724	147/87	0	0,374921
UNIPETROL DOPRAVA, a.s.	37	0	0/0	25/0	0	0,491127
VIAMONT a.s.	33		0/358	74/0	0,053	0,311162
Viamont DSP a.s.	6	0	0/49	29/1	0	0,038085
VÍTKOVICE Doprava, a.s.	2	0	0/34	2/5	0	0,014188
ZABABA, s.r.o.	2	0	2/1	0/0	0,001185	0,001166
Zubnická museální železnice, občanské sdruž.	0	0	0/0	0/0	0,001612	0,001686
ŽS Brno, a.s.	13	0	0/58	37/13	0	0,002024
Total					116,899563	42,099189
Total volume of transport MLN. train km						158,998752

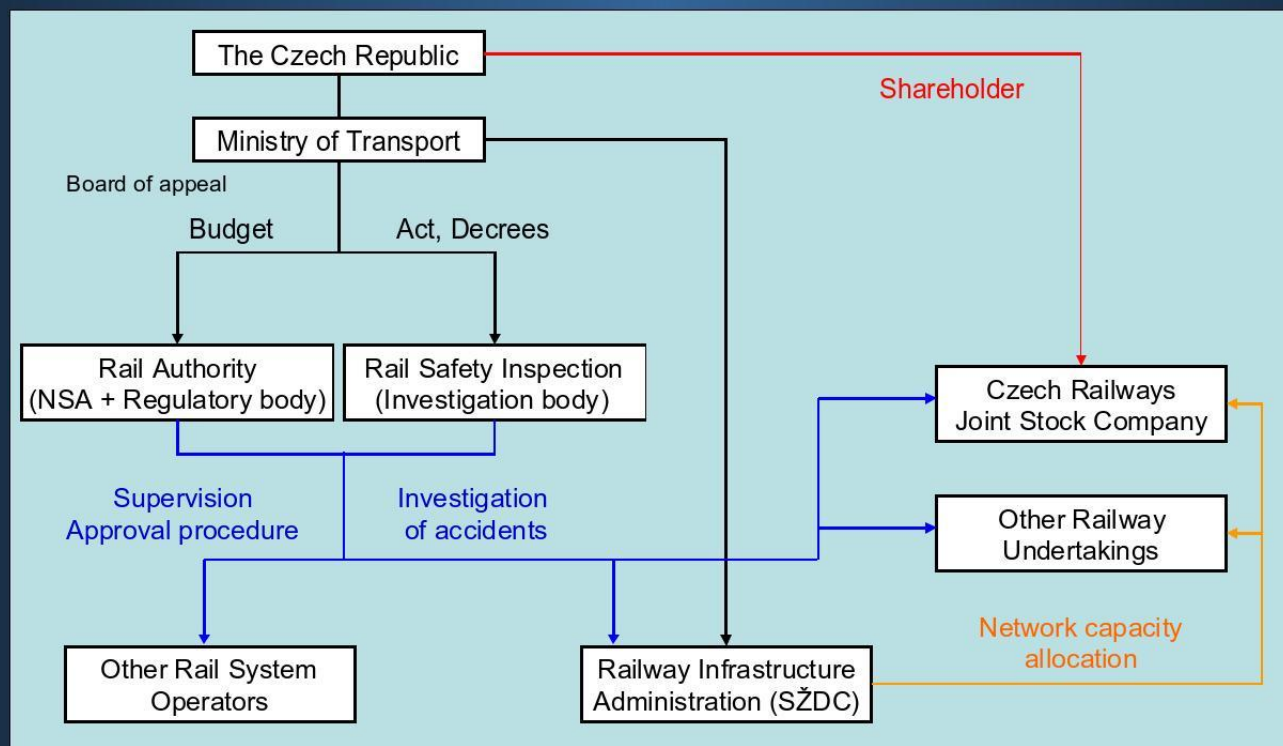
Annex B. Organisation chart(s) of the National Safety Authority

B.1 Chart: Internal organization

Organizational structure RA



Functional scheme of the rail sector in the Czech Republic



Annex D. Important changes to legislation and regulations

	Legal reference	Date legislation comes into force	Reason for introduction	Description
			(new law or amendment of existing law)	
General national railway safety legislation				
Legislation concerning the national safety authority	Act No. 181/2006 Coll.	1/7/2006	amendment to the existing Act No. 266/1994 Coll., on rail systems, as amended	transposition of Directives 2004/49/EC, 2004/50/EC, 2004/51/EEC, including the amendments thereto
Legislation concerning the national safety authority	Decree No. 376/2006 Coll.	1/8/2006	implementing regulation on the system of rail operation safety and rail transport safety, and on procedures in the event of the rise of incidents	transposition of the Directive 2004/49/EC
Legislation concerning notified bodies, assessors, third parties bodies for registration, examination, etc.	NONE			
National rules concerning railway safety				
Rules concerning national safety targets and methods	Decree No. 376/2006 Coll.	1/8/2006	implementing regulation on the system of rail operation safety and rail transport safety, and on procedures in the event of the rise of incidents	transposition of the Directive 2004/49/EC
Rules concerning requirements for safety management systems and safety certification of railway undertakings	Decree No. 376/2006 Coll.	1/8/2006	implementing regulation on the system of rail operation safety and rail transport safety, and on procedures in the event of the rise of incidents	transposition of the Directive 2004/49/EC
Rules concerning requirements for safety management systems and safety authorisation of infrastructure managers	Decree No. 376/2006 Coll.	1/8/2006	implementing regulation on the system of rail operation safety and rail transport safety, and on procedures in the event of the rise of incidents	transposition of the Directive 2004/49/EC
Rules concerning requirements for wagonkeepers	NONE			
Rules concerning requirements for maintenance workshops	NONE			

Rules concerning requirements for the authorisation of placing in service and maintenance of new and substantially altered rolling stock, including rules for exchange of rolling stock between railway undertakings, registration systems and requirements on testing procedures	Decree No. 209/2006 Coll.	1/7/2006	on emissions of combustion engines	transposition of the Directive 2004/50/EC
	Decree No. 210/2006 Coll.	1/7/2006	on conditions for operation specified technological equipment and specification thereof	
	Decree No. 377/2006 Coll.	1/8/2006	on interoperability of European railway system	
Common operating rules of the railway network, including rules relating to the signalling and traffic procedures	NONE			
Rules laying down requirements on additional internal operating rules (company rules) that must be established by the Infrastructure Managers and Railway Undertakings	Decree No. 376/2006 Coll.	1/8/2006	implementing regulation on the system of rail operation safety and rail transport safety, and on procedures in the event of the rise of incidents in rail systems	transposition of the Directive 2004/49/EC
Rules concerning requirements on staff executing safety critical tasks, including selection criteria, medical fitness and vocational training and certification	NONE			
Rules concerning the investigation of the accident and incidents including recommendation	Decree No. 376/2006 Coll.	1/8/2006	implementing regulation on the system of rail operation safety and rail transport safety, and on procedures in the event of the rise of incidents in rail systems	transposition of the Directive 2004/49/EC
Rules concerning requirements for national safety indicators including how to collect and analyse the indicators	NONE			
Rules concerning requirements for authorisation of placing in service the infrastructure (tracks, bridges, tunnels, energy, ATC, radio, signalling, interlocking, level crossing, platforms, etc.)	Decree No. 377/2006 Coll.	1/8/2006	on operational and technical interoperability of European railway system	transposition of the Directive 2004/50/EC

ANNEX E: The development of safety certification and authorisation – Numerical Data

E.1. Safety Certificates according to Directive 2001/14/EC

Number of Safety Certificates issued according to Directive 2001/14/EC, held by Railway Undertakings in year 2006 being licensed	in Czech Republic	68
	in another Member State	0

E.2. Safety Certificates according to Directive 2004/49/EC

		New	Updated/amended	Renewed
E.2.1 Number of valid Safety Certificates Part A held by Railway Undertakings in the year 2006 being registered	in Czech Republic	0	0	0
	in another Member State	0	0	0

		New	Updated/amended	Renewed
E.2.1 Number of valid Safety Certificates Part B held by Railway Undertakings in the year 2006 being registered	in Czech Republic	0	0	0
	in another Member State	0	0	0

			A	R	P
E.2.3 Number of applications for Safety Certificates Part A submitted by Railway Undertakings in year 2006 being registered	in Czech Republic	new certificates	0	0	0
		updated/amended certificates	0	0	0
		renewed certificates	0	0	0
	in another Member State	new certificates	0	0	0
		updated/amended certificates	0	0	0
		renewed certificates	0	0	0

			A	R	P
E.2.4 Number of applications for Safety Certificates Part B submitted by Railway Undertakings in year 2006 being registered	in Czech Republic	new certificates	0	0	0
		updated/amended certificates	0	0	0
		renewed certificates	0	0	0
	in another Member State	new certificates	0	0	0
		updated/amended certificates	0	0	0
		renewed certificates	0	0	0

A = Accepted application, certificate is already issued

R = Rejected applications, no certificate was issued

P = Case is still pending, no certificate was issued so far

E.3. Safety Authorisations according to Directive 2004/49/EC

	New	Update/amended	Renewed
E.3.1 Number of valid Safety Authorisations held by Infrastructure Managers in the year 2006 being registered in Czech Republic	0	0	0

		A	R	P
E.3.2 Number of applications for Safety Authorisations submitted by Infrastructure Managers in year 2006 being registered in Czech Republic	New authorisations	0	0	0
	Update/amended authorisations	0	0	0
	Renewed authorisations	0	0	0

A = Accepted application, authorisation is already issued

R = Rejected applications, no authorisation was issued

P = Case is still pending, no authorisation was issued so far

E.4. Procedural aspects – Safety Certificates part A

		New	Update / amended	Renewed
Mean time after having received all necessary information between the receipt of an application and the final delivery of a Safety Certificate Part A in year 2006 for Railway Undertakings holding	a licence released by Czech Republic	60	30	30
	a licence released by another Member State	60	30	30

E.5. Procedural aspects – Safety Certificates part B

		New	Update / amended	Renewed
Mean time after having received all necessary information between the receipt of an application and the final delivery of a Safety Certificate Part B in year 2006 for Railway Undertakings holding	a licence released by Czech Republic	60	30	30
	a licence released by another Member State	60	30	30

E.6. Procedural aspects – Safety Authorisations

		New	Update / amended	Renewed
Mean time after having received all necessary information between the receipt of an application and the final delivery of a Safety Authorisation in year 2006 for Infrastructure Managers holding	a licence released by Czech Republic	60	30	30
	a licence released by another Member State	60	30	30