

From Data Exchange to Digital Tracks

IT

10 DECEMBER 2025



General

Member States

Nearly all European IMs and ABs
are RNE Members

Exceptions:

IMs/ABs from Ireland, Northern Ireland,
and parts of the Balkans



Members

Full Members



Associate Members

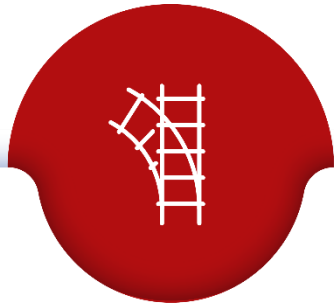


General

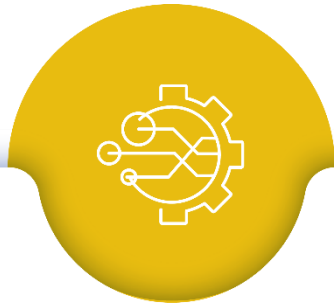
Project Portfolio



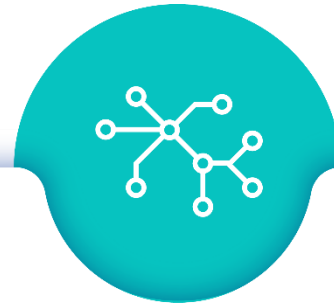
**Capacity
Management**



**Traffic
Management**



IT



**Corridor
Management**



**Legal Matters &
Sales**

IT Landscape - Europe currently...



From a planning perspective:

- Isolated with a national focus, lack of strategic planning
- Cooperation 'islands'
- Tedious planning meetings with limited scalability

From an allocation perspective:

- Varying levels of maturity and digitalization
- Request country by country for a single train run
- Tedious coordination for changes

Traffic Management:

- Common European System (tis.rne.eu)
- National systems and rules

Europe with Digital Capacity Management



Planning

- Various tools support strategic decisions
- Harmonized international traffic flows
- Universal European processes

Allocation

- Modern, digital solutions for capacity booking
- Single-place solution for international requests
- Up-to-date and traceable change management

Traffic Management:

- Common European System (tis.rne.eu)
- Including all information related to train operation in one system
- Reducing national rules and procedures

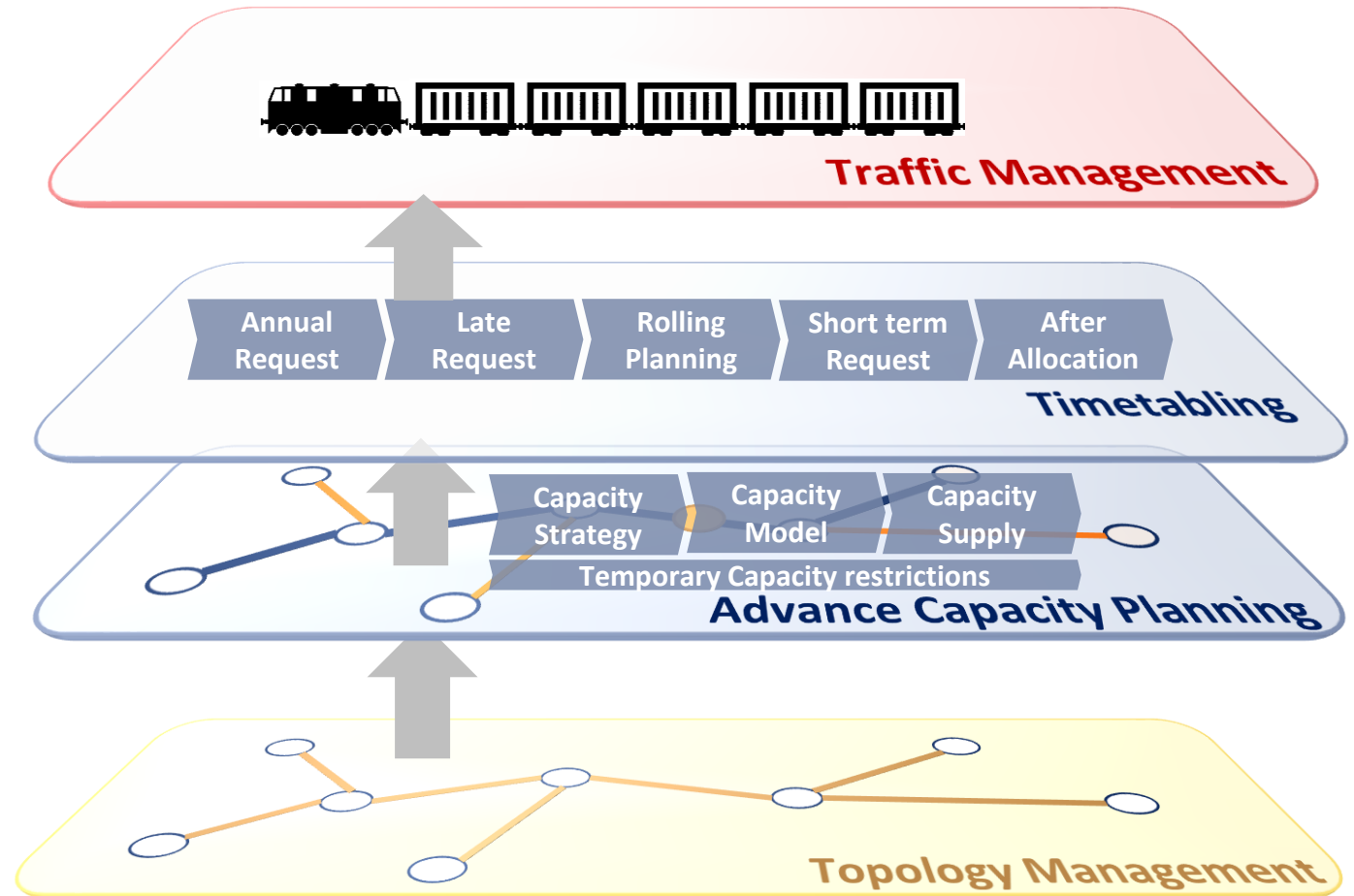
Main Regulations/TSI to be implemented by the Sector/NC

**Telematics
TSI**

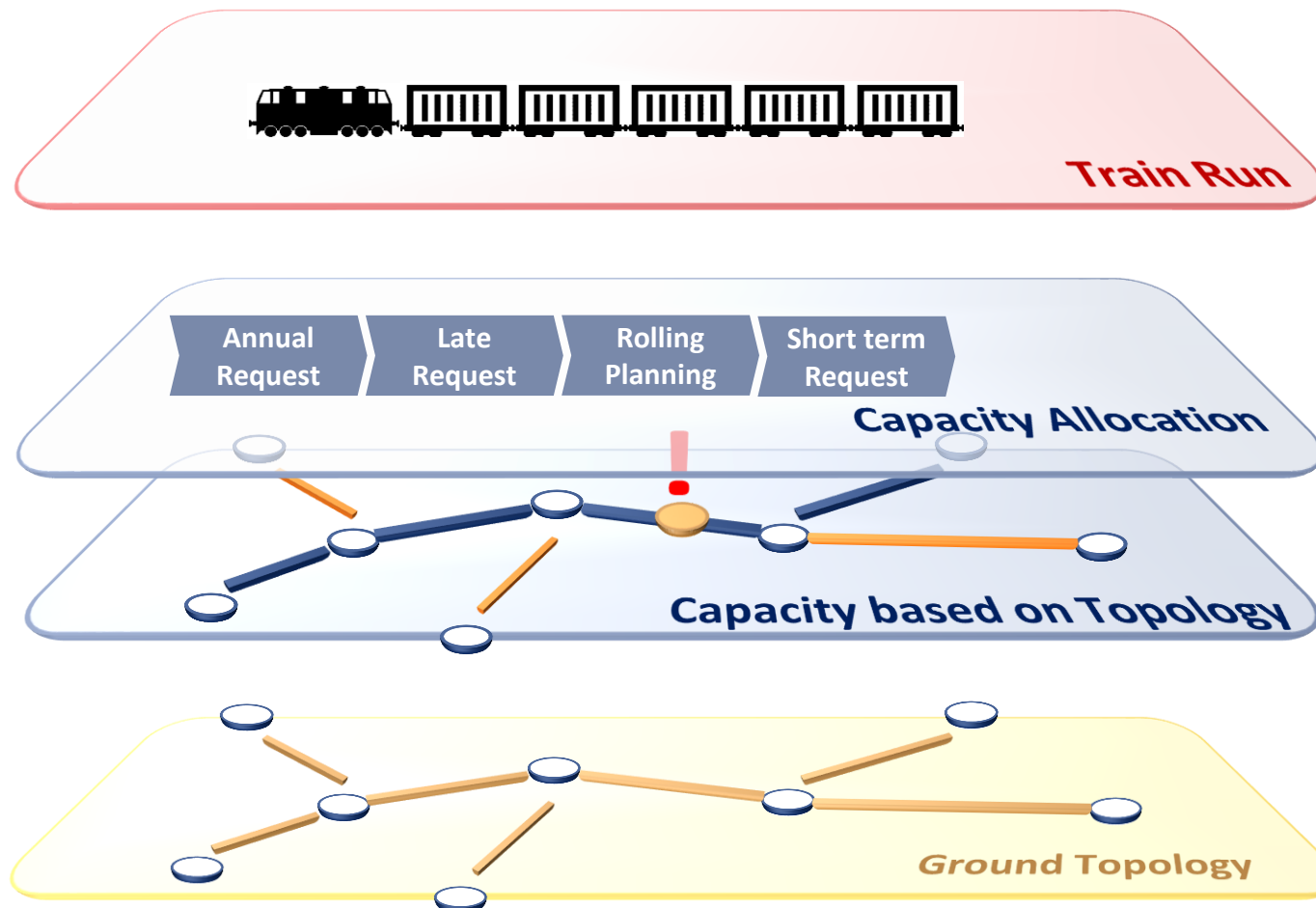


**Capacity
Regulation**

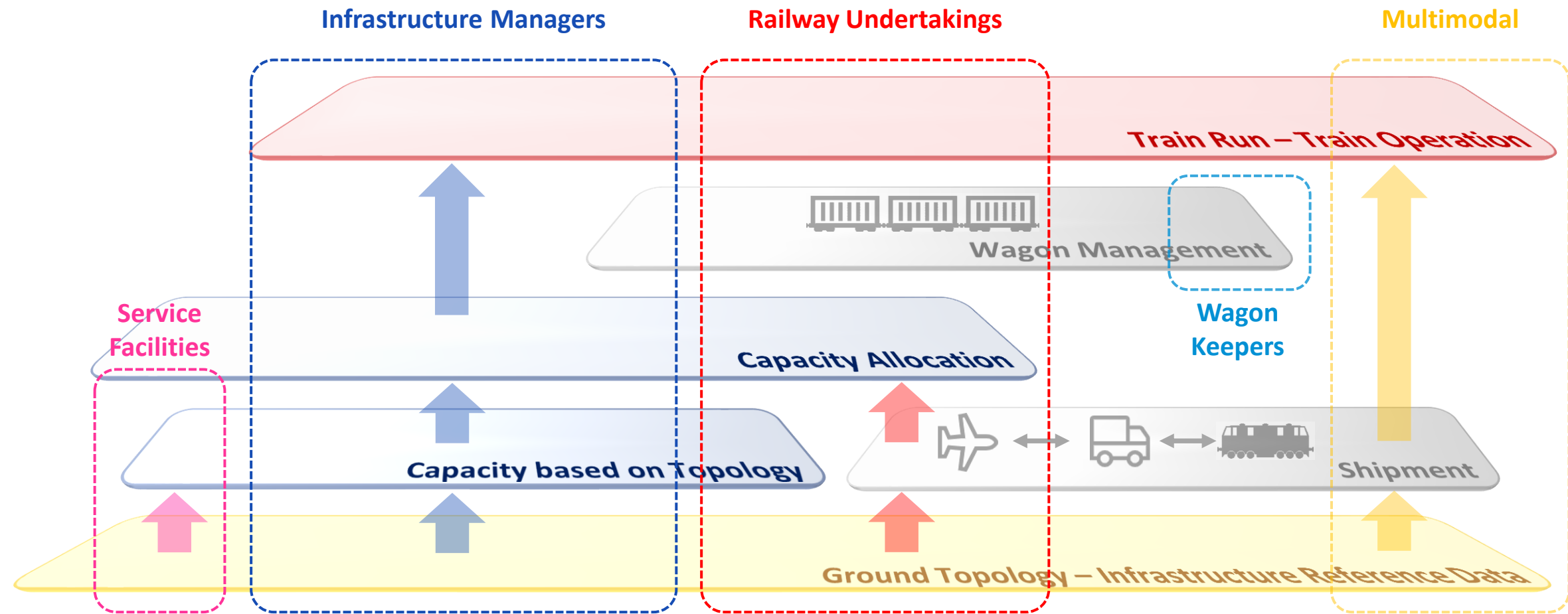
Digital Implementation Strategy by RNE/IMs – CR & TSI



RNE IT Strategy



Data exchange in the sector



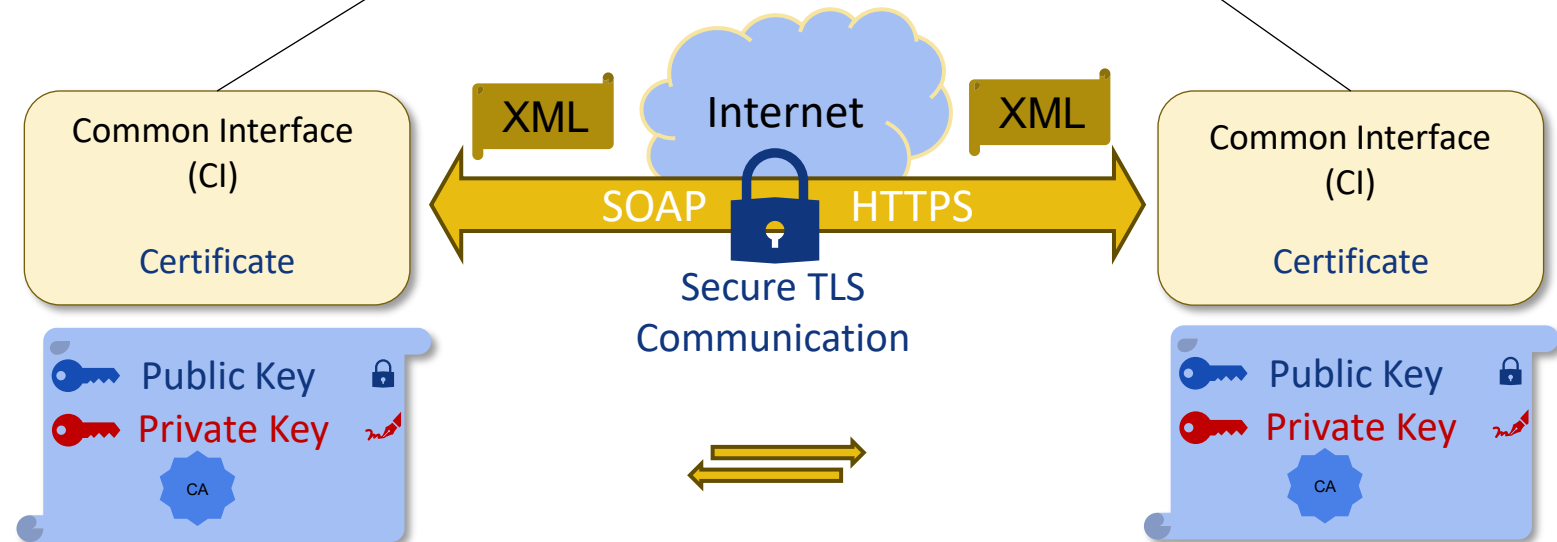
CI – TLS Communication Between CIs

Secure Communication Channels for Railway Common Interfaces

Key Security Features:

- Establishes secure SSL/TLS communication channels between Common Interface implementations
- Certificate-based authentication ensures only legitimate CIs can connect to the network
- Mutual TLS authentication verifies identity of both communicating parties
- All certificates are issued and managed by RNE to ensure trust across the rail network

- Certificate Exchange
- Mutual Authentication
- Secure Communication
- Protects across intermediaries

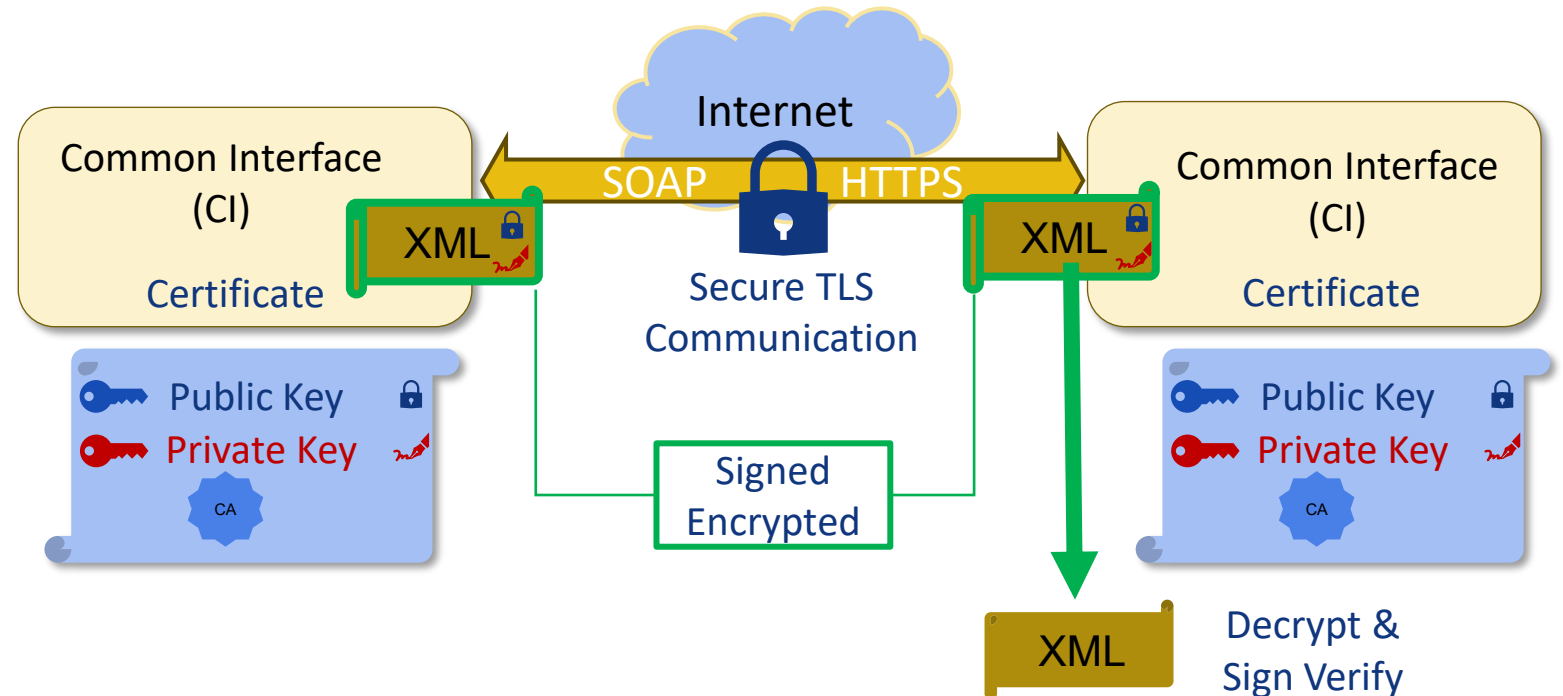


CI Security: Encryption & TLS Communication

Ensuring Secure Communication and Data Protection in Common Interface (CI) According to ERA

Key Security Features

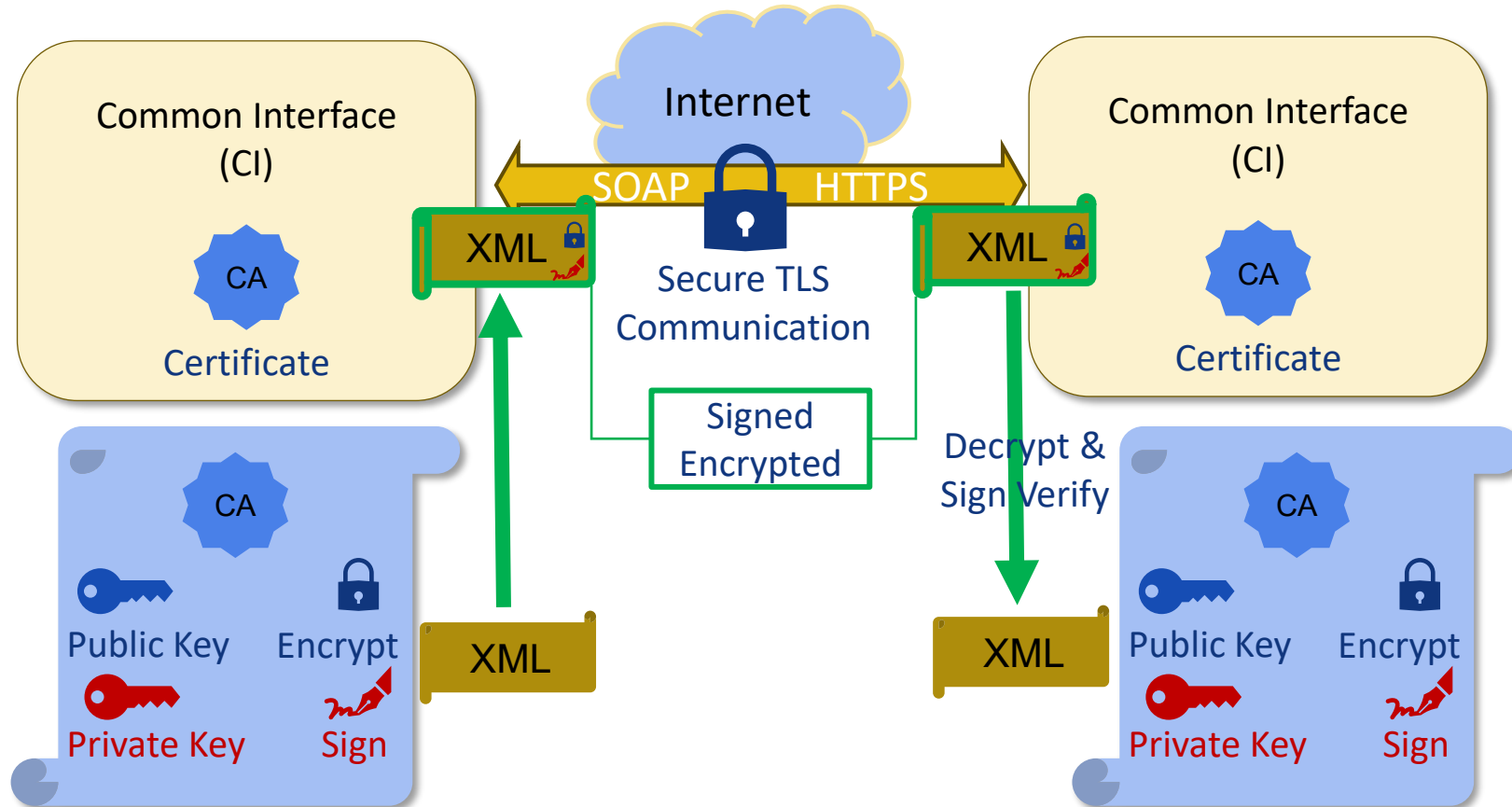
- The CI signs outbound messages according to the provisions of ERA Technical Document 104
- Uses a private key derived from the CI's certificate for message signing
- Encrypts messages for confidentiality, ensuring only intended recipients can access
- Standardized process enables interoperability between different railway CI implementations
- RNE acts as Certificate Authority for CI



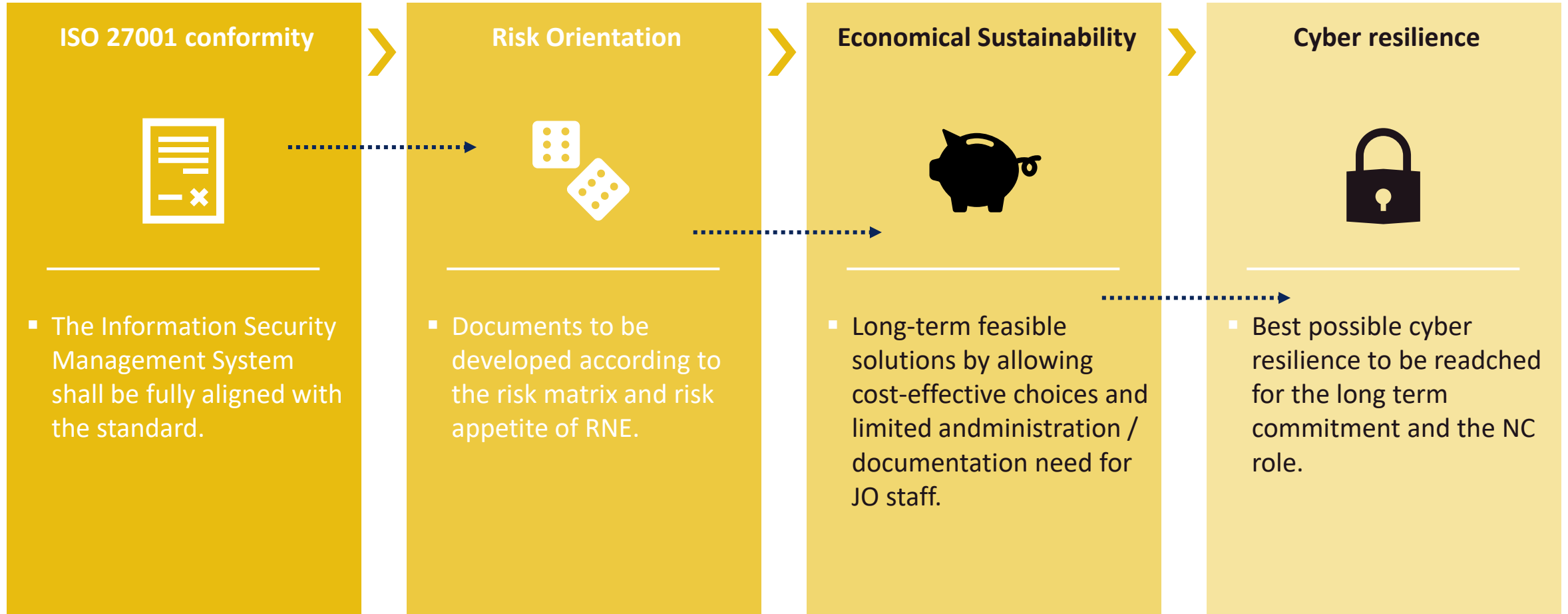
CI Application-Level Encryption & Decryption

Security Benefits

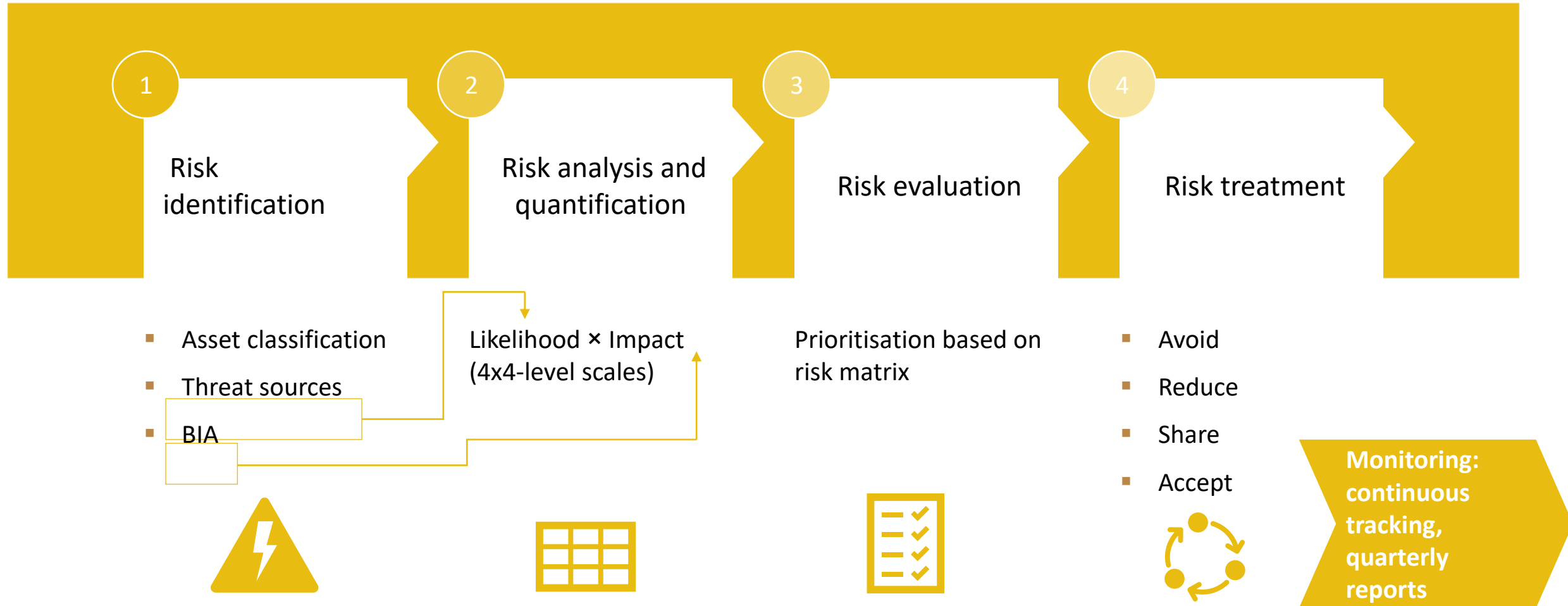
- Integrity: Prevents message tampering
- Authenticity: Verifies message source
- Confidentiality: Protects sensitive data
- Non-repudiation: Sender cannot deny sending



Main pillars of the Information Security System @ RNE



Risk treatment process



ISO 27001 – Project – Risk Assessment

L	Likelihood
0	n/a; impossible
1	every 5 years / extremely rare
2	once a year / rare or unlikely
3	monthly / sometimes or likely
4	daily / frequently or very likely

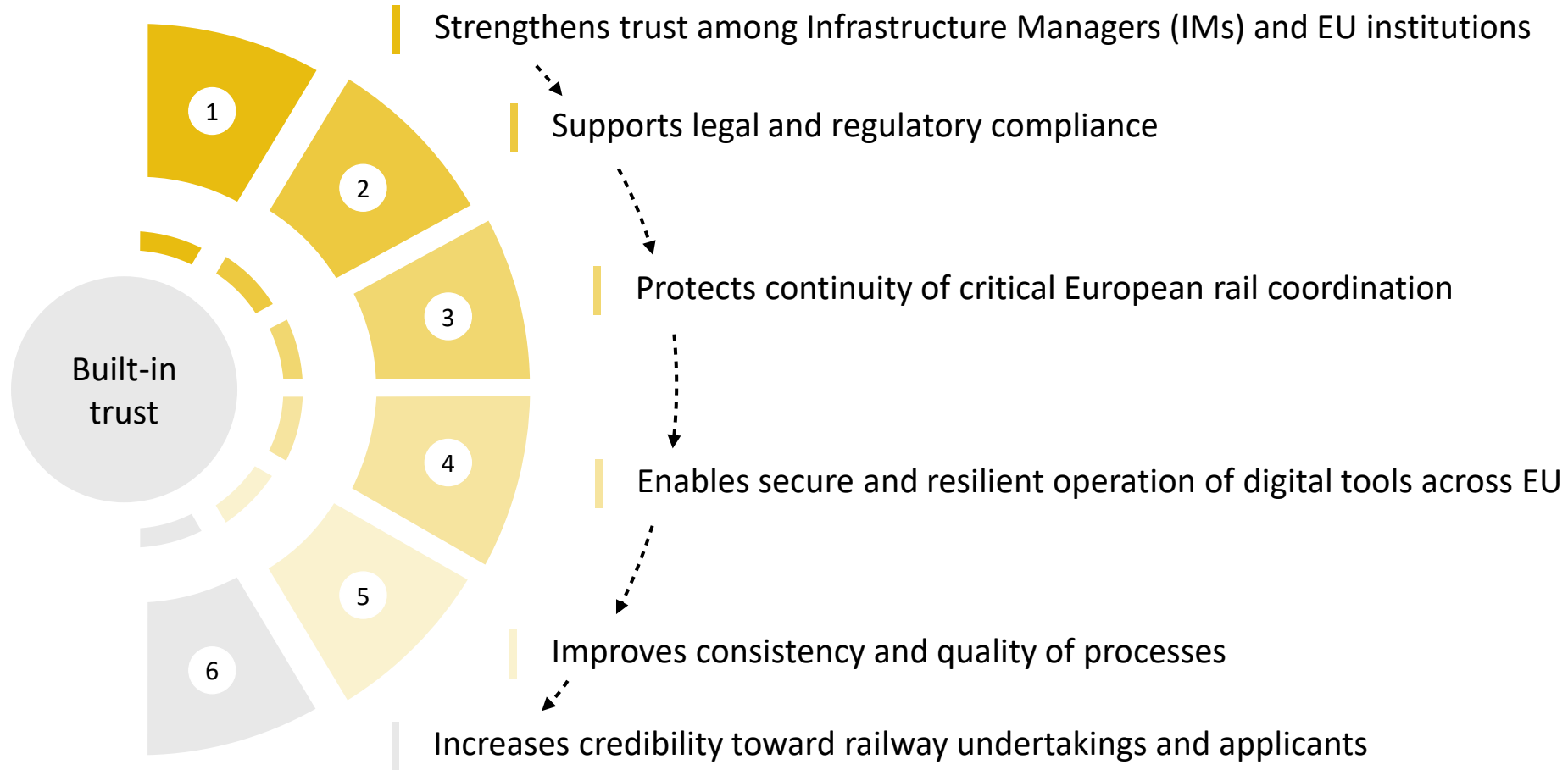
I	Impact
0	EUR < 10 k
1	EUR 10 k - EUR 250 k
2	EUR 250 k - EUR 1 million
3	EUR 1 million – 4 million
4	EUR > 4 million

$R = L \times I$

I					
4	4	8	12	16	
3	3	6	9	12	
2	2	4	6	8	
1	1	2	3	4	
	1	2	3	4	L

Enter type name	Enter the name of the organization / unit (e.g., Customer Service)	Enter the name of the RNE Applications / Subject Area / Business Process (e.g., Customer Support) - Only one process per row, max. 255 characters	Maximum impact (evaluated in BIA) in the case of a breach of protection requirements C = Confidentiality I = Integrity A = Availability			ACTUAL RISK SCORE BEFORE TREATMENT		
RNE Application		DII (actually incl. CI)	0	1	3	0	3	9
RNE Application		DCM (incl. CM)	1	1	3	3	3	9
RNE Application		DTI (incl. TM)	1	1	3	3	3	9
Subject Area		General IT	2	1	3	6	3	9
Subject Area		Administration	0	0	2	0	0	0
Subject Area		Human Resources	1	1	3	3	3	9
Subject Area		Legal	0	0	3	0	0	0
Subject Area		Sales	0	0	2	0	0	0
Subject Area		Financing (incl. Funding)	2	2	3	6	6	9
Subject Area		Communications, Event Management	0	0	2	0	0	0

Why Information Security Matters for RNE?



We will keep you informed...



Harald Reisinger

Chief Information Officer / Chief
Financial Officer

+43 664 884 24 801

Harald.Reisinger@rne.eu

RailNetEurope
Austria Campus 3
Jakov-Lind-Straße 5
1020 Vienna, Austria
www.rne.eu