

# EIB at a glance

**One of the world's largest multilateral lender and borrower in the world**

**€89 billion financing in 2024**

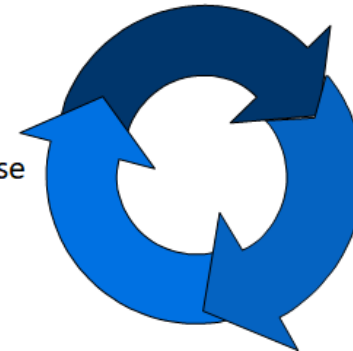
**Headquartered in Luxembourg & >50 offices around the world**

## Lending

Wide range of financial products  
(loans, intermediary loans,  
guarantees, equity, infra funds, etc.)

## Advising

Technical & financial expertise  
available to our clients



## Blending

Combining EIB finance with EU  
budget and financial  
instruments (CEF)

## EU climate objectives & funding requirements

Climate risk and vulnerability assessment as cornerstone for climate resilience in EU & EIB co-financing



[Technical guidance on the climate proofing of infrastructure 2021-2027](#)

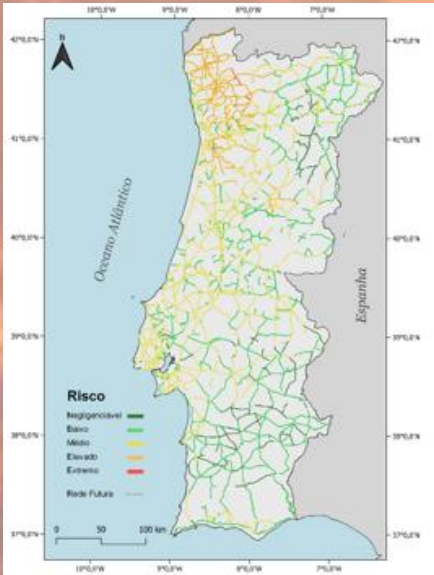
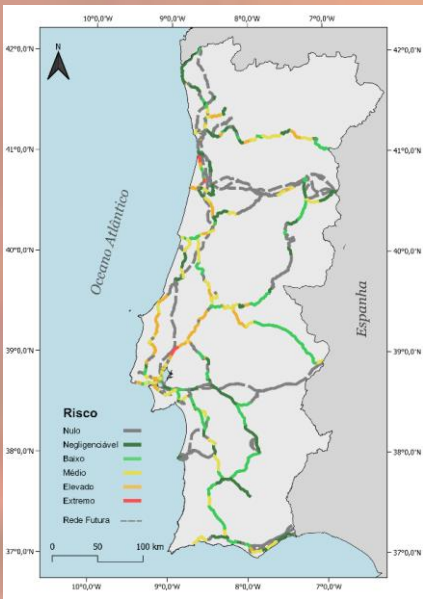
## Climate hazards impacting transport networks



# Context for transport network managers/operators & EIB support

- 
- EIB Advisory support on climate change adaptation and climate resilience plans:
- Polish National Roads
  - Infraestruturas de Portugal
  - ADIF Spain
  - Spanish National Roads
  - Italian National Networks

# Example of EIB Advisory support for the Climate Change Resilience Plan of Infraestruturas de Portugal



## Stage I: Climate Change Risks Analysis of IP networks (completed)

- Road, rail & telematics
- Based on **climate incidents**
- Considering **climate scenarios**
- Build on **IP GIS tool**



## Stage II: Climate Adaptation Action Plan (on-going)

- Identification of **climate adaptation investments** on existing networks
- Informing **CCVRA for new investments**
- **Capacity building & knowledge sharing**

**EIB Advisory support**  
close & hands-on technical advice



# Climate resilience of transport networks: some lessons learned

**EU and EIB advisory and financing resources available for climate adaptation**

**Major opportunity for existing infrastructure**

