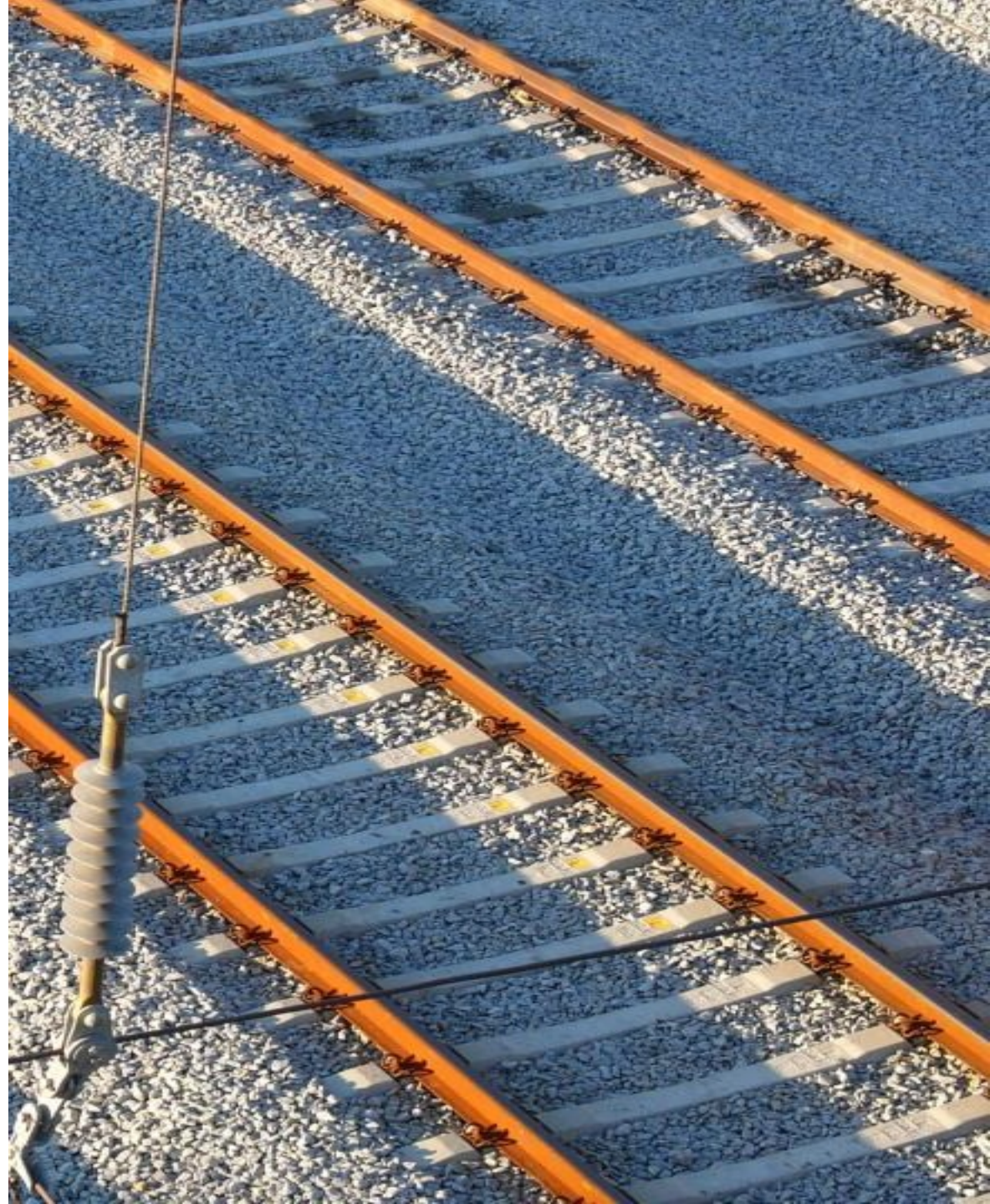


RINF na IP

II JORNADAS DE CERTIFICAÇÃO FERROVIÁRIA

Patrícia Catarrinho
Negócio Ferroviário
27 de março de 2025



RINF

The **RINF Network** is organized based on the graph concept (nodes and arcs), where:

- **Nodes** are Operational Points (dependências) – **Operation Point**. There is a hierarchy of OPs between primary and secondary.
- **Arcs** are sections of line and full track between Nodes – **Section of Line**. Between secondary dependencies, they are Section Of Track.

4 levels of layers

Macro – Nodes and sections

Meso – Section of tracks, platforms, station tracks, and itineraries within nodes

Micro – Elements of the signalling diagram: track circuit switches, signals, counters, etc.

Nano – Constructive elements of the infrastructure: rail, sleepers, , signals, etc.

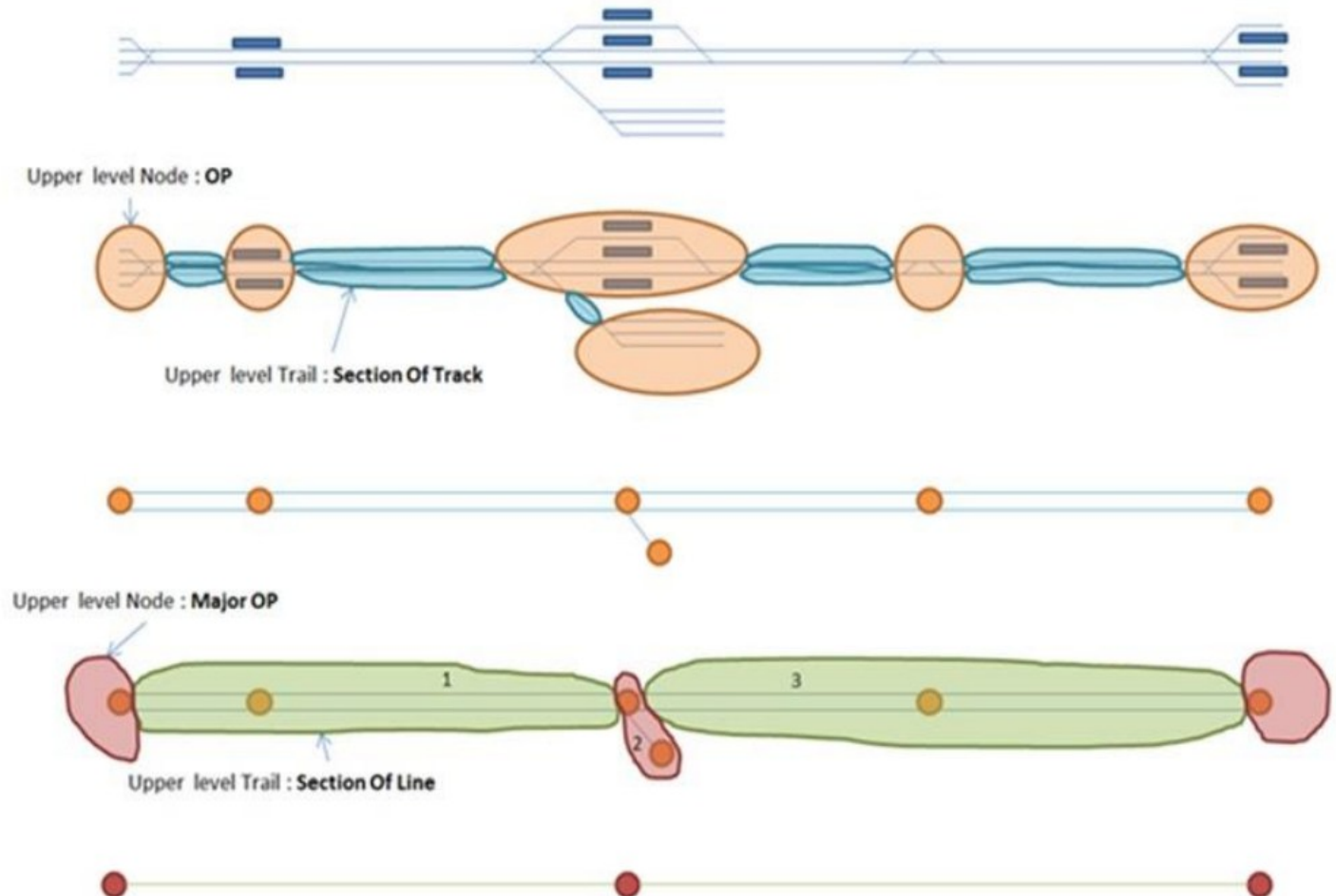
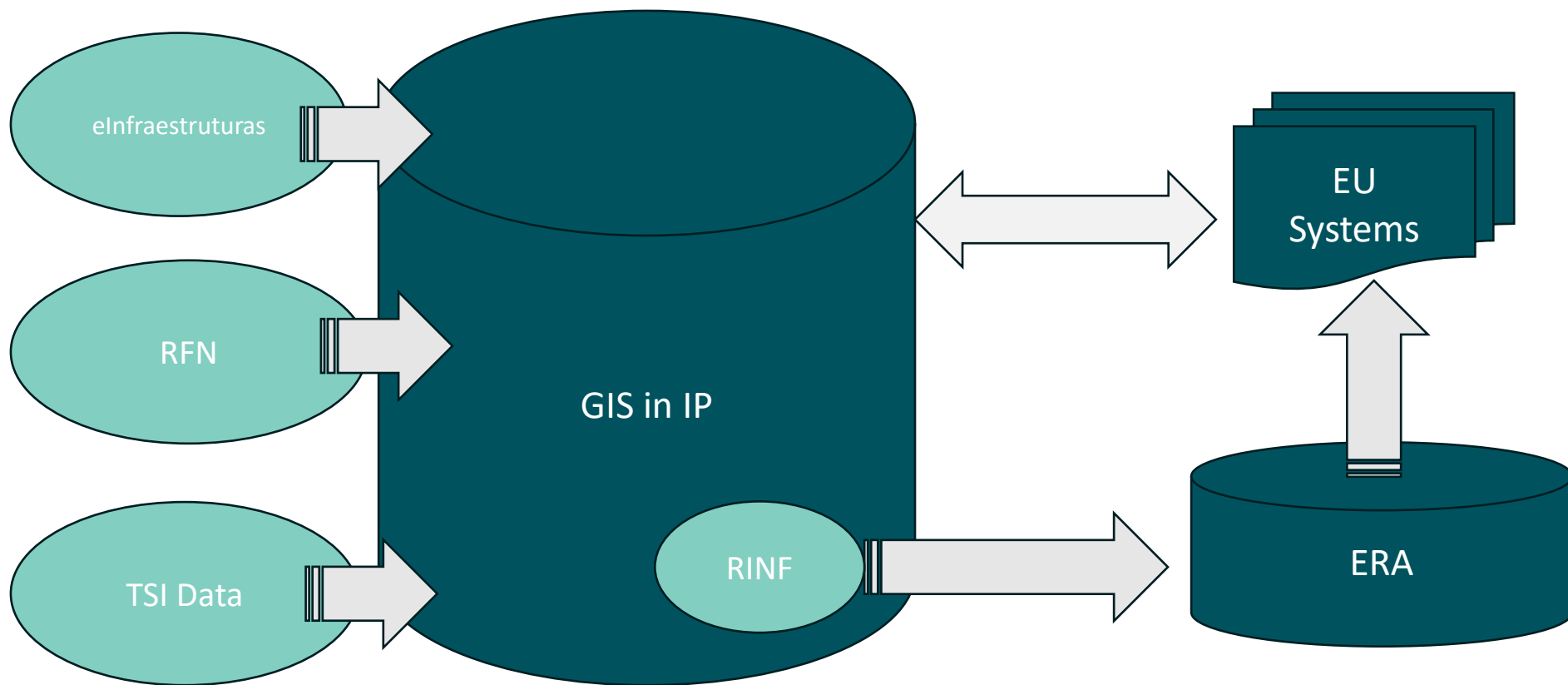


Fig. 1 – Levels of description of the network (adapted from UIC RailTopoModel Railway Network Description)

RINF Update in 2024



Infraestruturas de Portugal Master Register and RINF

01

IP is working on an integrated digital Register system to ensure high-quality RINF data

02

The system connects RINF with other thematic domains to assure data consistency

03

A new IT tool will be implemented to manage this Master Register efficiently

06

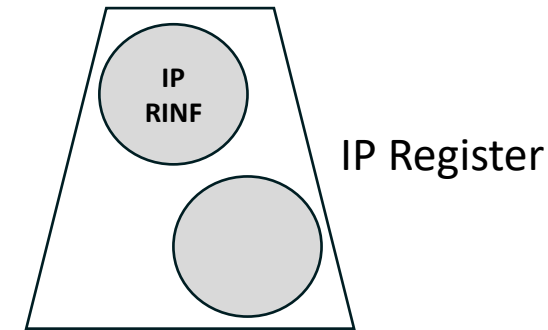
IP Master Register is planned to fully run from 2029, covering all aspects

05

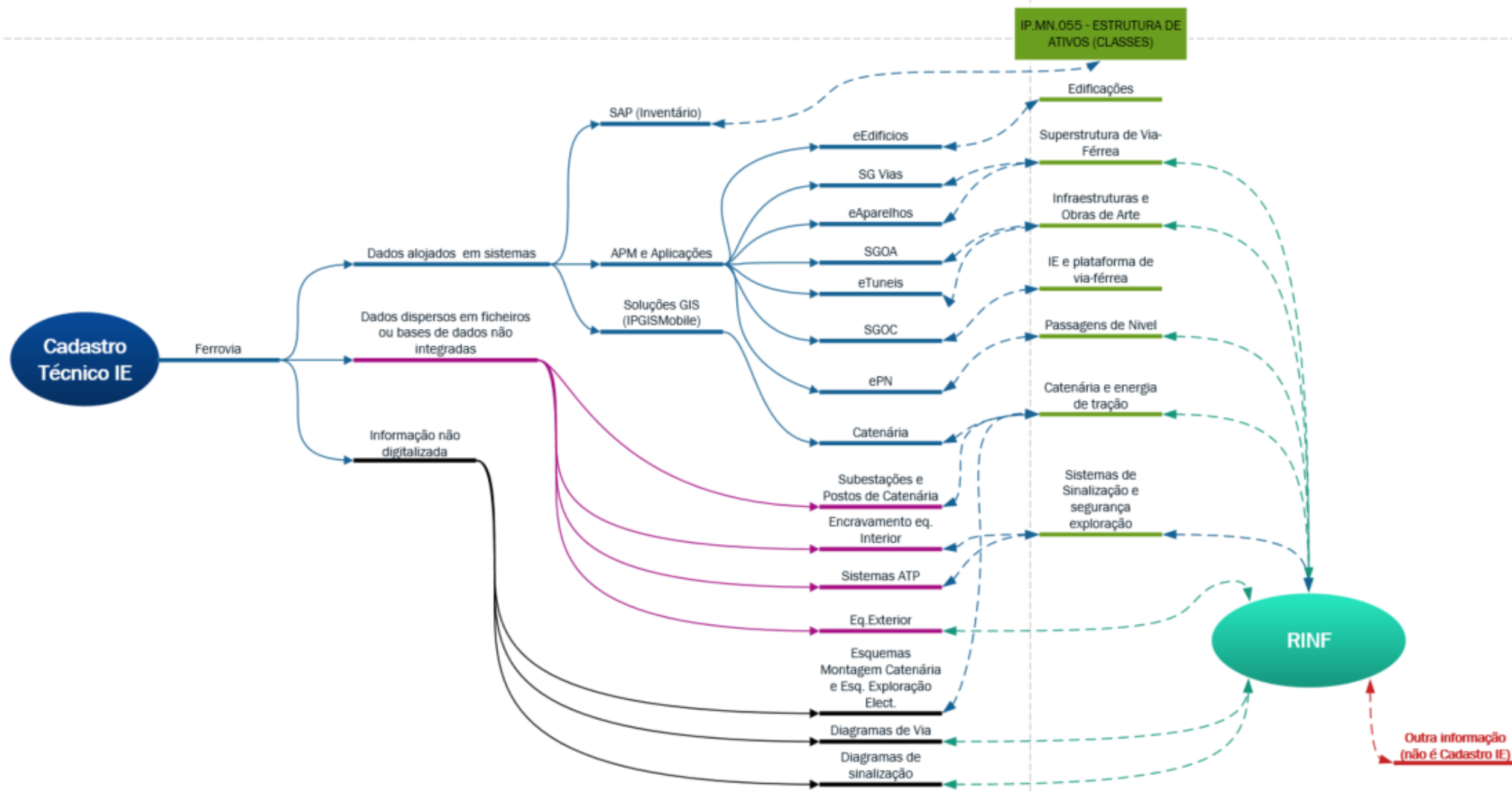
The RINF part is expected to be completed by 2028

04

The project includes reorganizing processes and resources to support the system



Master Register Assessment



Infraestruturas de Portugal has applied for EC Funding to fulfil RINF implementation

If approved, this will greatly facilitate the new RINF implementation



Digital Capacity Management Implementation 2025-2029
Call: CEF-T-2024-SIMOBGEN
(CEF 2 Transport - Actions related to smart and interoperable mobility – General envelope)
Topic: CEF-T-2024-SIMOBGEN-REMIB-WORKS
Type of Action: CEF-INFRA
Proposal number: 101232833
Proposal acronym: DCM IMP 25-29



National RINF Implementation Plan

Objective: Develop a plan to implement the Rail Infrastructure Register (RINF).

Actions: Analyse current state, identify gaps, and develop a digital register.

Impact: Improve asset management and data quality.

Calendar: 2025 to 2026

RINF Management System Implementation

Objective: Implement the RINF management system

Actions: Collect requirements, develop data processes, and create governance.

Impact: Ensure data accuracy and accessibility.

Calendar: 2026 to 2027

O B R I G A D A



Infraestruturas de Portugal, SA

Campus do Pragal, Praça da Portagem 2809-013
Almada Portugal

E-MAIL: ip@infraestruturasdeportugal.pt

SITE: www.infraestruturasdeportugal.pt